

# **BONANZA CREEK ENERGY INC.**

**WELD COUNTY, COLORADO (NAD 83)**

**SE SE SEC. 34 T4N R63W 6th P.M.**

**MUSTANG X44-D14-34HNB**

**ORIGINAL WELLBORE**

**03 December, 2016**

**Plan: PROPOSAL #2**

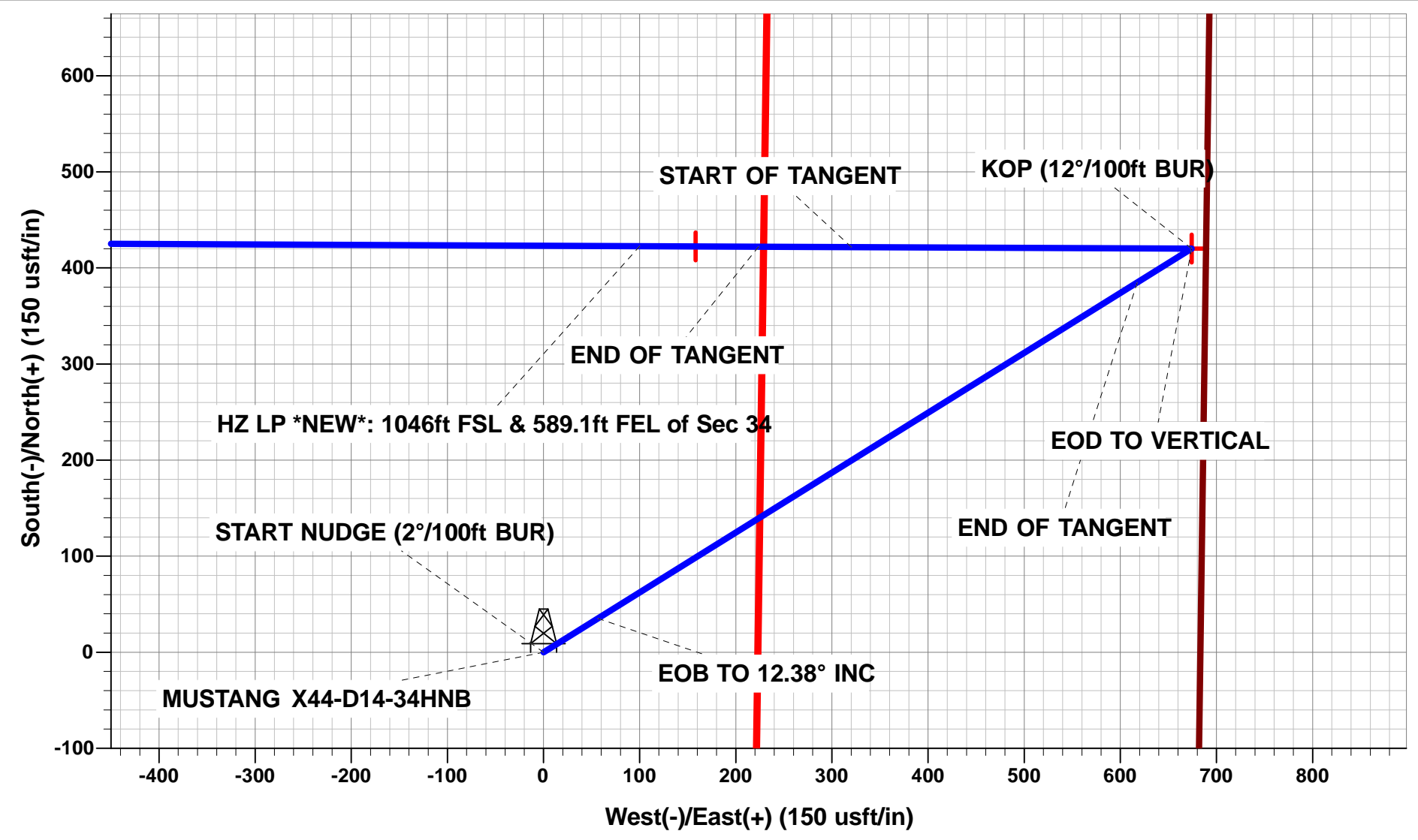




Project: WELD COUNTY, COLORADO (NAD 83)  
Site: SE SE SEC. 34 T4N R63W 6th P.M.  
Well: MUSTANG X44-D14-34HNB  
Wellbore: ORIGINAL WELLBORE  
Design: PROPOSAL #2

ANNOTATIONS								
TVD	MD	Inc	Azi	+N/-S	+E/-W	Vsect	Dep	Annotation
0.0	0.0	0.00	0.00	0.0	0.0	0.0	0.0	SHL: 624ft FSL & 683ft FEL of Sec 34
1700.0	1700.0	0.00	0.00	0.0	0.0	0.0	0.0	START NUDGE (2°/100ft BUR)
2314.3	2319.1	12.38	58.07	35.2	56.6	-52.4	66.6	EOB TO 12.38° INC
5325.9	5402.4	12.38	58.07	384.9	617.7	-572.7	727.8	END OF TANGENT
5940.1	6021.4	0.00	58.07	420.1	674.2	-625.1	794.4	EOD TO VERTICAL
5970.1	6051.4	0.00	0.00	420.1	674.2	-625.1	794.4	KOP (12°/100ft BUR)
6431.3	6676.4	75.00	270.25	421.6	320.3	-273.1	1148.2	START OF TANGENT
6457.2	6776.4	75.00	270.25	422.1	223.7	-177.1	1244.8	END OF TANGENT
6473.4	6901.4	90.00	270.25	422.6	100.2	-54.1	1368.4	HZ LP *NEW*: 1046ft FSL & 589.1ft FEL of Sec 34
6473.4	11076.2	90.00	270.25	440.8	-4074.5	4098.3	5543.2	BHL: 1053ft FSL & 470ft FWL of Sec 34

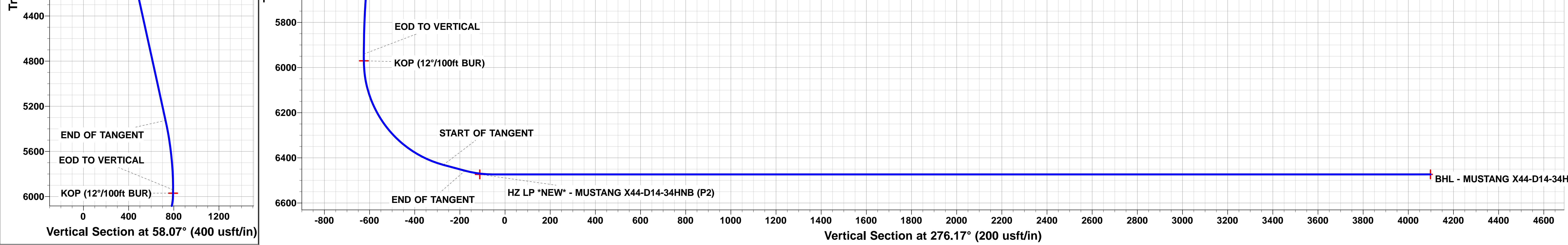
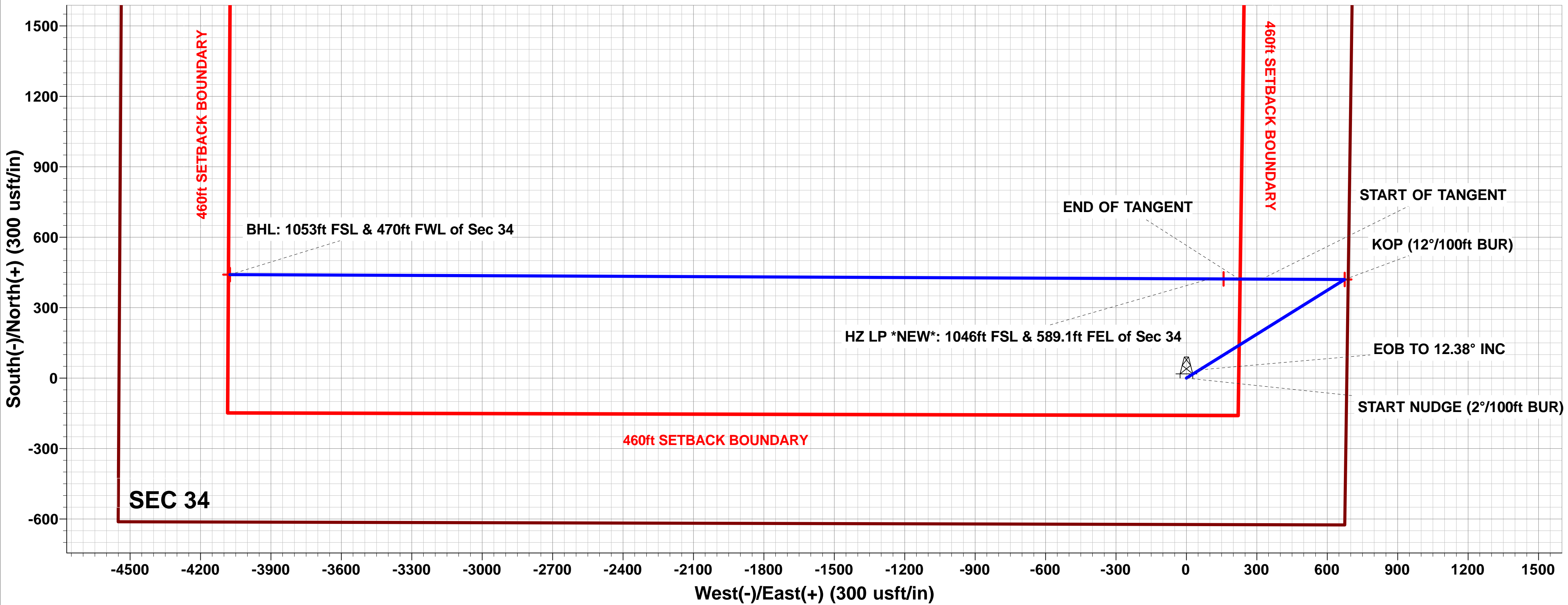
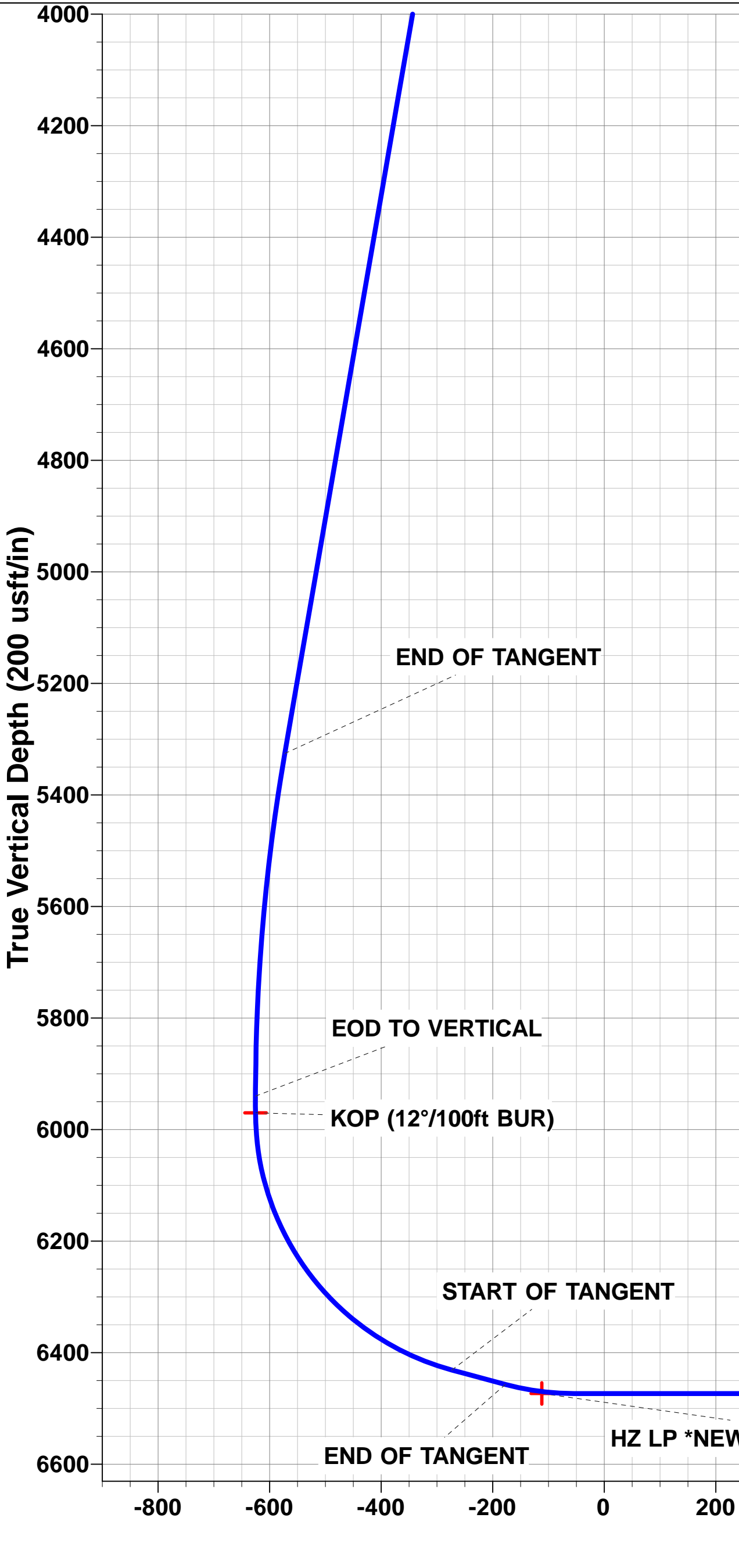
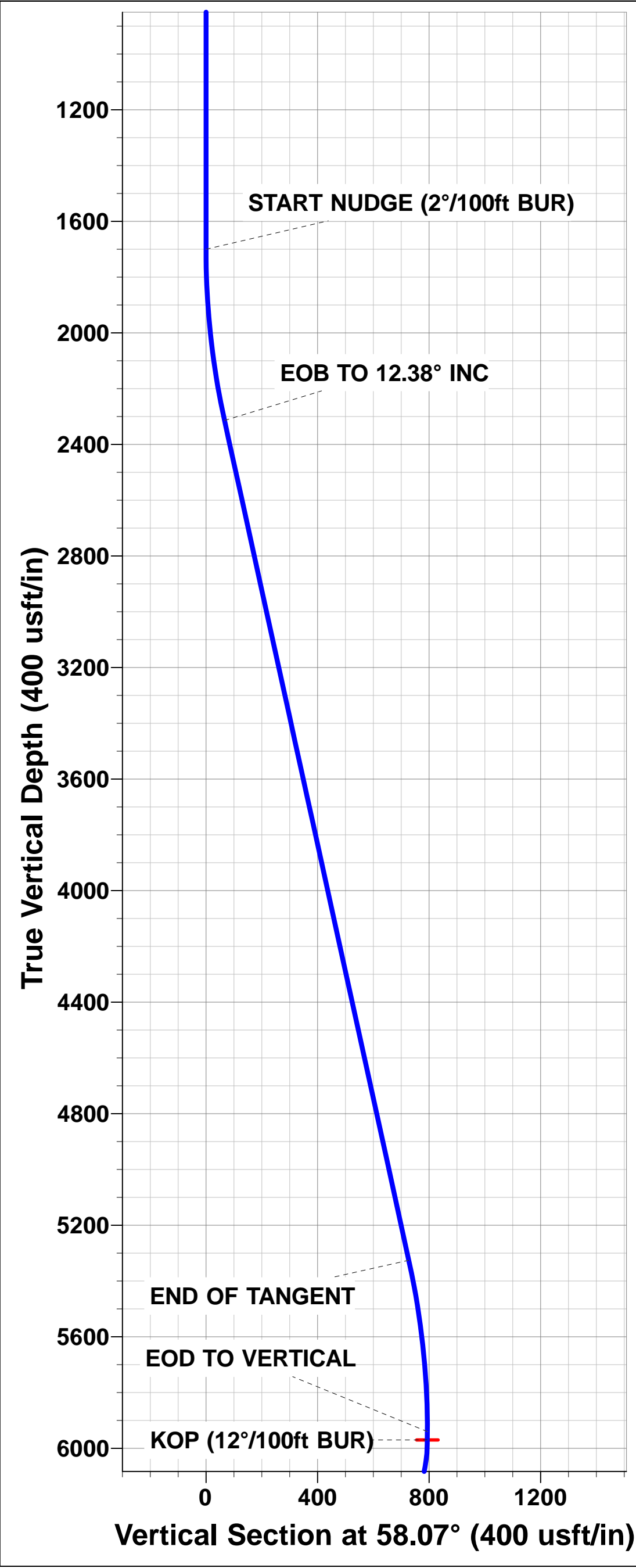
WELLBORE TARGET DETAILS (LAT/LONG)					
Name	TVD	+N/-S	+E/-W	Latitude	Longitude
KOP - MUSTANG X44-D14-34HNB (P2)	5970.1	420.1	674.2	40.264686	-104.414715
BHL - MUSTANG X44-D14-34HNB (P2)	6473.4	440.8	-4074.5	40.264742	-104.431731
HZ LP *NEW* - MUSTANG X44-D14-34HNB (P2)	6473.4	422.4	158.2	40.264692	-104.416564



PROPOSED LOCAL COORDINATES:  
SHL: 624ft FSL & 683ft FEL of Sec 34  
HZ LP \*NEW\*: 1046ft FSL & 589.1ft FEL of Sec 34  
BHL: 1053ft FSL & 470ft FWL of Sec 34

T  
M

Azimuths to True North  
Magnetic North: 8.08°  
  
Magnetic Field  
Strength: 52428.8snT  
Dip Angle: 66.81°  
Date: 02/11/2016  
Model: IGRF2015



<b>Database:</b>	EDM 5000.1 Single User Db	<b>Local Co-ordinate Reference:</b>	Well MUSTANG X44-D14-34HNB
<b>Company:</b>	BONANZA CREEK ENERGY INC.	<b>TVD Reference:</b>	KB @ 4813.4usft
<b>Project:</b>	WELD COUNTY, COLORADO (NAD 83)	<b>MD Reference:</b>	KB @ 4813.4usft
<b>Site:</b>	SE SE SEC. 34 T4N R63W 6th P.M.	<b>North Reference:</b>	True
<b>Well:</b>	MUSTANG X44-D14-34HNB	<b>Survey Calculation Method:</b>	Minimum Curvature
<b>Wellbore:</b>	ORIGINAL WELLBORE		
<b>Design:</b>	PROPOSAL #2		

<b>Project</b>	WELD COUNTY, COLORADO (NAD 83)		
<b>Map System:</b>	US State Plane 1983	<b>System Datum:</b>	Mean Sea Level
<b>Geo Datum:</b>	North American Datum 1983		
<b>Map Zone:</b>	Colorado Northern Zone		Using geodetic scale factor

<b>Site</b>	SE SE SEC. 34 T4N R63W 6th P.M.		
<b>Site Position:</b>		<b>Northing:</b>	1,340,570.67 usft
<b>From:</b>	Lat/Long	<b>Easting:</b>	3,302,121.51 usft
<b>Position Uncertainty:</b>	0.0 usft	<b>Slot Radius:</b>	1.10000ft
		<b>Latitude:</b>	40.263203
		<b>Longitude:</b>	-104.417381
		<b>Grid Convergence:</b>	0.70 °

<b>Well</b>	MUSTANG X44-D14-34HNB		
<b>Well Position</b>	<b>+N-S</b>	120.2 usft	<b>Northing:</b>
	<b>+E-W</b>	69.8 usft	<b>Easting:</b>
<b>Position Uncertainty</b>	0.0 usft		<b>Wellhead Elevation:</b>
			<b>Latitude:</b>
			<b>Longitude:</b>
			<b>Ground Level:</b>

<b>Wellbore</b>	ORIGINAL WELLBORE				
<b>Magnetics</b>	<b>Model Name</b>	<b>Sample Date</b>	<b>Declination (°)</b>	<b>Dip Angle (°)</b>	<b>Field Strength (nT)</b>
	IGRF2015	02/11/2016	8.08	66.81	52,429

<b>Design</b>	PROPOSAL #2			
<b>Audit Notes:</b>				
<b>Version:</b>	<b>Phase:</b>	PROTOTYPE	<b>Tie On Depth:</b>	0.0
<b>Vertical Section:</b>	<b>Depth From (TVD) (usft)</b>	<b>+N-S (usft)</b>	<b>+E-W (usft)</b>	<b>Direction (°)</b>
	6,473.4	0.0	0.0	276.17

<b>Plan Sections</b>											
MD (usft)	Inc (°)	Azi (°)	Vertical Depth	SS (usft)	+N-S (usft)	+E-W (usft)	Dogleg Rate (°/100usft)	Build Rate (°/100usft)	Turn Rate (°/100usft)	TFO (°)	Target
0.0	0.00	0.00	0.0	-4,813.4	0.0	0.0	0.00	0.00	0.00	0.00	
1,700.0	0.00	0.00	1,700.0	-3,113.4	0.0	0.0	0.00	0.00	0.00	0.00	
2,319.1	12.38	58.07	2,314.3	-2,499.1	35.2	56.6	2.00	2.00	0.00	58.07	
5,402.4	12.38	58.07	5,325.8	512.4	384.9	617.6	0.00	0.00	0.00	0.00	
6,021.4	0.00	0.00	5,940.1	1,126.7	420.1	674.2	2.00	-2.00	0.00	180.00	
6,051.4	0.00	0.00	5,970.1	1,156.7	420.1	674.2	0.00	0.00	0.00	0.00	KOP - MUSTANG >
6,676.4	75.00	270.25	6,431.3	1,617.9	421.6	320.3	12.00	12.00	0.00	270.25	
6,776.4	75.00	270.25	6,457.2	1,643.8	422.1	223.7	0.00	0.00	0.00	0.00	
6,901.4	90.00	270.25	6,473.4	1,660.0	422.6	100.1	12.00	12.00	0.00	0.00	
11,076.2	90.00	270.25	6,473.4	1,660.0	440.8	-4,074.5	0.00	0.00	0.00	0.00	BHL - MUSTANG X

<b>Database:</b>	EDM 5000.1 Single User Db	<b>Local Co-ordinate Reference:</b>	Well MUSTANG X44-D14-34HNB
<b>Company:</b>	BONANZA CREEK ENERGY INC.	<b>TVD Reference:</b>	KB @ 4813.4usft
<b>Project:</b>	WELD COUNTY, COLORADO (NAD 83)	<b>MD Reference:</b>	KB @ 4813.4usft
<b>Site:</b>	SE SE SEC. 34 T4N R63W 6th P.M.	<b>North Reference:</b>	True
<b>Well:</b>	MUSTANG X44-D14-34HNB	<b>Survey Calculation Method:</b>	Minimum Curvature
<b>Wellbore:</b>	ORIGINAL WELLBORE		
<b>Design:</b>	PROPOSAL #2		

## Planned Survey

MD (usft)	Inc (°)	Azi (°)	TVD (usft)	SS (usft)	+N/-S (usft)	+E/-W (usft)	Vertical Section (usft)	Dogleg Rate (°/100usft)	Build Rate (°/100usft)	Turn Rate (°/100usft)
<b>SHL: 624ft FSL &amp; 683ft FEL of Sec 34</b>										
0.0	0.00	0.00	0.0	4,813.40	0.0	0.0	0.0	0.00	0.00	0.00
100.0	0.00	0.00	100.0	4,713.40	0.0	0.0	0.0	0.00	0.00	0.00
200.0	0.00	0.00	200.0	4,613.40	0.0	0.0	0.0	0.00	0.00	0.00
300.0	0.00	0.00	300.0	4,513.40	0.0	0.0	0.0	0.00	0.00	0.00
400.0	0.00	0.00	400.0	4,413.40	0.0	0.0	0.0	0.00	0.00	0.00
500.0	0.00	0.00	500.0	4,313.40	0.0	0.0	0.0	0.00	0.00	0.00
600.0	0.00	0.00	600.0	4,213.40	0.0	0.0	0.0	0.00	0.00	0.00
700.0	0.00	0.00	700.0	4,113.40	0.0	0.0	0.0	0.00	0.00	0.00
800.0	0.00	0.00	800.0	4,013.40	0.0	0.0	0.0	0.00	0.00	0.00
900.0	0.00	0.00	900.0	3,913.40	0.0	0.0	0.0	0.00	0.00	0.00
1,000.0	0.00	0.00	1,000.0	3,813.40	0.0	0.0	0.0	0.00	0.00	0.00
1,100.0	0.00	0.00	1,100.0	3,713.40	0.0	0.0	0.0	0.00	0.00	0.00
1,200.0	0.00	0.00	1,200.0	3,613.40	0.0	0.0	0.0	0.00	0.00	0.00
1,300.0	0.00	0.00	1,300.0	3,513.40	0.0	0.0	0.0	0.00	0.00	0.00
1,400.0	0.00	0.00	1,400.0	3,413.40	0.0	0.0	0.0	0.00	0.00	0.00
1,500.0	0.00	0.00	1,500.0	3,313.40	0.0	0.0	0.0	0.00	0.00	0.00
1,600.0	0.00	0.00	1,600.0	3,213.40	0.0	0.0	0.0	0.00	0.00	0.00
<b>START NUDGE (2°/100ft BUR)</b>										
1,700.0	0.00	0.00	1,700.0	3,113.40	0.0	0.0	0.0	0.00	0.00	0.00
1,800.0	2.00	58.07	1,800.0	3,013.42	0.9	1.5	-1.4	2.00	2.00	0.00
1,900.0	4.00	58.07	1,899.8	2,913.56	3.7	5.9	-5.5	2.00	2.00	0.00
2,000.0	6.00	58.07	1,999.5	2,813.95	8.3	13.3	-12.3	2.00	2.00	0.00
2,100.0	8.00	58.07	2,098.7	2,714.70	14.7	23.7	-21.9	2.00	2.00	0.00
2,200.0	10.00	58.07	2,197.5	2,615.93	23.0	36.9	-34.2	2.00	2.00	0.00
2,300.0	12.00	58.07	2,295.6	2,517.78	33.1	53.1	-49.3	2.00	2.00	0.00
<b>EOB TO 12.38° INC</b>										
2,319.1	12.38	58.07	2,314.3	2,499.11	35.2	56.6	-52.4	2.00	2.00	0.00
2,400.0	12.38	58.07	2,393.3	2,420.09	44.4	71.3	-66.1	0.00	0.00	0.00
2,500.0	12.38	58.07	2,491.0	2,322.42	55.8	89.5	-83.0	0.00	0.00	0.00
2,600.0	12.38	58.07	2,588.7	2,224.74	67.1	107.7	-99.8	0.00	0.00	0.00
2,700.0	12.38	58.07	2,686.3	2,127.07	78.4	125.9	-116.7	0.00	0.00	0.00
2,800.0	12.38	58.07	2,784.0	2,029.39	89.8	144.1	-133.6	0.00	0.00	0.00
2,900.0	12.38	58.07	2,881.7	1,931.72	101.1	162.3	-150.5	0.00	0.00	0.00
3,000.0	12.38	58.07	2,979.4	1,834.04	112.5	180.5	-167.3	0.00	0.00	0.00
3,100.0	12.38	58.07	3,077.0	1,736.37	123.8	198.7	-184.2	0.00	0.00	0.00
3,200.0	12.38	58.07	3,174.7	1,638.70	135.1	216.9	-201.1	0.00	0.00	0.00
3,300.0	12.38	58.07	3,272.4	1,541.02	146.5	235.1	-217.9	0.00	0.00	0.00
3,400.0	12.38	58.07	3,370.1	1,443.35	157.8	253.3	-234.8	0.00	0.00	0.00
3,500.0	12.38	58.07	3,467.7	1,345.67	169.1	271.5	-251.7	0.00	0.00	0.00
3,600.0	12.38	58.07	3,565.4	1,248.00	180.5	289.7	-268.6	0.00	0.00	0.00
3,700.0	12.38	58.07	3,663.1	1,150.32	191.8	307.9	-285.4	0.00	0.00	0.00
3,800.0	12.38	58.07	3,760.7	1,052.65	203.2	326.1	-302.3	0.00	0.00	0.00
3,900.0	12.38	58.07	3,858.4	954.98	214.5	344.2	-319.2	0.00	0.00	0.00
4,000.0	12.38	58.07	3,956.1	857.30	225.8	362.4	-336.1	0.00	0.00	0.00
4,100.0	12.38	58.07	4,053.8	759.63	237.2	380.6	-352.9	0.00	0.00	0.00
4,200.0	12.38	58.07	4,151.4	661.95	248.5	398.8	-369.8	0.00	0.00	0.00
4,300.0	12.38	58.07	4,249.1	564.28	259.9	417.0	-386.7	0.00	0.00	0.00
4,400.0	12.38	58.07	4,346.8	466.61	271.2	435.2	-403.5	0.00	0.00	0.00
4,500.0	12.38	58.07	4,444.5	368.93	282.5	453.4	-420.4	0.00	0.00	0.00
4,600.0	12.38	58.07	4,542.1	271.26	293.9	471.6	-437.3	0.00	0.00	0.00
4,700.0	12.38	58.07	4,639.8	173.58	305.2	489.8	-454.2	0.00	0.00	0.00
4,800.0	12.38	58.07	4,737.5	75.91	316.6	508.0	-471.0	0.00	0.00	0.00

<b>Database:</b>	EDM 5000.1 Single User Db	<b>Local Co-ordinate Reference:</b>	Well MUSTANG X44-D14-34HNB
<b>Company:</b>	BONANZA CREEK ENERGY INC.	<b>TVD Reference:</b>	KB @ 4813.4usft
<b>Project:</b>	WELD COUNTY, COLORADO (NAD 83)	<b>MD Reference:</b>	KB @ 4813.4usft
<b>Site:</b>	SE SE SEC. 34 T4N R63W 6th P.M.	<b>North Reference:</b>	True
<b>Well:</b>	MUSTANG X44-D14-34HNB	<b>Survey Calculation Method:</b>	Minimum Curvature
<b>Wellbore:</b>	ORIGINAL WELLBORE		
<b>Design:</b>	PROPOSAL #2		

## Planned Survey

MD (usft)	Inc (°)	Azi (°)	TVD (usft)	SS (usft)	+N/-S (usft)	+E/-W (usft)	Vertical Section (usft)	Dogleg Rate (°/100usft)	Build Rate (°/100usft)	Turn Rate (°/100usft)
4,900.0	12.38	58.07	4,835.2	-21.77	327.9	526.2	-487.9	0.00	0.00	0.00
5,000.0	12.38	58.07	4,932.8	-119.44	339.2	544.4	-504.8	0.00	0.00	0.00
5,100.0	12.38	58.07	5,030.5	-217.11	350.6	562.6	-521.7	0.00	0.00	0.00
5,200.0	12.38	58.07	5,128.2	-314.79	361.9	580.8	-538.5	0.00	0.00	0.00
5,300.0	12.38	58.07	5,225.9	-412.46	373.3	599.0	-555.4	0.00	0.00	0.00
5,400.0	12.38	58.07	5,323.5	-510.14	384.6	617.2	-572.3	0.00	0.00	0.00
<b>END OF TANGENT</b>										
<b>5,402.4</b>	<b>12.38</b>	<b>58.07</b>	<b>5,325.9</b>	<b>-512.48</b>	<b>384.9</b>	<b>617.7</b>	<b>-572.7</b>	<b>0.00</b>	<b>0.00</b>	<b>0.00</b>
5,500.0	10.43	58.07	5,421.5	-608.15	395.1	634.0	-587.9	2.00	-2.00	0.00
5,600.0	8.43	58.07	5,520.2	-706.79	403.7	647.9	-600.8	2.00	-2.00	0.00
5,700.0	6.43	58.07	5,619.3	-805.95	410.6	658.9	-610.9	2.00	-2.00	0.00
5,800.0	4.43	58.07	5,718.9	-905.49	415.6	666.9	-618.4	2.00	-2.00	0.00
5,900.0	2.43	58.07	5,818.7	-1,005.31	418.7	672.0	-623.1	2.00	-2.00	0.00
6,000.0	0.43	58.07	5,918.7	-1,105.27	420.1	674.1	-625.0	2.00	-2.00	0.00
<b>EOD TO VERTICAL</b>										
<b>6,021.4</b>	<b>0.00</b>	<b>58.07</b>	<b>5,940.1</b>	<b>-1,126.67</b>	<b>420.1</b>	<b>674.2</b>	<b>-625.1</b>	<b>2.00</b>	<b>-2.00</b>	<b>0.00</b>
<b>KOP (12°/100ft BUR)</b>										
<b>6,051.4</b>	<b>0.00</b>	<b>0.00</b>	<b>5,970.1</b>	<b>-1,156.67</b>	<b>420.1</b>	<b>674.2</b>	<b>-625.1</b>	<b>0.00</b>	<b>0.00</b>	<b>0.00</b>
6,100.0	5.83	270.25	6,018.6	-1,205.19	420.1	671.7	-622.7	11.99	11.99	0.00
6,200.0	17.83	270.25	6,116.3	-1,302.89	420.2	651.3	-602.3	12.00	12.00	0.00
6,300.0	29.83	270.25	6,207.6	-1,394.20	420.4	610.9	-562.2	12.00	12.00	0.00
6,400.0	41.83	270.25	6,288.5	-1,475.13	420.6	552.5	-504.1	12.00	12.00	0.00
6,500.0	53.83	270.25	6,355.5	-1,542.14	421.0	478.5	-430.5	12.00	12.00	0.00
6,600.0	65.83	270.25	6,405.7	-1,592.30	421.3	392.2	-344.7	12.00	12.00	0.00
<b>START OF TANGENT</b>										
<b>6,676.4</b>	<b>75.00</b>	<b>270.25</b>	<b>6,431.3</b>	<b>-1,617.89</b>	<b>421.6</b>	<b>320.3</b>	<b>-273.1</b>	<b>12.00</b>	<b>12.00</b>	<b>0.00</b>
6,700.0	75.00	270.25	6,437.4	-1,624.00	421.7	297.5	-250.5	0.01	0.01	0.00
<b>END OF TANGENT</b>										
<b>6,776.4</b>	<b>75.00</b>	<b>270.25</b>	<b>6,457.2</b>	<b>-1,643.77</b>	<b>422.1</b>	<b>223.7</b>	<b>-177.1</b>	<b>0.00</b>	<b>0.00</b>	<b>0.00</b>
6,800.0	77.83	270.25	6,462.7	-1,649.31	422.2	200.8	-154.2	11.99	11.99	0.00
6,900.0	89.83	270.25	6,473.4	-1,660.04	422.6	101.6	-55.5	12.00	12.00	0.00
<b>HZ LP *NEW*: 1046ft FSL &amp; 589.1ft FEL of Sec 34</b>										
<b>6,901.4</b>	<b>90.00</b>	<b>270.25</b>	<b>6,473.4</b>	<b>-1,660.05</b>	<b>422.6</b>	<b>100.2</b>	<b>-54.1</b>	<b>12.00</b>	<b>12.00</b>	<b>0.00</b>
7,000.0	90.00	270.25	6,473.4	-1,660.05	423.0	1.6	43.9	0.00	0.00	0.00
7,100.0	90.00	270.25	6,473.4	-1,660.05	423.5	-98.4	143.4	0.00	0.00	0.00
7,200.0	90.00	270.25	6,473.4	-1,660.05	423.9	-198.4	242.9	0.00	0.00	0.00
7,300.0	90.00	270.25	6,473.4	-1,660.05	424.3	-298.4	342.3	0.00	0.00	0.00
7,400.0	90.00	270.25	6,473.4	-1,660.05	424.8	-398.4	441.8	0.00	0.00	0.00
7,500.0	90.00	270.25	6,473.4	-1,660.05	425.2	-498.4	541.3	0.00	0.00	0.00
7,600.0	90.00	270.25	6,473.4	-1,660.05	425.7	-598.4	640.7	0.00	0.00	0.00
7,700.0	90.00	270.25	6,473.4	-1,660.05	426.1	-698.4	740.2	0.00	0.00	0.00
7,800.0	90.00	270.25	6,473.4	-1,660.05	426.5	-798.4	839.7	0.00	0.00	0.00
7,900.0	90.00	270.25	6,473.4	-1,660.05	427.0	-898.4	939.1	0.00	0.00	0.00
8,000.0	90.00	270.25	6,473.4	-1,660.05	427.4	-998.4	1,038.6	0.00	0.00	0.00
8,100.0	90.00	270.25	6,473.4	-1,660.05	427.8	-1,098.4	1,138.1	0.00	0.00	0.00
8,200.0	90.00	270.25	6,473.4	-1,660.05	428.3	-1,198.4	1,237.5	0.00	0.00	0.00
8,300.0	90.00	270.25	6,473.4	-1,660.05	428.7	-1,298.4	1,337.0	0.00	0.00	0.00
8,400.0	90.00	270.25	6,473.4	-1,660.05	429.1	-1,398.4	1,436.5	0.00	0.00	0.00
8,500.0	90.00	270.25	6,473.4	-1,660.05	429.6	-1,498.4	1,535.9	0.00	0.00	0.00
8,600.0	90.00	270.25	6,473.4	-1,660.05	430.0	-1,598.4	1,635.4	0.00	0.00	0.00
8,700.0	90.00	270.25	6,473.4	-1,660.05	430.5	-1,698.4	1,734.9	0.00	0.00	0.00
8,800.0	90.00	270.25	6,473.4	-1,660.05	430.9	-1,798.4	1,834.3	0.00	0.00	0.00
8,900.0	90.00	270.25	6,473.4	-1,660.05	431.3	-1,898.4	1,933.8	0.00	0.00	0.00



<b>Database:</b>	EDM 5000.1 Single User Db	<b>Local Co-ordinate Reference:</b>	Well MUSTANG X44-D14-34HNB
<b>Company:</b>	BONANZA CREEK ENERGY INC.	<b>TVD Reference:</b>	KB @ 4813.4usft
<b>Project:</b>	WELD COUNTY, COLORADO (NAD 83)	<b>MD Reference:</b>	KB @ 4813.4usft
<b>Site:</b>	SE SE SEC. 34 T4N R63W 6th P.M.	<b>North Reference:</b>	True
<b>Well:</b>	MUSTANG X44-D14-34HNB	<b>Survey Calculation Method:</b>	Minimum Curvature
<b>Wellbore:</b>	ORIGINAL WELLBORE		
<b>Design:</b>	PROPOSAL #2		

## Planned Survey

MD (usft)	Inc (°)	Azi (°)	TVD (usft)	SS (usft)	+N/-S (usft)	+E/-W (usft)	Vertical Section (usft)	Dogleg Rate (°/100usft)	Build Rate (°/100usft)	Turn Rate (°/100usft)
9,000.0	90.00	270.25	6,473.4	-1,660.05	431.8	-1,998.4	2,033.3	0.00	0.00	0.00
9,100.0	90.00	270.25	6,473.4	-1,660.05	432.2	-2,098.4	2,132.7	0.00	0.00	0.00
9,200.0	90.00	270.25	6,473.4	-1,660.05	432.6	-2,198.4	2,232.2	0.00	0.00	0.00
9,300.0	90.00	270.25	6,473.4	-1,660.05	433.1	-2,298.4	2,331.6	0.00	0.00	0.00
9,400.0	90.00	270.25	6,473.4	-1,660.05	433.5	-2,398.4	2,431.1	0.00	0.00	0.00
9,500.0	90.00	270.25	6,473.4	-1,660.05	433.9	-2,498.4	2,530.6	0.00	0.00	0.00
9,600.0	90.00	270.25	6,473.4	-1,660.05	434.4	-2,598.4	2,630.0	0.00	0.00	0.00
9,700.0	90.00	270.25	6,473.4	-1,660.05	434.8	-2,698.4	2,729.5	0.00	0.00	0.00
9,800.0	90.00	270.25	6,473.4	-1,660.05	435.3	-2,798.4	2,829.0	0.00	0.00	0.00
9,900.0	90.00	270.25	6,473.4	-1,660.05	435.7	-2,898.4	2,928.4	0.00	0.00	0.00
10,000.0	90.00	270.25	6,473.4	-1,660.05	436.1	-2,998.4	3,027.9	0.00	0.00	0.00
10,100.0	90.00	270.25	6,473.4	-1,660.05	436.6	-3,098.4	3,127.4	0.00	0.00	0.00
10,200.0	90.00	270.25	6,473.4	-1,660.05	437.0	-3,198.4	3,226.8	0.00	0.00	0.00
10,300.0	90.00	270.25	6,473.4	-1,660.05	437.4	-3,298.4	3,326.3	0.00	0.00	0.00
10,400.0	90.00	270.25	6,473.4	-1,660.05	437.9	-3,398.4	3,425.8	0.00	0.00	0.00
10,500.0	90.00	270.25	6,473.4	-1,660.05	438.3	-3,498.4	3,525.2	0.00	0.00	0.00
10,600.0	90.00	270.25	6,473.4	-1,660.05	438.7	-3,598.4	3,624.7	0.00	0.00	0.00
10,700.0	90.00	270.25	6,473.4	-1,660.05	439.2	-3,698.4	3,724.2	0.00	0.00	0.00
10,800.0	90.00	270.25	6,473.4	-1,660.05	439.6	-3,798.4	3,823.6	0.00	0.00	0.00
10,900.0	90.00	270.25	6,473.4	-1,660.05	440.1	-3,898.4	3,923.1	0.00	0.00	0.00
11,000.0	90.00	270.25	6,473.4	-1,660.05	440.5	-3,998.4	4,022.6	0.00	0.00	0.00
<b>BHL: 1053ft FSL &amp; 470ft FWL of Sec 34</b>										
<b>11,076.2</b>	<b>90.00</b>	<b>270.25</b>	<b>6,473.4</b>	<b>-1,660.00</b>	<b>440.8</b>	<b>-4,074.5</b>	<b>4,098.3</b>	<b>0.00</b>	<b>0.00</b>	<b>0.00</b>

## Targets

Target Name	Dip Angle (°)	Dip Dir. (°)	TVD (usft)	+N/-S (usft)	+E/-W (usft)	Northing (usft)	Easting (usft)	Latitude	Longitude
BHL - MUSTANG X44 - hit/miss target - plan hits target center - Point	0.00	0.00	6,473.4	440.8	-4,074.5	1,341,082.70	3,298,110.37	40.264742	-104.431731
KOP - MUSTANG X44 - plan hits target center - Point	0.00	0.00	5,970.1	420.1	674.2	1,341,120.00	3,302,858.80	40.264686	-104.414715
HZ LP *NEW* - MUSTANG X44 - plan misses target center by 3.5usft at 6843.6usft MD (6469.9 TVD, 422.4 N, 157.9 E) - Point	0.00	0.00	6,473.4	422.4	158.2	1,341,115.99	3,302,342.87	40.264692	-104.416564

<b>Database:</b>	EDM 5000.1 Single User Db	<b>Local Co-ordinate Reference:</b>	Well MUSTANG X44-D14-34HNB
<b>Company:</b>	BONANZA CREEK ENERGY INC.	<b>TVD Reference:</b>	KB @ 4813.4usft
<b>Project:</b>	WELD COUNTY, COLORADO (NAD 83)	<b>MD Reference:</b>	KB @ 4813.4usft
<b>Site:</b>	SE SE SEC. 34 T4N R63W 6th P.M.	<b>North Reference:</b>	True
<b>Well:</b>	MUSTANG X44-D14-34HNB	<b>Survey Calculation Method:</b>	Minimum Curvature
<b>Wellbore:</b>	ORIGINAL WELLBORE		
<b>Design:</b>	PROPOSAL #2		

## Plan Annotations

MD (usft)	TVD (usft)	Local Coordinates		Comment
		+N/-S (usft)	+E/-W (usft)	
0.0	0.0	0.0	0.0	SHL: 624ft FSL & 683ft FEL of Sec 34
1,700.0	1,700.0	0.0	0.0	START NUDGE (2°/100ft BUR)
2,319.1	2,314.3	35.2	56.6	EOB TO 12.38° INC
5,402.4	5,325.9	384.9	617.7	END OF TANGENT
6,021.4	5,940.1	420.1	674.2	EOD TO VERTICAL
6,051.4	5,970.1	420.1	674.2	KOP (12°/100ft BUR)
6,676.4	6,431.3	421.6	320.3	START OF TANGENT
6,776.4	6,457.2	422.1	223.7	END OF TANGENT
6,901.4	6,473.4	422.6	100.2	HZ LP *NEW*: 1046ft FSL & 589.1ft FEL of Sec 34
11,076.2	6,473.4	440.8	-4,074.5	BHL: 1053ft FSL & 470ft FWL of Sec 34