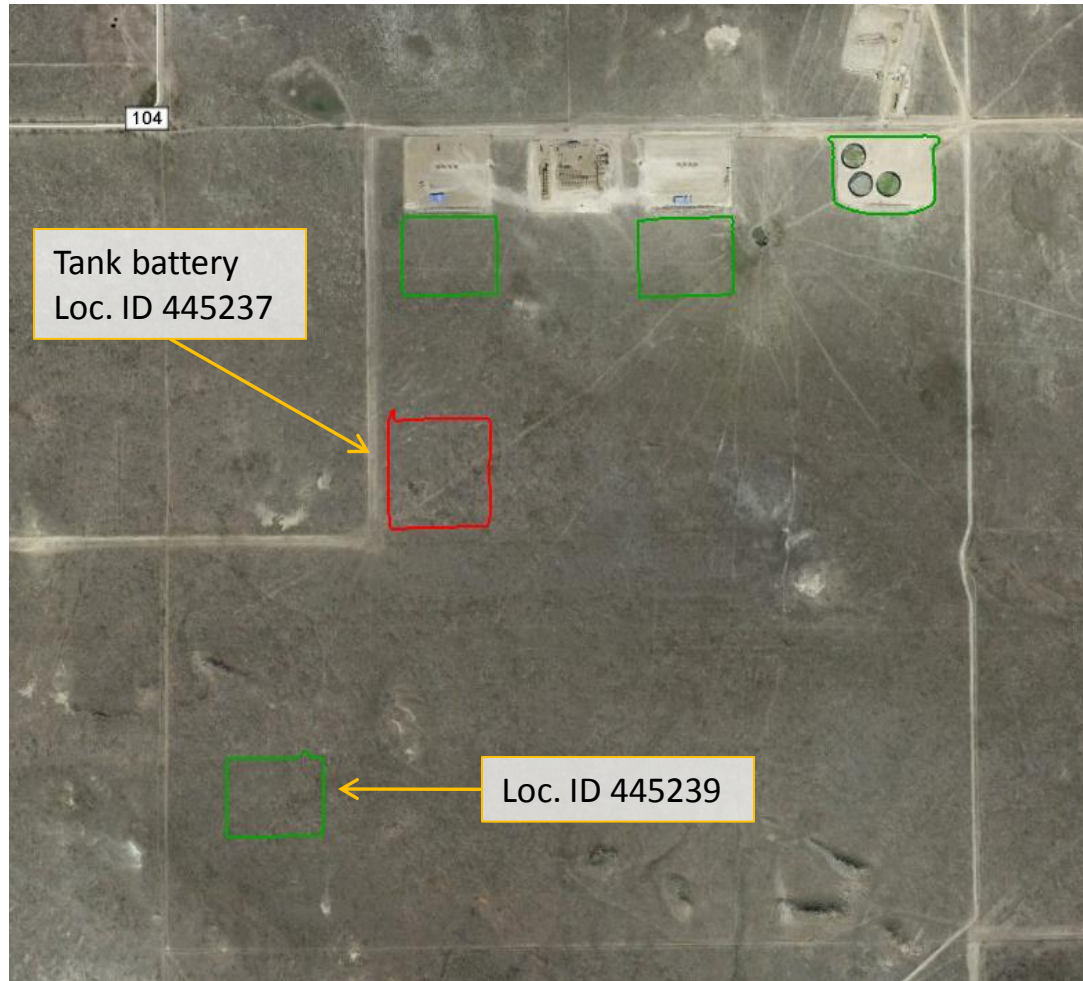


Location Overview



Google Earth aerial photo taken 9/7/2013 of the LC24-13 location highlighted in green. Total area of 7.2 acres was mapped using a Trimble Juno 3B handheld device. Tank battery servicing the well location highlighted in red.

Stormwater Inspection



Photo 1. Photo taken from the entrance of the location, facing South. Tackifier has been applied to all fill and cut slopes on location.

Stormwater Inspection



Photo 2. Photo taken from the northeast sediment trap, facing West. Sediment trap approximately 4'x4'x3' with rock socks. Trench approximately 18"x12" (width xdepth) installed along the northern perimeter of location.

Stormwater Inspection



Photo 3. Photo taken from the northwest location, facing South. Cut slope has been stabilized with a tackifier.

Stormwater Inspection

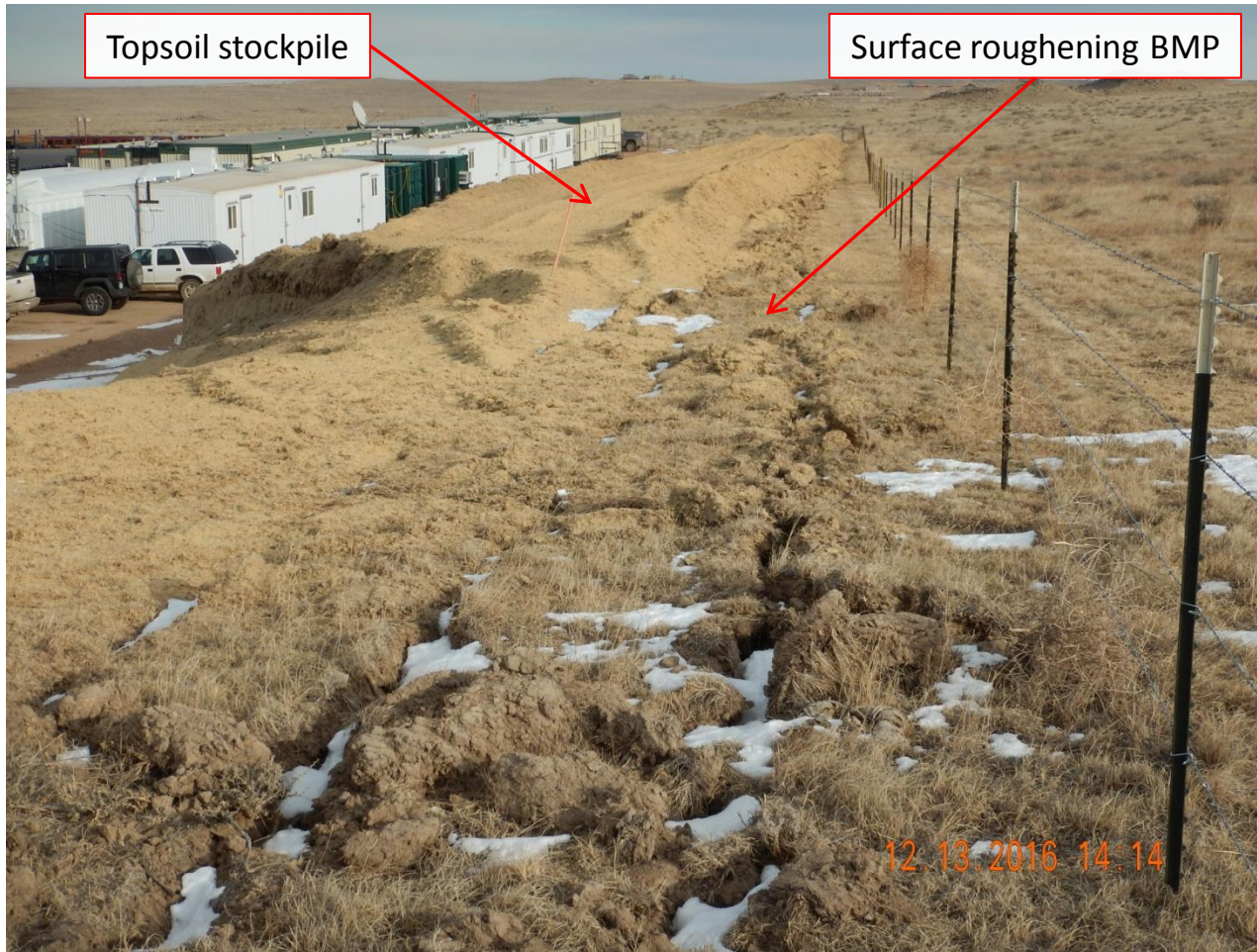


Photo 4. Photo taken from the southwest location, facing East. Surface roughening BMP installed along southern location with 3'-4' vegetated area between perimeter boundary.

Stormwater Inspection



Photo 5. Photo taken from the southwest pad location, facing East. Tackifier has been applied to cut slope but may need additional stabilization with a 1:1 slope.

Stormwater Inspection



Photo 6. Photo taken from the southeast location, facing North. Surface roughening BMP installed along eastern location with 5'-6' vegetated area between trench and BMP. A sediment trap approximately 4'x4'x3' with filter socks is installed at the northeast corner of location.

Stormwater Inspection



Photo 7. Photo taken from eastern location. Remove waste material from fence line per Rule 603.f.

Stormwater Inspection



Photo 8. Photo taken from eastern location, facing West. Tackifier applied to fill slope.