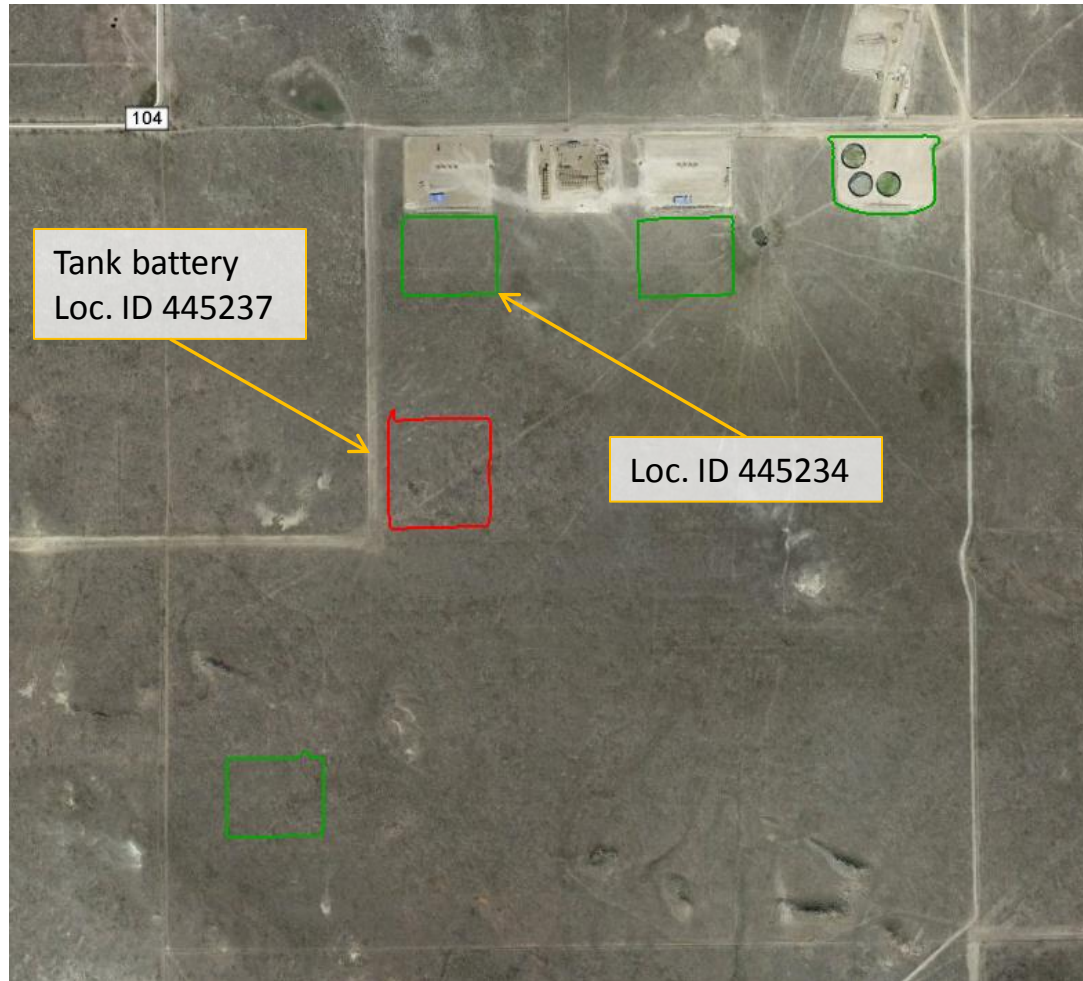


Location Overview



Google Earth aerial photo taken 9/7/2013 of the LC24-03 location highlighted in green. Total area of 7.2 acres was mapped using a Trimble Juno 3B handheld device. Tank battery servicing the well location highlighted in red.

Stormwater Inspection

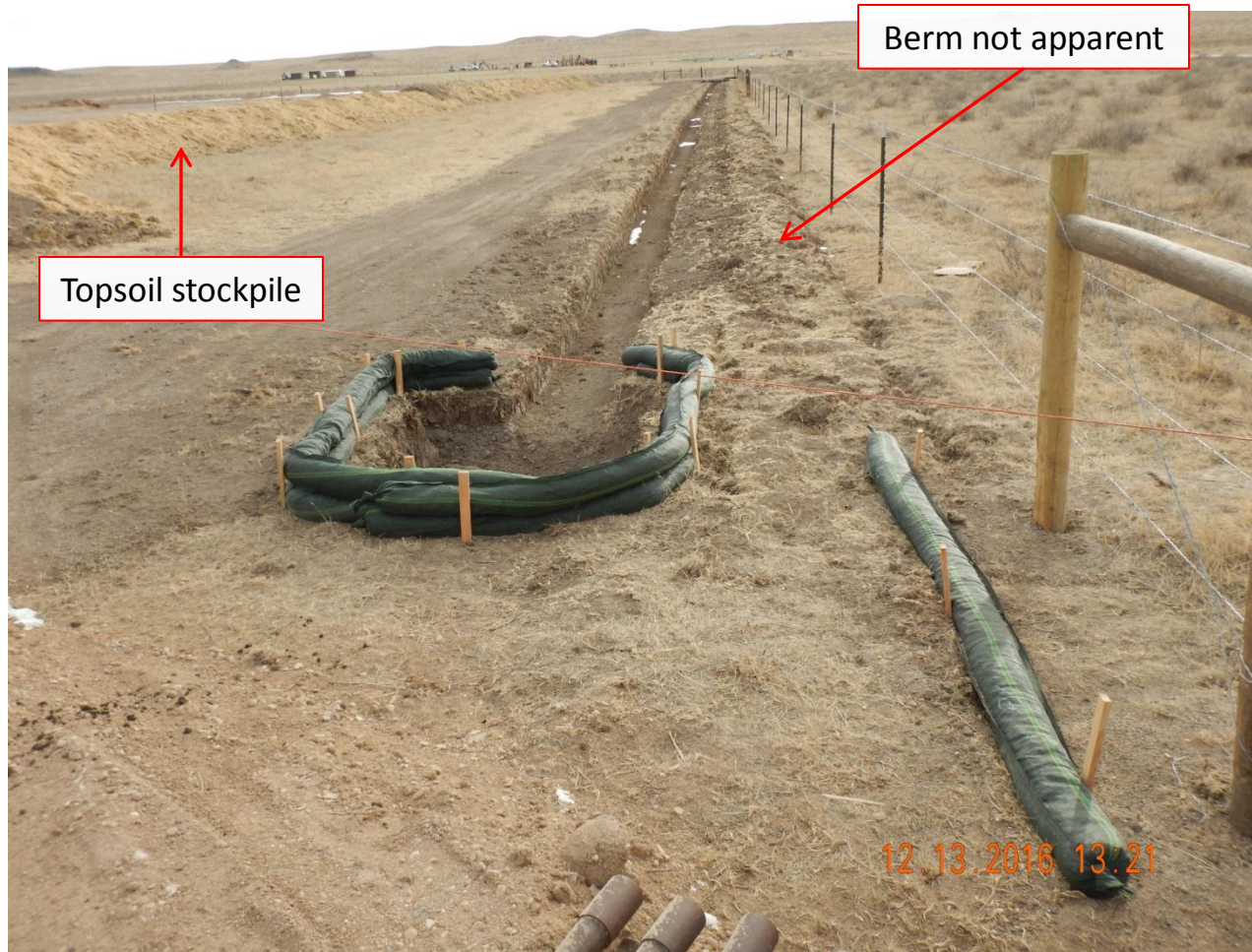


Photo 1. Photo taken from northwest location, facing South. Sediment trap approximately 4'x4'x2.5' with rock socks. Trench approximately 18"x12" (width x depth) installed along the western perimeter of location. No apparent berm associated with trench.

Stormwater Inspection



Photo 2. Photo taken from the southwest sediment trap north of the access road, facing South. Sediment trap approximately 4'x4'x2.5' with rock socks.

Stormwater Inspection



Photo 3. Photo taken from the southwest sediment trap south of the access road, facing South. Sediment trap approximately 4'x4'x2.5' with rock socks.

Stormwater Inspection



Photo 4. Photo taken from the previous sediment trap, facing East. Trench approximately 18"x12" (width x depth) installed along the southern perimeter of location. No apparent berm associated with trench.

Stormwater Inspection



Photo 5. Photo taken from the southern location, facing East. Unconsolidated soil dug out from the trench sprayed with tackifier but may need additional tackifier because the application rate appears too low.

Stormwater Inspection



Photo 6. Photo taken from the southeast sediment trap, facing North. Sediment trap approximately 4'x4'x2.5' with filter socks. Trench approximately 18"x12" (width x depth) installed along the eastern perimeter of location. Unconsolidated soil dug out from the trench has not been stabilized.

Stormwater Inspection



Photo 7. Photo taken from eastern location, facing North. Unconsolidated soil dug out from the trench has not been stabilized.

Stormwater Inspection



Photo 8. Photo taken from the northeast sediment trap, facing West. Sediment trap approximately 4'x3'x2' with rock socks. Trench approximately 18"x12" (width x depth) installed along the northern perimeter of location. A light application of tackifier has been applied to soil dug out from the trench. May need additional tackifier to stabilize soil.

Stormwater Inspection



Photo 9. Photo taken from the northwest sediment trap, facing East. Sediment trap approximately 4'x3'x2' with rock socks.

Stormwater Inspection



Photo 10. Photo taken from the western location, facing Southwest, along the topsoil stockpile. Tackifier applied to the topsoil stockpile. Not certain whether topsoil was seeded in addition to applying tackifier, but tackifier alone is not a long-term stabilization BMP to protect topsoil from erosion and weed establishment.

Stormwater Inspection



Photo 11. Photo taken from the western location, facing West, along the topsoil stockpile. May need to stabilize topsoil stockpile with additional tackifier in areas.