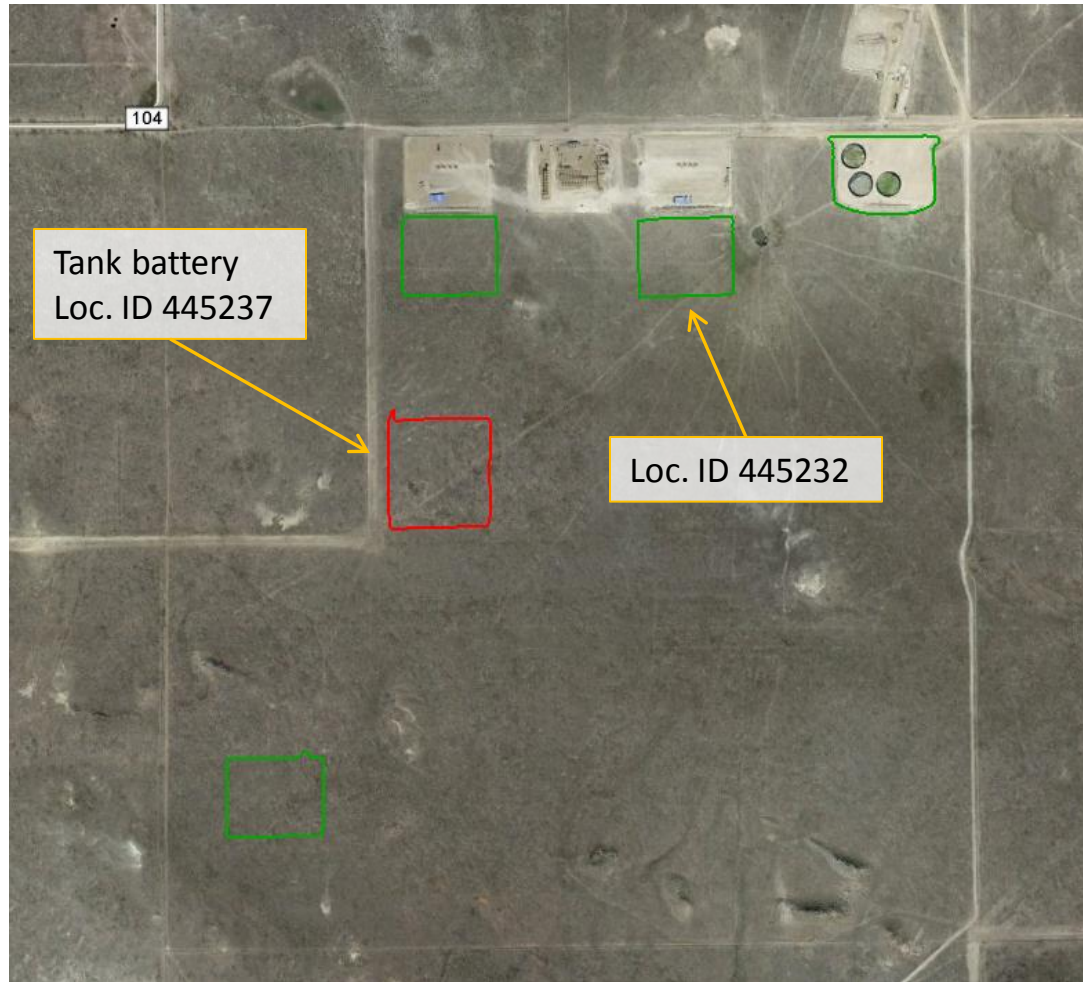


## Location Overview



Google Earth aerial photo taken 9/7/2013 of the LC24-02 location highlighted in green. Total area of 7.1 acres was mapped using a Trimble Juno 3B handheld device. Tank battery servicing the well location highlighted in red.

# Stormwater Inspection



**Photo 1.** Photo taken from southwest location, facing East. Trench approximately 18"x12" (width x depth) installed along the southern perimeter of location. No apparent berm associated with trench.



## Stormwater Inspection



**Photo 2.** Photo taken from the southeast sediment trap, facing East. Sediment trap approximately 4'x4'x2.5' with rock socks. Need to remove waste material from fence per Rule 603.f.

## Stormwater Inspection



**Photo 4.** Photo taken from southeast location, facing North. Trench approximately 18"x12" (width x depth) installed along the eastern perimeter of location. No apparent berm associated with trench.



# Stormwater Inspection



**Photo 4.** Photo taken from the east central sediment trap, facing North. Sediment trap approximately 4'x4'x2' with rock socks.

# Stormwater Inspection



**Photo 5.** Photo taken from the northeast location, facing South. Sediment trap approximately 4'x4'x2.5' with filter socks.



# Stormwater Inspection



**Photo 6.** Photo taken from the northern location, facing West. Vegetated area between disturbance area and perimeter of location.

## Stormwater Inspection



**Photo 7.** Photo taken from northwest location, facing South. Vegetated area between topsoil stockpile and perimeter of location.



## Stormwater Inspection



**Photo 8.** Photo taken from western pad cut slope, facing South. Cut slope does not appear to be stabilized (1:1 slope) and a 2:1 slope would be appropriate with additional stabilization measures. Remove waste material per Rule 603.f.

# Stormwater Inspection



**Photo 9.** Photo taken from the western location, facing South, along the topsoil stockpile. Tackifier applied to the topsoil stockpile and the east-facing edge. Not certain whether topsoil was seeded in addition to applying tackifier, but tackifier alone is not a long-term stabilization BMP to protect topsoil from erosion and weed establishment.



# Stormwater Inspection



**Photo 10.** Photo taken from the southern location, facing East. Remove waste material per Rule 603.f.

# Stormwater Inspection



**Photo 11.** Photo taken from the northeast location, facing North. Remove waste material per Rule 603.f.