

BONANZA CREEK ENERGY INC.

**WELD COUNTY, COLORADO (NAD 83)
NW NW SEC. 26 T5N R63W 6th P.M.
STATE NORTH PLATTE A11-E14-26HNC**

ORIGINAL WELLBORE

27 October, 2016

Plan: PROPOSAL #2





Project: WELD COUNTY, COLORADO (NAD 83)
Site: NW NW SEC. 26 T5N R63W 6th P.M.
Well: STATE NORTH PLATTE A11-E14-26HNC
Wellbore: ORIGINAL WELLBORE
Design: PROPOSAL #2

ANNOTATIONS

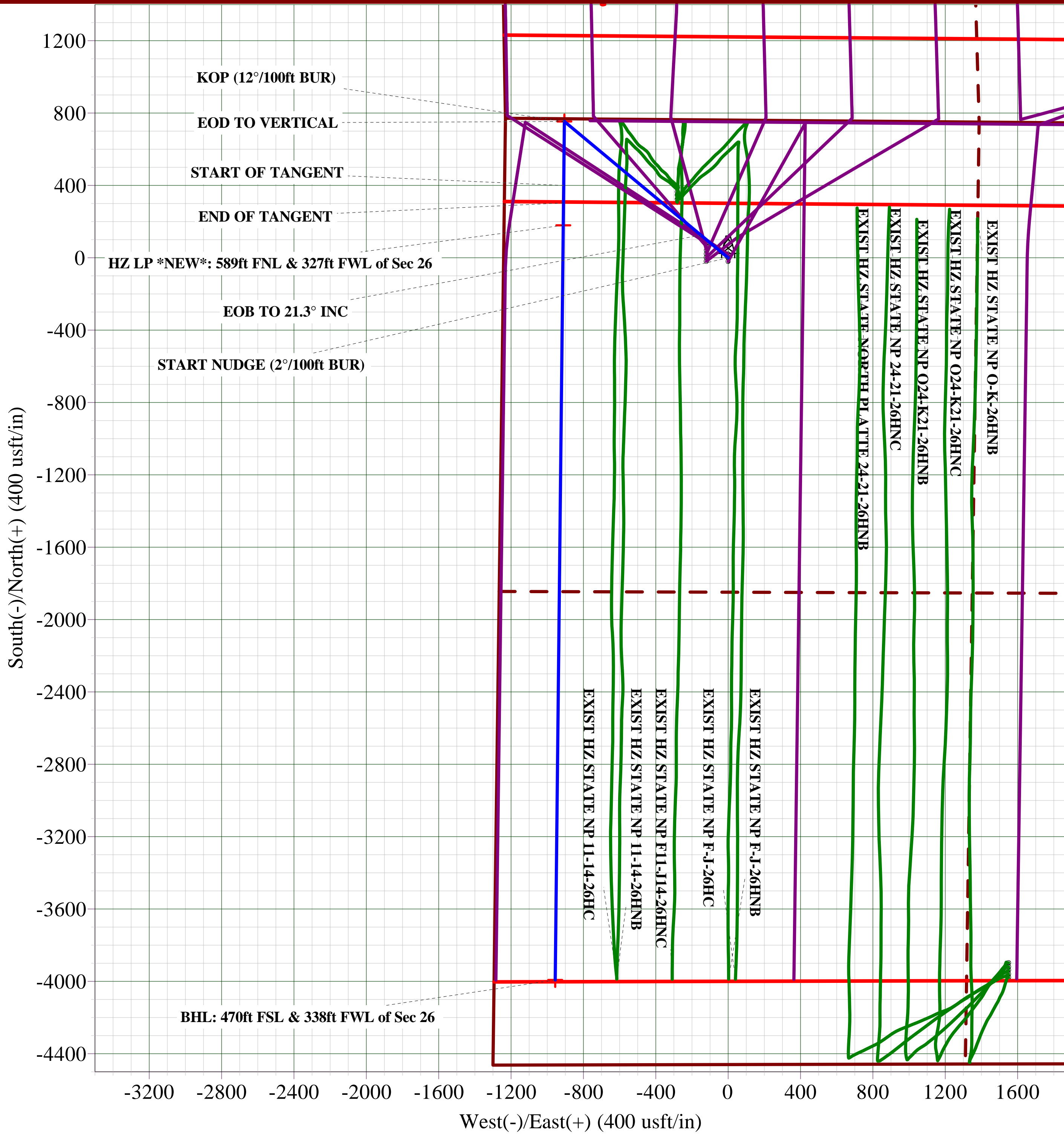
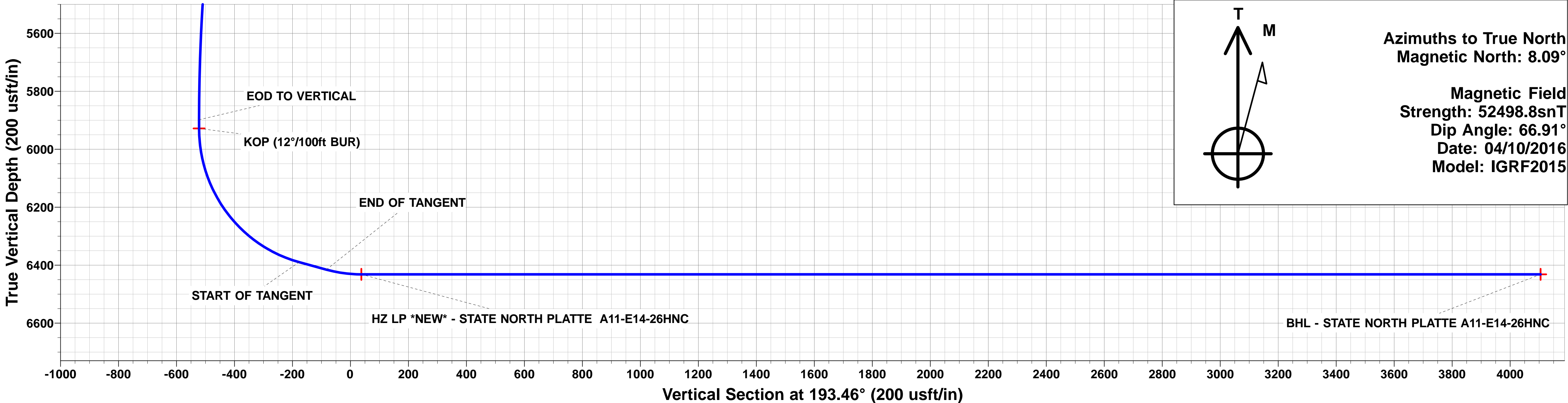
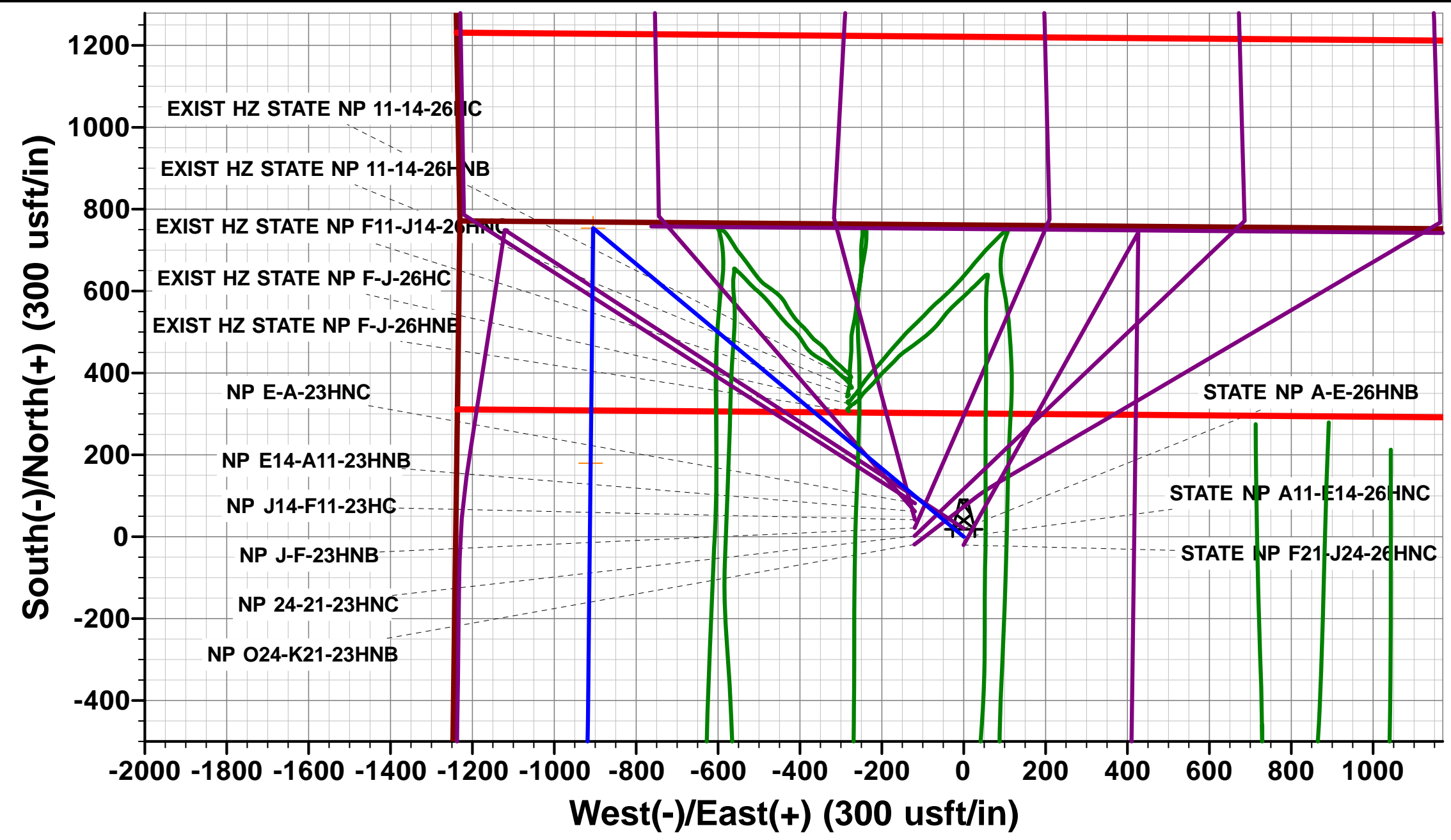
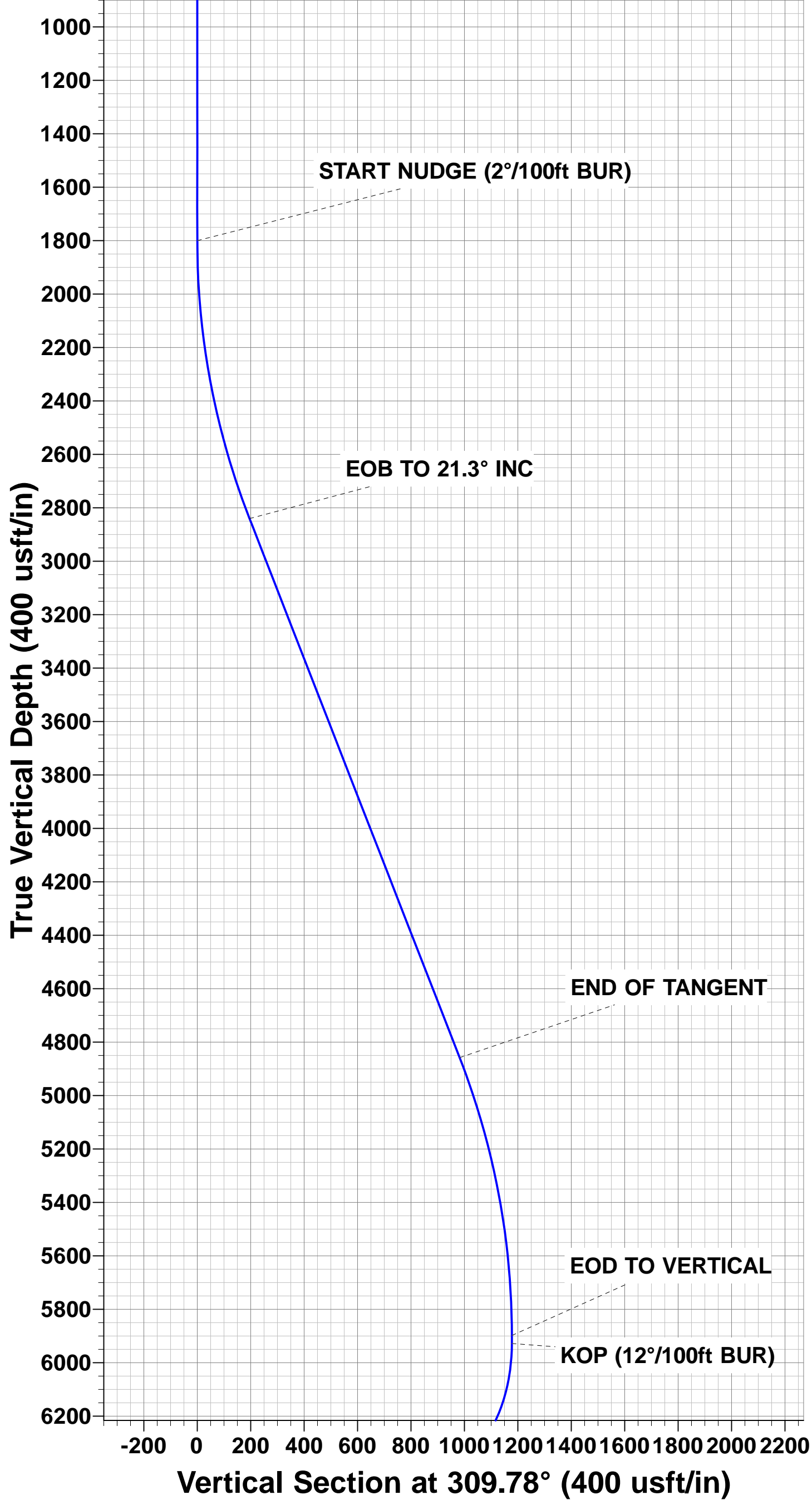
TVD	MD	Inc	Azi	+N/-S	+E/-W	VSect	Dep	Annotation
0.0	0.0	0.00	0.00	0.0	0.0	0.0	0.0	SHL: 761ft FNL & 1241ft FWL of Sec 26
1800.0	1800.0	0.00	0.00	0.0	0.0	0.0	0.0	START NUDGE (2°/100ft BUR)
2840.5	2864.8	21.30	309.78	125.2	-150.3	-86.7	195.6	EOB TO 21.3° INC
4858.0	5030.2	21.30	309.78	628.4	-754.7	-435.4	982.0	END OF TANGENT
5898.4	6094.9	0.00	309.78	753.5	-905.0	-522.1	1177.6	EOD TO VERTICAL
5928.4	6124.9	0.00	0.00	753.5	-905.0	-522.1	1177.6	KOP (12°/100ft BUR)
6389.6	6749.9	75.00	180.61	399.7	-908.8	-177.1	1531.5	START OF TANGENT
6415.5	6849.9	75.00	180.61	303.1	-909.8	-82.9	1628.1	END OF TANGENT
6431.7	6974.9	90.00	180.61	179.5	-911.1	37.5	1751.7	HZ LP *NEW*: 589ft FNL & 327ft FWL of Sec 26
6431.7	11147.0	90.00	180.61	-3992.3	-955.6	4105.1	5923.7	BHL: 470ft FSL & 338ft FWL of Sec 26

LOCAL COORDINATES:

SHL: 761ft FNL & 1241ft FWL of Sec 26
HZ LP *NEW*: 589ft FNL & 327ft FWL Sec 26
BHL: 470ft FSL & 338ft FWL Sec 26

WELLBORE TARGET DETAILS (LAT/LONG)

Name	TVD	+N/-S	+E/-W	Latitude	Longitude
KOP - STATE NORTH PLATTE A11-E14-26HNC	5928.4	753.5	-905.0	40.377466	-104.411252
BHL - STATE NORTH PLATTE A11-E14-26HNC	6431.7	-3992.3	-955.6	40.364439	-104.411433
HZ LP *NEW* - STATE NORTH PLATTE A11-E14-26HNC	6431.7	179.5	-911.1	40.375891	-104.411274



Database:	EDM 5000.1 Single User Db	Local Co-ordinate Reference:	Well STATE NORTH PLATTE A11-E14-26HNC
Company:	BONANZA CREEK ENERGY INC.	TVD Reference:	KB-EST @ 4581.7usft
Project:	WELD COUNTY, COLORADO (NAD 83)	MD Reference:	KB-EST @ 4581.7usft
Site:	NW NW SEC. 26 T5N R63W 6th P.M.	North Reference:	True
Well:	STATE NORTH PLATTE A11-E14-26HNC	Survey Calculation Method:	Minimum Curvature
Wellbore:	ORIGINAL WELLBORE		
Design:	PROPOSAL #2		

Project	WELD COUNTY, COLORADO (NAD 83)		
Map System:	US State Plane 1983	System Datum:	Mean Sea Level
Geo Datum:	North American Datum 1983		
Map Zone:	Colorado Northern Zone		Using geodetic scale factor

Site	NW NW SEC. 26 T5N R63W 6th P.M.		
Site Position:		Northing:	1,381,571.48 usft
From:	Lat/Long	Easting:	3,304,115.19 usft
Position Uncertainty:	0.0 usft	Slot Radius:	1.10000ft
		Latitude:	40.375677
		Longitude:	-104.408429
		Grid Convergence:	0.71 °

Well	STATE NORTH PLATTE A11-E14-26HNC		
Well Position	+N/-S	-101.7 usft	Northing:
	+E/-W	118.6 usft	Easting:
Position Uncertainty		0.0 usft	Wellhead Elevation:
			Latitude:
			Longitude:
			Ground Level:

Wellbore	ORIGINAL WELLBORE				
Magnetics	Model Name	Sample Date	Declination (°)	Dip Angle (°)	Field Strength (nT)
	IGRF2015	04/10/2016	8.09	66.91	52,499

Design	PROPOSAL #2			
Audit Notes:				
Version:	Phase:	PROTOTYPE	Tie On Depth:	0.0
Vertical Section:	Depth From (TVD) (usft)	+N/-S (usft)	+E/-W (usft)	Direction (°)
	0.0	0.0	0.0	193.46

Plan Sections											
MD (usft)	Inc (°)	Azi (°)	Vertical Depth	SS (usft)	+N/-S (usft)	+E/-W (usft)	Dogleg Rate (°/100usft)	Build Rate (°/100usft)	Turn Rate (°/100usft)	TFO (°)	Target
0.0	0.00	0.00	0.0	-4,581.7	0.0	0.0	0.00	0.00	0.00	0.00	
1,800.0	0.00	0.00	1,800.0	-2,781.7	0.0	0.0	0.00	0.00	0.00	0.00	
2,864.8	21.30	309.78	2,840.4	-1,741.3	125.2	-150.3	2.00	2.00	0.00	309.78	
5,030.2	21.30	309.78	4,858.0	276.3	628.4	-754.7	0.00	0.00	0.00	0.00	
6,094.9	0.00	0.00	5,898.4	1,316.7	753.5	-905.0	2.00	-2.00	0.00	180.00	
6,124.9	0.00	0.00	5,928.4	1,346.7	753.5	-905.0	0.00	0.00	0.00	0.00	KOP - STATE NOR
6,749.9	75.00	180.61	6,389.6	1,807.9	399.6	-908.8	12.00	12.00	0.00	180.61	
6,849.9	75.00	180.61	6,415.5	1,833.8	303.1	-909.8	0.00	0.00	0.00	0.00	
6,974.9	90.00	180.61	6,431.7	1,850.0	179.5	-911.1	12.00	12.00	0.00	0.00	
11,147.0	90.00	180.61	6,431.7	1,850.0	-3,992.3	-955.6	0.00	0.00	0.00	57.27	BHL - STATE NOR

Database:	EDM 5000.1 Single User Db	Local Co-ordinate Reference:	Well STATE NORTH PLATTE A11-E14-26HNC
Company:	BONANZA CREEK ENERGY INC.	TVD Reference:	KB-EST @ 4581.7usft
Project:	WELD COUNTY, COLORADO (NAD 83)	MD Reference:	KB-EST @ 4581.7usft
Site:	NW NW SEC. 26 T5N R63W 6th P.M.	North Reference:	True
Well:	STATE NORTH PLATTE A11-E14-26HNC	Survey Calculation Method:	Minimum Curvature
Wellbore:	ORIGINAL WELLBORE		
Design:	PROPOSAL #2		

Planned Survey

MD (usft)	Inc (°)	Azi (°)	TVD (usft)	SS (usft)	+N/-S (usft)	+E/-W (usft)	Vertical Section (usft)	Dogleg Rate (°/100usft)	Build Rate (°/100usft)	Turn Rate (°/100usft)
SHL: 761ft FNL & 1241ft FWL of Sec 26										
0.0	0.00	0.00	0.0	4,581.70	0.0	0.0	0.0	0.00	0.00	0.00
100.0	0.00	0.00	100.0	4,481.70	0.0	0.0	0.0	0.00	0.00	0.00
200.0	0.00	0.00	200.0	4,381.70	0.0	0.0	0.0	0.00	0.00	0.00
300.0	0.00	0.00	300.0	4,281.70	0.0	0.0	0.0	0.00	0.00	0.00
400.0	0.00	0.00	400.0	4,181.70	0.0	0.0	0.0	0.00	0.00	0.00
500.0	0.00	0.00	500.0	4,081.70	0.0	0.0	0.0	0.00	0.00	0.00
600.0	0.00	0.00	600.0	3,981.70	0.0	0.0	0.0	0.00	0.00	0.00
700.0	0.00	0.00	700.0	3,881.70	0.0	0.0	0.0	0.00	0.00	0.00
800.0	0.00	0.00	800.0	3,781.70	0.0	0.0	0.0	0.00	0.00	0.00
900.0	0.00	0.00	900.0	3,681.70	0.0	0.0	0.0	0.00	0.00	0.00
1,000.0	0.00	0.00	1,000.0	3,581.70	0.0	0.0	0.0	0.00	0.00	0.00
1,100.0	0.00	0.00	1,100.0	3,481.70	0.0	0.0	0.0	0.00	0.00	0.00
1,200.0	0.00	0.00	1,200.0	3,381.70	0.0	0.0	0.0	0.00	0.00	0.00
1,300.0	0.00	0.00	1,300.0	3,281.70	0.0	0.0	0.0	0.00	0.00	0.00
1,400.0	0.00	0.00	1,400.0	3,181.70	0.0	0.0	0.0	0.00	0.00	0.00
1,500.0	0.00	0.00	1,500.0	3,081.70	0.0	0.0	0.0	0.00	0.00	0.00
1,600.0	0.00	0.00	1,600.0	2,981.70	0.0	0.0	0.0	0.00	0.00	0.00
1,700.0	0.00	0.00	1,700.0	2,881.70	0.0	0.0	0.0	0.00	0.00	0.00
START NUDGE (2°/100ft BUR)										
1,800.0	0.00	0.00	1,800.0	2,781.70	0.0	0.0	0.0	0.00	0.00	0.00
1,900.0	2.00	309.78	1,900.0	2,681.72	1.1	-1.3	-0.8	2.00	2.00	0.00
2,000.0	4.00	309.78	1,999.8	2,581.86	4.5	-5.4	-3.1	2.00	2.00	0.00
2,100.0	6.00	309.78	2,099.5	2,482.25	10.0	-12.1	-7.0	2.00	2.00	0.00
2,200.0	8.00	309.78	2,198.7	2,383.00	17.8	-21.4	-12.4	2.00	2.00	0.00
2,300.0	10.00	309.78	2,297.5	2,284.23	27.8	-33.4	-19.3	2.00	2.00	0.00
2,400.0	12.00	309.78	2,395.6	2,186.08	40.1	-48.1	-27.8	2.00	2.00	0.00
2,500.0	14.00	309.78	2,493.1	2,088.64	54.4	-65.4	-37.7	2.00	2.00	0.00
2,600.0	16.00	309.78	2,589.6	1,992.06	71.0	-85.3	-49.2	2.00	2.00	0.00
2,700.0	18.00	309.78	2,685.3	1,896.43	89.7	-107.8	-62.2	2.00	2.00	0.00
2,800.0	20.00	309.78	2,779.8	1,801.88	110.5	-132.8	-76.6	2.00	2.00	0.00
EOB TO 21.3° INC										
2,864.8	21.30	309.78	2,840.5	1,741.25	125.2	-150.3	-86.7	2.00	2.00	0.00
2,900.0	21.30	309.78	2,873.2	1,708.45	133.3	-160.2	-92.4	0.00	0.00	0.00
3,000.0	21.30	309.78	2,966.4	1,615.28	156.6	-188.1	-108.5	0.00	0.00	0.00
3,100.0	21.30	309.78	3,059.6	1,522.11	179.8	-216.0	-124.6	0.00	0.00	0.00
3,200.0	21.30	309.78	3,152.8	1,428.94	203.1	-243.9	-140.7	0.00	0.00	0.00
3,300.0	21.30	309.78	3,245.9	1,335.76	226.3	-271.8	-156.8	0.00	0.00	0.00
3,400.0	21.30	309.78	3,339.1	1,242.59	249.5	-299.7	-172.9	0.00	0.00	0.00
3,500.0	21.30	309.78	3,432.3	1,149.42	272.8	-327.6	-189.0	0.00	0.00	0.00
3,600.0	21.30	309.78	3,525.5	1,056.25	296.0	-355.5	-205.1	0.00	0.00	0.00
3,700.0	21.30	309.78	3,618.6	963.07	319.2	-383.4	-221.2	0.00	0.00	0.00
3,800.0	21.30	309.78	3,711.8	869.90	342.5	-411.3	-237.3	0.00	0.00	0.00
3,900.0	21.30	309.78	3,805.0	776.73	365.7	-439.3	-253.4	0.00	0.00	0.00
4,000.0	21.30	309.78	3,898.1	683.56	389.0	-467.2	-269.5	0.00	0.00	0.00
4,100.0	21.30	309.78	3,991.3	590.39	412.2	-495.1	-285.6	0.00	0.00	0.00
4,200.0	21.30	309.78	4,084.5	497.21	435.4	-523.0	-301.7	0.00	0.00	0.00
4,300.0	21.30	309.78	4,177.7	404.04	458.7	-550.9	-317.8	0.00	0.00	0.00
4,400.0	21.30	309.78	4,270.8	310.87	481.9	-578.8	-333.9	0.00	0.00	0.00
4,500.0	21.30	309.78	4,364.0	217.70	505.2	-606.7	-350.0	0.00	0.00	0.00
4,600.0	21.30	309.78	4,457.2	124.53	528.4	-634.6	-366.1	0.00	0.00	0.00
4,700.0	21.30	309.78	4,550.3	31.35	551.6	-662.5	-382.2	0.00	0.00	0.00
4,800.0	21.30	309.78	4,643.5	-61.82	574.9	-690.4	-398.3	0.00	0.00	0.00

Database:	EDM 5000.1 Single User Db	Local Co-ordinate Reference:	Well STATE NORTH PLATTE A11-E14-26HNC
Company:	BONANZA CREEK ENERGY INC.	TVD Reference:	KB-EST @ 4581.7usft
Project:	WELD COUNTY, COLORADO (NAD 83)	MD Reference:	KB-EST @ 4581.7usft
Site:	NW NW SEC. 26 T5N R63W 6th P.M.	North Reference:	True
Well:	STATE NORTH PLATTE A11-E14-26HNC	Survey Calculation Method:	Minimum Curvature
Wellbore:	ORIGINAL WELLBORE		
Design:	PROPOSAL #2		

Planned Survey

MD (usft)	Inc (°)	Azi (°)	TVD (usft)	SS (usft)	+N/-S (usft)	+E/-W (usft)	Vertical Section (usft)	Dogleg Rate (°/100usft)	Build Rate (°/100usft)	Turn Rate (°/100usft)
4,900.0	21.30	309.78	4,736.7	-154.99	598.1	-718.4	-414.4	0.00	0.00	0.00
5,000.0	21.30	309.78	4,829.9	-248.16	621.3	-746.3	-430.6	0.00	0.00	0.00
END OF TANGENT										
5,030.2	21.30	309.78	4,858.0	-276.30	628.4	-754.7	-435.4	0.00	0.00	0.00
5,100.0	19.90	309.78	4,923.3	-341.64	644.1	-773.6	-446.3	2.00	-2.00	0.00
5,200.0	17.90	309.78	5,017.9	-436.24	664.8	-798.5	-460.7	2.00	-2.00	0.00
5,300.0	15.90	309.78	5,113.6	-531.92	683.4	-820.8	-473.6	2.00	-2.00	0.00
5,400.0	13.90	309.78	5,210.3	-628.55	699.8	-840.5	-484.9	2.00	-2.00	0.00
5,500.0	11.90	309.78	5,307.7	-726.02	714.1	-857.7	-494.8	2.00	-2.00	0.00
5,600.0	9.90	309.78	5,405.9	-824.22	726.2	-872.2	-503.2	2.00	-2.00	0.00
5,700.0	7.90	309.78	5,504.7	-923.01	736.1	-884.1	-510.1	2.00	-2.00	0.00
5,800.0	5.90	309.78	5,604.0	-1,022.28	743.8	-893.3	-515.4	2.00	-2.00	0.00
5,900.0	3.90	309.78	5,703.6	-1,121.91	749.3	-899.9	-519.2	2.00	-2.00	0.00
6,000.0	1.90	309.78	5,803.5	-1,221.77	752.5	-903.8	-521.4	2.00	-2.00	0.00
EOD TO VERTICAL										
6,094.9	0.00	309.78	5,898.4	-1,316.69	753.5	-905.0	-522.1	2.00	-2.00	0.00
6,100.0	0.00	0.00	5,903.5	-1,321.76	753.5	-905.0	-522.1	0.00	0.00	0.00
KOP (12°/100ft BUR)										
6,124.9	0.00	0.00	5,928.4	-1,346.69	753.5	-905.0	-522.1	0.00	0.00	0.00
6,200.0	9.01	180.61	6,003.1	-1,421.45	747.6	-905.1	-516.4	12.00	12.00	0.00
6,300.0	21.01	180.61	6,099.6	-1,517.86	721.8	-905.3	-491.2	12.00	12.00	0.00
6,400.0	33.01	180.61	6,188.5	-1,606.79	676.5	-905.8	-447.0	12.00	12.00	0.00
6,500.0	45.01	180.61	6,266.1	-1,684.36	613.6	-906.5	-385.8	12.00	12.00	0.00
6,600.0	57.01	180.61	6,328.9	-1,747.17	536.1	-907.3	-310.1	12.00	12.00	0.00
6,700.0	69.01	180.61	6,374.2	-1,792.47	447.1	-908.3	-223.4	12.00	12.00	0.00
START OF TANGENT										
6,749.9	75.00	180.61	6,389.6	-1,807.89	399.7	-908.8	-177.1	12.00	12.00	0.00
6,800.0	75.00	180.61	6,402.6	-1,820.85	351.3	-909.3	-130.0	0.00	0.00	0.00
END OF TANGENT										
6,849.9	75.00	180.61	6,415.5	-1,833.78	303.1	-909.8	-82.9	0.00	0.00	0.00
6,900.0	81.01	180.61	6,425.9	-1,844.18	254.1	-910.3	-35.2	12.00	12.00	0.00
HZ LP *NEW*: 589ft FNL & 327ft FWL of Sec 26										
6,974.9	90.00	180.61	6,431.7	-1,850.05	179.5	-911.1	37.5	12.00	12.00	0.00
7,000.0	90.00	180.61	6,431.7	-1,850.05	154.4	-911.4	62.0	0.00	0.00	0.00
7,100.0	90.00	180.61	6,431.7	-1,850.05	54.4	-912.4	159.5	0.00	0.00	0.00
7,200.0	90.00	180.61	6,431.7	-1,850.05	-45.6	-913.5	257.0	0.00	0.00	0.00
7,300.0	90.00	180.61	6,431.7	-1,850.05	-145.6	-914.6	354.5	0.00	0.00	0.00
7,400.0	90.00	180.61	6,431.7	-1,850.05	-245.5	-915.6	451.9	0.00	0.00	0.00
7,500.0	90.00	180.61	6,431.7	-1,850.05	-345.5	-916.7	549.4	0.00	0.00	0.00
7,600.0	90.00	180.61	6,431.7	-1,850.05	-445.5	-917.8	646.9	0.00	0.00	0.00
7,700.0	90.00	180.61	6,431.7	-1,850.05	-545.5	-918.8	744.4	0.00	0.00	0.00
7,800.0	90.00	180.61	6,431.7	-1,850.04	-645.5	-919.9	841.9	0.00	0.00	0.00
7,900.0	90.00	180.61	6,431.7	-1,850.04	-745.5	-921.0	939.4	0.00	0.00	0.00
8,000.0	90.00	180.61	6,431.7	-1,850.04	-845.5	-922.0	1,036.9	0.00	0.00	0.00
8,100.0	90.00	180.61	6,431.7	-1,850.04	-945.5	-923.1	1,134.4	0.00	0.00	0.00
8,200.0	90.00	180.61	6,431.7	-1,850.04	-1,045.5	-924.2	1,231.9	0.00	0.00	0.00
8,300.0	90.00	180.61	6,431.7	-1,850.04	-1,145.5	-925.2	1,329.4	0.00	0.00	0.00
8,400.0	90.00	180.61	6,431.7	-1,850.04	-1,245.5	-926.3	1,426.9	0.00	0.00	0.00
8,500.0	90.00	180.61	6,431.7	-1,850.04	-1,345.5	-927.4	1,524.4	0.00	0.00	0.00
8,600.0	90.00	180.61	6,431.7	-1,850.04	-1,445.5	-928.4	1,621.9	0.00	0.00	0.00
8,700.0	90.00	180.61	6,431.7	-1,850.04	-1,545.5	-929.5	1,719.4	0.00	0.00	0.00
8,800.0	90.00	180.61	6,431.7	-1,850.04	-1,645.5	-930.6	1,816.9	0.00	0.00	0.00

Database:	EDM 5000.1 Single User Db	Local Co-ordinate Reference:	Well STATE NORTH PLATTE A11-E14-26HNC
Company:	BONANZA CREEK ENERGY INC.	TVD Reference:	KB-EST @ 4581.7usft
Project:	WELD COUNTY, COLORADO (NAD 83)	MD Reference:	KB-EST @ 4581.7usft
Site:	NW NW SEC. 26 T5N R63W 6th P.M.	North Reference:	True
Well:	STATE NORTH PLATTE A11-E14-26HNC	Survey Calculation Method:	Minimum Curvature
Wellbore:	ORIGINAL WELLBORE		
Design:	PROPOSAL #2		

Planned Survey

MD (usft)	Inc (°)	Azi (°)	TVD (usft)	SS (usft)	+N/-S (usft)	+E/-W (usft)	Vertical Section (usft)	Dogleg Rate (°/100usft)	Build Rate (°/100usft)	Turn Rate (°/100usft)
8,900.0	90.00	180.61	6,431.7	-1,850.04	-1,745.5	-931.6	1,914.4	0.00	0.00	0.00
9,000.0	90.00	180.61	6,431.7	-1,850.04	-1,845.5	-932.7	2,011.9	0.00	0.00	0.00
9,100.0	90.00	180.61	6,431.7	-1,850.03	-1,945.4	-933.8	2,109.4	0.00	0.00	0.00
9,200.0	90.00	180.61	6,431.7	-1,850.03	-2,045.4	-934.8	2,206.9	0.00	0.00	0.00
9,300.0	90.00	180.61	6,431.7	-1,850.03	-2,145.4	-935.9	2,304.4	0.00	0.00	0.00
9,400.0	90.00	180.61	6,431.7	-1,850.03	-2,245.4	-937.0	2,401.9	0.00	0.00	0.00
9,500.0	90.00	180.61	6,431.7	-1,850.03	-2,345.4	-938.0	2,499.4	0.00	0.00	0.00
9,600.0	90.00	180.61	6,431.7	-1,850.03	-2,445.4	-939.1	2,596.8	0.00	0.00	0.00
9,700.0	90.00	180.61	6,431.7	-1,850.03	-2,545.4	-940.2	2,694.3	0.00	0.00	0.00
9,800.0	90.00	180.61	6,431.7	-1,850.03	-2,645.4	-941.2	2,791.8	0.00	0.00	0.00
9,900.0	90.00	180.61	6,431.7	-1,850.02	-2,745.4	-942.3	2,889.3	0.00	0.00	0.00
10,000.0	90.00	180.61	6,431.7	-1,850.02	-2,845.4	-943.4	2,986.8	0.00	0.00	0.00
10,100.0	90.00	180.61	6,431.7	-1,850.02	-2,945.4	-944.4	3,084.3	0.00	0.00	0.00
10,200.0	90.00	180.61	6,431.7	-1,850.02	-3,045.4	-945.5	3,181.8	0.00	0.00	0.00
10,300.0	90.00	180.61	6,431.7	-1,850.02	-3,145.4	-946.6	3,279.3	0.00	0.00	0.00
10,400.0	90.00	180.61	6,431.7	-1,850.02	-3,245.4	-947.6	3,376.8	0.00	0.00	0.00
10,500.0	90.00	180.61	6,431.7	-1,850.01	-3,345.4	-948.7	3,474.3	0.00	0.00	0.00
10,600.0	90.00	180.61	6,431.7	-1,850.01	-3,445.4	-949.8	3,571.8	0.00	0.00	0.00
10,700.0	90.00	180.61	6,431.7	-1,850.01	-3,545.4	-950.8	3,669.3	0.00	0.00	0.00
10,800.0	90.00	180.61	6,431.7	-1,850.01	-3,645.4	-951.9	3,766.8	0.00	0.00	0.00
10,900.0	90.00	180.61	6,431.7	-1,850.01	-3,745.3	-953.0	3,864.3	0.00	0.00	0.00
11,000.0	90.00	180.61	6,431.7	-1,850.00	-3,845.3	-954.0	3,961.8	0.00	0.00	0.00
11,100.0	90.00	180.61	6,431.7	-1,850.00	-3,945.3	-955.1	4,059.3	0.00	0.00	0.00
BHL: 470ft FSL & 338ft FWL of Sec 26										
11,147.0	90.00	180.61	6,431.7	-1,850.00	-3,992.3	-955.6	4,105.1	0.00	0.00	0.00

Plan Annotations

MD (usft)	TVD (usft)	Local Coordinates		Comment
		+N/-S (usft)	+E/-W (usft)	
0.0	0.0	0.0	0.0	SHL: 761ft FNL & 1241ft FWL of Sec 26
1,800.0	1,800.0	0.0	0.0	START NUDGE (2°/100ft BUR)
2,864.8	2,840.5	125.2	-150.3	EOB TO 21.3° INC
5,030.2	4,858.0	628.4	-754.7	END OF TANGENT
6,094.9	5,898.4	753.5	-905.0	EOD TO VERTICAL
6,124.9	5,928.4	753.5	-905.0	KOP (12°/100ft BUR)
6,749.9	6,389.6	399.7	-908.8	START OF TANGENT
6,849.9	6,415.5	303.1	-909.8	END OF TANGENT
6,974.9	6,431.7	179.5	-911.1	HZ LP *NEW*: 589ft FNL & 327ft FWL of Sec 26
11,147.0	6,431.7	-3,992.3	-955.6	BHL: 470ft FSL & 338ft FWL of Sec 26