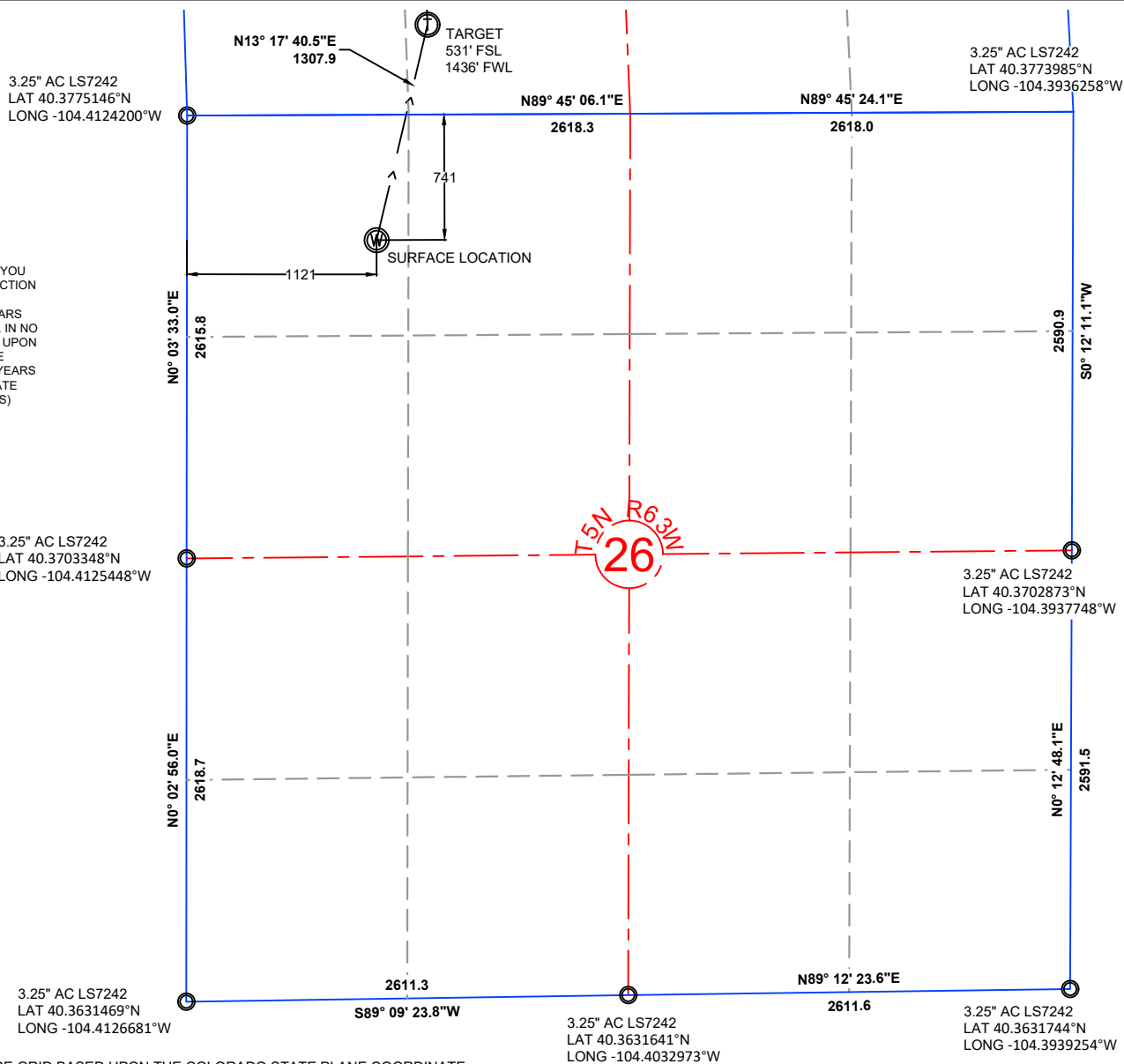


NOTE: UNDER COLORADO LAW, YOU MUST COMMENCE ANY LEGAL ACTION BASED ON ANY DEFECT IN THIS CERTIFICATE WITHIN THREE YEARS AFTER DEFECT IS DISCOVERED. IN NO EVENT MAY ANY ACTION BASED UPON ANY DEFECT IN THIS SURVEY BE COMMENCED MORE THAN TEN YEARS AFTER DATE OF THIS CERTIFICATE SHOWN HEREON. (13-80105 C.R.S.)



#### NOTES:

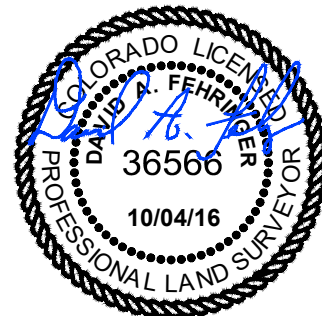
- ALL BEARINGS ARE GRID BASED UPON THE COLORADO STATE PLANE COORDINATE SYSTEM, NORTH ZONE, NAD83(2011) DERIVED FROM POST-PROCESSED STATIC GPS OBSERVATIONS.
- DISTANCES ARE ON GRID
- VERTICAL DATUM IS NAVD88 BASED UPON GPS OBSERVATIONS
- PDOP VALUE EQUALS 1.7.
- GPS OPERATOR: MARC MAYER.
- GROUND ELEVATION AT WELLHEAD = 4562.9'
- ALL SECTION LENGTHS ARE MEASURED DISTANCES UNLESS NOTED BY (R), RECORD BEARING AND DISTANCE.
- NEAREST CULTURAL DISTANCES
  - BUILDINGS: 2905' +/-
  - BUILDING UNIT: 2905' +/-
  - HIGH OCCUPANCY BUILDING UNIT: 5280' +/-
  - DESIGNATED OUTSIDE ACTIVITY AREA: 5280' +/-
  - PUBLIC ROAD: 4627' +/-
  - ABOVE GROUND UTILITY: 336' +/-
  - RAILROAD: 5280' +/-
  - PROPERTY LINE: 741' +/-

4	NAD 83		STATE PLANE COORDINATES	
J-F-23HNB	LATITUDE	LONGITUDE	NORTHING	EASTING
SURFACE	40.3754576	-104.4084333	1381491.50	3304115.02
TARGET 1	40.3789411	-104.4072975	1382764.34	3304415.78
BOTTOM HOLE	40.3907504	-104.4076853	1387064.74	3304254.77

PAD CORNERS	NAD 83	
SNP F-26 PAD	LATITUDE	LONGITUDE
NW	40.3760119	-104.4089980
NE	40.3760002	-104.4077522
SE	40.3759467	-104.4074197
SW	40.3748991	-104.4074366
SW	40.3749140	-104.4090157

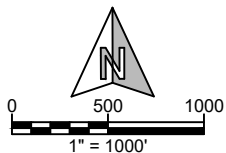
#### CERTIFICATE OF SURVEYOR:

I, DAVID A. FEHRINGER OF LANDER, WYOMING HEREBY CERTIFY THAT THIS WELL LOCATION CERTIFICATE WAS PREPARED FROM NOTES TAKEN DURING AN ACTUAL SURVEY ON SEPTEMBER 07, 2016; AND THAT IT CORRECTLY SHOWS THE DRILLING LOCATION OF BONANZA CREEK ENERGY, INC. NORTH PLATTE J-F-23HNB AS STAKED DURING SAID SURVEY. THIS MAP DOES NOT REPRESENT A BOUNDARY SURVEY OR AN IMPROVEMENT LOCATION PLAT AND SHOULD NOT BE USED FOR THE ESTABLISHMENT OF BOUNDARY LINES.



**WILLIAM H. SMITH & ASSOCIATES, Inc.**  
155 N. 1st Street  
Lander, WY 82520  
Phone: 307-335-5646

Drawn By: MAM  
Job No.: 15043  
Checked By: DAF  
Date: 10/04/16  
Revision:



IF BAR LENGTH DOES NOT EQUAL 1"(ONE INCH), THIS PAGE WAS NOT PLOTTED TO THE INTENDED SCALE.

#### LOCATION CERTIFICATE

**NORTH PLATTE**  
**J-F-23HNB**  
**SURFACE**  
NW¼ NW¼, SECTION 26,  
T.5N., R.63W., 6th PM  
WELD COUNTY, COLORADO

**BONANZA CREEK**  
410 17th Street  
Denver, CO 80202  
(720) 440-6100

SHEET  
1  
OF  
2

3" AC LS4845  
LAT 40.3920612°N  
LONG -104.4127538°W

N89° 36' 08.0"E

N89° 53' 50.0"E

3.25" AC LS7242  
LAT 40.3919489°N  
LONG -104.394386°W

NOTE: UNDER COLORADO LAW, YOU  
MUST COMMENCE ANY LEGAL ACTION  
BASED ON ANY DEFECT IN THIS  
CERTIFICATE WITHIN THREE YEARS  
AFTER DEFECT IS DISCOVERED. IN NO  
EVENT MAY ANY ACTION BASED UPON  
ANY DEFECT IN THIS SURVEY BE  
COMMENCED MORE THAN TEN YEARS  
AFTER DATE OF THIS CERTIFICATE  
SHOWN HEREON. (13-80105 C.R.S.)

3.25" AC LS7242  
LAT 40.3847889°N  
LONG -104.4125871°W

3.25" AC LS7242  
LAT 40.3775146°N  
LONG -104.4124200°W

3.25" AC LS7242  
LAT 40.3773985°N  
LONG -104.3936258°W

#### NOTES:

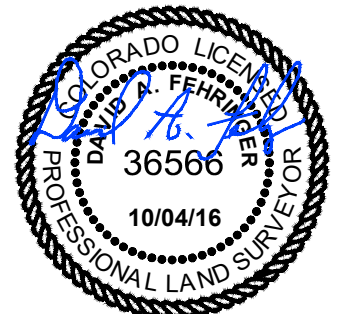
- ALL BEARINGS ARE GRID BASED UPON THE COLORADO STATE PLANE COORDINATE SYSTEM, NORTH ZONE, NAD83(2011) DERIVED FROM POST-PROCESSED STATIC GPS OBSERVATIONS.
- DISTANCES ARE ON GRID
- VERTICAL DATUM IS NAVD88 BASED UPON GPS OBSERVATIONS
- PDOP VALUE EQUALS 1.7.
- GPS OPERATOR: MARC MAYER.
- GROUND ELEVATION AT WELLHEAD = 4562.9'
- ALL SECTION LENGTHS ARE MEASURED DISTANCES UNLESS NOTED BY (R), RECORD BEARING AND DISTANCE.
- NEAREST CULTURAL DISTANCES  
BUILDINGS: 2905' +/-  
BUILDING UNIT: 2905' +/-  
HIGH OCCUPANCY BUILDING UNIT: 5280'+  
DESIGNATED OUTSIDE ACTIVITY AREA: 5280'+  
PUBLIC ROAD: 4627'+  
ABOVE GROUND UTILITY: 336' +/-  
RAILROAD: 5280'+  
PROPERTY LINE: 741' +/-

4	NAD 83		STATE PLANE COORDINATES	
J-F-23HNB	LATITUDE	LONGITUDE	NORTHING	EASTING
SURFACE	40.3754576	-104.4084333	1381491.50	3304115.02
TARGET 1	40.3789411	-104.4072975	1382764.34	3304415.78
BOTTOM HOLE	40.3907504	-104.4076853	1387064.74	3304254.77

PAD CORNERS	NAD 83	
SNP F-26 PAD	LATITUDE	LONGITUDE
NW	40.3760119	-104.4089980
NE	40.3760002	-104.4077522
SE	40.3759467	-104.4074197
SW	40.3748991	-104.4074366
SW	40.3749140	-104.4090157

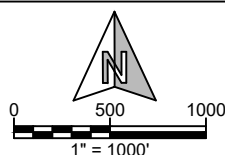
#### CERTIFICATE OF SURVEYOR:

I, DAVID A. FEHRINGER OF LANDER, WYOMING HEREBY CERTIFY THAT THIS WELL LOCATION CERTIFICATE WAS PREPARED FROM NOTES TAKEN DURING AN ACTUAL SURVEY ON SEPTEMBER 07, 2016; AND THAT IT CORRECTLY SHOWS THE DRILLING LOCATION OF BONANZA CREEK ENERGY, INC. NORTH PLATTE J-F-23HNB AS STAKED DURING SAID SURVEY. THIS MAP DOES NOT REPRESENT A BOUNDARY SURVEY OR AN IMPROVEMENT LOCATION PLAT AND SHOULD NOT BE USED FOR THE ESTABLISHMENT OF BOUNDARY LINES.



**WILLIAM H. SMITH &  
ASSOCIATES, Inc.**  
155 N. 1st Street  
Lander, WY 82520  
Phone: 307-335-5646

Drawn By: MAM  
Job No.: 15043  
Checked By: DAF  
Date: 10/04/16  
Revision:



IF BAR LENGTH DOES NOT EQUAL  
1"(ONE INCH), THIS PAGE WAS NOT  
PLOTTED TO THE INTENDED SCALE.

#### LOCATION CERTIFICATE

**NORTH PLATTE  
J-F-23HNB  
BOTTOM HOLE**  
NE¼ NW¼, SECTION 23,  
T.5N., R.63W., 6th PM  
WELD COUNTY, COLORADO



410 17th Street  
Denver, CO 80202  
(720) 440-6100

SHEET  
2  
OF  
2