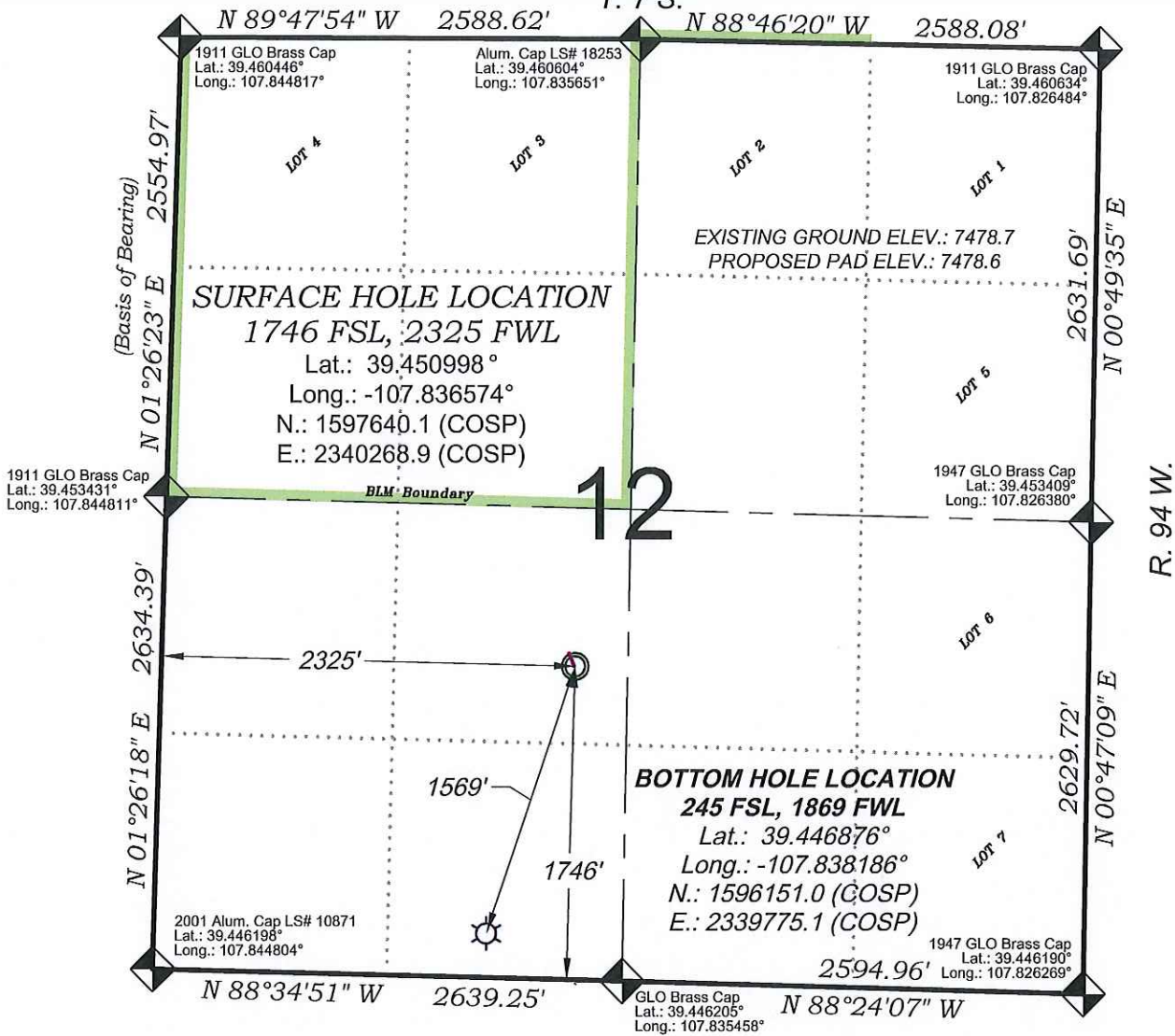
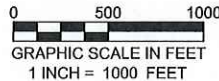


# Ware SR 524-12

T. 7 S.



THERE ARE NO VISIBLE IMPROVEMENTS WITHIN 500' OF THIS LOCATION



## SURVEYORS STATEMENT

I, MICHAEL J. LANGHORNE, A REGISTERED LAND SURVEYOR IN THE STATE OF COLORADO DO HEREBY CERTIFY THAT THE SURVEY SHOWN HEREON WAS PREPARED UNDER MY DIRECT SUPERVISION AND HAS BEEN STAKED ON THE GROUND AS SHOWN ON THE PLAT AND CHECKING THAT THIS MAP IS A TRUE REPRESENTATION THEREOF.

*Michael J. Langhorne*

MICHAEL J. LANGHORNE, COLORADO REGISTRATION NO. 36572  
FOR AND ON BEHALF OF  
BOOKCLIFF SURVEY SERVICES, INC.

## REFERENCES

- 1) 1913 EXTENSION SURVEY T. 7 S., R. 94 W., 6th P.M (GLO PLAT)
- 2) U.S.G.S. QUAD: NORTH MAMM PEAK, CO

136 East Third Street  
Rifle, Colorado  
81650 Ph. (970)  
625-2720 Fax (970)  
625-2773

**BOOKCLIFF**  
Survey Services, Inc.

SURVEY DATE: 4/21/16  
MAP DATE: 9/16/16  
SCALE: 1" = 1000'  
PLAT: 1 of 1  
PROJECT: TEP Valley

## NOTES

- 1) ELEVATIONS BASED ON N.A.V.D. 1988 PUBLISHED COORDINATES.
- 2) LATITUDES AND LONGITUDES ARE BASE ON NAD 83, PUBLISHED COORDINATES
- 3) STATE PLANE COORDINATES ARE BASED ON COLORADO CENTRAL ZONE, U.S. SURVEY FEET.
- 4) ELEVATION MASK SET TO 15"
- 5) GPS OPERATOR J. KIRKPATRICK, OBSERVED A PDOP 2.8 ON SURVEY POINT NUMBER 533.
- 6) SURFACE AND BOTTOM HOLE LOCATIONS ARE MEASURED 90° FROM SECTION LINES.

## WELL LOCATION PLAT Prepared for:

**TERRA**  
ENERGY PARTNERS

TEP Rocky Mountain LLC

NE1/4 SW1/4, SECTION 12  
T. 7 S., R. 94 W. of the 6th. P.M.  
GARFIELD COUNTY, COLORADO