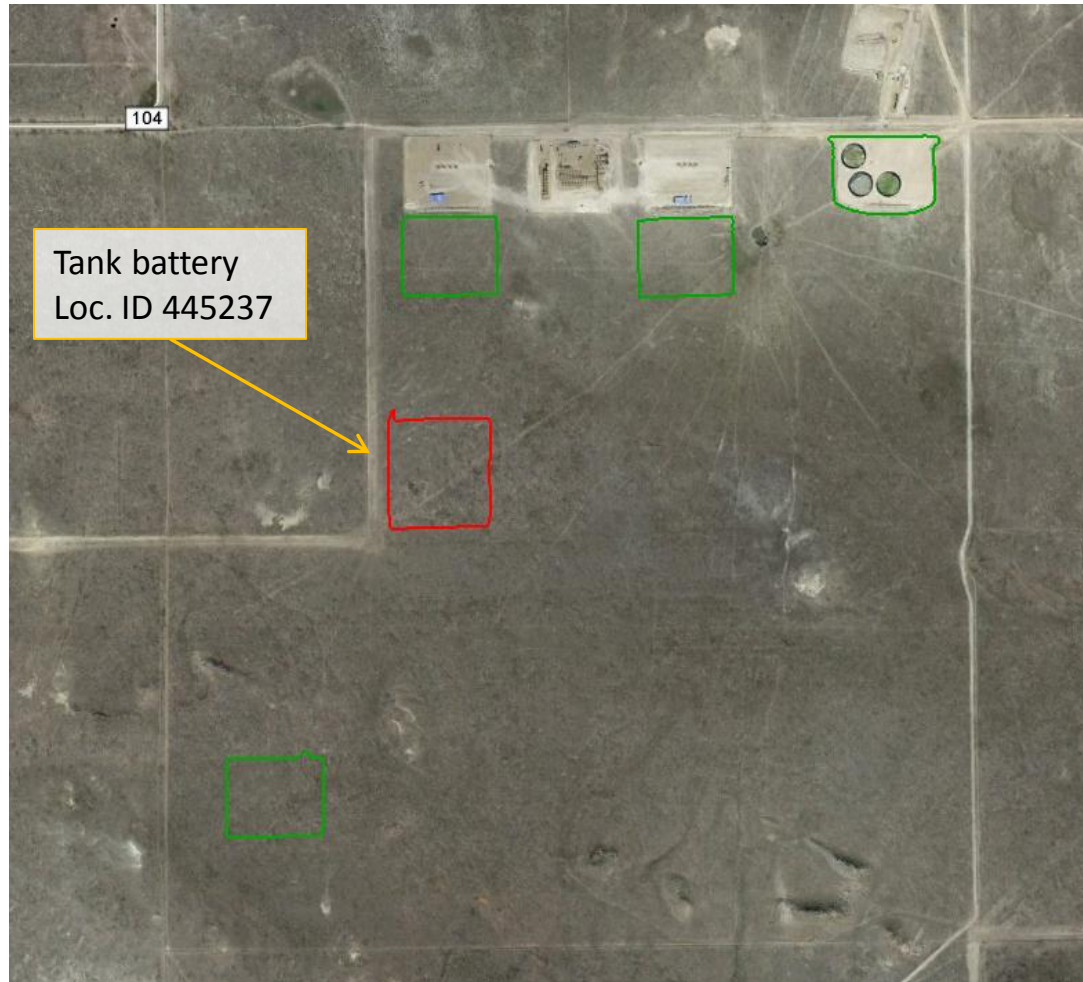


Location Overview



Google Earth aerial photo taken 9/7/2013 of the LC24-6 tank battery location which will service the other 4 well locations highlighted in green. Total area of 10.6 acres was mapped using a Trimble Juno 3B handheld device. Access road was not mapped to include total disturbance acreage. Perimeter of location was mapped and highlighted in red.

Stormwater Inspection



Photo 1. Photo taken from the southwest corner of location, facing North. Based on documentation, topsoil has been stored along the entire perimeter of the location. Tackifier has been applied to the topsoil but areas need additional tackifier because the application rate was too low- see Photos 3 & 4. Also, need to install sufficient stormwater BMPs for the location.

Stormwater Inspection



Photo 2. Photo taken from the southwest corner of location, facing East. Based on documentation, topsoil has been stored along the entire perimeter of the location. Tackifier has been applied to the topsoil but areas need additional tackifier because the application rate was too low- see Photos 3 & 4. Need to protect topsoil as it appears vehicle traffic is damaging the highlighted area. Also, need to install sufficient stormwater BMPs for the location.

Stormwater Inspection



Photo 3. Photo taken from the southeast corner of location, facing West. Based on documentation, topsoil has been stored along the entire perimeter of the location. Tackifier has started to lose its stabilization capability. Need additional tackifier along this area. Also, need to install sufficient stormwater BMPs for the location.

Stormwater Inspection



Photo 4. Photo taken from the southeast corner of location, facing North. Based on documentation, topsoil has been stored along the entire perimeter of the location. Tackifier has started to lose its stabilization capability. Need additional tackifier along this area. Also, need to install sufficient stormwater BMPs for the location.

Stormwater Inspection



Photo 5. Photo taken from the northeast corner of location, facing South. Based on documentation, topsoil has been stored along the entire perimeter of the location. Tackifier has been applied to the topsoil but areas need additional tackifier because the application rate was too low- see Photos 3 & 4. Also, need to install sufficient stormwater BMPs for the location.

Stormwater Inspection

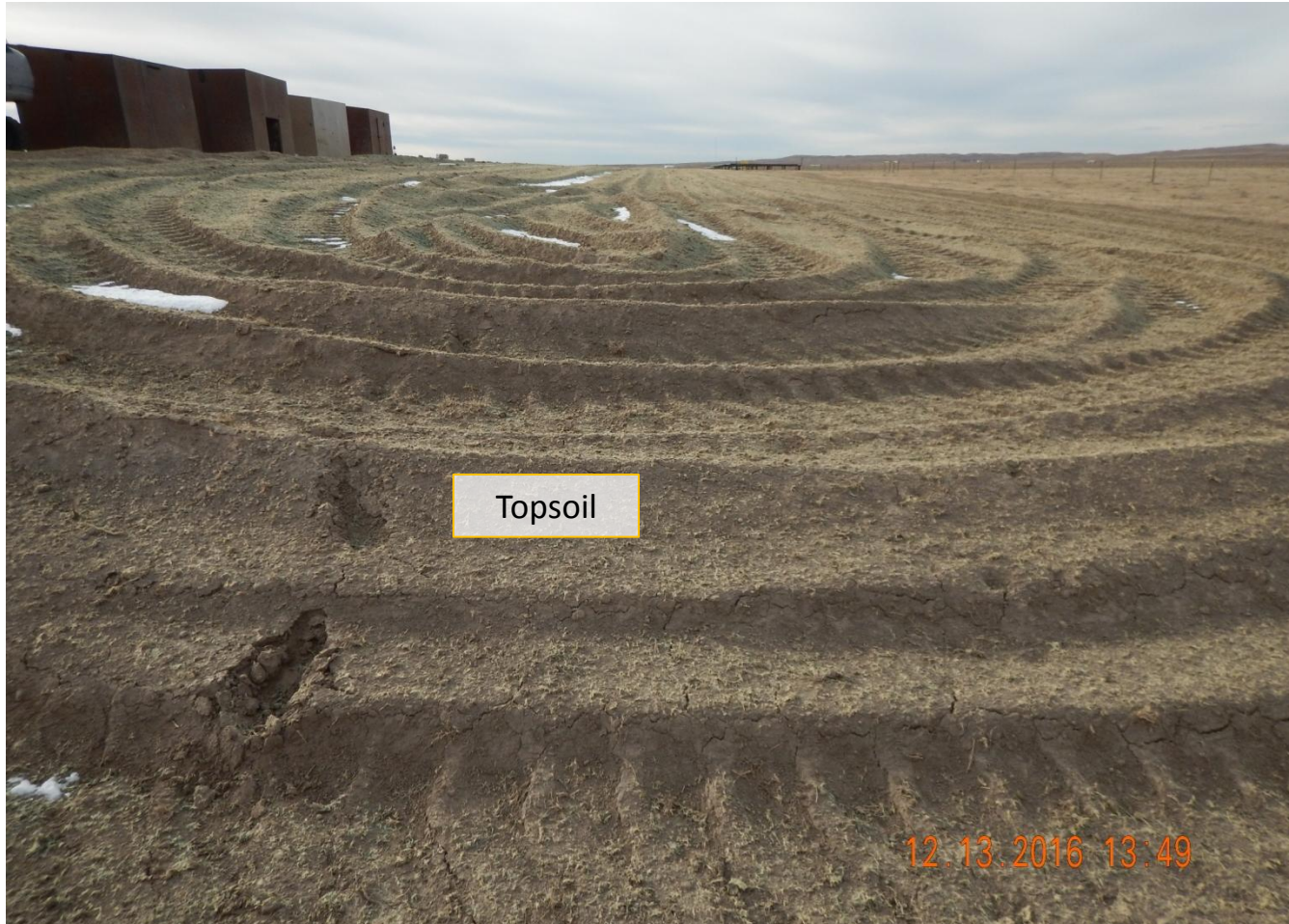


Photo 6. Photo taken from the northeast corner of location, facing West. Based on documentation, topsoil has been stored along the entire perimeter of the location. Tackifier has been applied to the topsoil but areas need additional tackifier because the application rate was too low- see Photos 3 & 4. Also, need to install sufficient stormwater BMPs for the location.

Stormwater Inspection



Photo 7. Photo taken from the northern corner of location, facing West. Based on documentation, topsoil has been stored along the entire perimeter of the location. Tackifier has been applied to the topsoil but areas need additional tackifier because the application rate was too low- see Photos 3 & 4. Also, need to install sufficient stormwater BMPs for the location.

Stormwater Inspection



Photo 8. Photo taken from the northwest corner of location, facing South. Based on documentation, topsoil has been stored along the entire perimeter of the location. Tackifier has been applied to the topsoil but areas need additional tackifier because the application rate was too low- see Photos 3 & 4. Also, need to install sufficient stormwater BMPs for the location.

Stormwater Inspection



Photo 9. Photo taken from the tank battery entrance, facing North, along the built access road.