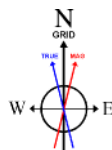


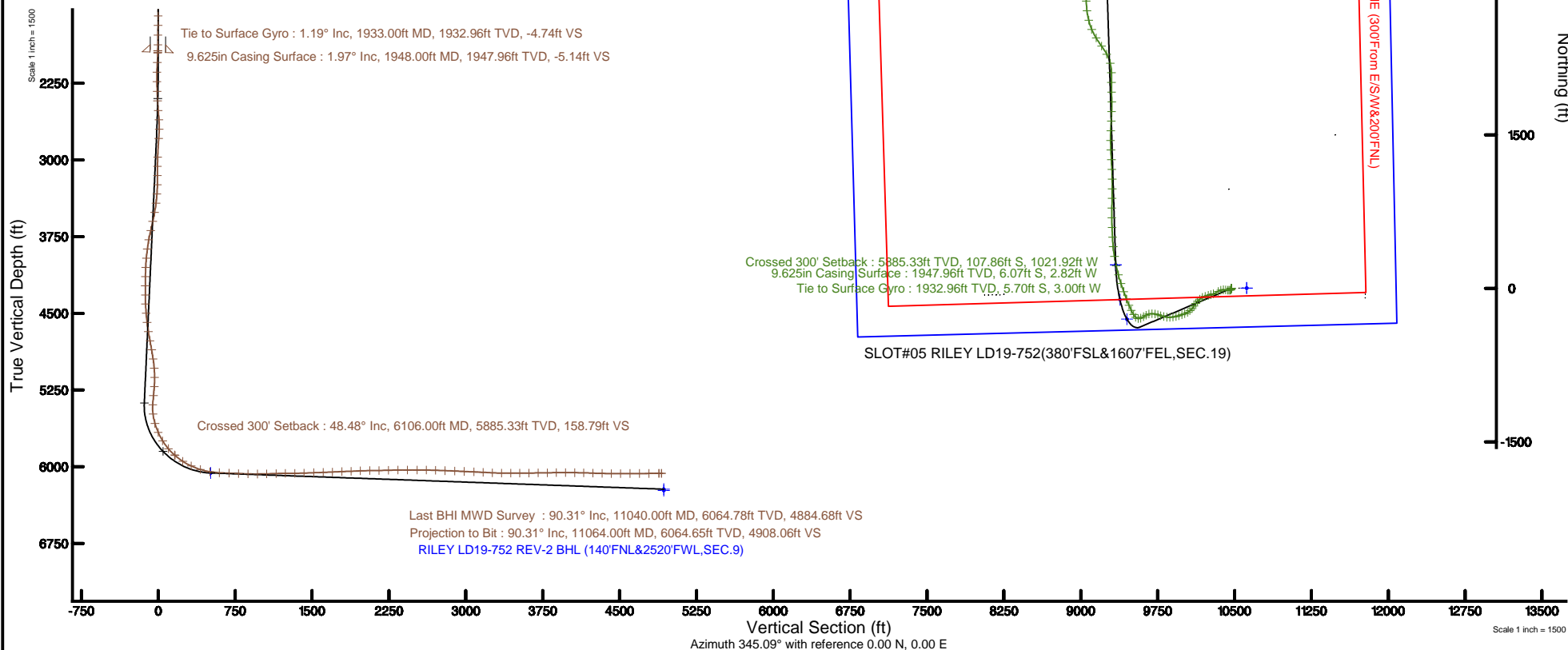
# NOBLE ENERGY, INC

Location: COLORADO Slot: SLOT#05 RILEY LD19-752(380'FSL&1607'FEL,SEC.19)  
 Field: WELD COUNTY (NOBLE NAD 83 GRID) Well: RILEY LD19-752  
 Facility: SEC.19-T09N-R58W Wellbore: RILEY LD19-752 PWB

Plot reference wellpath is RILEY LD19-752 (REV-B.0) PWP	Grid System: NAD83 / Lambert Colorado SP, Northern Zone (501), US feet
True vertical depths are referenced to H&P 524 (30'KB) (RKB)	* = Wellpath was transformed from a different geodetic datum
Measured depths are referenced to H&P 524 (30'KB) (RKB)	North Reference: Grid north
H&P 524 (30'KB) (RKB) to Mean Sea Level: 4850 feet	Scale: True distance
Mean Sea Level to Ground level (At Slot: SLOT#05 RILEY LD19-752(380'FSL&1607'FEL,SEC.19)): 0 feet	Depths are in feet
Coordinates are in feet referenced to Slot	Created by: ingnjannr on 2016-11-07
	Database: WA_DEN_Denver_Defn



BGGM (1900.0 to 2018.0) Dip: 67.31° Field: 52777.6 nT  
 Magnetic North is 7.96 degrees East of True North (at 10/1/2016)  
 Grid North is 1.03 degrees East of True North  
 To correct azimuth from True to Grid subtract 1.03 degrees  
 To correct azimuth from Magnetic to Grid add 6.93 degrees



REFERENCE WELLPATH IDENTIFICATION			
Operator	NOBLE ENERGY, INC	Slot	SLOT#05 RILEY LD19-752(380'FSL&1607'FEL,SEC.19)
Area	COLORADO	Well	RILEY LD19-752
Field	WELD COUNTY (NOBLE NAD 83 GRID)	Wellbore	RILEY LD19-752 AWB
Facility	SEC.19-T09N-R58W		

REPORT SETUP INFORMATION			
Projection System	NAD83 / Lambert Colorado SP, Northern Zone (501), US feet	Software System	WellArchitect® 5.0
North Reference	Grid	User	Ingmjmr
Scale	0.999992	Report Generated	11/7/2016 at 9:01:23 AM
Convergence at slot	1.04° East	Database/Source file	WA_DEN_Denver_Defn/RILEY_LD19-752_AWP.xml

WELLPATH LOCATION						
	Local coordinates		Grid coordinates		Geographic coordinates	
	North[ft]	East[ft]	Easting[US ft]	Northing[US ft]	Latitude	Longitude
Slot Location	-2.70	-149.64	3442476.69	1512857.96	40°43'48.900"N	103°54'12.276"W
Facility Reference Pt			3442626.33	1512860.65	40°43'48.900"N	103°54'10.332"W
Field Reference Pt			3000000.00	4454105.15	48°46'34.315"N	105°30'00.000"W

WELLPATH DATUM			
Calculation method	Minimum curvature	H&P 524 (30'KB) (RKB) to Facility Vertical Datum	4850.00ft
Horizontal Reference Pt	Slot	H&P 524 (30'KB) (RKB) to Mean Sea Level	4850.00ft
Vertical Reference Pt	H&P 524 (30'KB) (RKB)	H&P 524 (30'KB) (RKB) to Ground Level at Slot (SLOT#05 RILEY LD19-752 (380'FSL&1607'FEL,SEC.19))	4850.00ft
MD Reference Pt	H&P 524 (30'KB) (RKB)	Section Origin	N 0.00, E 0.00 ft
Field Vertical Reference	Mean Sea Level	Section Azimuth	345.09°

### REFERENCE WELLPATH IDENTIFICATION

Operator	NOBLE ENERGY, INC	Slot	SLOT#05 RILEY LD19-752(380'FSL&1607'FEL,SEC.19)
Area	COLORADO	Well	RILEY LD19-752
Field	WELD COUNTY (NOBLE NAD 83 GRID)	Wellbore	RILEY LD19-752 AWP
Facility	SEC.19-T09N-R58W		

### WELLPATH DATA (99 stations)

MD [ft]	Inclination [°]	Azimuth [°]	TVD [ft]	Vert Sect [ft]	North [ft]	East [ft]	Latitude	Longitude	DLS [°/100ft]	Comments
1933.00	1.190	161.540	1932.96	-4.74	-5.70	-3.00	40°43'48.844"N	103°54'12.316"W	0.56	Tie to Surface Gyro
1954.00	2.290	147.190	1953.95	-5.36	-6.26	-2.70	40°43'48.839"N	103°54'12.313"W	5.59	
2048.00	3.340	188.930	2047.85	-9.65	-10.55	-2.11	40°43'48.796"N	103°54'12.306"W	2.37	
2142.00	3.690	236.730	2141.69	-13.11	-14.91	-5.07	40°43'48.754"N	103°54'12.345"W	3.05	
2237.00	5.370	263.690	2236.40	-13.40	-17.08	-12.04	40°43'48.733"N	103°54'12.436"W	2.81	
2332.00	7.360	268.830	2330.81	-11.29	-17.69	-22.54	40°43'48.729"N	103°54'12.573"W	2.18	
2426.00	9.630	274.550	2423.77	-7.24	-17.19	-36.40	40°43'48.737"N	103°54'12.753"W	2.57	
2521.00	12.780	276.820	2516.95	-0.70	-15.31	-54.76	40°43'48.758"N	103°54'12.991"W	3.35	
2616.00	15.390	271.160	2609.09	6.68	-13.81	-77.80	40°43'48.777"N	103°54'13.290"W	3.10	
2710.00	17.080	249.810	2699.42	8.87	-18.33	-103.25	40°43'48.737"N	103°54'13.621"W	6.56	
2805.00	16.350	240.440	2790.42	4.20	-29.74	-127.98	40°43'48.629"N	103°54'13.945"W	2.94	
2994.00	15.540	247.620	2972.17	-5.81	-52.50	-174.54	40°43'48.412"N	103°54'14.555"W	1.13	
3088.00	16.410	252.350	3062.54	-8.08	-61.33	-198.84	40°43'48.329"N	103°54'14.873"W	1.66	
3183.00	17.830	256.230	3153.33	-8.43	-68.86	-225.75	40°43'48.260"N	103°54'15.224"W	1.92	
3278.00	18.660	252.050	3243.56	-8.95	-77.00	-254.34	40°43'48.184"N	103°54'15.597"W	1.63	
3372.00	18.700	242.130	3332.63	-13.12	-88.68	-281.97	40°43'48.074"N	103°54'15.959"W	3.38	
3467.00	18.600	232.620	3422.66	-22.33	-105.01	-307.48	40°43'47.917"N	103°54'16.294"W	3.20	
3562.00	18.740	222.670	3512.69	-36.30	-125.43	-329.87	40°43'47.719"N	103°54'16.589"W	3.35	
3656.00	18.610	213.270	3601.76	-54.40	-149.08	-348.34	40°43'47.489"N	103°54'16.835"W	3.20	
3750.00	18.500	213.940	3690.87	-74.22	-173.99	-364.89	40°43'47.246"N	103°54'17.055"W	0.26	
3845.00	18.230	220.450	3781.04	-92.58	-197.80	-382.95	40°43'47.014"N	103°54'17.296"W	2.18	
3940.00	17.620	230.160	3871.45	-107.09	-218.33	-403.63	40°43'46.815"N	103°54'17.569"W	3.21	
4034.00	17.950	240.490	3960.98	-116.74	-234.58	-427.17	40°43'46.658"N	103°54'17.878"W	3.37	
4129.00	18.500	247.510	4051.23	-122.41	-247.56	-453.84	40°43'46.535"N	103°54'18.228"W	2.38	
4223.00	18.860	251.150	4140.28	-125.42	-258.17	-482.00	40°43'46.435"N	103°54'18.596"W	1.30	
4318.00	19.060	253.600	4230.13	-126.88	-267.51	-511.41	40°43'46.348"N	103°54'18.980"W	0.86	
4413.00	18.180	257.020	4320.16	-126.78	-275.22	-540.73	40°43'46.277"N	103°54'19.363"W	1.48	
4507.00	18.120	262.480	4409.48	-124.40	-280.43	-569.52	40°43'46.231"N	103°54'19.738"W	1.81	
4601.00	18.940	268.090	4498.62	-119.09	-282.85	-599.26	40°43'46.212"N	103°54'20.125"W	2.09	
4696.00	18.380	277.160	4588.64	-109.99	-281.50	-629.53	40°43'46.231"N	103°54'20.517"W	3.11	

REFERENCE WELLPATH IDENTIFICATION			
Operator	NOBLE ENERGY, INC	Slot	SLOT#05 RILEY LD19-752(380'FSL&1607'FEL,SEC.19)
Area	COLORADO	Well	RILEY LD19-752
Field	WELD COUNTY (NOBLE NAD 83 GRID)	Wellbore	RILEY LD19-752 AWB
Facility	SEC.19-T09N-R58W		

WELLPATH DATA (99 stations) † = interpolated/extrapolated station										
MD [ft]	Inclination [°]	Azimuth [°]	TVD [ft]	Vert Sect [ft]	North [ft]	East [ft]	Latitude	Longitude	DLS [°/100ft]	Comments
4790.00	18.940	284.100	4677.71	-97.02	-275.93	-659.04	40°43'46.291"N	103°54'20.899"W	2.43	
4885.00	18.780	288.290	4767.62	-81.17	-267.38	-688.51	40°43'46.381"N	103°54'21.280"W	1.44	
4979.00	17.740	288.780	4856.88	-64.93	-258.02	-716.44	40°43'46.478"N	103°54'21.641"W	1.12	
5073.00	18.490	281.240	4946.23	-50.42	-250.50	-744.62	40°43'46.558"N	103°54'22.005"W	2.62	
5168.00	18.510	269.990	5036.35	-39.90	-247.57	-774.48	40°43'46.592"N	103°54'22.392"W	3.75	
5262.00	18.580	255.960	5125.52	-35.83	-251.21	-803.95	40°43'46.561"N	103°54'22.775"W	4.74	
5357.00	18.400	241.570	5215.66	-39.10	-262.02	-831.83	40°43'46.459"N	103°54'23.140"W	4.80	
5451.00	18.250	237.720	5304.90	-46.96	-276.95	-857.32	40°43'46.316"N	103°54'23.475"W	1.30	
5546.00	17.860	243.480	5395.23	-54.33	-291.40	-882.94	40°43'46.178"N	103°54'23.811"W	1.92	
5640.00	16.880	279.290	5485.19	-51.63	-295.64	-909.38	40°43'46.141"N	103°54'24.155"W	11.25	
5735.00	18.690	316.920	5575.94	-32.49	-282.25	-933.46	40°43'46.277"N	103°54'24.465"W	12.04	
5829.00	23.860	327.620	5663.54	-1.05	-255.17	-953.95	40°43'46.549"N	103°54'24.725"W	6.86	
5924.00	32.810	332.750	5747.08	42.52	-215.97	-976.08	40°43'46.940"N	103°54'25.003"W	9.76	
6019.00	40.440	337.620	5823.29	98.31	-164.52	-999.63	40°43'47.452"N	103°54'25.297"W	8.59	
6106.00†	48.482	339.313	5885.33	158.79	-107.86	-1021.92	40°43'48.016"N	103°54'25.573"W	9.34	Crossed 300' Setback
6113.00	49.130	339.430	5889.94	164.03	-102.93	-1023.78	40°43'48.065"N	103°54'25.596"W	9.34	
6208.00	57.240	340.260	5946.82	239.71	-31.58	-1049.93	40°43'48.775"N	103°54'25.919"W	8.57	
6302.00	65.150	341.690	5992.08	321.80	46.24	-1076.72	40°43'49.548"N	103°54'26.249"W	8.52	
6397.00	72.390	345.170	6026.47	410.24	131.06	-1101.89	40°43'50.391"N	103°54'26.556"W	8.35	
6492.00	80.500	348.470	6048.72	502.46	220.90	-1122.88	40°43'51.282"N	103°54'26.807"W	9.18	
6586.00	87.630	350.290	6058.44	595.63	312.73	-1140.09	40°43'52.192"N	103°54'27.009"W	7.83	
6681.00	87.660	354.540	6062.34	689.75	406.80	-1152.62	40°43'53.124"N	103°54'27.150"W	4.47	
6775.00	87.780	357.120	6066.08	782.02	500.47	-1159.45	40°43'54.050"N	103°54'27.217"W	2.75	
6870.00	87.970	357.220	6069.60	874.85	595.29	-1164.14	40°43'54.988"N	103°54'27.256"W	0.23	
6964.00	90.740	359.790	6070.66	966.26	689.23	-1166.59	40°43'55.917"N	103°54'27.266"W	4.02	
7059.00	91.570	1.340	6068.75	1057.80	784.21	-1165.65	40°43'56.855"N	103°54'27.231"W	1.85	
7154.00	91.660	1.180	6066.07	1149.00	879.14	-1163.56	40°43'57.792"N	103°54'27.182"W	0.19	
7248.00	90.430	0.310	6064.36	1239.49	973.12	-1162.34	40°43'58.720"N	103°54'27.144"W	1.60	
7343.00	90.400	359.420	6063.67	1331.35	1068.11	-1162.56	40°43'59.659"N	103°54'27.125"W	0.94	
7437.00	91.880	357.280	6061.80	1422.81	1162.05	-1165.27	40°44'00.587"N	103°54'27.138"W	2.77	

### REFERENCE WELLPATH IDENTIFICATION

Operator	NOBLE ENERGY, INC	Slot	SLOT#05 RILEY LD19-752(380'FSL&1607'FEL,SEC.19)
Area	COLORADO	Well	RILEY LD19-752
Field	WELD COUNTY (NOBLE NAD 83 GRID)	Wellbore	RILEY LD19-752 AWB
Facility	SEC.19-T09N-R58W		

### WELLPATH DATA (99 stations)

MD [ft]	Inclination [°]	Azimuth [°]	TVD [ft]	Vert Sect [ft]	North [ft]	East [ft]	Latitude	Longitude	DLS [°/100ft]	Comments
7532.00	92.310	357.140	6058.32	1515.63	1256.87	-1169.89	40°44'01.525"N	103°54'27.176"W	0.48	
7627.00	92.190	356.860	6054.59	1608.51	1351.67	-1174.86	40°44'02.463"N	103°54'27.219"W	0.32	
7721.00	92.190	359.130	6051.00	1700.06	1445.54	-1178.15	40°44'03.390"N	103°54'27.239"W	2.41	
7816.00	92.370	3.260	6047.22	1791.24	1540.42	-1176.17	40°44'04.327"N	103°54'27.192"W	4.35	
7911.00	92.060	2.340	6043.55	1881.67	1635.23	-1171.53	40°44'05.263"N	103°54'27.109"W	1.02	
8005.00	92.220	2.210	6040.04	1971.41	1729.10	-1167.80	40°44'06.190"N	103°54'27.039"W	0.22	
8100.00	90.770	359.450	6037.56	2062.80	1824.04	-1166.43	40°44'07.128"N	103°54'26.999"W	3.28	
8194.00	90.770	358.180	6036.30	2154.11	1918.01	-1168.37	40°44'08.057"N	103°54'27.002"W	1.35	
8289.00	91.660	0.420	6034.28	2246.17	2012.98	-1169.53	40°44'08.995"N	103°54'26.995"W	2.54	
8384.00	90.680	359.540	6032.34	2337.96	2107.95	-1169.56	40°44'09.933"N	103°54'26.973"W	1.39	
8478.00	90.400	346.110	6031.45	2430.88	2201.00	-1181.28	40°44'10.855"N	103°54'27.104"W	14.29	
8573.00	89.510	330.940	6031.53	2524.98	2289.15	-1215.95	40°44'11.732"N	103°54'27.534"W	16.00	
8667.00	89.450	324.100	6032.38	2614.54	2368.39	-1266.40	40°44'12.523"N	103°54'28.170"W	7.28	
8762.00	87.810	328.600	6034.65	2704.46	2447.43	-1319.01	40°44'13.314"N	103°54'28.835"W	5.04	
8857.00	88.460	337.340	6037.75	2797.20	2531.92	-1362.12	40°44'14.156"N	103°54'29.375"W	9.22	
8951.00	87.290	346.410	6041.24	2890.89	2621.10	-1391.31	40°44'15.042"N	103°54'29.734"W	9.72	
9046.00	87.440	352.990	6045.62	2985.43	2714.42	-1408.27	40°44'15.967"N	103°54'29.932"W	6.92	
9141.00	87.200	358.560	6050.06	3078.64	2809.02	-1415.26	40°44'16.903"N	103°54'30.001"W	5.86	
9236.00	87.440	2.700	6054.51	3170.05	2903.89	-1414.22	40°44'17.840"N	103°54'29.965"W	4.36	
9330.00	87.140	3.900	6058.95	3259.24	2997.63	-1408.81	40°44'18.765"N	103°54'29.873"W	1.31	
9425.00	89.880	4.680	6061.42	3348.91	3092.32	-1401.71	40°44'19.699"N	103°54'29.759"W	3.00	
9520.00	89.750	4.360	6061.73	3438.50	3187.02	-1394.22	40°44'20.634"N	103°54'29.640"W	0.36	
9614.00	90.060	4.140	6061.88	3527.29	3280.76	-1387.26	40°44'21.559"N	103°54'29.527"W	0.40	
9709.00	90.580	4.290	6061.35	3617.04	3375.51	-1380.27	40°44'22.493"N	103°54'29.415"W	0.57	
9804.00	90.800	3.970	6060.21	3706.83	3470.25	-1373.43	40°44'23.428"N	103°54'29.304"W	0.41	
9899.00	90.830	6.550	6058.86	3795.99	3564.83	-1364.73	40°44'24.361"N	103°54'29.168"W	2.72	
9993.00	90.800	6.280	6057.52	3883.54	3658.24	-1354.22	40°44'25.282"N	103°54'29.010"W	0.29	
10088.00	89.570	3.970	6057.21	3972.78	3752.85	-1345.74	40°44'26.215"N	103°54'28.878"W	2.75	
10183.00	89.720	4.530	6057.80	4062.51	3847.58	-1338.70	40°44'27.150"N	103°54'28.764"W	0.61	
10277.00	88.550	4.380	6059.22	4151.18	3941.29	-1331.40	40°44'28.074"N	103°54'28.648"W	1.25	

### REFERENCE WELLPATH IDENTIFICATION

Operator	NOBLE ENERGY, INC	Slot	SLOT#05 RILEY LD19-752(380'FSL&1607'FEL,SEC.19)
Area	COLORADO	Well	RILEY LD19-752
Field	WELD COUNTY (NOBLE NAD 83 GRID)	Wellbore	RILEY LD19-752 AWB
Facility	SEC.19-T09N-R58W		

### WELLPATH DATA (99 stations)

MD [ft]	Inclination [°]	Azimuth [°]	TVD [ft]	Vert Sect [ft]	North [ft]	East [ft]	Latitude	Longitude	DLS [°/100ft]	Comments
10371.00	87.720	3.830	6062.28	4240.00	4035.00	-1324.67	40°44'28.999"N	103°54'28.539"W	1.06	
10466.00	88.920	4.590	6065.07	4329.72	4129.70	-1317.70	40°44'29.933"N	103°54'28.426"W	1.49	
10560.00	89.850	2.700	6066.07	4418.82	4223.50	-1311.73	40°44'30.859"N	103°54'28.326"W	2.24	
10655.00	90.180	359.150	6066.05	4510.20	4318.47	-1310.19	40°44'31.797"N	103°54'28.284"W	3.75	
10750.00	90.030	357.170	6065.88	4602.73	4413.41	-1313.24	40°44'32.735"N	103°54'28.302"W	2.09	
10844.00	89.880	358.360	6065.95	4694.44	4507.34	-1316.91	40°44'33.664"N	103°54'28.328"W	1.28	
10939.00	90.580	359.780	6065.57	4786.62	4602.32	-1318.45	40°44'34.603"N	103°54'28.325"W	1.67	
11040.00	90.310	358.070	6064.78	4884.68	4703.30	-1320.35	40°44'35.601"N	103°54'28.326"W	1.71	Last BHI MWD Survey
11064.00	90.310	358.070	6064.65	4908.06	4727.29	-1321.15	40°44'35.838"N	103°54'28.331"W	0.00	Projection to Bit

### HOLE & CASING SECTIONS - Ref Wellbore: RILEY LD19-752 AWB Ref Wellpath: RILEY LD19-752 AWP

String/Diameter	Start MD [ft]	End MD [ft]	Interval [ft]	Start TVD [ft]	End TVD [ft]	Start N/S [ft]	Start E/W [ft]	End N/S [ft]	End E/W [ft]
13.5in Open Hole	30.00	1948.00	1918.00	30.00	1947.96	0.03	-0.02	-6.07	-2.82
9.625in Casing Surface	30.00	1948.00	1918.00	30.00	1947.96	0.03	-0.02	-6.07	-2.82
8.5in Open Hole	1948.00	11064.00	9116.00	1947.96	6064.65	-6.07	-2.82	4727.29	-1321.15

REFERENCE WELLPATH IDENTIFICATION			
Operator	NOBLE ENERGY, INC	Slot	SLOT#05 RILEY LD19-752(380'FSL&1607'FEL,SEC.19)
Area	COLORADO	Well	RILEY LD19-752
Field	WELD COUNTY (NOBLE NAD 83 GRID)	Wellbore	RILEY LD19-752 AWB
Facility	SEC.19-T09N-R58W		

TARGETS								
Name	TVD [ft]	North [ft]	East [ft]	Grid East [US ft]	Grid North [US ft]	Latitude	Longitude	Shape
RILEY LD19-715 SECTION 09	0.00	2.68	149.63	3442626.32	1512860.64	40°43'48.900"N	103°54'10.332"W	polygon
RILEY LD19-752 Top of Nio (79'FSL&2625'FEL,SEC.9)	5768.00	-301.44	-1018.11	3441458.59	1512556.52	40°43'46.103"N	103°54'25.568"W	point
RILEY LD19-715 HARDLINE (300'From E/S/W&200'FNL)	5900.00	2.68	149.63	3442626.32	1512860.64	40°43'48.900"N	103°54'10.332"W	polygon
RILEY LD19-752 Cross 300'Hardline (300'FSL&2700'FEL,SEC.9)	5966.41	-110.54	-1086.44	3441390.26	1512747.42	40°43'48.001"N	103°54'26.411"W	point
RILEY LD19-752 LP (REV-2 (609'FSL&2735'FEL,SEC.9)	6060.50	228.62	-1127.99	3441348.71	1513086.57	40°43'51.359"N	103°54'26.872"W	point
RILEY LD19-752 Landing Point (609'FSL&2735'FEL,SEC.9)	6073.50	228.62	-1127.99	3441348.71	1513086.57	40°43'51.359"N	103°54'26.872"W	point
RILEY LD19-752 REV-2 BHL (140'FNL&2520'FWL,SEC.9)	6219.00	4765.30	-1269.23	3441207.47	1517623.21	40°44'36.204"N	103°54'27.648"W	point
RILEY LD19-752 REV-1 BHL (140'FNL&2520'FWL,SEC.9)	6232.00	4765.30	-1269.23	3441207.47	1517623.21	40°44'36.204"N	103°54'27.648"W	point

WELLPATH COMPOSITION - Ref Wellbore: RILEY LD19-752 AWB					Ref Wellpath: RILEY LD19-752 AWP	
Start MD [ft]	End MD [ft]	Positional Uncertainty Model	Log Name/Comment		Wellbore	
0.00	1933.00	Gyrodata standard - Drop gyro or Multi-shot	GYRODATASURVEYS 13.5" HOLE <79-1933>		RILEY LD19-752 AWB	
1933.00	11040.00	OWSG MWD rev2 + IFR1 + Multi-Station Correction	BHI MWD SURVEYS 8.5" HOLE <1954-11040>		RILEY LD19-752 AWB	
11040.00	11064.00	Blind Drilling (std)	Projection to bit		RILEY LD19-752 AWB	





# Actual Wellpath Report

RILEY LD19-752 AWP

Page 7 of 7



## REFERENCE WELLPATH IDENTIFICATION

Operator	NOBLE ENERGY, INC	Slot	SLOT#05 RILEY LD19-752(380'FSL&1607'FEL,SEC.19)
Area	COLORADO	Well	RILEY LD19-752
Field	WELD COUNTY (NOBLE NAD 83 GRID)	Wellbore	RILEY LD19-752 AWB
Facility	SEC.19-T09N-R58W		

## WELLPATH COMMENTS

MD [ft]	Inclination [°]	Azimuth [°]	TVD [ft]	Comment
1933.00	1.190	161.540	1932.96	Tie to Surface Gyro
6106.00	48.482	339.313	5885.33	Crossed 300' Setback
11040.00	90.310	358.070	6064.78	Last BHI MWD Survey
11064.00	90.310	358.070	6064.65	Projection to Bit