



Service and Tool Mnemonics

Mnemonic	Name	Description
ATC_SU	ATC_SU	Auto Trak Curve Steering Unit
ATC_MWD	ATC_MWD	Auto Trak Curve MWD
ATC_LCPM	ATC_LCPM	Auto Trak Curve LCPM

Comments

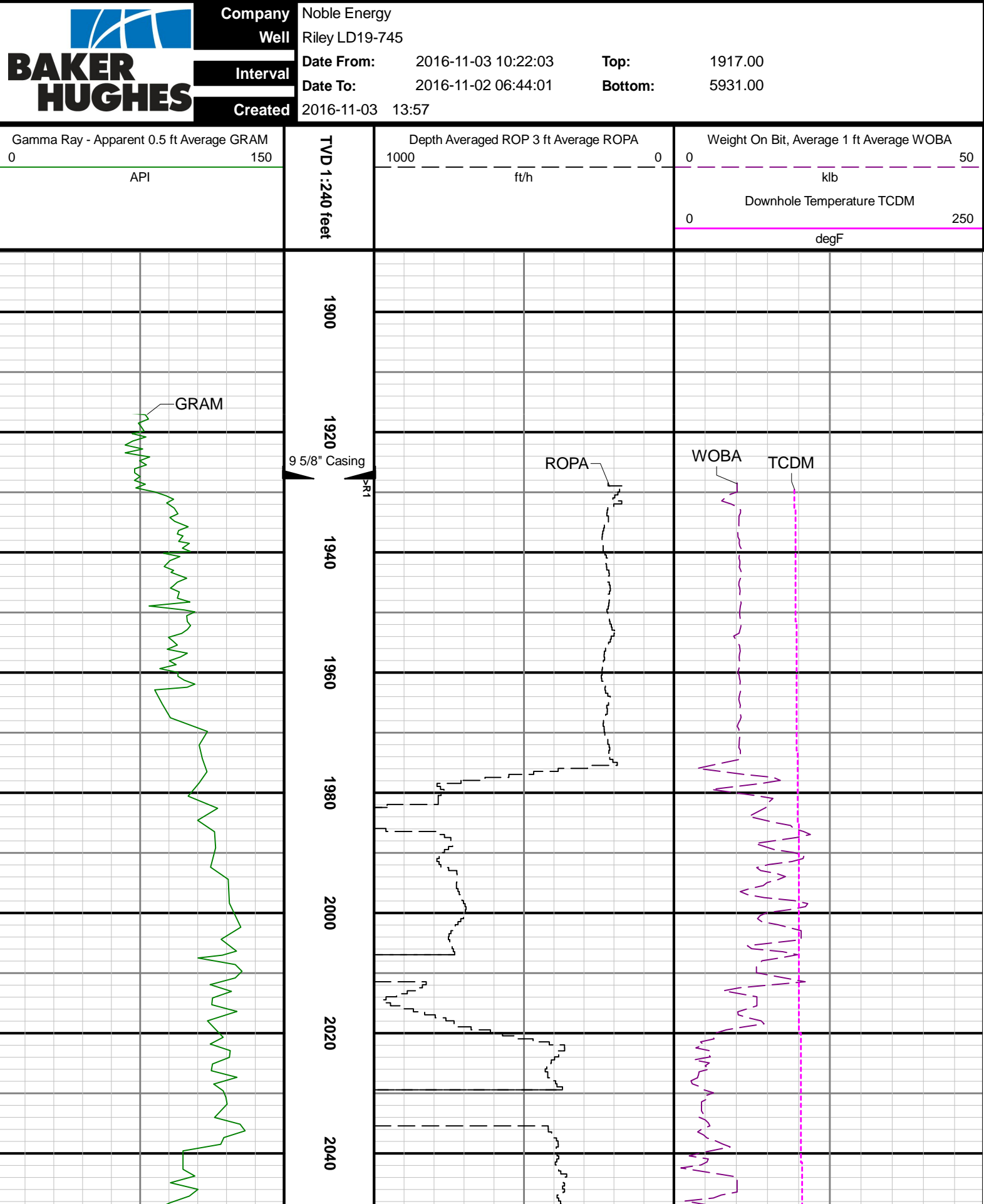
- 1
- Depth measurements obtained from a depth control system not supplied or operated by Baker Hughes. Due to lack of control by Baker Hughes logging engineers, depth calibrations and measurements could not be independently verified.
- 2
- Baker Hughes LWD Run 1 and Run 2 utilized 6 3/4 inch NaviGamma services (Gamma Ray and Directional) behind an 8 1/2 inch bit and rotary steerable assembly from 1928 to 10872 feet MD (1927 to 5881 feet TVD).

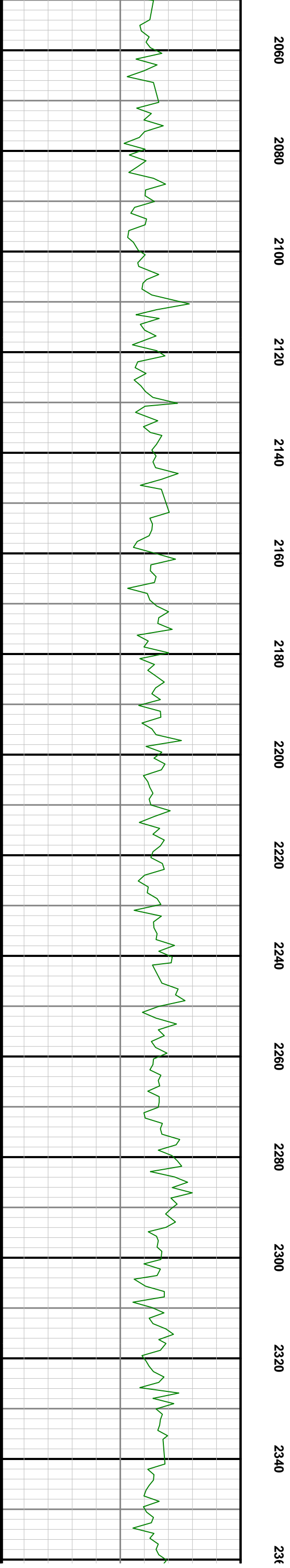
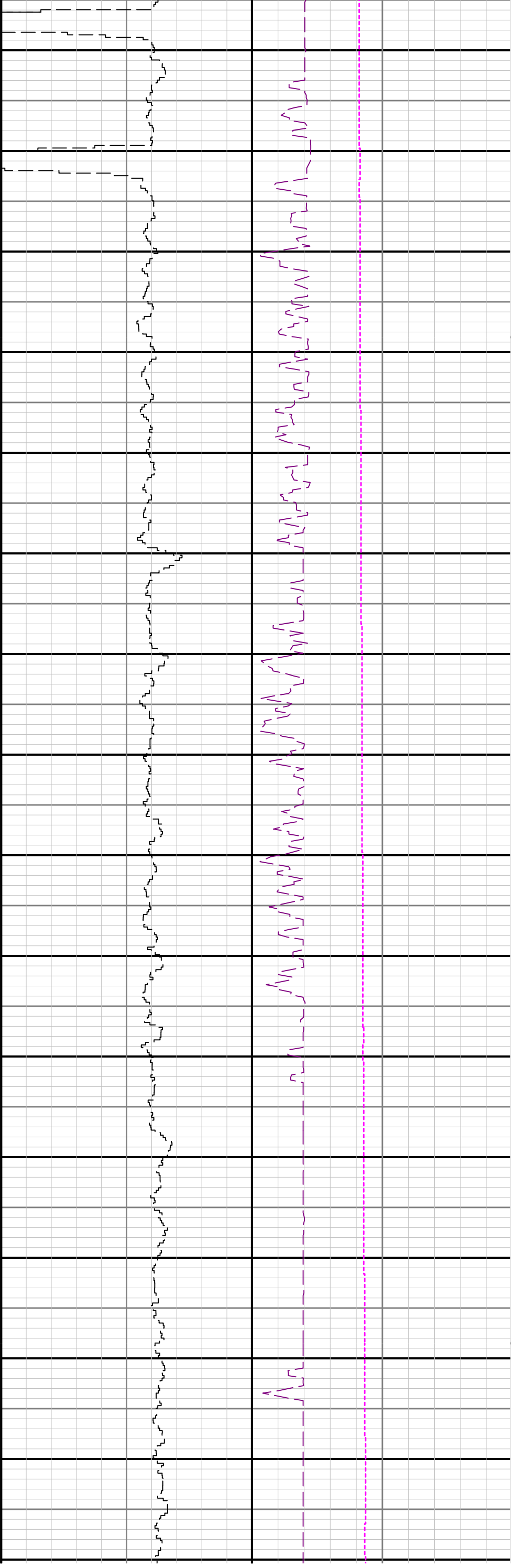
Remarks

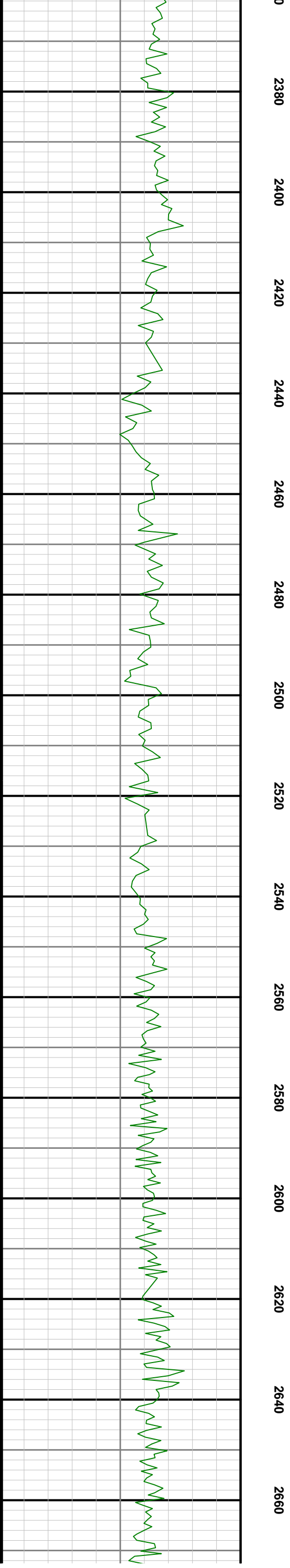
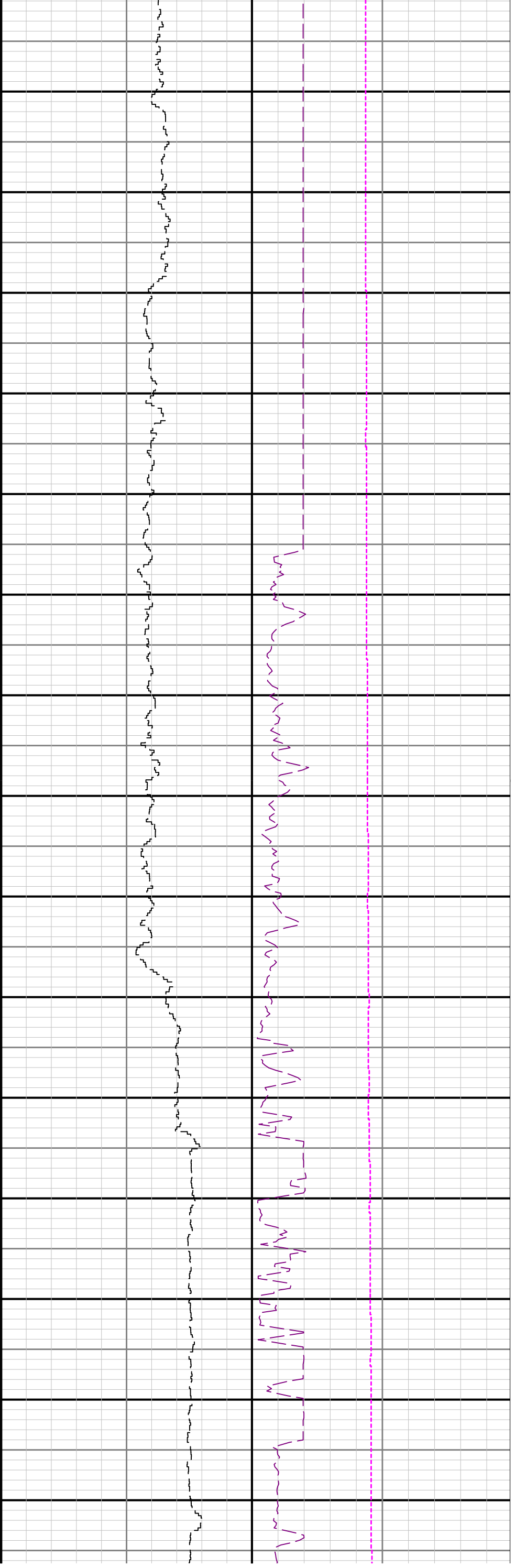
Number	Measured Depth (ft)	Hole Section (in)	Run No.	Remark
1	10872.00	8.500	2	The interval 10872 to 10859 feet MD (5889 to 5888 feet TVD) was not logged due to sensor to bit offset at well TD.

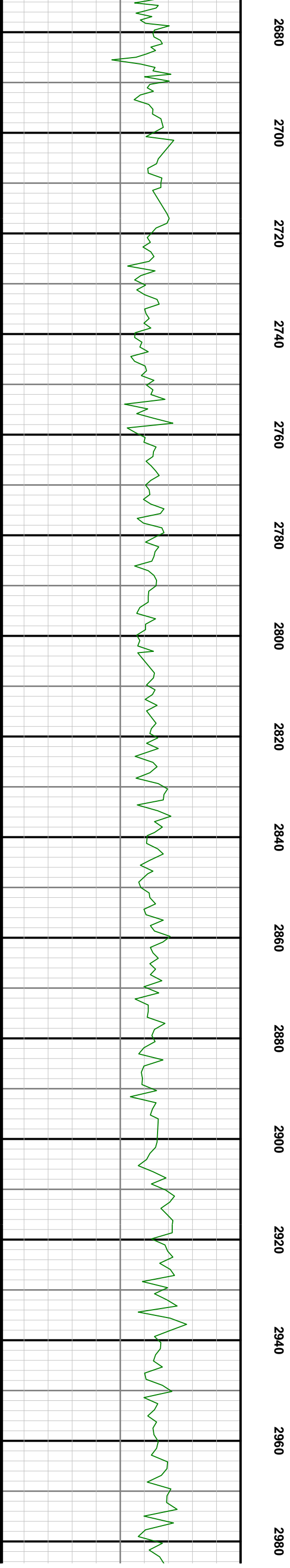
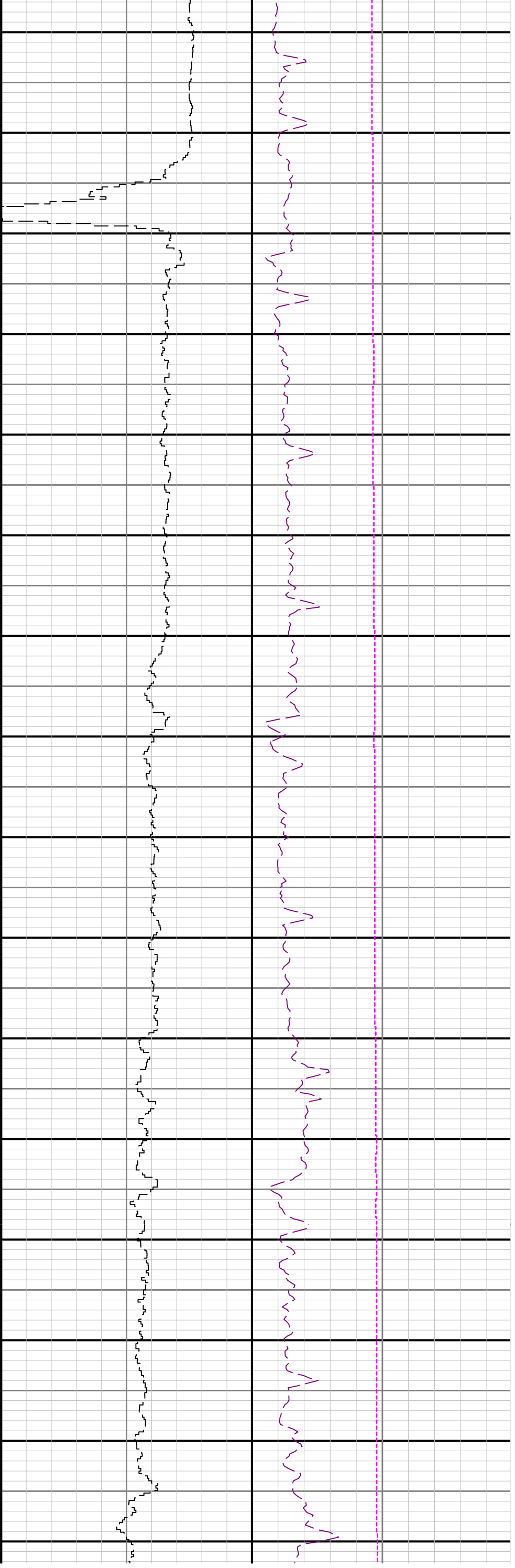
Curve Mnemonics

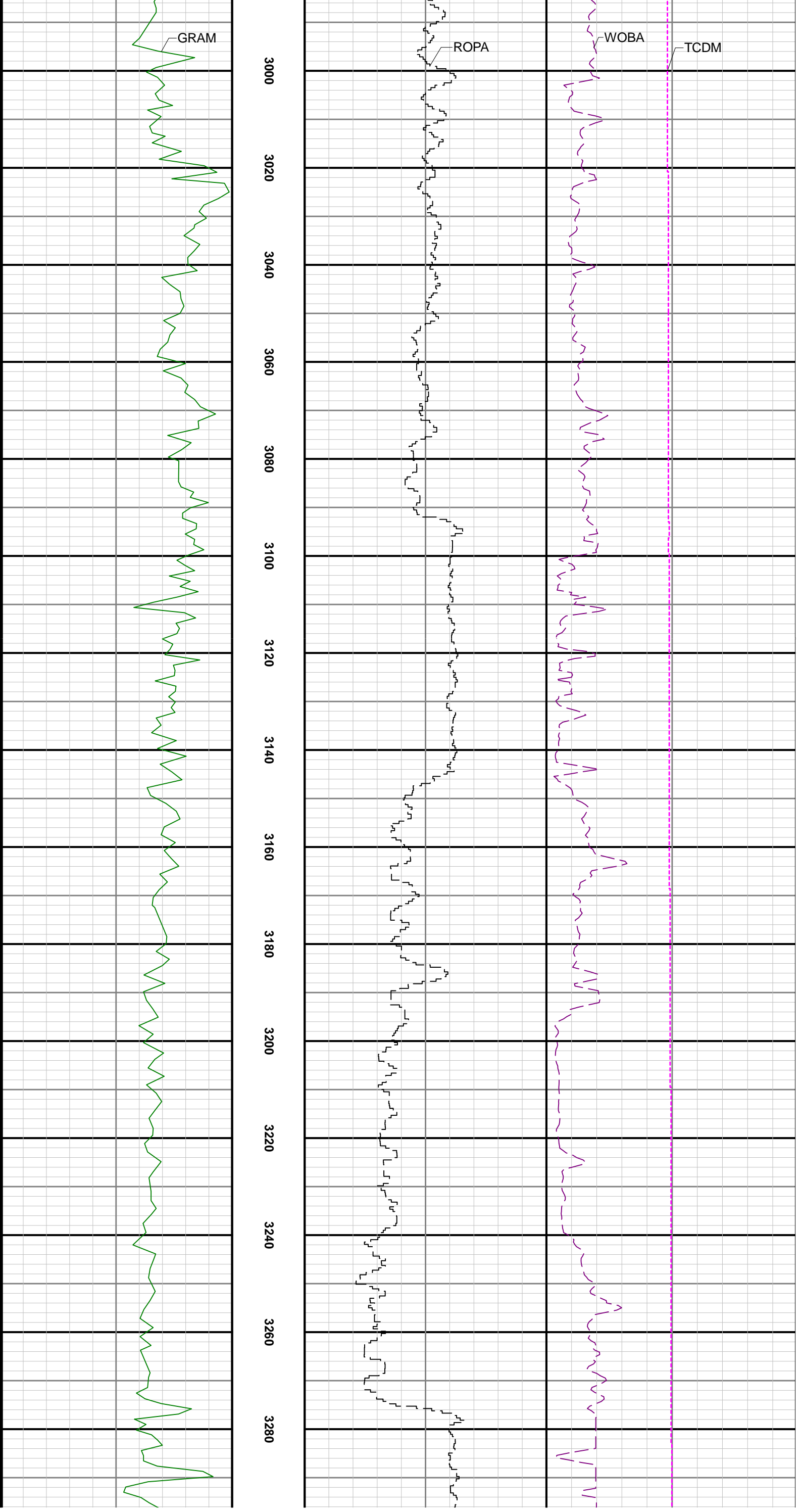
Presented Curves	Description	Units
ROPA	Depth Averaged ROP 3 ft Average	ft/h
WOBA	Weight On Bit, Average 1 ft Average	klb
GRAM	Gamma Ray - Apparent 0.5 ft Average	API
TCDM	Downhole Temperature	degF

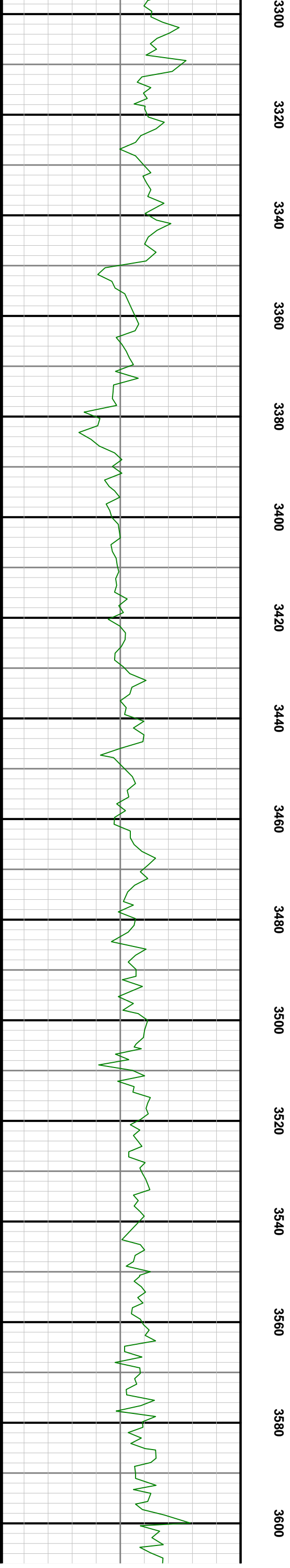
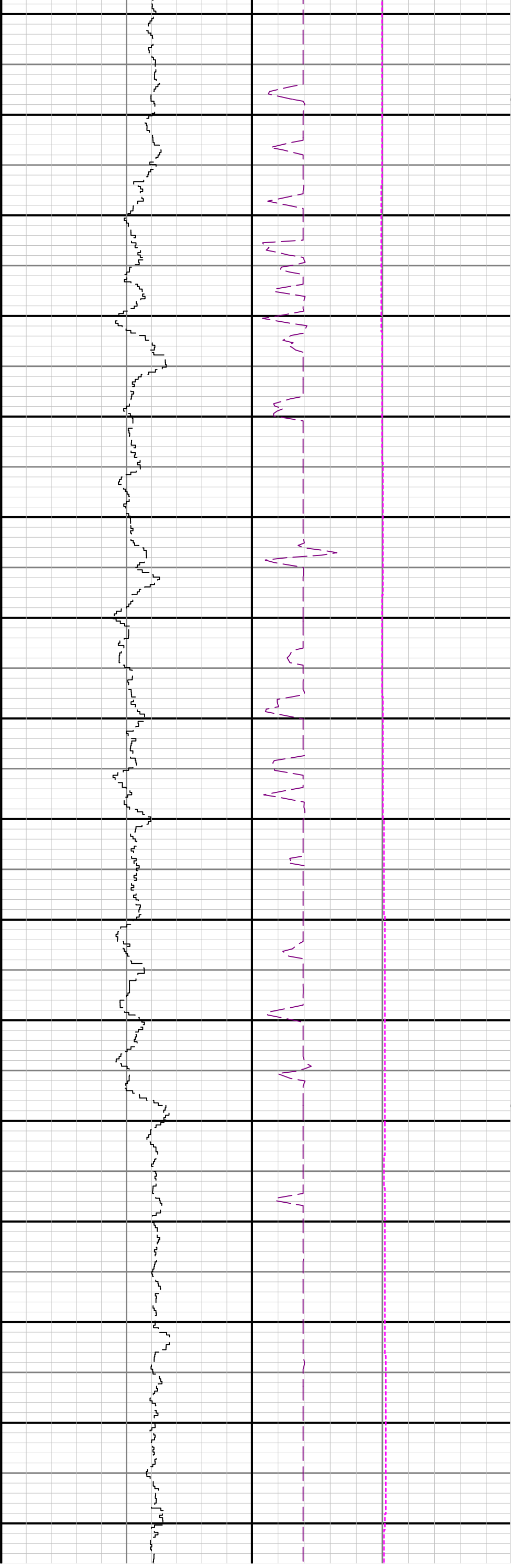


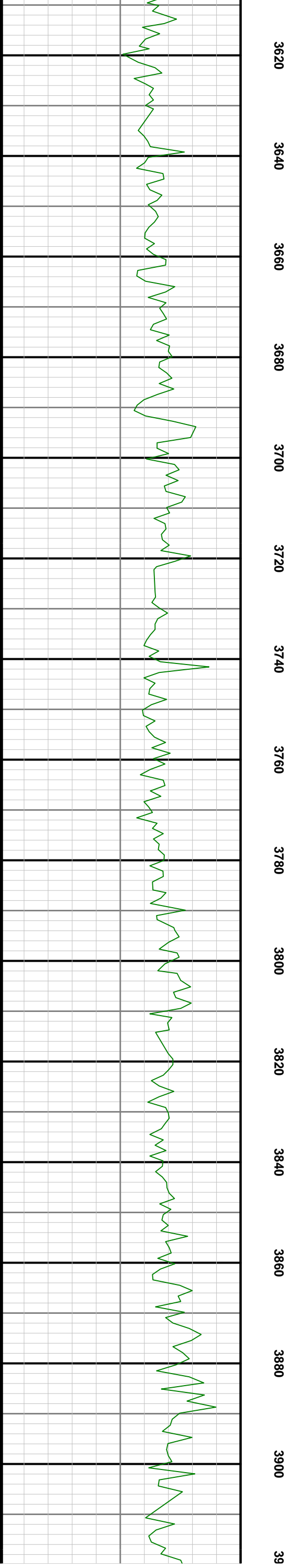
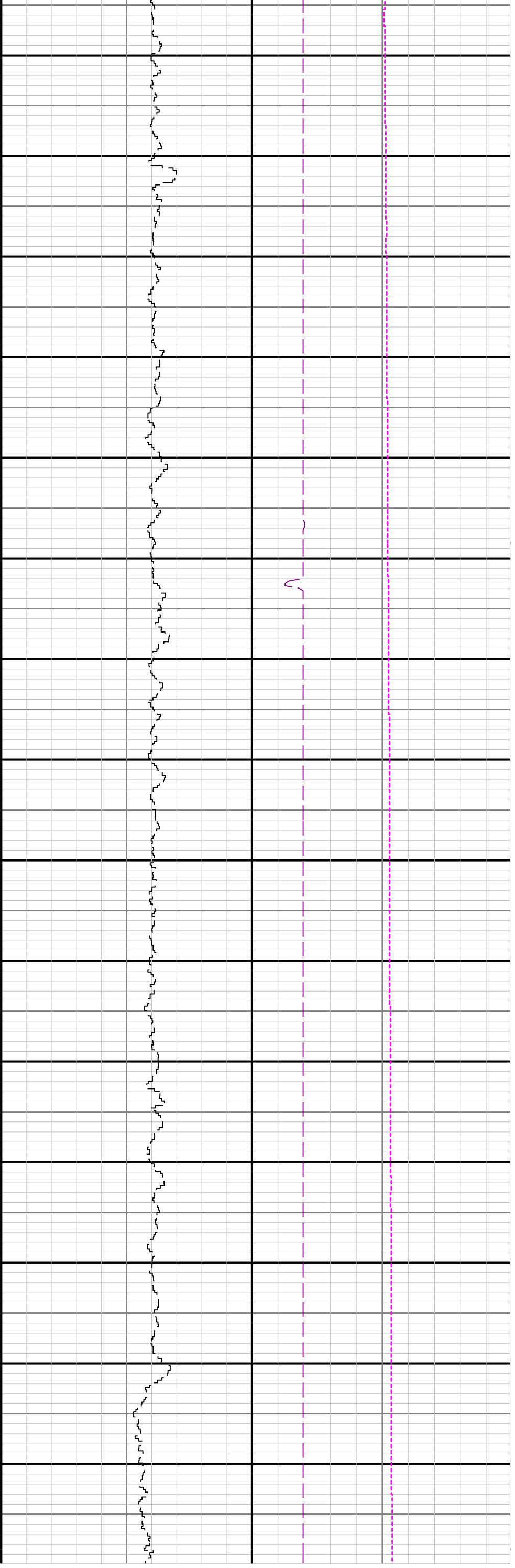




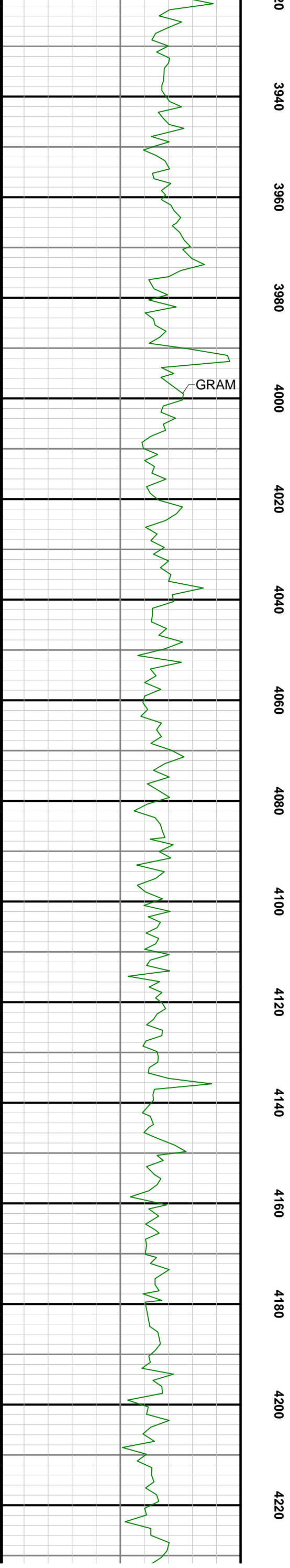
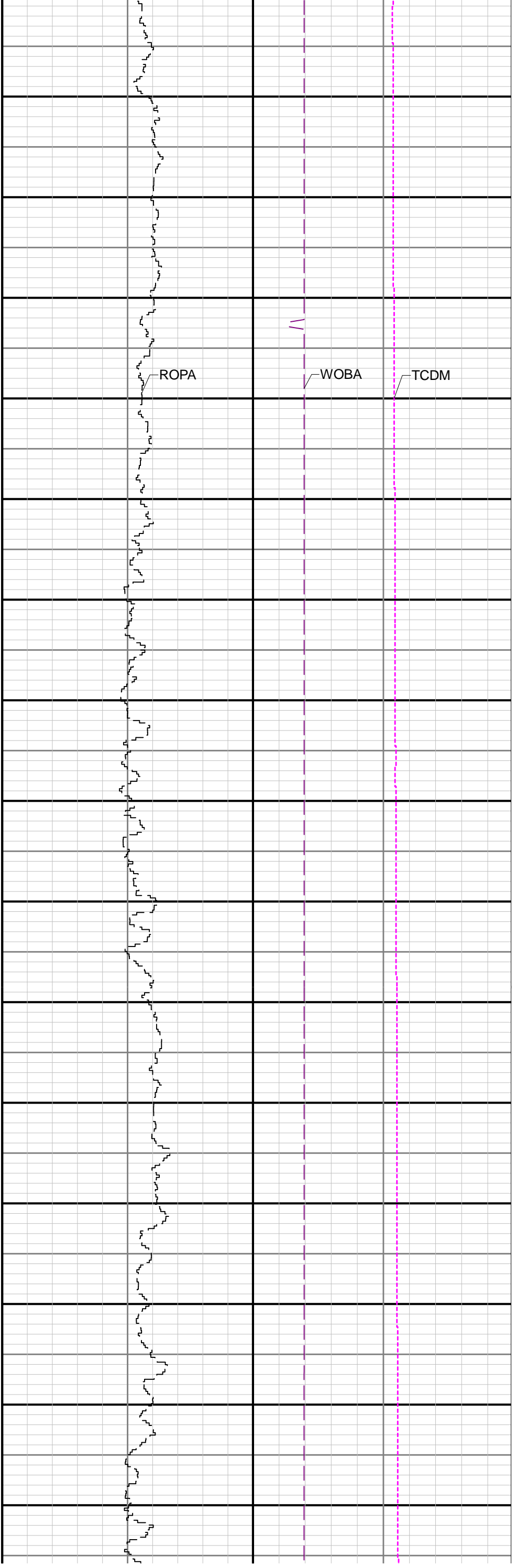


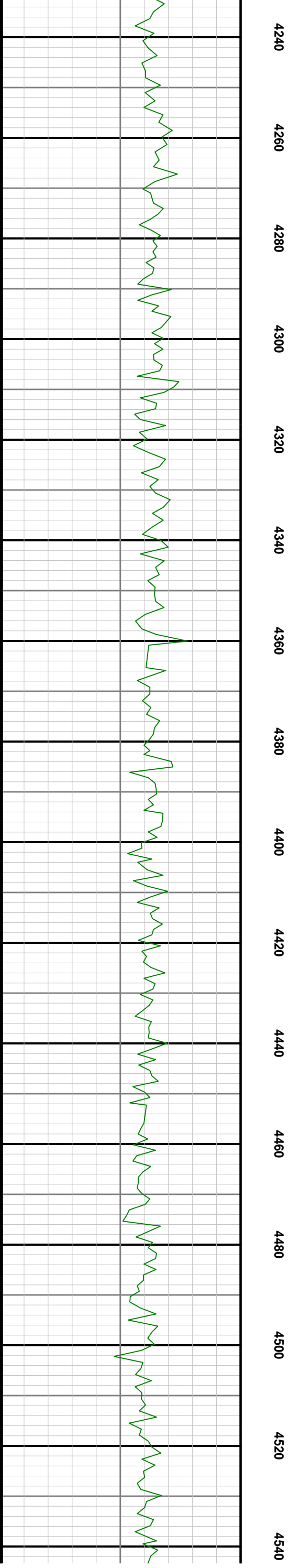
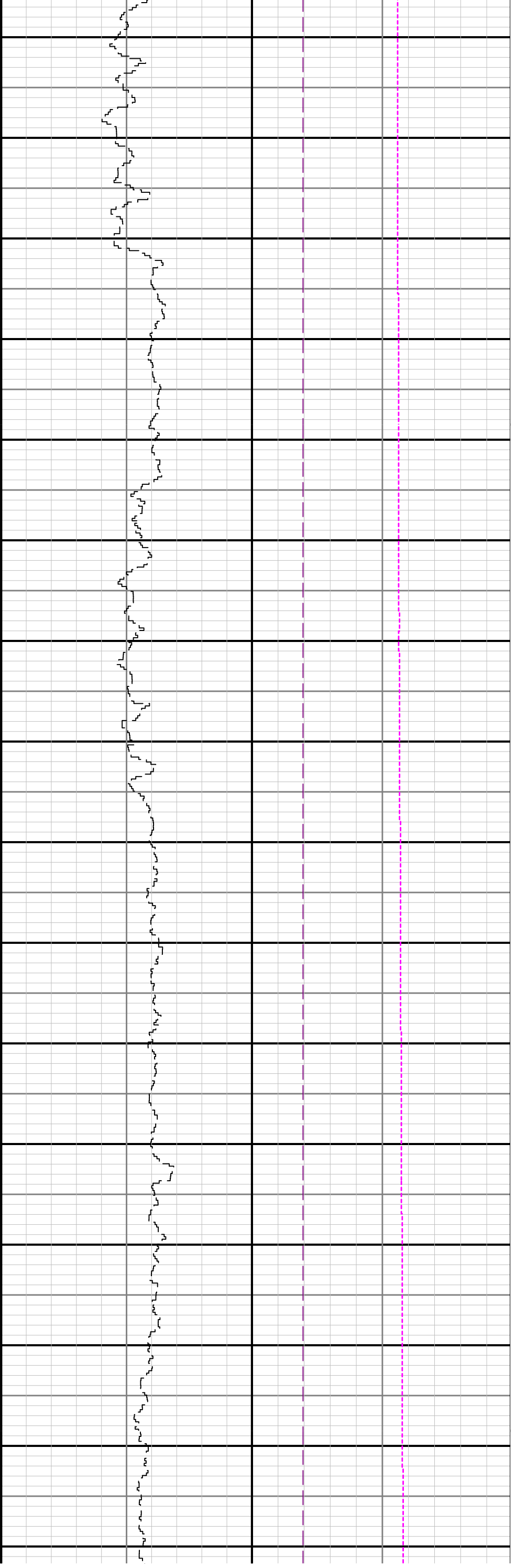


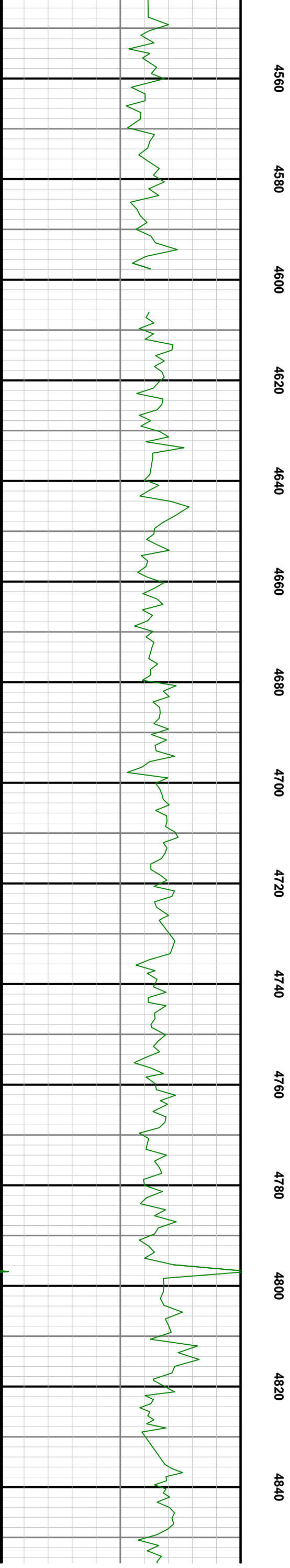
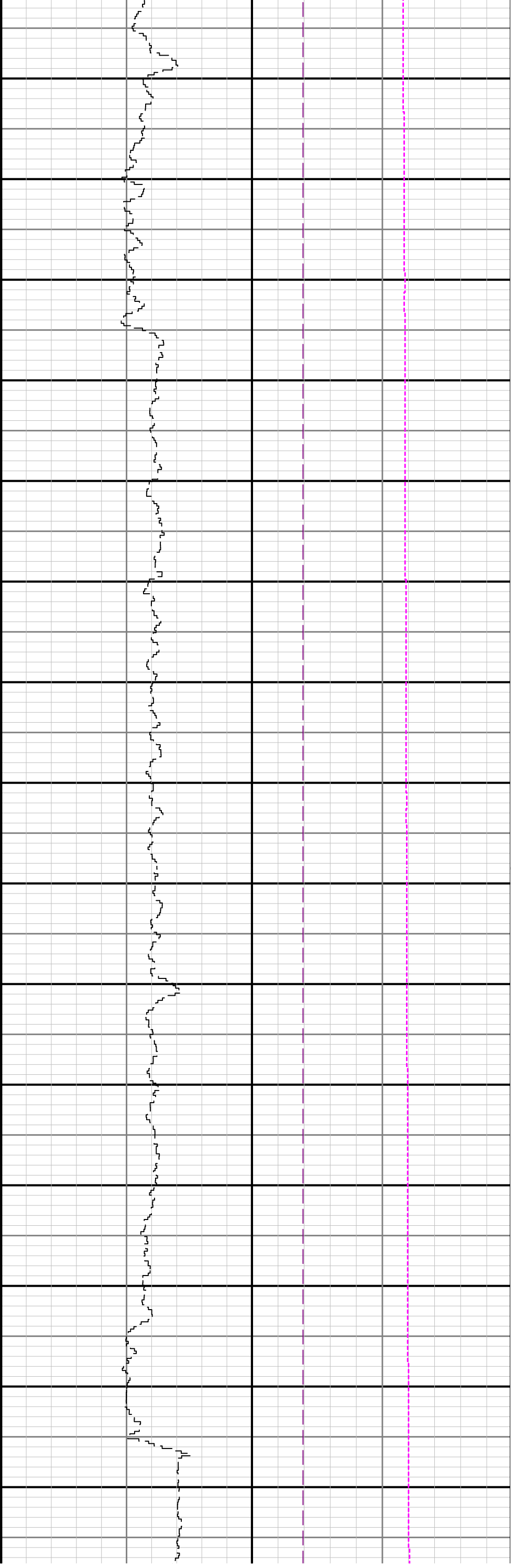


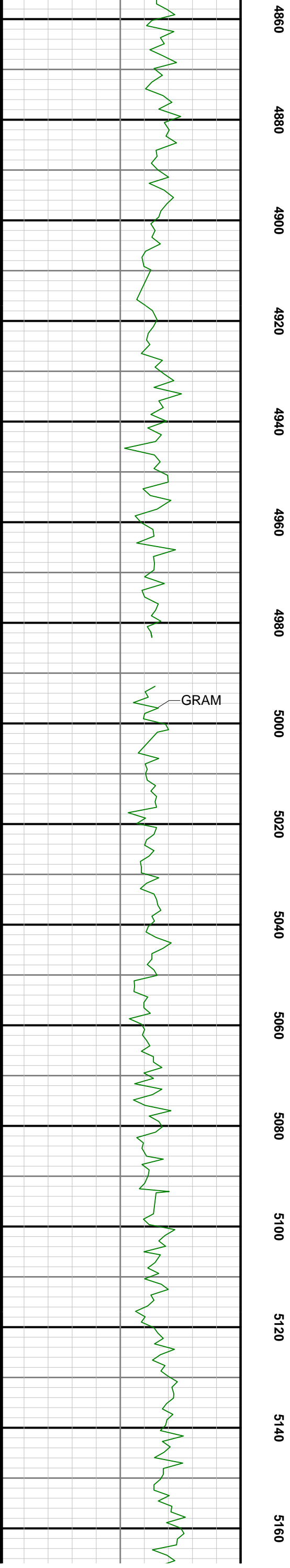
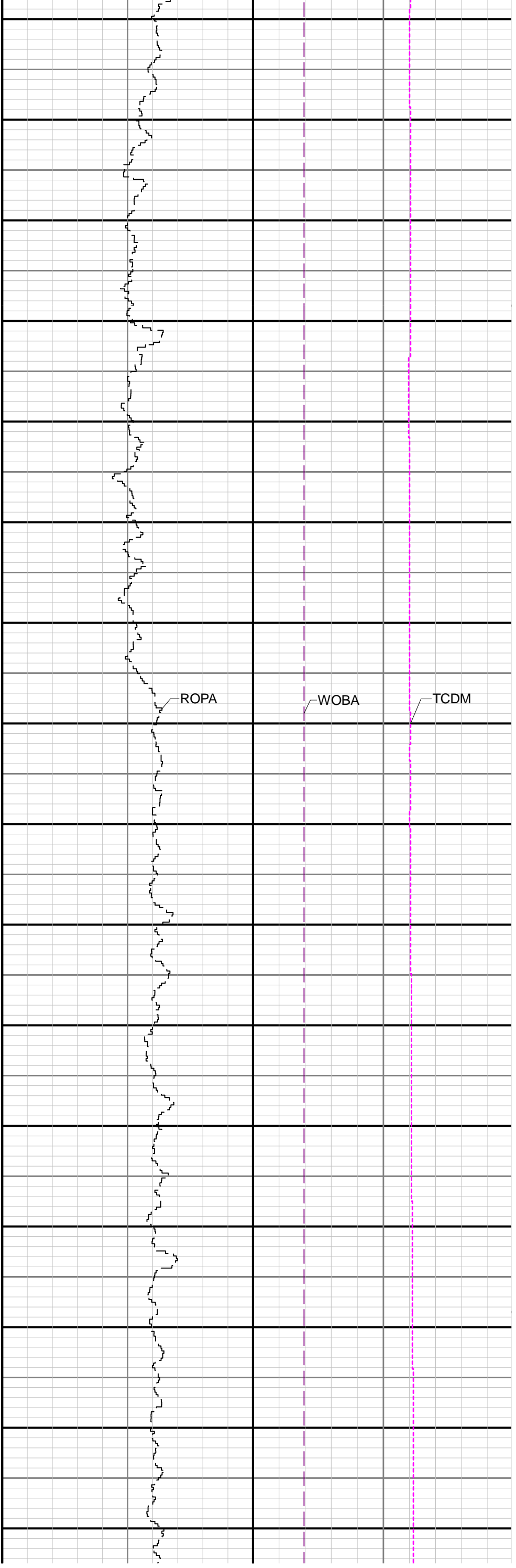


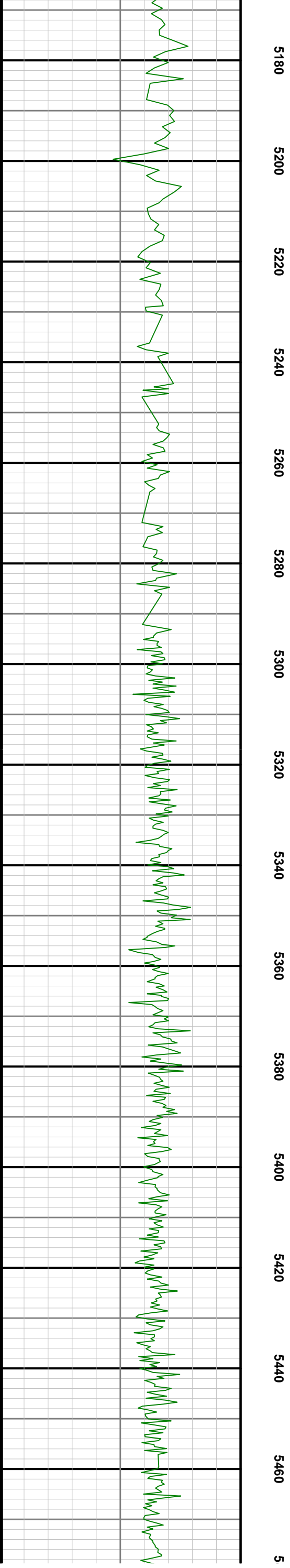
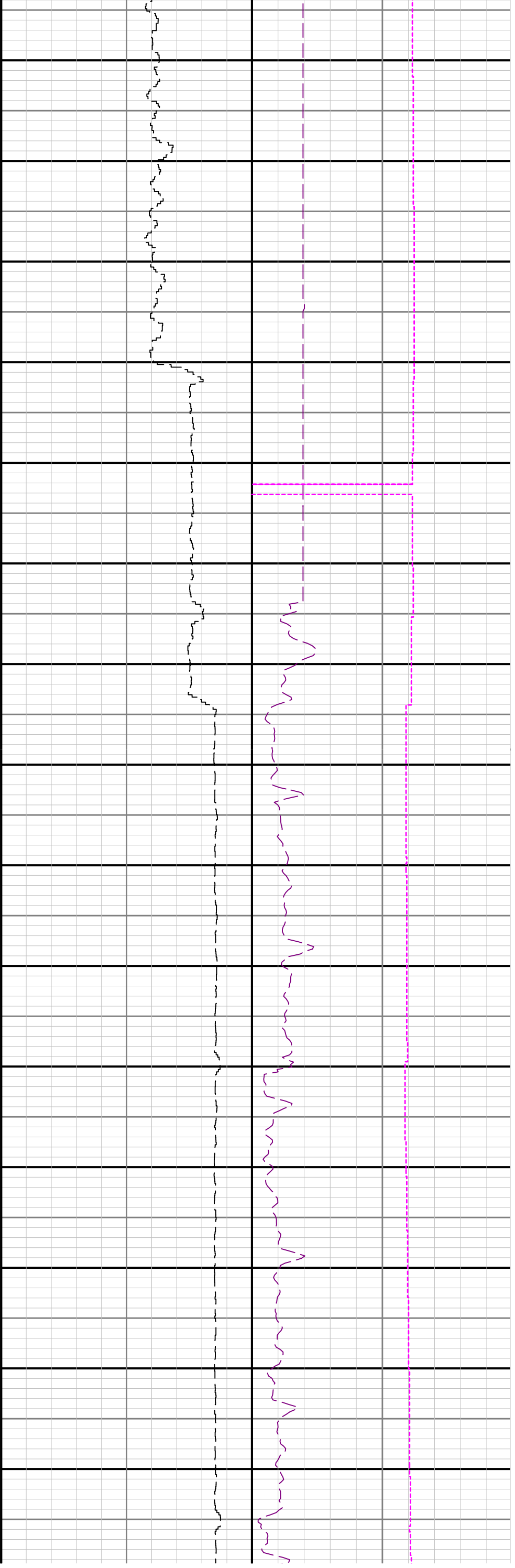


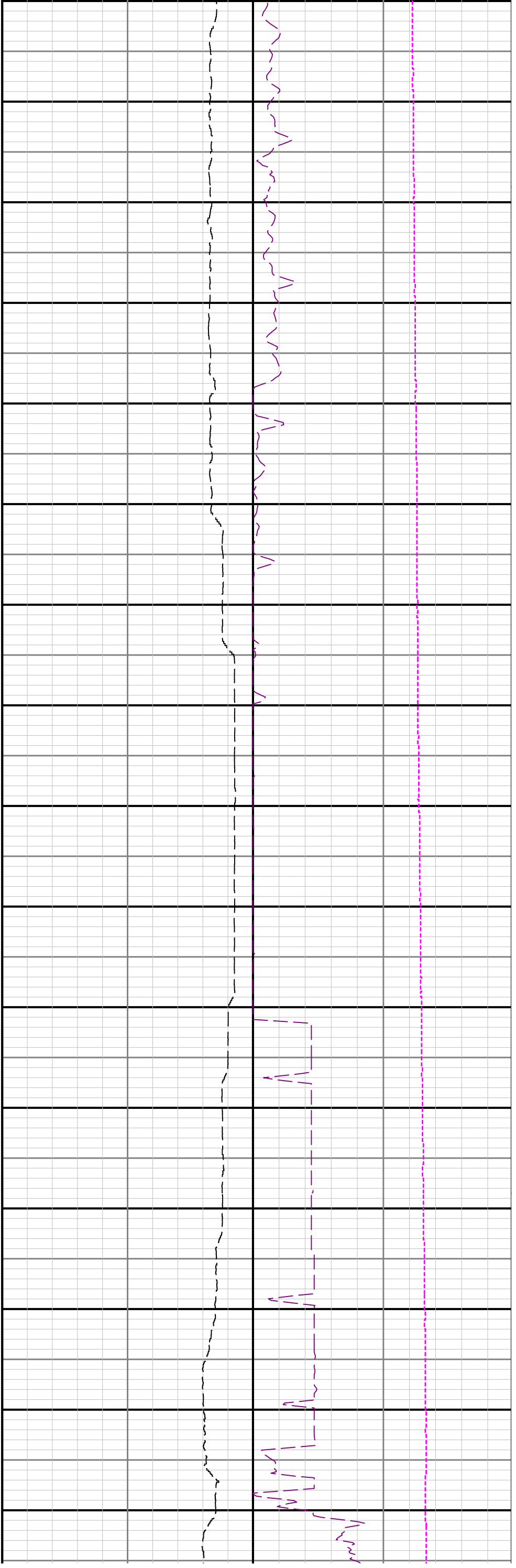




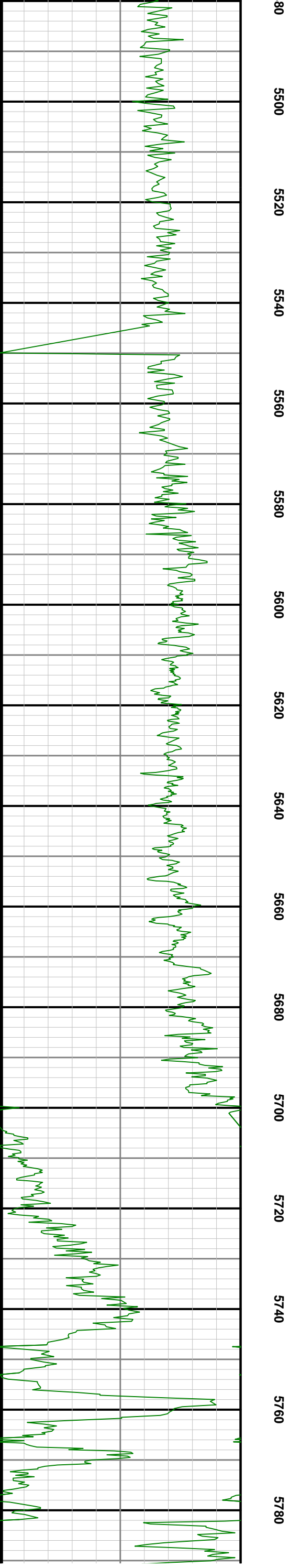








R1 > R2





	10750.00	90.40	357.37	N/A	4621.95	-858.47	5889.07	4700.88	95.00	1.67	0.06	1.67
	10844.00	90.49	0.06	N/A	4715.93	-860.17	5888.34	4793.69	94.00	2.33	0.10	2.33