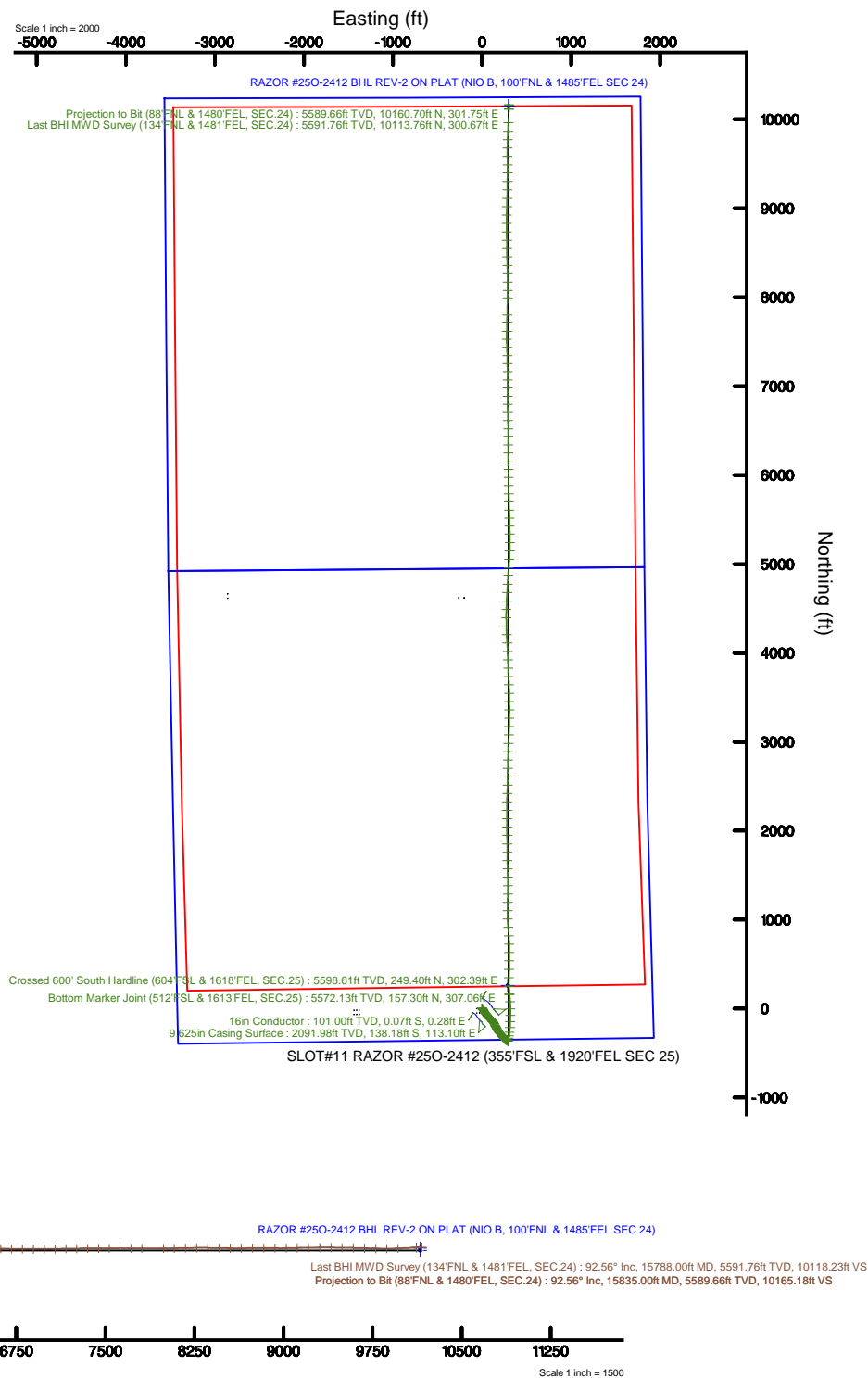
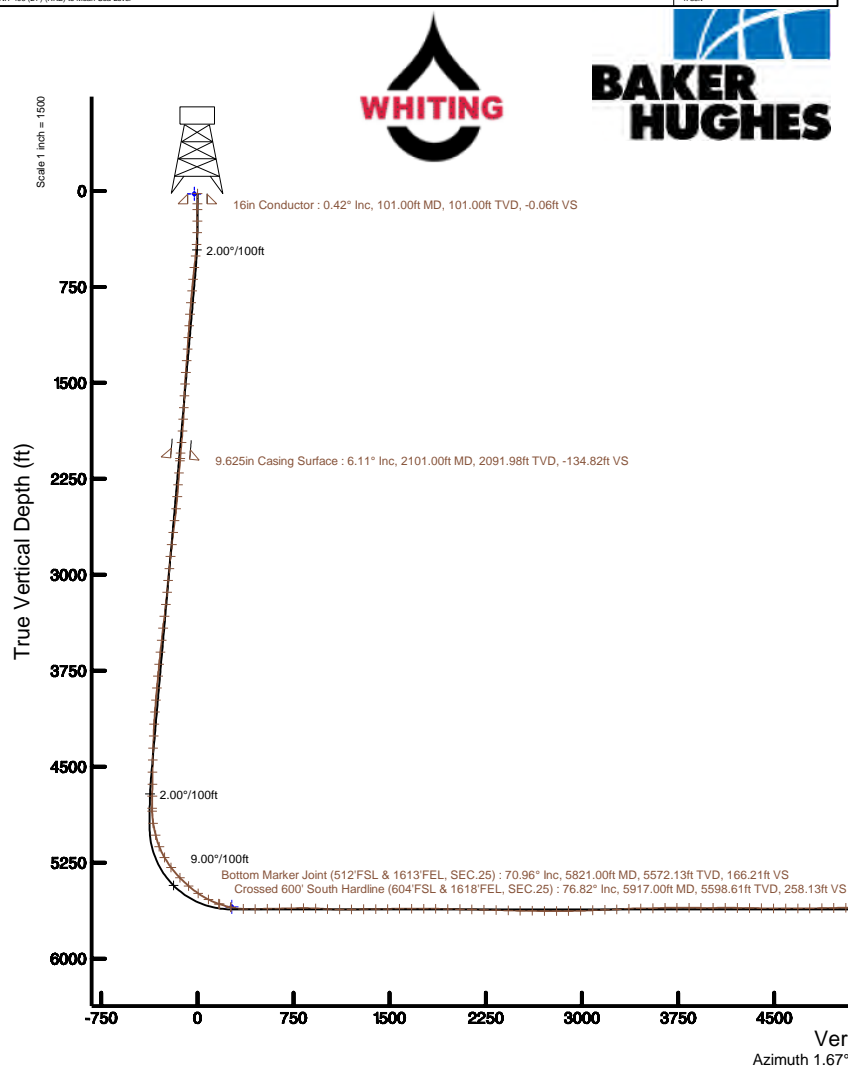


Location:	COLORADO	Slot:	SLOT#11 RAZOR #250-2412 (355'FSL & 1920'FEL SEC 25)
Field:	WELD COUNTY	Well:	RAZOR #250-2412
Facility:	SEC.25-T10N-R58W	Wellbore:	RAZOR #250-2412 PWB

Plot reference wellpath is RAZOR #250-2412 REV-B.0 PW/P	Grid System: NAD83 / Lambert Colorado SP, Northern Zone (501), US feet
True vertical depths are referenced to UNIT 406 (21) (RKB)	" = Wellpath was transformed from a different geodesic datum
Measured depths are referenced to UNIT 406 (21) (RKB)	North Reference: True north
UNIT 406 (21) (RKB) to Mean Sea Level: 4739 feet	Scale: True distance
Mean Sea Level to Mud line (At Slot: SLOTH11 RAZOR #250-2412 (356'FSL & 1820'FEL SEC 25)) 0 feet	Depths are in feet
Coordinates are in feet referenced to Slot	Created by: wmagnum on 2016-12-21
	Database: WA, DEN, Denver, Deln

Locality Name		Grid East (US R)	Grid North (US R)	Latitude	Longitude
SEC.25-T10N-R56W		3464569.074	1540014.606	40°48'13.160"N	103°49'18.690"W
Spot	Local N (R)	Local E (R)	Grid North (US R)	Latitude	Longitude
SLOT#11 RAZOR #250-2412 (355FSL & 1920FEL SEC 25)	-70.63	3258.40	3467828.231	1540005.652	40°48'12.460"N 103°48'36.320"W
UNIT 406 (21) (RKH) to Mud line (At Slot: SLOT#11 RAZOR #250-2412 (355FSL & 1920FEL SEC 25))					
Mean Sea Level to Mud line (At Slot: SLOT#11 RAZOR #250-2412 (355FSL & 1920FEL SEC 25))					
UNIT 406 (21) (RKH) to Mean Sea Level					





Actual Wellpath Report

RAZOR #250-2412 AWP

Page 1 of 10



REFERENCE WELLPATH IDENTIFICATION

Operator	WHITING OIL & GAS CORPORATION	Slot	SLOT#11 RAZOR #250-2412 (355'FSL & 1920'FEL SEC 25)
Area	COLORADO	Well	RAZOR #250-2412
Field	WELD COUNTY	Wellbore	RAZOR #250-2412 AWB
Facility	SEC.25-T10N-R58W		

REPORT SETUP INFORMATION

Projection System	NAD83 / Lambert Colorado SP, Northern Zone (501), US feet	Software System	WellArchitect® 5.0
North Reference	True	User	Wagnjam
Scale	1.000003	Report Generated	12/21/2016 at 11:44:43 AM
Convergence at slot	1.10° East	Database/Source file	WA_DEN_Denver_Defn/RAZOR_#250-2412_AWP.xml

WELLPATH LOCATION

	Local coordinates		Grid coordinates		Geographic coordinates	
	North[ft]	East[ft]	Easting[US ft]	Northing[US ft]	Latitude	Longitude
Slot Location	-70.63	3258.40	3467828.23	1540005.65	40°48'12.460"N	103°48'36.320"W
Facility Reference Pt			3464569.07	1540014.61	40°48'13.160"N	103°49'18.690"W
Field Reference Pt			3471270.16	1558347.59	40°51'13.010"N	103°47'46.990"W

WELLPATH DATUM

Calculation method	Minimum curvature	UNIT 406 (21') (RKB) to Facility Vertical Datum	4739.00ft
Horizontal Reference Pt	Slot	UNIT 406 (21') (RKB) to Mean Sea Level	4739.00ft
Vertical Reference Pt	UNIT 406 (21') (RKB)	UNIT 406 (21') (RKB) to Mud Line at Slot (SLOT#11 RAZOR #250-2412 (355'FSL & 1920'FEL SEC 25))	4739.00ft
MD Reference Pt	UNIT 406 (21') (RKB)	Section Origin	N 0.00, E 0.00 ft
Field Vertical Reference	Mean Sea Level	Section Azimuth	1.67°



Actual Wellpath Report

RAZOR #250-2412 AWP

Page 2 of 10



REFERENCE WELLPATH IDENTIFICATION

Operator	WHITING OIL & GAS CORPORATION	Slot	SLOT#11 RAZOR #250-2412 (355°FSL & 1920°FEL SEC 25)
Area	COLORADO	Well	RAZOR #250-2412
Field	WELD COUNTY	Wellbore	RAZOR #250-2412 AWB
Facility	SEC.25-T10N-R58W		

WELLPATH DATA (173 stations) † = interpolated/extrapolated station

MD [ft]	Inclination [°]	Azimuth [°]	TVD [ft]	Vert Sect [ft]	North [ft]	East [ft]	DLS [°/100ft]	Comments
0.00†	0.000	103.890	0.00	0.00	0.00	0.00	0.00	
21.00	0.000	103.890	21.00	0.00	0.00	0.00	0.00	
146.00	0.650	103.890	146.00	-0.15	-0.17	0.69	0.52	
237.00	0.570	113.420	236.99	-0.43	-0.47	1.60	0.14	
327.00	2.610	137.740	326.95	-2.07	-2.17	3.39	2.34	
418.00	4.740	140.550	417.76	-6.39	-6.61	7.18	2.35	
510.00	7.300	145.350	509.25	-13.97	-14.35	12.92	2.83	
601.00	7.450	146.420	599.49	-23.44	-24.02	19.47	0.22	
693.00	7.240	145.730	690.74	-33.01	-33.78	26.03	0.25	
784.00	6.630	145.540	781.07	-41.89	-42.85	32.23	0.67	
876.00	5.970	146.480	872.52	-50.09	-51.22	37.88	0.73	
968.00	5.470	144.180	964.06	-57.48	-58.76	43.09	0.60	
1059.00	5.380	141.210	1054.65	-64.17	-65.61	48.30	0.32	
1150.00	5.230	139.560	1145.26	-70.49	-72.09	53.66	0.24	
1241.00	5.040	144.380	1235.90	-76.75	-78.49	58.68	0.52	
1333.00	5.210	142.860	1327.53	-83.22	-85.11	63.55	0.24	
1424.00	5.510	142.150	1418.13	-89.80	-91.85	68.73	0.34	
1516.00	5.030	139.490	1509.74	-96.20	-98.41	74.06	0.59	
1608.00	4.480	134.550	1601.42	-101.63	-103.99	79.24	0.74	
1700.00	3.940	128.740	1693.18	-105.98	-108.49	84.27	0.75	
1791.00	5.170	131.120	1783.89	-110.47	-113.15	89.79	1.37	
1883.00	6.680	134.950	1875.39	-116.77	-119.65	96.70	1.70	
1974.00	6.700	139.380	1965.77	-124.33	-127.42	103.91	0.57	
2057.00	6.300	139.600	2048.24	-131.29	-134.56	110.01	0.48	
2119.00	6.030	139.370	2109.88	-136.22	-139.63	114.33	0.44	
2213.00	5.910	140.520	2203.37	-143.52	-147.11	120.63	0.18	
2307.00	5.600	142.400	2296.90	-150.71	-154.48	126.50	0.39	
2401.00	5.450	140.380	2390.46	-157.62	-161.55	132.15	0.26	
2495.00	7.790	155.500	2483.84	-166.69	-170.79	137.64	3.08	
2590.00	7.530	155.090	2577.99	-178.04	-182.29	142.93	0.28	



Actual Wellpath Report

RAZOR #250-2412 AWP

Page 3 of 10



REFERENCE WELLPATH IDENTIFICATION

Operator	WHITING OIL & GAS CORPORATION	Slot	SLOT#11 RAZOR #250-2412 (355'FSL & 1920'FEL SEC 25)
Area	COLORADO	Well	RAZOR #250-2412
Field	WELD COUNTY	Wellbore	RAZOR #250-2412 AWB
Facility	SEC.25-T10N-R58W		

WELLPATH DATA (173 stations)

MD [ft]	Inclination [°]	Azimuth [°]	TVD [ft]	Vert Sect [ft]	North [ft]	East [ft]	DLS [°/100ft]	Comments
2683.00	7.500	154.290	2670.19	-188.87	-193.29	148.13	0.12	
2777.00	7.280	153.580	2763.41	-199.58	-204.15	153.44	0.25	
2872.00	6.880	152.040	2857.68	-209.83	-214.56	158.79	0.47	
2966.00	6.490	149.150	2951.05	-219.20	-224.10	164.15	0.55	
3060.00	6.230	147.780	3044.47	-227.92	-232.97	169.59	0.32	
3154.00	6.100	146.710	3137.92	-236.24	-241.46	175.05	0.18	
3249.00	8.040	150.110	3232.20	-246.04	-251.44	181.14	2.09	
3343.00	7.850	147.640	3325.29	-256.96	-262.57	187.85	0.42	
3437.00	8.710	138.280	3418.32	-267.45	-273.30	196.02	1.70	
3532.00	8.740	138.910	3512.22	-277.98	-284.11	205.55	0.11	
3626.00	8.120	140.460	3605.20	-288.22	-294.61	214.47	0.70	
3721.00	7.460	142.600	3699.33	-298.05	-304.69	222.49	0.76	
3815.00	6.800	143.800	3792.60	-307.18	-314.02	229.48	0.72	
3909.00	6.570	144.540	3885.96	-315.86	-322.89	235.89	0.26	
4004.00	7.360	131.000	3980.26	-324.05	-331.31	243.63	1.91	
4098.00	6.520	131.090	4073.57	-331.26	-338.77	252.20	0.89	
4192.00	5.490	127.520	4167.06	-337.28	-345.02	259.79	1.17	
4286.00	4.150	116.700	4260.72	-341.35	-349.29	266.39	1.72	
4380.00	5.220	125.760	4354.41	-345.19	-353.31	272.90	1.38	
4474.00	3.360	109.600	4448.15	-348.43	-356.74	278.97	2.34	
4568.00	2.960	112.030	4542.00	-350.12	-358.57	283.81	0.45	
4663.00	2.310	108.380	4636.90	-351.53	-360.09	287.90	0.71	
4757.00	1.700	102.910	4730.84	-352.34	-361.00	291.06	0.68	
4852.00	0.130	12.280	4825.83	-352.51	-361.21	292.46	1.80	
4875.00	0.130	97.850	4848.83	-352.49	-361.19	292.49	0.77	
4969.00	9.230	11.700	4942.42	-345.06	-353.81	294.13	9.81	
5064.00	14.410	8.320	5035.38	-325.80	-334.64	297.38	5.50	
5158.00	21.140	9.450	5124.84	-297.36	-306.31	301.87	7.17	
5252.00	30.230	8.090	5209.46	-256.96	-266.08	307.99	9.69	
5346.00	37.070	3.230	5287.68	-205.06	-214.29	312.92	7.82	



Actual Wellpath Report

RAZOR #250-2412 AWP

Page 4 of 10



REFERENCE WELLPATH IDENTIFICATION

Operator	WHITING OIL & GAS CORPORATION	Slot	SLOT#11 RAZOR #250-2412 (355'FSL & 1920'FEL SEC 25)
Area	COLORADO	Well	RAZOR #250-2412
Field	WELD COUNTY	Wellbore	RAZOR #250-2412 AWB
Facility	SEC.25-T10N-R58W		

WELLPATH DATA (173 stations) † = interpolated/extrapolated station

MD [ft]	Inclination [°]	Azimuth [°]	TVD [ft]	Vert Sect [ft]	North [ft]	East [ft]	DLS [°/100ft]	Comments
5452.00	43.710	0.810	5368.38	-136.42	-145.69	315.25	6.44	
5546.00	49.610	2.780	5432.87	-68.09	-77.40	317.44	6.46	
5640.00	55.180	359.300	5490.21	6.33	-2.99	318.71	6.61	
5734.00	63.250	354.460	5538.31	86.68	77.53	314.18	9.65	
5821.00†	70.960	355.324	5572.13	166.21	157.30	307.06	8.91	Bottom Marker Joint (512'FSL & 1613'FEL, SEC.25)
5828.00	71.580	355.390	5574.38	172.80	163.91	306.53	8.91	
5917.00†	76.824	359.021	5598.61	258.13	249.40	302.39	7.08	Crossed 600' South Hardline (604'FSL & 1618'FEL, SEC.25)
5922.00	77.120	359.220	5599.73	263.00	254.27	302.31	7.08	
6017.00	87.970	0.860	5612.04	357.01	348.32	302.40	11.55	
6111.00	90.650	0.480	5613.17	450.98	442.30	303.50	2.88	
6205.00	91.880	0.770	5611.10	544.94	536.27	304.52	1.34	
6300.00	90.090	0.370	5609.47	639.91	631.25	305.47	1.93	
6394.00	91.940	358.240	5607.80	733.80	725.22	304.33	3.00	
6488.00	89.750	357.090	5606.41	827.55	819.12	300.50	2.63	
6582.00	87.750	355.630	5608.46	921.12	912.90	294.53	2.63	
6676.00	86.940	358.030	5612.82	1014.68	1006.65	289.34	2.69	
6770.00	89.630	0.690	5615.63	1108.54	1100.59	288.29	4.02	
6864.00	90.890	0.790	5615.21	1202.53	1194.57	289.50	1.34	
6958.00	90.430	0.600	5614.12	1296.51	1288.56	290.64	0.53	
7052.00	90.310	359.340	5613.52	1390.46	1382.56	290.60	1.35	
7146.00	90.980	359.980	5612.46	1484.40	1476.55	290.04	0.99	
7239.00	91.420	357.820	5610.51	1577.26	1569.51	288.25	2.37	
7333.00	89.170	358.730	5610.03	1671.09	1663.45	285.42	2.58	
7427.00	90.460	359.560	5610.33	1764.99	1757.44	284.02	1.63	
7521.00	88.550	359.890	5611.14	1858.93	1851.43	283.57	2.06	
7616.00	88.800	359.640	5613.34	1953.85	1946.41	283.18	0.37	
7710.00	89.820	359.100	5614.47	2047.77	2040.39	282.15	1.23	
7804.00	88.550	359.550	5615.81	2141.68	2134.37	281.04	1.43	
7898.00	88.950	359.530	5617.86	2235.59	2228.35	280.29	0.43	
7993.00	88.340	1.890	5620.10	2330.54	2323.31	281.46	2.57	



Actual Wellpath Report

RAZOR #250-2412 AWP

Page 5 of 10



REFERENCE WELLPATH IDENTIFICATION

Operator	WHITING OIL & GAS CORPORATION	Slot	SLOT#11 RAZOR #250-2412 (355°FSL & 1920°FEL SEC 25)
Area	COLORADO	Well	RAZOR #250-2412
Field	WELD COUNTY	Wellbore	RAZOR #250-2412 AWB
Facility	SEC.25-T10N-R58W		

WELLPATH DATA (173 stations)

MD [ft]	Inclination [°]	Azimuth [°]	TVD [ft]	Vert Sect [ft]	North [ft]	East [ft]	DLS [°/100ft]	Comments
8087.00	88.460	1.800	5622.73	2424.50	2417.22	284.49	0.16	
8181.00	88.920	1.660	5624.88	2518.48	2511.15	287.32	0.51	
8275.00	89.140	0.320	5626.47	2612.46	2605.12	288.95	1.44	
8370.00	89.570	1.030	5627.54	2707.43	2700.11	290.07	0.87	
8464.00	90.340	1.780	5627.61	2801.43	2794.08	292.37	1.14	
8558.00	90.150	0.870	5627.21	2895.43	2888.05	294.55	0.99	
8653.00	91.880	2.240	5625.53	2990.41	2983.00	297.12	2.32	
8747.00	92.650	1.870	5621.81	3084.33	3076.86	300.49	0.91	
8841.00	91.660	1.600	5618.28	3178.26	3170.75	303.33	1.09	
8935.00	92.430	1.320	5614.92	3272.20	3264.66	305.73	0.87	
9029.00	92.770	359.990	5610.66	3366.09	3358.56	306.80	1.46	
9123.00	90.310	358.760	5608.13	3459.97	3452.51	305.78	2.93	
9217.00	91.110	358.920	5606.97	3553.85	3546.48	303.87	0.87	
9311.00	92.220	358.890	5604.24	3647.70	3640.42	302.08	1.18	
9405.00	90.060	356.530	5602.37	3741.44	3734.32	298.32	3.40	
9499.00	88.920	358.670	5603.20	3835.19	3828.22	294.39	2.58	
9593.00	89.570	358.390	5604.44	3929.04	3922.18	291.97	0.75	
9688.00	90.340	357.630	5604.52	4023.85	4017.12	288.68	1.14	
9782.00	90.030	356.150	5604.21	4117.51	4110.98	283.58	1.61	
9877.00	89.600	356.950	5604.52	4212.13	4205.81	277.86	0.96	
9972.00	89.110	359.160	5605.59	4306.93	4300.74	274.64	2.38	
10066.00	89.010	358.930	5607.13	4400.82	4394.72	273.07	0.27	
10160.00	89.510	2.620	5608.35	4494.78	4488.68	274.34	3.96	
10254.00	89.660	2.620	5609.03	4588.77	4582.58	278.64	0.16	
10349.00	90.340	3.350	5609.03	4683.74	4677.45	283.58	1.05	
10443.00	90.800	2.950	5608.09	4777.71	4771.31	288.75	0.65	
10537.00	91.480	3.340	5606.22	4871.66	4865.14	293.91	0.83	
10630.00	90.520	3.450	5604.60	4964.60	4957.97	299.41	1.04	
10724.00	90.800	4.210	5603.52	5058.53	5051.75	305.69	0.86	
10818.00	89.380	0.980	5603.37	5152.50	5145.64	309.95	3.75	



Actual Wellpath Report

RAZOR #250-2412 AWP

Page 6 of 10



REFERENCE WELLPATH IDENTIFICATION

Operator	WHITING OIL & GAS CORPORATION	Slot	SLOT#11 RAZOR #250-2412 (355'FSL & 1920'FEL SEC 25)
Area	COLORADO	Well	RAZOR #250-2412
Field	WELD COUNTY	Wellbore	RAZOR #250-2412 AWB
Facility	SEC.25-T10N-R58W		

WELLPATH DATA (173 stations)

MD [ft]	Inclination [°]	Azimuth [°]	TVD [ft]	Vert Sect [ft]	North [ft]	East [ft]	DLS [°/100ft]	Comments
10913.00	89.660	359.760	5604.16	5247.47	5240.63	310.56	1.32	
11007.00	89.320	359.820	5605.00	5341.41	5334.63	310.21	0.37	
11099.00	89.260	359.030	5606.14	5433.34	5426.61	309.29	0.86	
11190.00	89.320	358.190	5607.27	5524.20	5517.58	307.08	0.93	
11280.00	88.980	357.780	5608.60	5614.00	5607.51	303.92	0.59	
11371.00	88.490	358.960	5610.61	5704.83	5698.45	301.33	1.40	
11463.00	89.380	359.230	5612.32	5796.71	5790.42	299.88	1.01	
11554.00	90.340	359.410	5612.55	5887.64	5881.42	298.80	1.07	
11646.00	91.020	359.830	5611.45	5979.57	5973.41	298.19	0.87	
11737.00	90.800	358.850	5610.01	6070.48	6064.39	297.14	1.10	
11829.00	92.340	0.030	5607.49	6162.37	6156.34	296.24	2.11	
11921.00	93.300	359.720	5602.96	6254.22	6248.23	296.04	1.10	
12012.00	92.160	359.720	5598.63	6345.06	6339.13	295.60	1.25	
12103.00	89.480	359.700	5597.33	6435.99	6430.11	295.14	2.95	
12194.00	89.080	359.240	5598.47	6526.91	6521.10	294.29	0.67	
12286.00	88.770	358.850	5600.19	6618.80	6613.07	292.76	0.54	
12377.00	88.430	358.270	5602.42	6709.64	6704.01	290.48	0.74	
12469.00	89.630	358.800	5603.98	6801.48	6795.97	288.12	1.43	
12561.00	89.970	0.030	5604.30	6893.41	6887.96	287.18	1.39	
12653.00	90.490	0.640	5603.93	6985.38	6979.95	287.72	0.87	
12744.00	90.890	359.980	5602.83	7076.35	7070.95	288.22	0.85	
12836.00	90.950	359.270	5601.35	7168.28	7162.93	287.61	0.77	
12927.00	90.890	358.970	5599.89	7259.18	7253.91	286.22	0.34	
13018.00	90.340	358.300	5598.92	7350.04	7344.88	284.05	0.95	
13110.00	90.490	358.180	5598.25	7441.87	7436.83	281.22	0.21	
13200.00	89.540	359.560	5598.23	7531.76	7526.81	279.45	1.86	
13291.00	90.340	1.240	5598.32	7622.74	7617.80	280.08	2.04	
13383.00	89.940	1.000	5598.10	7714.73	7709.79	281.88	0.51	
13475.00	89.660	1.570	5598.42	7806.73	7801.76	283.94	0.69	
13658.00	90.060	0.960	5598.87	7989.72	7984.72	287.98	0.40	



Actual Wellpath Report

RAZOR #250-2412 AWP

Page 7 of 10



REFERENCE WELLPATH IDENTIFICATION

Operator	WHITING OIL & GAS CORPORATION	Slot	SLOT#11 RAZOR #250-2412 (355'FSL & 1920'FEL SEC 25)
Area	COLORADO	Well	RAZOR #250-2412
Field	WELD COUNTY	Wellbore	RAZOR #250-2412 AWB
Facility	SEC.25-T10N-R58W		

WELLPATH DATA (173 stations)

MD [ft]	Inclination [°]	Azimuth [°]	TVD [ft]	Vert Sect [ft]	North [ft]	East [ft]	DLS [°/100ft]	Comments
13749.00	91.420	0.540	5597.69	8080.70	8075.70	289.18	1.56	
13843.00	91.200	359.270	5595.54	8174.63	8169.67	289.02	1.37	
13937.00	90.370	359.090	5594.25	8268.53	8263.65	287.67	0.90	
14031.00	89.450	357.720	5594.40	8362.37	8357.61	285.06	1.76	
14126.00	89.140	359.690	5595.57	8457.23	8452.58	282.91	2.10	
14220.00	89.110	359.050	5597.01	8551.15	8546.56	281.88	0.68	
14314.00	90.580	359.060	5597.26	8645.04	8640.54	280.33	1.56	
14409.00	91.140	358.660	5595.83	8739.92	8735.51	278.44	0.72	
14503.00	89.570	1.040	5595.25	8833.86	8829.50	278.19	3.03	
14597.00	88.860	359.890	5596.54	8927.83	8923.49	278.95	1.44	
14692.00	91.110	1.930	5596.56	9022.81	9018.46	280.46	3.20	
14786.00	91.140	1.370	5594.72	9116.79	9112.41	283.17	0.60	
14880.00	90.770	1.180	5593.15	9210.77	9206.37	285.26	0.44	
14975.00	90.800	0.180	5591.85	9305.75	9301.35	286.39	1.05	
15070.00	89.290	1.080	5591.78	9400.73	9396.34	287.43	1.85	
15163.00	89.450	359.430	5592.80	9493.69	9489.33	287.85	1.78	
15257.00	88.670	358.080	5594.34	9587.56	9583.30	285.80	1.66	
15352.00	88.490	2.120	5596.70	9682.47	9678.25	285.97	4.26	
15446.00	88.240	1.950	5599.38	9776.43	9772.15	289.31	0.32	
15540.00	90.220	2.550	5600.64	9870.41	9866.06	293.00	2.20	
15634.00	92.430	1.770	5598.47	9964.38	9959.96	296.54	2.49	
15788.00	92.560	1.310	5591.76	10118.23	10113.76	300.67	0.31	Last BHI MWD Survey (134'FNL & 1481'FEL, SEC.24)
15835.00	92.560	1.310	5589.66	10165.18	10160.70	301.75	0.00	Projection to Bit (88'FNL & 1480'FEL, SEC.24)



Actual Wellpath Report

RAZOR #250-2412 AWP

Page 8 of 10



REFERENCE WELLPATH IDENTIFICATION

Operator	WHITING OIL & GAS CORPORATION	Slot	SLOT#11 RAZOR #250-2412 (355'FSL & 1920'FEL SEC 25)
Area	COLORADO	Well	RAZOR #250-2412
Field	WELD COUNTY	Wellbore	RAZOR #250-2412 AWB
Facility	SEC.25-T10N-R58W		

HOLE & CASING SECTIONS - Ref Wellbore: RAZOR #250-2412 AWB Ref Wellpath: RAZOR #250-2412 AWP

String/Diameter	Start MD [ft]	End MD [ft]	Interval [ft]	Start TVD [ft]	End TVD [ft]	Start N/S [ft]	Start E/W [ft]	End N/S [ft]	End E/W [ft]
16in Conductor	21.00	101.00	80.00	21.00	101.00	0.00	0.00	-0.07	0.28
13.5in Open Hole	101.00	2110.00	2009.00	101.00	2100.93	-0.07	0.28	-138.91	113.72
9.625in Casing Surface	21.00	2101.00	2080.00	21.00	2091.98	0.00	0.00	-138.18	113.10
8.5in Open Hole	2110.00	15835.00	13725.00	2100.93	5589.66	-138.91	113.72	10160.70	301.75

TARGETS

Name	TVD [ft]	North [ft]	East [ft]	Grid East [US ft]	Grid North [US ft]	Latitude	Longitude	Shape
RAZOR #25M PAD SECTION 24	23.00	71.06	-3258.39	3464569.07	1540014.61	40°48'13.160"N	103°49'18.690"W	polygon
RAZOR #25M PAD SECTION 25	23.00	71.06	-3258.39	3464569.07	1540014.61	40°48'13.160"N	103°49'18.690"W	polygon
RAZOR #250-2412 BHL REV-1 ON PLAT (NIO B, 100'FNL & 1485'FEL SEC 24)	5596.00	10147.87	296.72	3467931.52	1550157.34	40°49'52.730"N	103°48'32.460"W	point
RAZOR #250-2412 TOP OF PRODUCING (610'FSL & 1623'FEL SEC 25)	5596.00	259.09	289.15	3468112.40	1540270.20	40°48'15.020"N	103°48'32.560"W	point
RAZOR #250-2412 BHL REV-2 ON PLAT (NIO B, 100'FNL & 1485'FEL SEC 24)	5615.00	10147.87	296.72	3467931.52	1550157.34	40°49'52.730"N	103°48'32.460"W	point
RAZOR #25M PAD HARDLINES 100' N/E/W & 600' S	5740.00	71.06	-3258.39	3464569.07	1540014.61	40°48'13.160"N	103°49'18.690"W	polygon



Actual Wellpath Report

RAZOR #250-2412 AWP

Page 9 of 10



REFERENCE WELLPATH IDENTIFICATION

Operator	WHITING OIL & GAS CORPORATION	Slot	SLOT#11 RAZOR #250-2412 (355'FSL & 1920'FEL SEC 25)
Area	COLORADO	Well	RAZOR #250-2412
Field	WELD COUNTY	Wellbore	RAZOR #250-2412 AWB
Facility	SEC.25-T10N-R58W		

WELLPATH COMPOSITION - Ref Wellbore: RAZOR #250-2412 AWB Ref Wellpath: RAZOR #250-2412 AWP

Start MD [ft]	End MD [ft]	Positional Uncertainty Model	Log Name/Comment	Wellbore
21.00	2057.00	Custom BHI NaviTrak (IFR1, Standard Rotating, SAG) (Rockies 0.03Gt model)	BHI NAVITRAK MWD, ROCKIES GT, SURCON IRF & SAG <146-2057>	RAZOR #250-2412 AWB
2057.00	15788.00	Custom BHI NaviTrak (IFR1, Standard Rotating, SAG) (Rockies 0.03Gt model)	BHI NAVITRAK MWD, ROCKIES GT, SURCON IFR & SAG 8 1/2" MONO <2119-15788>	RAZOR #250-2412 AWB
15788.00	15835.00	Blind Drilling (std)	Projection to bit	RAZOR #250-2412 AWB



Actual Wellpath Report

RAZOR #250-2412 AWP

Page 10 of 10



REFERENCE WELLPATH IDENTIFICATION

Operator	WHITING OIL & GAS CORPORATION	Slot	SLOT#11 RAZOR #250-2412 (355'FSL & 1920'FEL SEC 25)
Area	COLORADO	Well	RAZOR #250-2412
Field	WELD COUNTY	Wellbore	RAZOR #250-2412 AWB
Facility	SEC.25-T10N-R58W		

WELLPATH COMMENTS

MD [ft]	Inclination [°]	Azimuth [°]	TVD [ft]	Comment
5821.00	70.960	355.324	5572.13	Bottom Marker Joint (512'FSL & 1613'FEL, SEC.25)
5917.00	76.824	359.021	5598.61	Crossed 600' South Hardline (604'FSL & 1618'FEL, SEC.25)
15788.00	92.560	1.310	5591.76	Last BHI MWD Survey (134'FNL & 1481'FEL, SEC.24)
15835.00	92.560	1.310	5589.66	Projection to Bit (88'FNL & 1480'FEL, SEC.24)