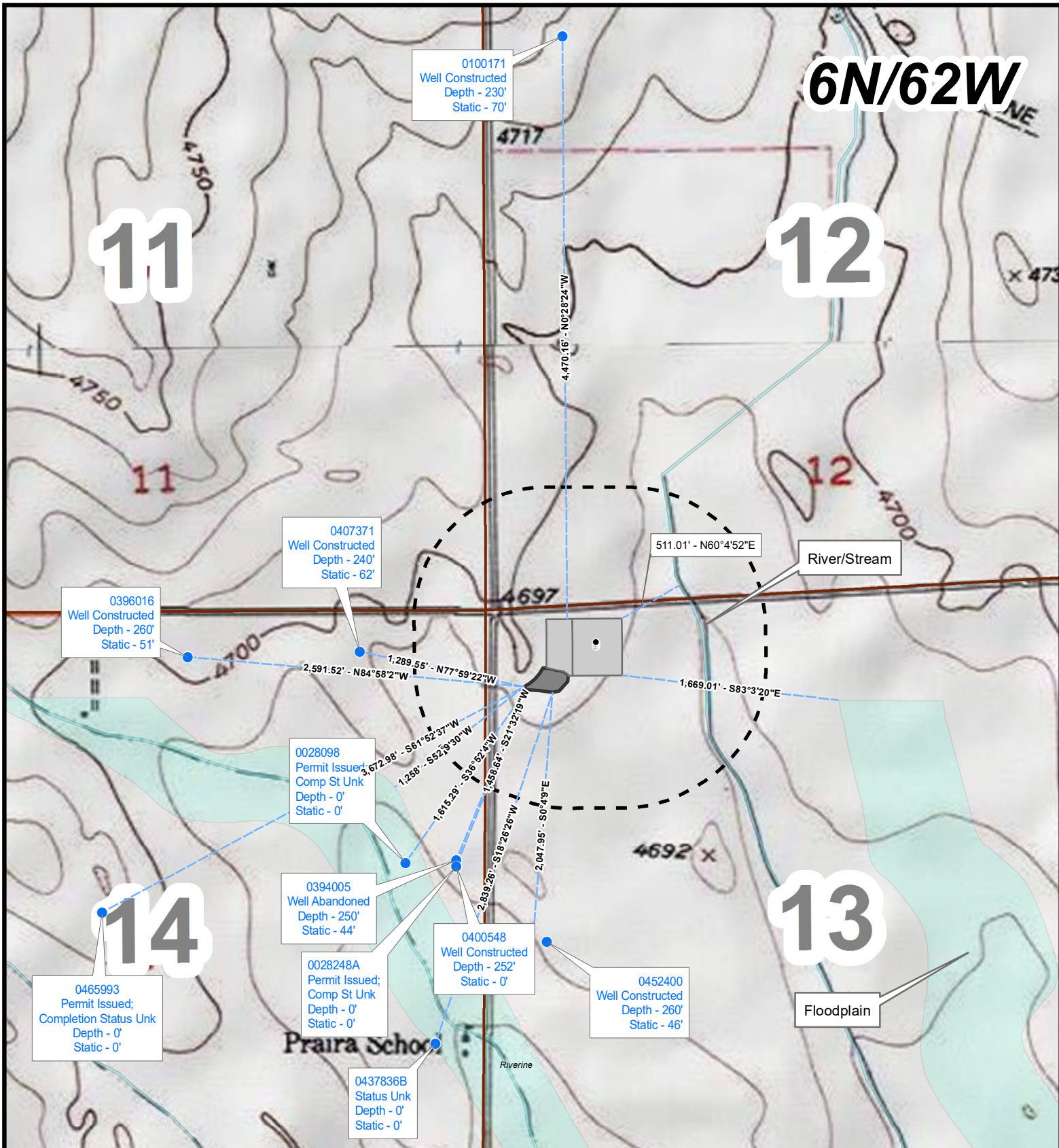


11

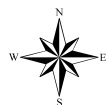
12

6N/62W



Bill Barrett Corporation

Hydrology Map
Bolin 6-62-13_24 NWNW
NWNW, Section 13, T6N, R62W
Weld County, Colorado



Legend

- Surface Hole Location
- Water Wells (CDWR)
- Water Distance Line
- 1,000' Buffer
- Pad Location
- As Built (Reclaimed)
- FEMA Floodplain (2/29/2016)

CO Wetlands (Type)

- Freshwater Emergent Wetland
- Riverine

0 500 1,000 2,000 Feet