

May 2, 2007

Mr. Paul D. Schneider
Staff Environmental & Regulatory Analyst
Kerr-McGee Oil & Gas Onshore LP
1999 Broadway, Suite 3700
Denver, Colorado 80202

RE: Kerr-McGee Oil & Gas Onshore LP 2006 Annual Project Summary

Dear Mr. Schneider:

LT Environmental, Inc. (LTE), under contract to Kerr-McGee Oil & Gas Onshore LP (KM), is pleased to provide you with a copy of the 2006 Annual Project Summary. This 2006 Annual Project Summary consists of Table 1 Assessment/Remediation Project Inventory, which provides the individual site incident date, the Colorado Oil and Gas Conservation Commission (COGCC) Remediation Number, well name and site status. Attached are site summaries listed by the incident date shown on Table 1 and arranged from the oldest release to the most recent releases that occurred during 2006.

Each site summary provides the current number of groundwater wells; assessment of the extent and magnitude of the petroleum hydrocarbon release; additional investigation activities that were conducted during 2006; review of the groundwater analytical data with respect to the Colorado Groundwater Quality Standards (CGWQS); and recommendations for no further action (NFA), ongoing quarterly groundwater monitoring, groundwater monitoring well reduction and/or additional soil and groundwater assessment activities to be conducted during 2007. Site maps (Figure 1) and groundwater analytical and field summary tables (Table 1) follow each of the site summary sheets. The 2006 analytical reports will also be submitted as pdf files and the analytical data will be submitted as a Microsoft Access Database.

Based on review of the 2006 Annual Project Summary Report and/or review of the first and second 2007 quarterly groundwater data a number of sites warrant NFA status. These sites show the groundwater benzene, toluene, ethylbenzene and xylenes (BTEX) concentrations to be below the CGWQS for three or more quarterly groundwater sampling events. A list of the sites that NFA status is being requested for are provided below:

- Raisley 11-34 #1 (Remediation No. 488)
- Wass 1, 2, 3X (Remediation No. 631)
- Clack 1-2/ Olson 2-2 (Remediation No. 759)



RECEIVED

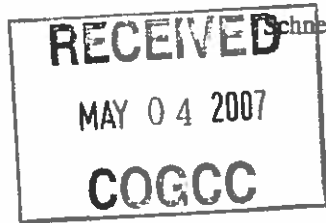
MAY 04 2007

COGCC

- HSR-12-24/ HSR-Richmon 4-24/ HSR-Wiseman (Remediation No. 1694)
- Coulter Smith #C-1 (Remediation No. 1702)
- Sun & Soil 1&2-14 (Remediation No. 1792)
- Camp 13-19/ Platteville 22 & 23-19 (Remediation No. ³²¹⁰~~3270~~)
- HSR-Burchfield 11-21/ HSR-B/R "B" 13 & 14-21 (Remediation No. 3367)
- Magness 43-25 (Remediation No. 3385)
- UPRR 38 Pan Am "W" # 1 (Remediation No. 3619)
- UPRR 50 Pan Am "F" True #1 (Remediation No. 3674)
- Abramson 5-23 (Remediation No. 3693)
- HSR-Acord 11, 14-29 (Remediation No. 3695)
- UPRR 42 Pan Am N True #1 (Remediation No. 3731)
- HSR-Heimark 6-2 (Remediation No. 3789)
- Miller Feedlots Unit No. 1 (Remediation No. 3791)

Based on review of the 2006 Annual Project Summary Report a number of sites warrant groundwater monitoring well reduction. These sites show the BTEX concentrations to be below the CGWQS for three or more quarterly groundwater sampling events in one or more groundwater monitoring wells. A list of the sites and associated groundwater monitoring wells that well reduction is being requested for are provided below:

- HSR-Vasser 8-30/ HSR-Schreiber 1-30 (MW05, MW06 and MW07)
- HSR-Bell 4-16A (MW08 and MW10)
- HSR-Thorson 9-27/ HSR-Moser 10-27 (MW04 and MW05)
- HSR-Cahill 2-16/ HSR-Cantwell 7-16A (MW12, MW13 and MW15)
- HSR-Barron 15-35/ HSR-Davis 16-35/ HSR-Sharkey 8, 9-35 (MW03 through MW07)
- Kelly GU #1&2, Cannon Land 1&7-18 (MW02, MW03 and MW08)



Schneider, P.
Page 3

- HSR-Guinan 9-15/HSR-Wolf 10-15A (MW03, MW07, MW08, MW09, MW12, MW13 and MW17)
- UPRR 62 Pan Am D #1/Winden 12-15A (MW05, MW08, MW09, MW12 and MW13)
- Rankin GU #2/HSR-Sekich 3, 4, 5, 6-19 (MW05A, MW06A and RC02)
- Bacon #1 (MW05, MW08, MW09, MW10, MW12, MW17, MW18 and MW19)
- Keith Carter GU #1 (MW03, MW04 and MW05)
- Pesco 1-9 (MW20 and MW21)
- HSR-Heintzelman 1-32 (MW07, MW08 and MW09)

Please contact me at (303) 433-9788 if you have any questions regarding this 2006 Annual Project Summary or require additional information.

Sincerely,

LT ENVIRONMENTAL, INC.

John E. Cocroft
Senior Hydrogeologist/Project Manager

Attachments

cc: Randall Ferguson (COGCC)

TABLE -1
2006 ASSESSMENT/REMEDATION PROJECT INVENTORY

INCIDENT DATE	Remed. No.	WELL NAME	STATUS	FORM 27 SUBMITTED	NFA PROPOSED	NFA DATE
8/9/1993		UPRR 38 Pan Am G #1	ACTIVE	NO	NO	
5/20/1994	205	Saratoga #1	ACTIVE	YES	NO	---
2/7/1999	489	HSR-Vandlen 2-20/ HSR-Hinde 7-20/ HSR-Kristal 3-20/ HSR-Peck 6-20	ACTIVE	YES	NO	Apr-05
4/18/1999	299	Bigfoot 14-12	ACTIVE	YES	NO	---
12/22/1999	325	Rankin GU #2/ HSR-Sekich 3, 4, 5, 6-19	ACTIVE	YES	NO	---
11/5/1999	488	Raisley 11-34 #1	ACTIVE	YES	YES	---
1/13/2000	326	1415 Corporation "D" No. 1	ACTIVE	YES	NO	---
4/6/2000	474	Berry #1/ Kurtz #1	ACTIVE	YES	NO	---
4/12/2000	473	Alleley 31-34 #1	ACTIVE	YES	NO	---
6/25/2000	631	Wass 1, 2, 3X	ACTIVE	YES	YES	---
8/21/2000	634	HSR-Josh-Hurl 12-32/ HSR-Tullberg 13-32	ACTIVE	YES	NO	---
11/13/2000	676	Pesco 1-9	ACTIVE	YES	NO	---
11/22/2000	736	HSR-Gibler 11, 14-3A/ PryMac GU No.1	ACTIVE	YES	NO	---
1/18/2001	661	Pehr PU #1	ACTIVE	YES	NO	---
7/9/2001	759	HSR-Clack 1-2A/ HSR-Olsen 2-2	ACTIVE	YES	YES	---
9/7/2001	723	Fort St. Vrain-4	ACTIVE	YES	NO	---
9/26/2001	1503	Sharkey 8, 9-35	ACTIVE	YES	NO	---
10/18/2001	1528	Nishimoto 11-36	NFA	YES	YES	Jun-06
10/18/2001	569	John Dittiro GU #1	ACTIVE	YES	NO	---
11/28/01	1507	Derdivanis 3-2/ Helmark 6-2	NFA	YES	YES	Apr-06
12/5/2001	1508	Lezin 14-24	NFA	YES	YES	Jun-06
1/10/2002	325	Sekich (See 12/22/99 Rankin GU #2/ HSR-Sekich 3, 4, 5, 6-19)	ACTIVE	YES	NO	---
2/19/2002	1616	Spaur 1-7	ACTIVE	YES	NO	---
3/13/2002	1530	Kelly Gas Unit #1, #2/ Cannon 1-18/ Cannon Land 7-18/ McPeck 3-18, 2-18A	ACTIVE	YES	NO	---
5/2/2002	1702	Coulter Smith #C-1	ACTIVE	YES	YES	Sold 05
5/24/2002	1618	HSR-Guinan 9-15/ HSR-Wolf 10-15A	ACTIVE	YES	NO	---
6/20/2002	1694	HSR 12-24/ HSR-Richmon 4-24/ HSR-Wiseman 5-24A	ACTIVE	YES	YES	---
11/1/2002	1729	Red Baker 1-11A	NFA	YES	YES	Aug-06
11/1/2002	1730	UPRR 62 Pan AM D #1/ Winden 12-15A	ACTIVE	YES	NO	---
12/4/2002	1731	HSR-Cahill 2-16/ HSR-Cantwell 7-16A	ACTIVE	YES	NO	---
1/22/2003	1770	HSR-Thorson 9-27/ HSR-Moser 10-27	ACTIVE	YES	NO	---
1/28/2003	1752	Peppler 3-36	ACTIVE	YES	NO	---
4/9/2003	3541	Paul Schmidt "B" GU#1	ACTIVE	YES	NO	---
4/10/2003	1772	HSR-Charlene 2-36, 2-36A	NFA	YES	YES	Jul-06
5/9/2003	1792	Sun & Soil 1, 2-14	ACTIVE	YES	YES	---
5/13/2003	1793	Floyd Shaw C Unit #1	ACTIVE	YES	NO	---
5/24/2003	1794	Raymond Preston GU #1	ACTIVE	YES	NO	---
8/18/2003	1795	HSR-Bell 4-16A	ACTIVE	YES	NO	---
8/22/2003	676	Pesco 1-9 (See 11/13/00 Pesco 1-9)	ACTIVE	YES	NO	---
11/13/2003	3320	16-10-075-18-4 Pipeline	ACTIVE	YES	NO	---
12/15/2003	3211	Howard David C #2	ACTIVE	YES	NO	---
12/17/2003	3270	Camp 13-19A/ Platteville 22-19	ACTIVE	YES	YES	---
1/8/2004	3281	HSR-Vasser 8-30/ HSR-Schreiber 1-30	ACTIVE	YES	NO	---
1/8/2004	569	John Dittiro Jr. GU #1 (See 10/18/01 John Dittiro GU #1)	ACTIVE	YES	NO	---



TABLE -1
2006 ASSESSMENT/REMEDATION PROJECT INVENTORY

INCIDENT DATE	Remed. No.	WELL NAME	STATUS	FORM.27 SUBMITTED	NFA PROPOSED	NFA DATE
1/21/2004	3282	Badding #1	ACTIVE	YES	NO	—
1/28/2004	3319	HSR-Scottdale Ranches 13, 14-35	NFA	YES	YES	Apr-06
3/19/2004	3365	Amen #1	NFA	YES	YES	May-06
4/16/2004	1505	HSR-Kristal 3-20/HSR-Peck 6-20 (See 2/7/99 HSR-Vandlen 2-20/ HSR-Hinde 7-20/ HSR-Kristal 3-20/ HSR-Peck 6-20)	ACTIVE	YES	NO	—
4/27/2004	3367	HSR-Burchfield 11-21/ HSR-B/R B 13-21A, 14-21	ACTIVE	YES	YES	—
5/5/2004	3366	HSR-Barron 15-35/ HSR-Davis 16-35/ HSR-Sharkey 8, 9-35 (See 9/26/01 Sharkey 8, 9-35)	ACTIVE	YES	NO	—
6/17/2004	3385	Magness 43-25	ACTIVE	YES	YES	—
6/23/2004	3388	Sarchet #1	ACTIVE	YES	NO	—
6/23/2004	1530	Kelly GU #1&2, Cannon Land 1&7-18 (See 3/13/02 Kelly Gas Unit #1, #2/ Cannon 1-18/ Cannon Land 7-18/ McPeck 3-18, 2-18A)	ACTIVE	YES	NO	—
7/22/2004	3454	Highland 11-20	NFA	YES	YES	Apr-06
8/2/2004	3511	Dorothy Sebold UT True #1	ACTIVE	YES	NO	—
9/15/2004	3586	Valley 66 Unit #2	NFA	YES	YES	Jan-06
11/18/2004	223	Jack Miller #1/ HSR-Miller 1, 2, 8-26A, 7-26	NFA	YES	YES	Feb-06
11/30/2004	3518	Peppler 1-36	ACTIVE	YES	NO	—
12/29/2004	3514	Bacon #1	ACTIVE	YES	NO	—
2/28/2005	3561	CLC GU #1/ Cannon 6-18A/ HSR-Coyle 13-18A	ACTIVE	YES	NO	
2/28/2005	3568	Dos Rios 14-34	ACTIVE	YES	NO	
6/6/2005	3569	UPRR 42 Pan Am AQ 1/ Mayer Federal 14-17/ McCrumb Federal 10-17A	ACTIVE	YES	NO	
7/5/2005	3635	HSR-Layng 4-23/ HSR-Abramson 5-23	ACTIVE	YES	NO	
7/7/2005	3696	HSR-Brady 15-25/ HSR-Krandel 9-25	ACTIVE	YES	NO	
7/7/2005	3560	HSR-Dinkelspiel 3-22A/ HSR-M Christine 2-22	NFA	YES	YES	Aug-06
8/2/2005	3562	HSR-Blank 15-5/ HSR-Cabral 16-5	ACTIVE	YES	YES	
8/3/2005	3559	Anderson 12-27/ Bohlender 1-27	ACTIVE	YES	NO	
8/16/2005	3679	Ione Land & Cattle UT 1/ Cannon Federal 11-8	ACTIVE	YES	NO	
8/26/2005	3644	John Martinez GU #1	ACTIVE	YES	NO	
8/26/2005	3643	Keith Carter GU #1	ACTIVE	YES	NO	
10/17/2005	3619	UPRR 38 Pan Am "W" #1	ACTIVE	YES	YES	
10/18/2005	3616	Devlin 6-35/ Gibbons 3-35/ Vogel 5-35	NFA	YES	YES	Nov-06
10/21/2005	3620	Weber 4-19	NFA	YES	YES	Nov-06
10/28/2005	3601	Olander 1-14/ HSR-Bear 13-14	NFA	YES	YES	Nov-06
11/2/2005	3613	Anderson 41-27/ Bohlender 2-27	ACTIVE	YES	NO	
11/14/2005	3672	Cullen Odenbaugh C UT #1/ Stanley Odenbaugh 13-12	ACTIVE	YES	NO	
11/15/2005	3740	Leo F. Sprague Unit 2	ACTIVE	YES	NO	
11/19/2005	3676	HSR-Jones 16-36	ACTIVE	YES	NO	
11/21/2005	3692	Nelson Milton H "I", "K", "L" #1	ACTIVE	YES	NO	
12/12/2005	3674	UPRR 50 Pan Am "F" True #1	ACTIVE	YES	YES	
12/13/2005	3673	Webber UPRR 41-3 #1	ACTIVE	YES	NO	
12/16/2005	3675	HSR-Heintzelman 1-32	ACTIVE	YES	NO	



**TABLE -1
2006 ASSESSMENT/REMEDATION PROJECT INVENTORY**

INCIDENT DATE	Remed. No.	WELL NAME	STATUS	FORM 27 SUBMITTED	NFA PROPOSED	NFA DATE
1/6/2006	3684	UPRC 9-5K, 9-6K	ACTIVE	YES	NO	
1/21/2006	3695	HSR-Acord 11, 14-29	ACTIVE	YES	YES	
2/3/2006	3785	Camp 1, 2, 7, 8-24	ACTIVE	YES	NO	
2/23/2006	3789	HSR-Heimark 6-2	ACTIVE	YES	YES	
2/23/2006	3731	UPRR 42 Pan Am N True #1	ACTIVE	YES	YES	
4/4/2006	3693	Abramson 5-23	ACTIVE	YES	YES	
5/1/2006	3729	HSR-Leonard 12-22A/ HSR-Anderson 11-22A	ACTIVE	YES	YES	
5/3/2006	3732	Hazel McHale B #1	ACTIVE	YES	NO	
5/5/2006	3619	UPRR 38 Pan Am "W" #1	ACTIVE	YES	YES	
5/8/2006	3790	Merle McHale GU 1/ Vogl 6-5/ Rhoades 1, 8-5/ McHale 7-5	ACTIVE	YES	NO	
5/18/2006	3734	HSR-Viola 9-36 "A", 16-36	ACTIVE	YES	YES	
5/19/2006	3798	Gordon Red V 10-1, 4D, 8, 9, 10, 15	ACTIVE	YES	NO	
5/24/2006	3748	Carl H Adler "B" 1	ACTIVE	YES	NO	
5/30/2006	3791	Miller Feedlots Unit #1	ACTIVE	YES	YES	
6/13/2006	3730	Ralph Vincent Unit #1, 1-2A/ Wittemeyer 2-2/ Wittemeyer 7, 8-2A	ACTIVE	YES	NO	
6/16/2006		Clark Francis D UT "B" #2/ Norden 15-14A/ Highum Founders #1	ACTIVE	YES	NO	
6/22/2006	3879	Edwards William GU #1	ACTIVE	YES	NO	
7/6/2006	3878	Gordon Turkey Farms "B" #2/ Strear 3, 4, 5, 11-10	ACTIVE	YES	NO	
7/12/2006	3870	HSR-Charlton 8-20/ HSR-Dougery 1-20	ACTIVE	YES	NO	
	3872	HSR-Karich 8-32	ACTIVE	YES	NO	
8/21/2006	3749	UPRR 41 Pan Am K #2	ACTIVE	YES	NO	
9/18/2006	3871	HSR-Knox 9-3	ACTIVE	YES	NO	
10/6/2006		Fritzler UPRR 31-31	ACTIVE	NO	NO	
10/10/2006		HSR-Cowan 5-35	ACTIVE	NO	NO	
11/21/2006	3865	Ft. St. Vrain 13X	ACTIVE	YES	NO	
12/2/2006		Eachus 4, 5-23	ACTIVE	NO	NO	
12/4/2006		Ft. St. Vrain 3, 9/ PSC 14, 23-9, 14-9-5Y	ACTIVE	NO	NO	
12/11/2006		Anderson 3-34	ACTIVE	NO	NO	
12/11/2006		James N. Mathisen B #2/HSR-Myrna 15-12A	ACTIVE	NO	NO	

2006 PROJECT SUMMARY

**UPRR 38 PAN AM G #1
(SWSW 3-T2N-R66W)**

**Incident Date: 8/9/1993
Remediation No.**

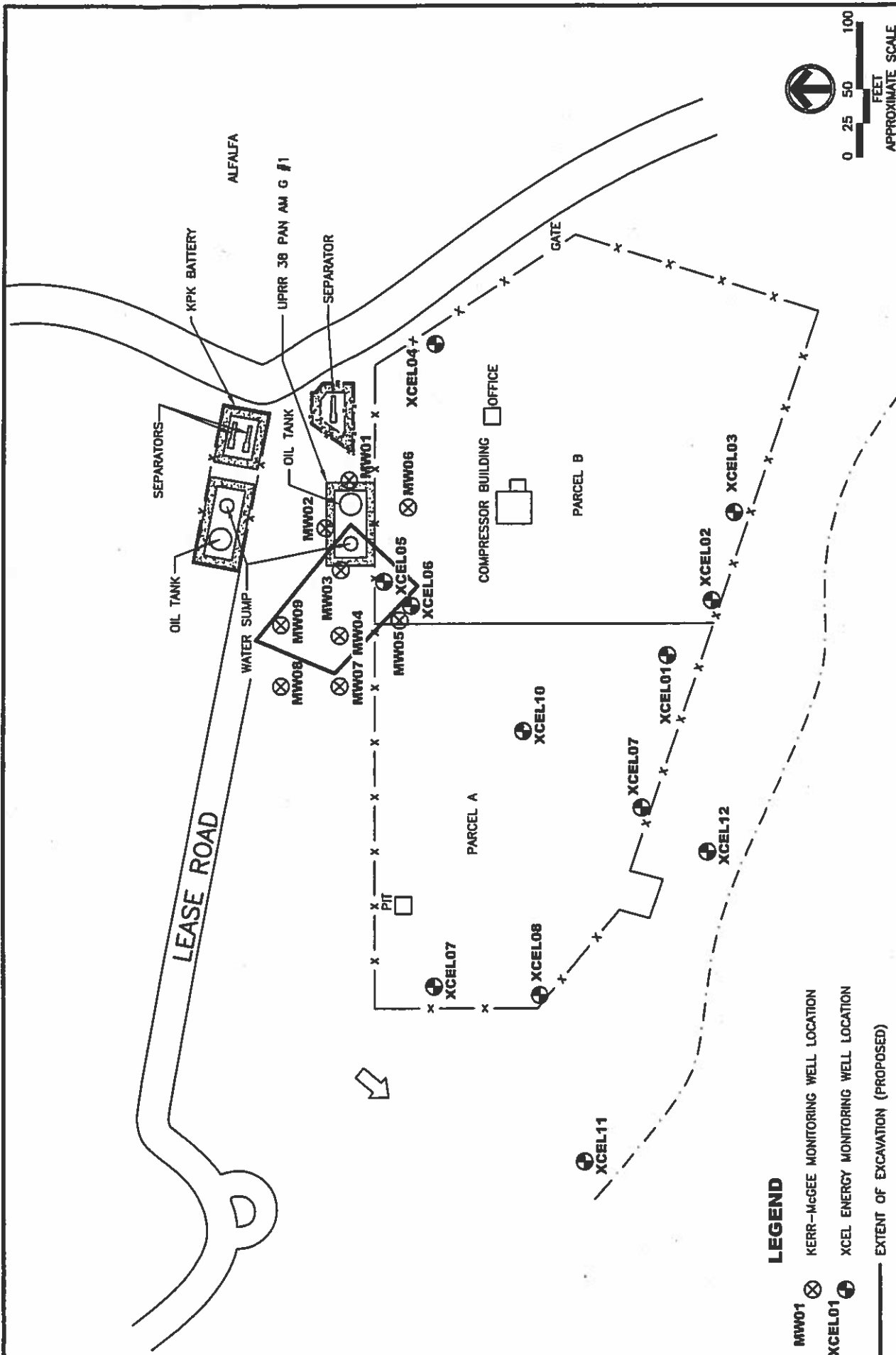
Groundwater monitoring activities were conducted on a quarterly basis at the site during 2006. Based on data collected during 2006, benzene was detected above the Colorado Groundwater Quality Standards (CGWQS) in monitoring wells MW03, MW04, MW05, MW09 and XCEL05. The quarterly monitoring event conducted in February 2006 sampled all of the site wells, including the new wells MW08 through MW10. These results showed benzene was detected above the CGWQS in the existing monitoring wells MW03, MW04 and XCEL05 and in the new well MW09. Based on these data, it appears that the extent of groundwater impact has not been defined north of MW09.

Additional groundwater assessment activities will be conducted to determine the extent and magnitude of groundwater impacts north and west of MW09 during 2007. Furthermore, remediation options are currently being evaluated to remove the petroleum impacted soil and/or groundwater and will be proposed to the COGCC for approval during 2007. Excavation of impacted soils will allow for the removal the petroleum hydrocarbon source area that is believed to be associated with the tank battery. Figure 1 shows the proposed extent of the excavation with respect to the tank battery.

Groundwater monitoring activities will continue on a quarterly basis at this site in 2007.

A site map (Figure 1) and groundwater analytical and field results summary table (Table 1) are attached.





LEGEND

- MW01 KERR-McGEE MONITORING WELL LOCATION
- XCEL01 XCEL ENERGY MONITORING WELL LOCATION
- EXTENT OF EXCAVATION (PROPOSED)
- BERM
- FENCE
- DITCH
- ESTIMATED GROUNDWATER FLOW DIRECTION

**FIGURE 1
SITE MAP**

UPRR 38 PAN AM G #1
SWSW SEC 3-T2N-R66W
WELD COUNTY, CO
KERR-McGEE OIL & GAS ONSHORE LP



TABLE
GROUNDWATER ANALYTICAL AND FIELD RESULTS
UPRR 38 PAN AM G #1
KERR-McGEE OIL & GAS ONSHORE LP

Well Name	Date	Benzene (ug/L)	Toluene (ug/L)	Ethylbenzene (ug/L)	Xylenes (ug/L)	Depth Water/ (Depth Product) (ft bgs)
MW01	02/25/2005	<1.0	<1.0	<1.0	<3.0	7.58
	05/12/2005	<1.0	<1.0	<1.0	<2.0	7.40
	08/09/2005	<1.0	<1.0	<1.0	<2.0	7.22
	11/15/2005	<1.0	<1.0	<1.0	<2.0	5.90
	02/25/2006	<1.0	<1.0	<1.0	<1.0	7.03
	05/15/2006	<1.0	<1.0	<1.0	<1.0	6.20
	08/16/2006	<1.0	<1.0	<1.0	<1.0	8.95
	11/07/2006	<1.0	<1.0	<1.0	<1.0	7.92
MW02	02/25/2005	<1.0	<1.0	<1.0	<3.0	7.60
	05/12/2005	<1.0	<1.0	<1.0	<2.0	7.65
	08/09/2005	<1.0	<1.0	<1.0	<2.0	8.05
	11/15/2005	<1.0	<1.0	<1.0	<2.0	6.75
	02/25/2006	<1.0	<1.0	<1.0	<1.0	7.15
	05/15/2006	<1.0	<1.0	<1.0	<1.0	6.07
	08/16/2006	<1.0	<1.0	2.6	<1.0	8.83
	11/07/2006	<1.0	<1.0	<1.0	<1.0	8.11
MW03	02/25/2005	340	<1.0	780	5042	8.86
	05/12/2005	170	<1.0	280	5.7	7.95
	08/09/2005	550	<1.0	420	2000	8.40
	11/15/2005	160	<1.0	240	260	7.12
	02/25/2006	220	<1.0	170	66	7.46
	05/15/2006	190	<1.0	31	6.4	6.44
	08/16/2006	170	<1.0	21	110	8.91
	11/07/2006	190	<1.0	79	110	8.55
MW04	08/09/2005	430	<1.0	290	3000	7.65
	11/15/2005	Dry - Not Sampled				Dry
	12/05/2005	300	<1.0	210	7.0	NM
	02/25/2006	<1.0	<1.0	<1.0	<1.0	7.75
	05/15/2006	<1.0	<1.0	<1.0	<1.0	7.60
	08/22/2006	<1.0	<1.0	<1.0	<1.0	NM
	11/07/2006	350	<1.0	190	830	9.93
MW05	08/09/2005	<1.0	<1.0	<1.0	<2.0	9.80
	11/15/2005	4.0	<1.0	25	4.5	6.59
	02/25/2006	3.8	<1.0	<1.0	<1.0	6.38
	05/15/2006	4.8	<1.0	<1.0	<1.0	6.24
	08/16/2006	5.6	<1.0	<1.0	<1.0	8.39
	11/07/2006	<1.0	<1.0	<1.0	<1.0	8.23
MW06	08/09/2005	2.1	<1.0	2.1	23	6.28
	11/15/2005	<1.0	<1.0	<1.0	<2.0	4.00
	02/25/2006	<1.0	<1.0	<1.0	<1.0	5.81
	05/15/2006	<1.0	<1.0	<1.0	<1.0	5.82
	08/16/2006	<1.0	<1.0	<1.0	<1.0	8.75



TABLE (Continued)
GROUNDWATER ANALYTICAL AND FIELD RESULTS
UPRR 38 PAN AM G #1
KERR-McGEE OIL & GAS ONSHORE LP

Well Name	Date	Benzene (ug/L)	Toluene (ug/L)	Ethylbenzene (ug/L)	Xylenes (ug/L)	Depth Water/ (Depth Product) (ft bgs)
MW06	11/07/2006	<1.0	<1.0	<1.0	<1.0	7.40
MW07	02/25/2006	<1.0	<1.0	<1.0	<1.0	7.34
	05/15/2006	<1.0	<1.0	<1.0	<1.0	7.48
	08/16/2006	<1.0	<1.0	<1.0	<1.0	10.33
	11/07/2006	<1.0	<1.0	<1.0	<1.0	9.40
MW08	02/25/2006	<1.0	<1.0	<1.0	<1.0	7.90
	05/15/2006	<1.0	<1.0	<1.0	<1.0	7.80
	08/16/2006	<1.0	<1.0	<1.0	<1.0	10.69
	11/07/2006	<1.0	<1.0	<1.0	<1.0	9.52
MW09	02/25/2006	89	7.0	120	420	7.05
	05/15/2006	59	<1.0	81	290	7.21
	08/16/2006	40	<1.0	230	780	9.65
	11/07/2006	36	<1.0	86	420	9.79
XCEL05	02/25/2005	730	<3.0	140	179.3	NM
	05/12/2005	330	<1.0	52	67	NM
	08/18/2005	97	<1.0	170	190	7.61
	11/15/2005	320	<1.0	290	920	NM
	02/25/2006	230	<1.0	240	840	NM
	05/15/2006	<1.0	<1.0	<1.0	<1.0	NM
	08/28/2006	310	<1.0	260	840	NM
	11/07/2006	190	<1.0	300	460	NM
XCEL06	02/25/2005	2.0	<1.0	<1.0	3.0	NM
	05/12/2005	2.5	<1.0	1.1	2.5	NM
	08/18/2005	<1.0	<1.0	<1.0	<2.0	7.36
	11/15/2005	<1.0	<1.0	<1.0	<2.0	NM
	02/25/2006	<1.0	<1.0	<1.0	<1.0	NM
	05/15/2006	<1.0	<1.0	<1.0	<1.0	NM
	08/28/2006	<1.0	<1.0	<1.0	<1.0	NM
	11/07/2006	<1.0	<1.0	<1.0	<1.0	NM
Colo GW Quality Standards		5	1000	680	10000	

Notes: < - less than
ug/L - micrograms per Liter
NA - Not Analyzed/Not Available

GW - Groundwater
Bold numbers indicate result equaled or exceeded standard.
ND - Not Detected NM - Not Measured ft bgs - feet below ground surface

