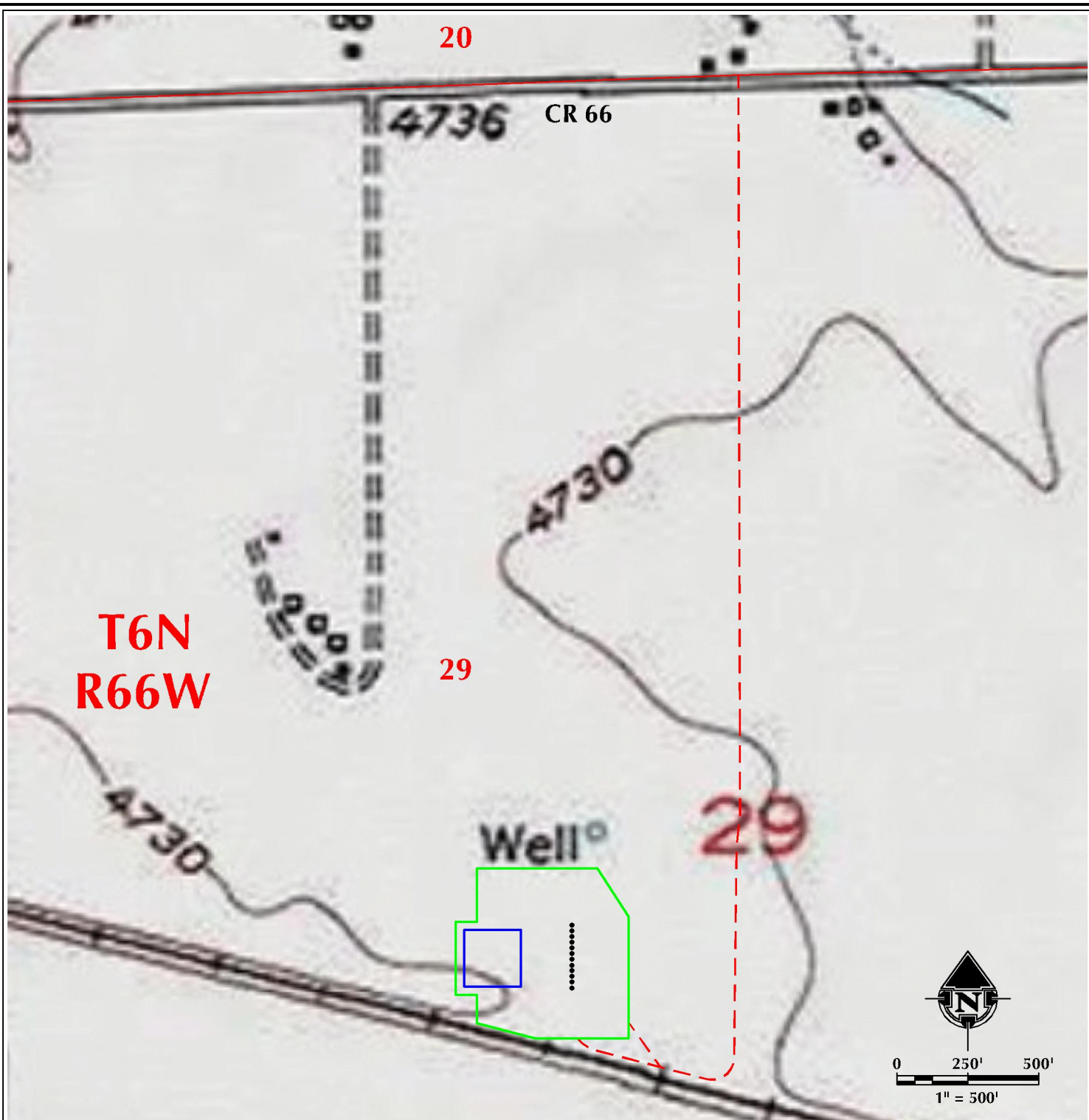


K:\SYNERGY RESOURCES\2016_81_GOETZEL_T6N_R66W_SEC_29\DWG\GOETZEL_25-29\GOETZEL_SOUTH.dwg, 9/29/2016 7:41:40 A M, jpk



LEGEND

- | | | |
|-------------------|--|--|
| ● PROPOSED WELL | DISTURBANCE AREA | ROAD - IMPROVED - EXISTING |
| - - - ACCESS ROAD | PROPOSED FACILITY | ROAD - PRIMITIVE - EXISTING |
| - SECTION LINE | MLVT AREA | ROAD - HIGHWAY - EXISTING |

PAD - GOETZEL 25-29

ACCESS ROAD MAP
GOETZEL 32C-30-M, GOETZEL 32N-30B-M, GOETZEL 12N-30C-M,
GOETZEL 12N-30A-M, GOETZEL 12N-30B-M, GOETZEL 33C-30-M,
GOETZEL 33N-30B-M, GOETZEL 13N-30C-M, GOETZEL 13N-30A-M,
GOETZEL 13C-30-M, GOETZEL 34N-30C-M & GOETZEL 34C-30-M
LOCATED IN SECTION 29, T6N, R66W, 6TH P.M.
WELD COUNTY, COLORADO

 **SYNERGY**
RESOURCES CORPORATION
1625 Broadway, Suite 300
Denver, Colorado 80202



CONSULTING, LLC

SHERIDAN OFFICE 1095 Saberton Avenue Sheridan, Wyoming 82801 Phone 307-674-0609	LOVELAND OFFICE 1635 Foxtrail Drive, Suite 204 Loveland, Colorado 80538 Phone 970-776-4331
---	--

SCALE:	1" = 500ft	NAD83 CO-Nft
DRAWN:	SRS	DATE: 9/15/16
REVISED:	CDJ	DATE: 9/28/16



PICTURE OF GOETZEL 25-29 ACCESS ROAD - CAMERA ANGLE NORTH



PICTURE OF GOETZEL 25-29 ACCESS ROAD - CAMERA ANGLE EAST

WELL PAD - GOETZEL 25-29

ACCESS ROAD PICTURES

GOETZEL 32C-30-M, GOETZEL 32N-30B-M, GOETZEL 12N-30C-M,
GOETZEL 12N-30A-M, GOETZEL 12N-30B-M, GOETZEL 33C-30-M,
GOETZEL 33N-30B-M, GOETZEL 13N-30C-M, GOETZEL 13N-30A-M,
GOETZEL 13C-30-M, GOETZEL 34N-30C-M & GOETZEL 34C-30-M
LOCATED IN SECTION 29, T6N, R66W, 6TH P.M.
WELD COUNTY, COLORADO



1625 Broadway, Suite 300
Denver, Colorado 80202



CONSULTING, LLC

SHERIDAN OFFICE
1095 Saberton Avenue
Sheridan, Wyoming 82801
Phone 307-674-0609

LOVELAND OFFICE
1635 Foxtrail Drive, Suite 204
Loveland, Colorado 80538
Phone 970-776-4331

SCALE: NTS DATE: 9/20/16

REVISED: CDJ 9/28/16

SHEET NO:

1

1 OF 2



PICTURE OF GOETZEL 25-29 ACCESS ROAD - CAMERA ANGLE SOUTH



PICTURE OF GOETZEL 25-29 ACCESS ROAD - CAMERA ANGLE WEST

WELL PAD - GOETZEL 25-29

ACCESS ROAD PICTURES

GOETZEL 32C-30-M, GOETZEL 32N-30B-M, GOETZEL 12N-30C-M,
GOETZEL 12N-30A-M, GOETZEL 12N-30B-M, GOETZEL 33C-30-M,
GOETZEL 33N-30B-M, GOETZEL 13N-30C-M, GOETZEL 13N-30A-M,
GOETZEL 13C-30-M, GOETZEL 34N-30C-M & GOETZEL 34C-30-M
LOCATED IN SECTION 29, T6N, R66W, 6TH P.M.
WELD COUNTY, COLORADO

 **SYNERGY**
RESOURCES CORPORATION
1625 Broadway, Suite 300
Denver, Colorado 80202



CONSULTING, LLC

SHERIDAN OFFICE
1095 Saberton Avenue
Sheridan, Wyoming 82801
Phone 307-674-0609

LOVELAND OFFICE
1635 Foxtrail Drive, Suite 204
Loveland, Colorado 80538
Phone 970-776-4331

SCALE: NTS DATE: 9/20/16
REVISED: CDJ 9/28/16

SHEET NO:
2 2 OF 2