



December 6, 2016

Colorado Oil and Gas Conservation Commission  
The Chancery Building  
1120 Lincoln Street, Suite 801  
Denver, CO 80203  
Attn: Mr. Matt Lepore, Director

RE: Cherry Knolls West 33-1, Doc # 401145966  
NWSW, Section 33, Township 1 North, Range 65 West, 6<sup>th</sup> P.M.  
Weld County, Colorado

Dear Director:

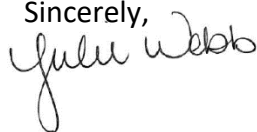
Edge Energy, LLC. ("Edge") is planning to drill the captioned boundary well in accordance with the provisions of COGCC Rule 318A.e.

Edge's proposed wellbore spacing unit consists of the S2N2, N2S2 of Sec. 33, T1N, R65W, creating a 320-acre wellbore spacing unit for the Niobrara formation. Edge is the only working interest owner within the proposed wellbore spacing unit, therefore Edge hereby attests that no notice letters are required under COGCC Rule 318A.e.(5).

Enclosed are copies of the following documents to assist you in your review and approval of Edge's proposed APD for the captioned well:

- Plat illustrating proposed wellbore spacing unit.

Thank you for your attention to the enclosed information. Edge respectfully requests that the COGCC review the enclosed information and approve the Application for Permit to Drill the captioned well.

Sincerely,  


Julie Webb  
Regulatory Analyst  
Edge Energy, LLC

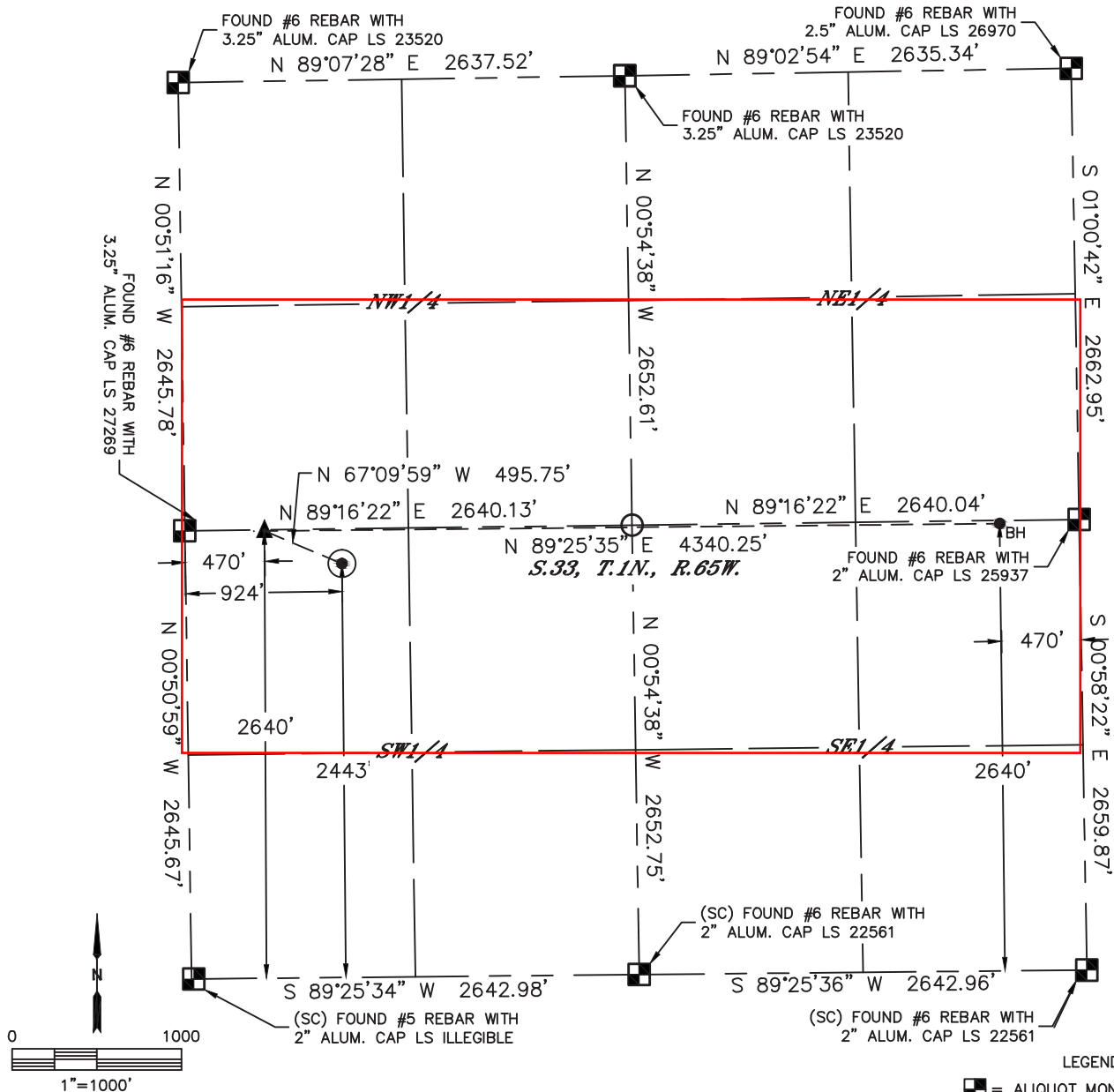


Lat40°, Inc. 6250 W. 10th Street, Unit 2, Greeley, CO 970-515-5294

# WELL LOCATION CERTIFICATE

CHERRY KNOLLS WEST 33-1

SECTION: 33  
TOWNSHIP: 1N  
RANGE: 65W  
6TH. P.M.  
WELD COUNTY, CO



## LEGEND

- = ALIQUOT MONUMENT AS DESCRIBED
- = CALCULATED POSITION
- = SURFACE HOLE LOCATION (SHL)
- ▲ = ENTRY POINT LOCATION (EP)
- BH = BOTTOM HOLE LOCATION (BHL)
- ⊙ = EXISTING WELL
- ⊙ = ABANDONED WELL

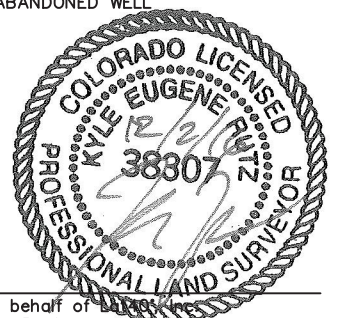
CLIENT: EDGE ENERGY				LANDMAN: ERIK LARSEN			
INSTRUMENT OPERATOR: CASEY KOHOUT				SURVEY DATE: 10/20/2016		SURFACE USE: CROP LAND	
SHL FOOTAGE	SHL LAT °	SHL LONG °	SHL PDOP	SHL ELEV (FT.)	SHL 1/4/1/4	SHL S-T-R	
2443 FSL 924 FWL	40.00724	-104.67515	1.8	5099	NWSW	33-1N-65	

BHL FOOTAGE	BHL LAT °	BHL LONG °	BHL S-T-R	EP LAT °	EP LONG °	EP S-T-R
2640 FSL 470 FEL	40.00779	-104.66128	33-1N-65	40.00778	-104.67677	33-1N-65

## NOTE:

- 1) Bearings shown are Grid Bearings of the Colorado State Plane Coordinate System, North Zone, North American Datum 1983. The lineal dimensions as contained herein are based upon the "U.S. Survey Foot."
- 2) Distances to section lines measured at 90 degrees from said section lines.
- 3) Ground elevations are based on an observed GPS elevation (NAVD 1988 DATUM).
- 4) Latitude and Longitude shown are (NAD 83 DATUM).
- 5) IMPROVEMENTS: See LOCATION DRAWING for all visible improvements within 500' of oil and gas location.
- 6) This map does not represent a boundary survey.

NEAREST CULTURAL ITEMS	
BUILDING	±2157' E
BUILDING UNIT	±2157' E
HIGH OCCUPANCY BUILDING UNIT	5280' +
DESIGNATED OUTSIDE ACTIVITY AREA	5280' +
PUBLIC ROAD (COUNTY ROAD 2)	±2427' S
ABOVE GROUND UTILITY	±981' W
RAILROAD	5280' +
PROPERTY LINE	±205' N



Kyle E. Rutz—On behalf of  
Colorado Licensed Professional  
Land Surveyor No. 38307  
DATE: 12/02/2016  
PROJECT#: 2015117