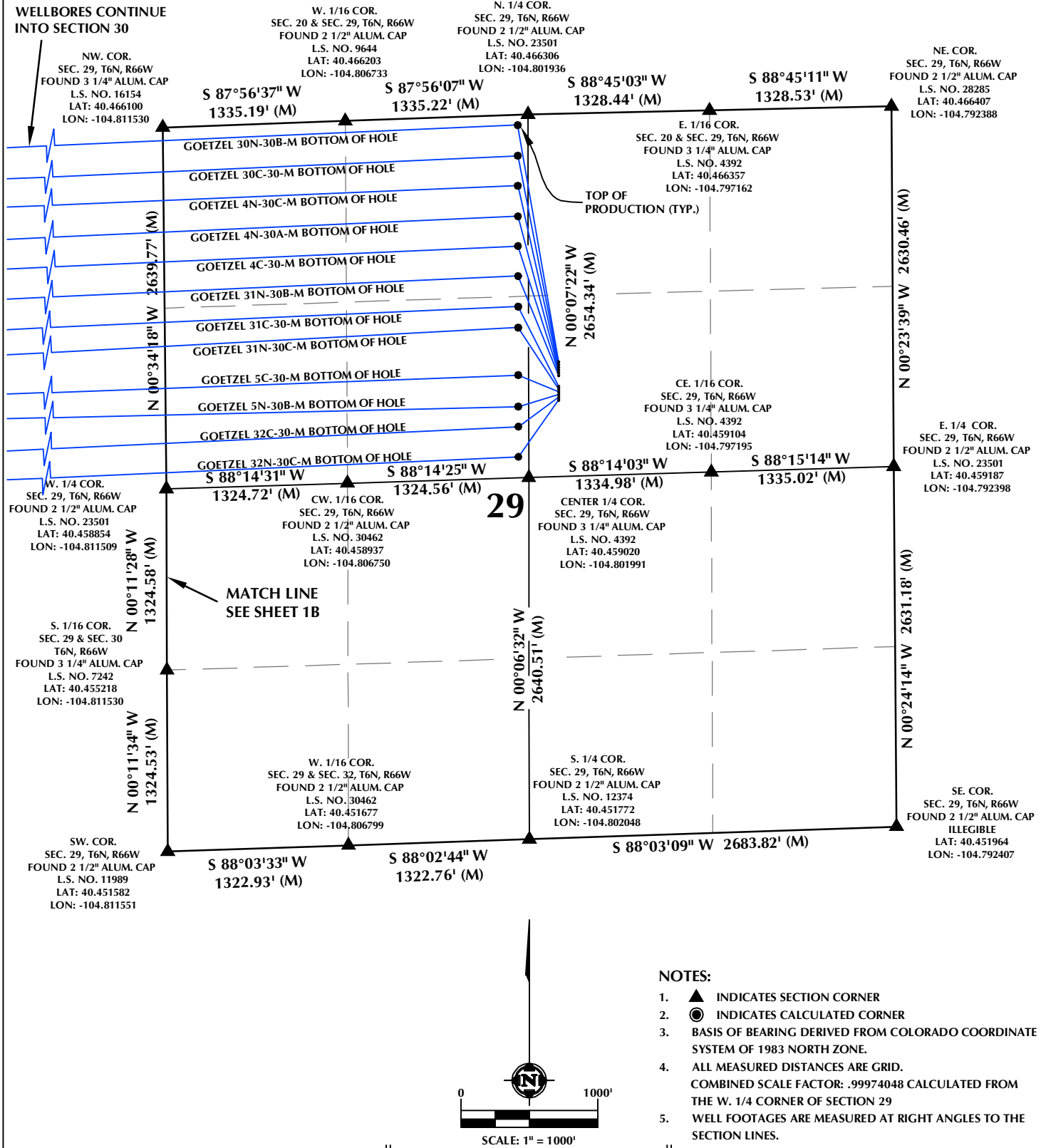


SECTION 29, T6N, R66W



NOTES:

1. ▲ INDICATES SECTION CORNER
2. ● INDICATES CALCULATED CORNER
3. BASIS OF BEARING DERIVED FROM COLORADO COORDINATE SYSTEM OF 1983 NORTH ZONE.
4. ALL MEASURED DISTANCES ARE GRID. COMBINED SCALE FACTOR: .99974048 CALCULATED FROM THE W. 1/4 CORNER OF SECTION 29
5. WELL FOOTAGES ARE MEASURED AT RIGHT ANGLES TO THE SECTION LINES.

WELL PAD - GOETZEL 7-29

MULTI-WELL PLAN
 GOETZEL 30N-30B-M, GOETZEL 30C-30-M,
 GOETZEL 4N-30C-M, GOETZEL 4N-30A-M,
 GOETZEL 4C-30-M, GOETZEL 31N-30B-M,
 GOETZEL 31C-30-M, GOETZEL 31N-30C-M,
 GOETZEL 5C-30-M, GOETZEL 5N-30B-M,
 GOETZEL 32C-30-M & GOETZEL 32N-30C-M
 LOCATED IN SECTIONS 29 & 30
 T6N, R66W, 6TH P.M.
 WELD COUNTY, COLORADO

SYNERGY
 RESOURCES CORPORATION
 1625 Broadway, Suite 300
 Denver, Colorado 80202

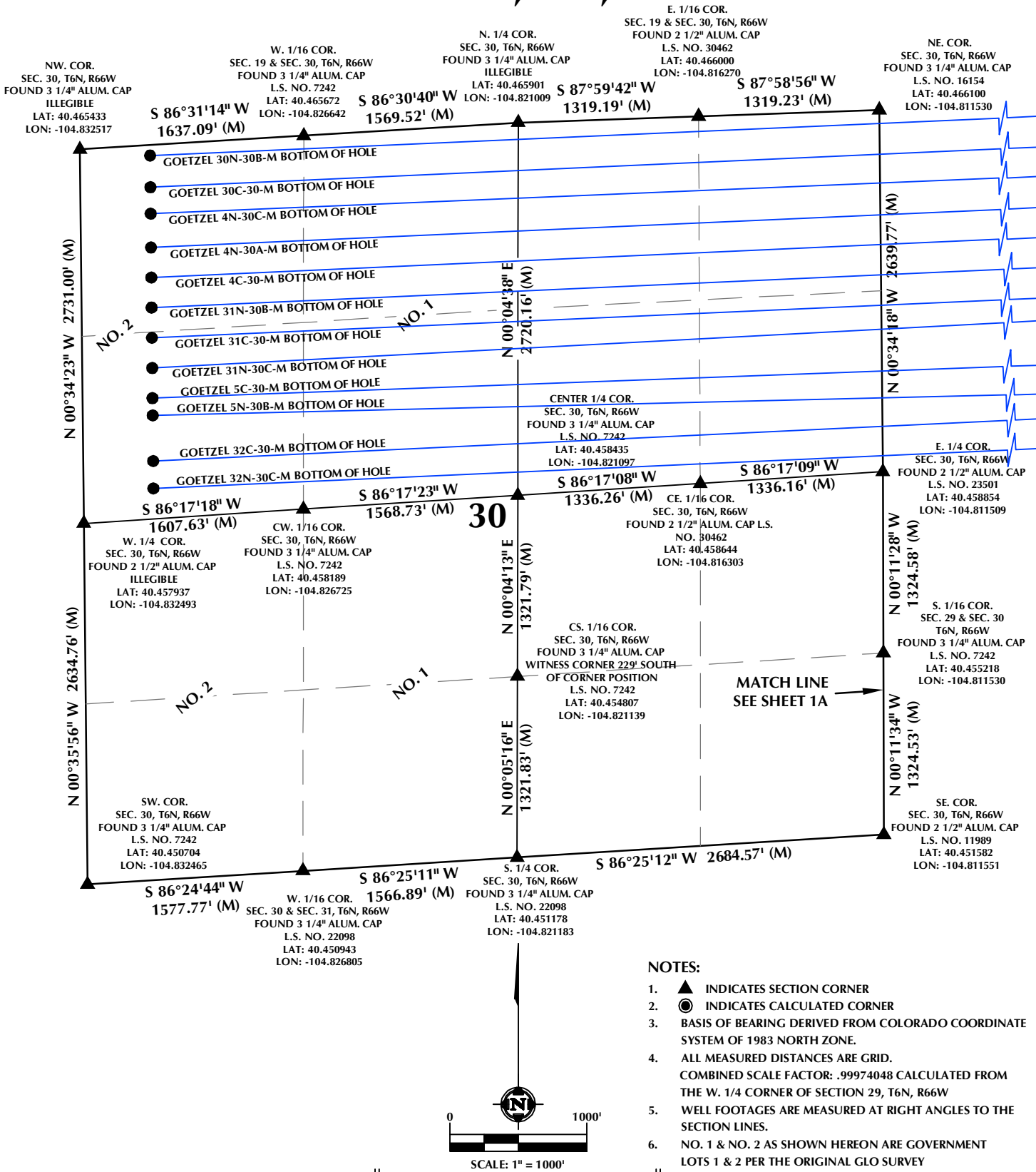


CONSULTING, LLC

SHERIDAN OFFICE **LOVELAND OFFICE**
 1095 Saberton Avenue 1635 Foxtrail Drive, Suite 204
 Sheridan, Wyoming 82801 Loveland, Colorado 80538
 Phone 307-674-0609 Phone 970-776-4331

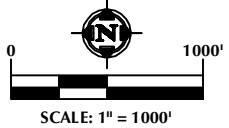
DRAFTED BY:	LMO	CHECKED BY:	JRS	SHEET NO: 1A 1A OF 3
DATE DRAFTED:	8/30/16	DATE SURVEYED:	7/7/16	
REVISED:	9/21/16	FILE NAME:	16-81	

SECTION 30, T6N, R66W




NOTES:

- ▲ INDICATES SECTION CORNER
- INDICATES CALCULATED CORNER
- BASIS OF BEARING DERIVED FROM COLORADO COORDINATE SYSTEM OF 1983 NORTH ZONE.
- ALL MEASURED DISTANCES ARE GRID. COMBINED SCALE FACTOR: .99974048 CALCULATED FROM THE W. 1/4 CORNER OF SECTION 29, T6N, R66W
- WELL FOOTAGES ARE MEASURED AT RIGHT ANGLES TO THE SECTION LINES.
- NO. 1 & NO. 2 AS SHOWN HEREON ARE GOVERNMENT LOTS 1 & 2 PER THE ORIGINAL GLO SURVEY



WELL PAD - GOETZEL 7-29

MULTI-WELL PLAN
 GOETZEL 30N-30B-M, GOETZEL 30C-30-M,
 GOETZEL 4N-30C-M, GOETZEL 4N-30A-M,
 GOETZEL 4C-30-M, GOETZEL 31N-30B-M,
 GOETZEL 31C-30-M, GOETZEL 31N-30C-M,
 GOETZEL 5C-30-M, GOETZEL 5N-30B-M,
 GOETZEL 32C-30-M & GOETZEL 32N-30C-M
 LOCATED IN SECTIONS 29 & 30
 T6N, R66W, 6TH P.M.
 WELD COUNTY, COLORADO


 1625 Broadway, Suite 300
 Denver, Colorado 80202



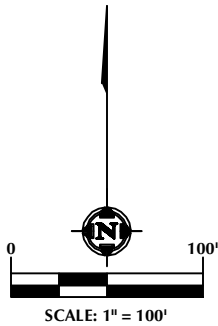
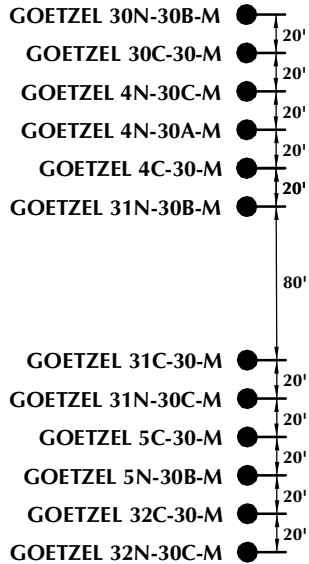
CONSULTING, LLC

SHERIDAN OFFICE
 1095 Saberton Avenue
 Sheridan, Wyoming 82801
 Phone 307-674-0609

LOVELAND OFFICE
 1635 Foxtrail Drive, Suite 204
 Loveland, Colorado 80538
 Phone 970-776-4331

DRAFTED BY:	LMO	CHECKED BY:	JRS	SHEET NO: 1B 1B OF 3
DATE DRAFTED:	8/30/16	DATE SURVEYED:	7/7/16	
REVISED:	9/21/16	FILE NAME:	16-81	

GOETZEL 7-29



NOTES:

1. ▲ INDICATES SECTION CORNER
2. ● INDICATES CALCULATED CORNER
3. BASIS OF BEARING DERIVED FROM COLORADO COORDINATE SYSTEM OF 1983 NORTH ZONE.
4. ALL MEASURED DISTANCES ARE GRID.
COMBINED SCALE FACTOR: .99974048 CALCULATED FROM THE W. 1/4 CORNER OF SECTION 29
5. WELL FOOTAGES ARE MEASURED AT RIGHT ANGLES TO THE SECTION LINES.

WELL PAD - GOETZEL 7-29

MULTI-WELL PLAN
 GOETZEL 30N-30B-M, GOETZEL 30C-30-M,
 GOETZEL 4N-30C-M, GOETZEL 4N-30A-M,
 GOETZEL 4C-30-M, GOETZEL 31N-30B-M,
 GOETZEL 31C-30-M, GOETZEL 31N-30C-M,
 GOETZEL 5C-30-M, GOETZEL 5N-30B-M,
 GOETZEL 32C-30-M & GOETZEL 32N-30C-M
 LOCATED IN SECTIONS 29 & 30
 T6N, R66W, 6TH P.M.
 WELD COUNTY, COLORADO


 1625 Broadway, Suite 300
 Denver, Colorado 80202



CONSULTING, LLC

SHERIDAN OFFICE 1095 Saberton Avenue Sheridan, Wyoming 82801 Phone 307-674-0609
 LOVELAND OFFICE 1635 Foxtrail Drive, Suite 204 Loveland, Colorado 80538 Phone 970-776-4331

DRAFTED BY:	LMO	CHECKED BY:	JRS	SHEET NO: 2 2 OF 3
DATE DRAFTED:	8/30/16	DATE SURVEYED:	7/7/16	
REVISED:	9/21/16	FILE NAME:	16-81	

GOETZEL 7-29

WELL NOTES:

GOETZEL 30N-30B-M

SURFACE: 1813' FNL & 2445' FEL LATITUDE= 40.461338° LONGITUDE= -104.801183°	TOP OF PRODUCTION: 75' FNL & 2594' FWL LATITUDE= 40.466094° LONGITUDE= -104.802208°	BOTTOM HOLE: 75' FNL & 510' FWL LATITUDE= 40.465302° LONGITUDE= -104.830684°	FORMATION: NIOBRARA
---	---	--	-------------------------------

GOETZEL 30C-30-M

SURFACE: 1833' FNL & 2445' FEL LATITUDE= 40.461283° LONGITUDE= -104.801183°	TOP OF PRODUCTION: 299' FNL & 2592' FWL LATITUDE= 40.465479° LONGITUDE= -104.802212°	BOTTOM HOLE: 307' FNL & 510' FWL LATITUDE= 40.464664° LONGITUDE= -104.830682°	FORMATION: CODELL
---	--	---	-----------------------------

GOETZEL 4N-30C-M

SURFACE: 1853' FNL & 2445' FEL LATITUDE= 40.461228° LONGITUDE= -104.801184°	TOP OF PRODUCTION: 518' FNL & 2590' FWL LATITUDE= 40.464877° LONGITUDE= -104.802217°	BOTTOM HOLE: 499' FNL & 510' FWL LATITUDE= 40.464136° LONGITUDE= -104.830680°	FORMATION: NIOBRARA
---	--	---	-------------------------------

GOETZEL 4N-30A-M

SURFACE: 1873' FNL & 2446' FEL LATITUDE= 40.461173° LONGITUDE= -104.801184°	TOP OF PRODUCTION: 741' FNL & 2589' FWL LATITUDE= 40.464265° LONGITUDE= -104.802221°	BOTTOM HOLE: 746' FNL & 510' FWL LATITUDE= 40.463457° LONGITUDE= -104.830678°	FORMATION: NIOBRARA
---	--	---	-------------------------------

GOETZEL 4C-30-M

SURFACE: 1893' FNL & 2446' FEL LATITUDE= 40.461118° LONGITUDE= -104.801185°	TOP OF PRODUCTION: 959' FNL & 2587' FWL LATITUDE= 40.463666° LONGITUDE= -104.802226°	BOTTOM HOLE: 965' FNL & 510' FWL LATITUDE= 40.462855° LONGITUDE= -104.830676°	FORMATION: CODELL
---	--	---	-----------------------------

GOETZEL 31N-30B-M

SURFACE: 1913' FNL & 2446' FEL LATITUDE= 40.461064° LONGITUDE= -104.801185°	TOP OF PRODUCTION: 1178' FNL & 2585' FWL LATITUDE= 40.463065° LONGITUDE= -104.802230°	BOTTOM HOLE: 1183' FNL & 510' FWL LATITUDE= 40.462256° LONGITUDE= -104.830674°	FORMATION: NIOBRARA
---	---	--	-------------------------------

GOETZEL 31C-30-M

SURFACE: 1993' FNL & 2446' FEL LATITUDE= 40.460844° LONGITUDE= -104.801187°	TOP OF PRODUCTION: 1401' FNL & 2584' FWL LATITUDE= 40.462452° LONGITUDE= -104.802235°	BOTTOM HOLE: 1404' FNL & 510' FWL LATITUDE= 40.461649° LONGITUDE= -104.830672°	FORMATION: CODELL
---	---	--	-----------------------------

GOETZEL 31N-30C-M

SURFACE: 2013' FNL & 2446' FEL LATITUDE= 40.460789° LONGITUDE= -104.801187°	TOP OF PRODUCTION: 1554' FNL & 2582' FWL LATITUDE= 40.462032° LONGITUDE= -104.802238°	BOTTOM HOLE: 1625' FNL & 510' FWL LATITUDE= 40.461041° LONGITUDE= -104.830670°	FORMATION: NIOBRARA
---	---	--	-------------------------------

GOETZEL 5C-30-M

SURFACE: 2033' FNL & 2446' FEL LATITUDE= 40.460734° LONGITUDE= -104.801188°	TOP OF PRODUCTION: 1902' FNL & 2580' FWL LATITUDE= 40.461076° LONGITUDE= -104.802245°	BOTTOM HOLE: 1845' FNL & 510' FWL LATITUDE= 40.460437° LONGITUDE= -104.830668°	FORMATION: CODELL
---	---	--	-----------------------------

GOETZEL 5N-30B-M

SURFACE: 2053' FNL & 2446' FEL LATITUDE= 40.460679° LONGITUDE= -104.801188°	TOP OF PRODUCTION: 2131' FNL & 2578' FWL LATITUDE= 40.460447° LONGITUDE= -104.802250°	BOTTOM HOLE: 1970' FNL & 510' FWL LATITUDE= 40.460093° LONGITUDE= -104.830667°	FORMATION: NIOBRARA
---	---	--	-------------------------------

GOETZEL 32C-30-M

SURFACE: 2073' FNL & 2446' FEL LATITUDE= 40.460624° LONGITUDE= -104.801188°	TOP OF PRODUCTION: 2278' FNL & 2577' FWL LATITUDE= 40.460044° LONGITUDE= -104.802253°	BOTTOM HOLE: 2303' FNL & 510' FWL LATITUDE= 40.459178° LONGITUDE= -104.830664°	FORMATION: CODELL
---	---	--	-----------------------------

GOETZEL 32N-30C-M

SURFACE: 2093' FNL & 2447' FEL LATITUDE= 40.460569° LONGITUDE= -104.801189°	TOP OF PRODUCTION: 2499' FNL & 2575' FWL LATITUDE= 40.459437° LONGITUDE= -104.802257°	BOTTOM HOLE: 2503' FNL & 510' FWL LATITUDE= 40.458628° LONGITUDE= -104.830663°	FORMATION: NIOBRARA
---	---	--	-------------------------------

WELL PAD - GOETZEL 7-29

MULTI-WELL PLAN

GOETZEL 30N-30B-M, GOETZEL 30C-30-M,
GOETZEL 4N-30C-M, GOETZEL 4N-30A-M,
GOETZEL 4C-30-M, GOETZEL 31N-30B-M,
GOETZEL 31C-30-M, GOETZEL 31N-30C-M,
GOETZEL 5C-30-M, GOETZEL 5N-30B-M,
GOETZEL 32C-30-M & GOETZEL 32N-30C-M
LOCATED IN SECTIONS 29 & 30
T6N, R66W, 6TH P.M.
WELD COUNTY, COLORADO



1625 Broadway, Suite 300
Denver, Colorado 80202



CONSULTING, LLC

SHERIDAN OFFICE
1095 Saberton Avenue
Sheridan, Wyoming 82801
Phone 307-674-0609

LOVELAND OFFICE
1635 Foxtrail Drive, Suite 204
Loveland, Colorado 80538
Phone 970-776-4331

DRAFTED BY:	LMO	CHECKED BY:	JRS	SHEET NO: 3 3 OF 3
DATE DRAFTED:	8/30/16	DATE SURVEYED:	7/7/16	
REVISED:	9/21/16	FILE NAME:	16-81	