

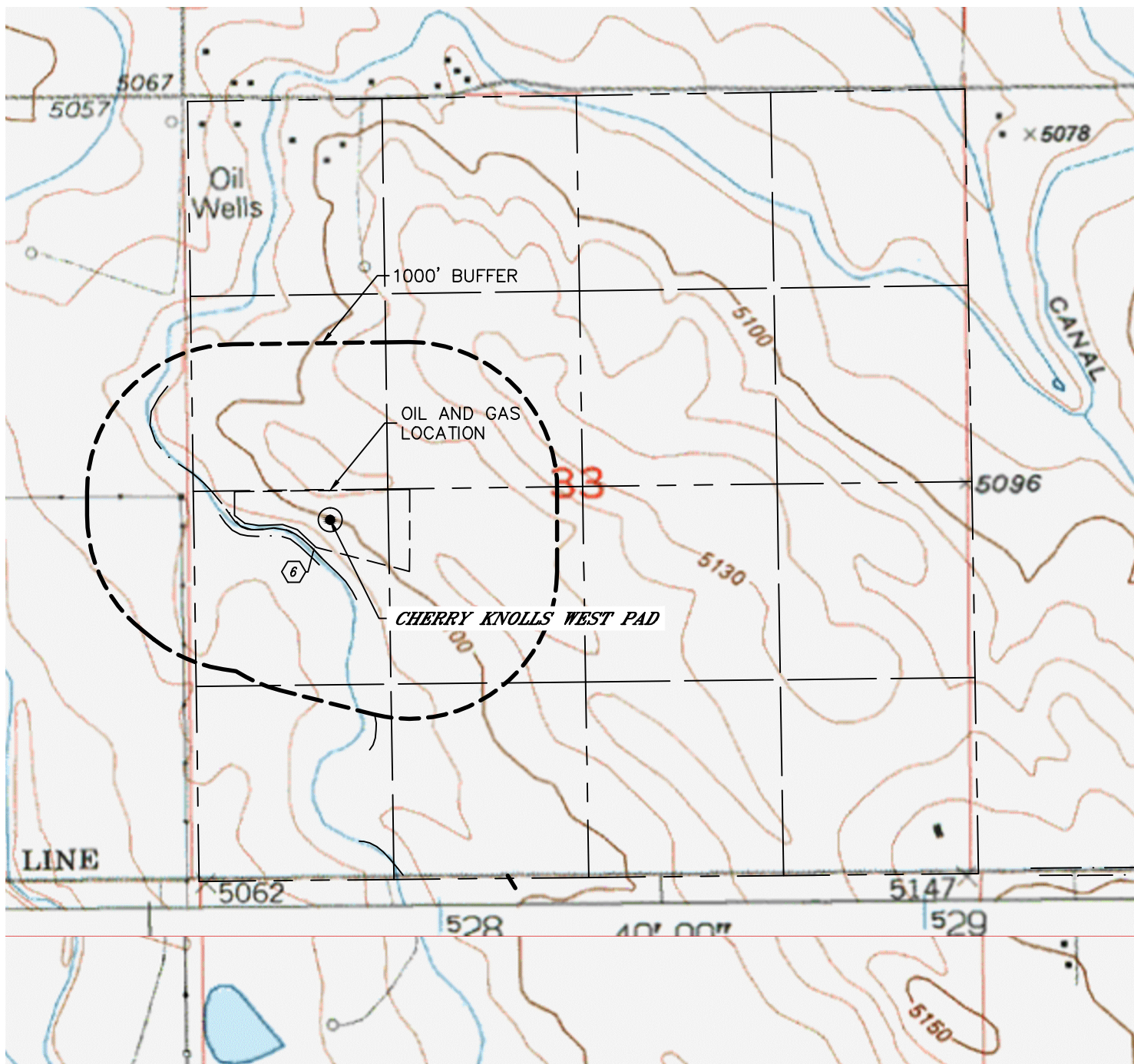


Lat40°, Inc. 6250 W. 10th Street, Unit 2, Greeley, CO 970-515-5294

# HYDROLOGY MAP

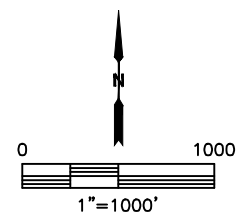
## CHERRY KNOLLS WEST PAD

SECTION: 33  
TOWNSHIP: 1N  
RANGE: 65W  
6TH. P.M.  
WELD COUNTY, CO



DISTANCES MEASURED FROM EDGE OF OIL AND GAS LOCATION

6 CANAL 22' SW



DATE: 11/02/2016  
PROJECT#: 2015117