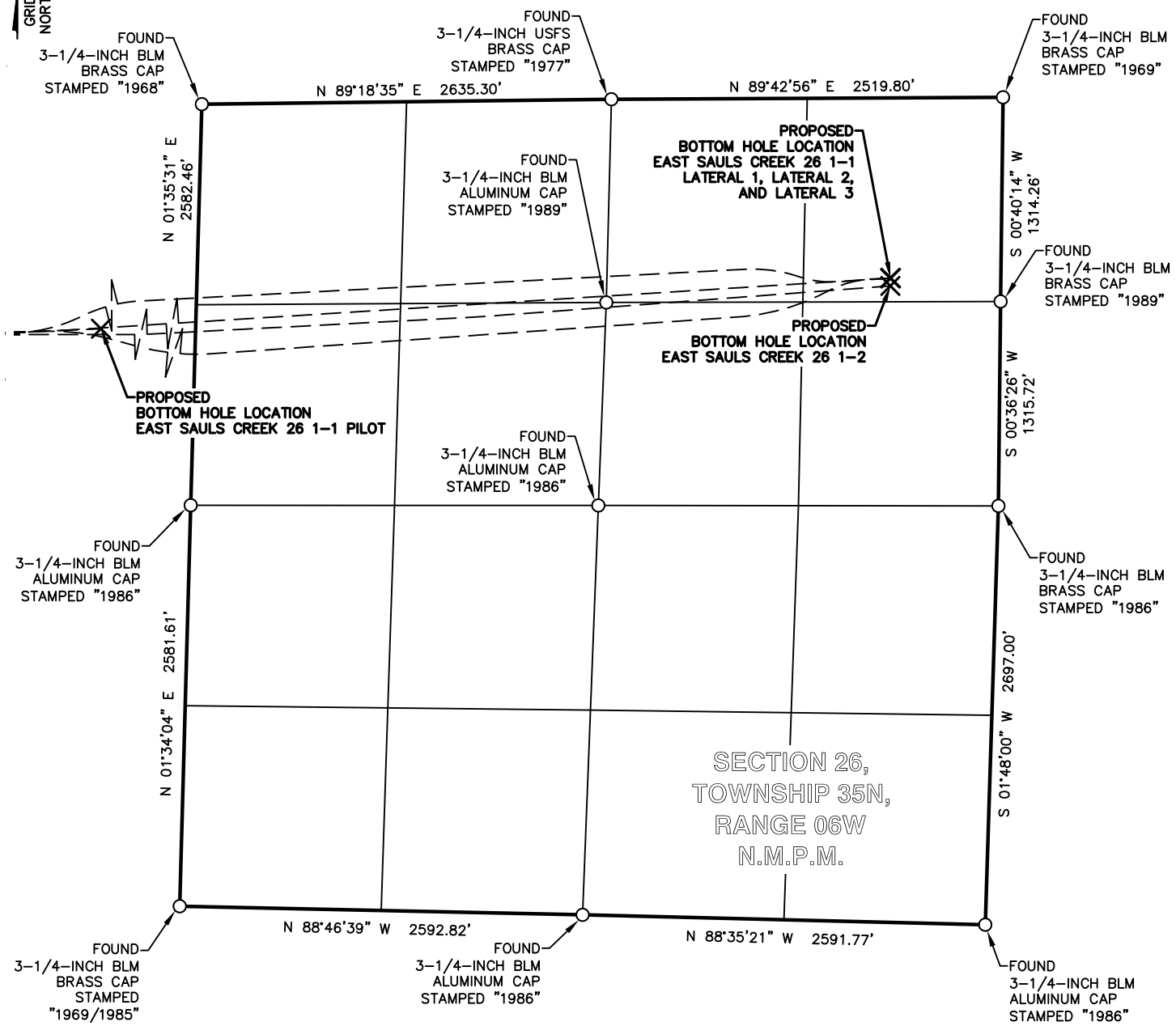



LEGEND	
FOUND MONUMENT	O
SURFACE HOLE LOCATION	⊗
BOTTOM HOLE LOCATION	×





BP AMERICA
PRODUCTION COMPANY
US LOWER 48 ONSHORE

MULTI-WELL PLAN

YANKEE FEDERAL A 2, EAST SAULS CREEK
26 1-1, AND EAST SAULS CREEK 26 1-2
PART OF
SECTION 26 AND SECTION 27, TOWNSHIP 35N,
RANGE 06W, N.M.P.M.
LA PLATA COUNTY, COLORADO

DRAWN BY CFW	CHECKED BY RLM	SCALE 1"=1000'	DATE 12/13/2016	SHEET 2 OF 3	REVISION
-----------------	-------------------	-------------------	--------------------	-----------------	----------

YANKEE FEDERAL A 2 WELLBORE DISTANCES	
SHL TO TOP	661'
TOP TO BHL LATERAL 1	3,086'
TOP TO BHL LATERAL 1 ST 1	3,119'


YANKEE FEDERAL A 2	CSZ NAD'83	NAD'83	TIES	SEC / TWP / RNG	ELEVATION
EXISTING SURFACE HOLE LOCATION (SHL)	N (Y) = 1,227,819.06' E (X) = 2,414,769.17'	LAT. = 37.27503133°N LON. = 107.51142977°W	FNL = 1537' FEL = 1566'	SEC 27, TWP 35N, RNG 06W	EXISTING GROUND 7340.23'
EXISTING BOTTOM HOLE LOCATION (BHL)	N (Y) = 1,226,983.36' E (X) = 2,414,787.67'	LAT. = 37.27273779°N LON. = 107.51130436°W	FNL = 2371' FEL = 1525'	SEC 27, TWP 35N, RNG 06W	PROPOSED GRADE 7340.23'
PROPOSED TOP OF PRODUCTION (TOP) LAT 1 AND LAT 1 ST 1	N (Y) = 1,227,161.37' E (X) = 2,414,779.79'	LAT. = 37.27322610°N LON. = 107.51134461°W	FNL = 2194' FEL = 1537'	SEC 27, TWP 35N, RNG 06W	
PROPOSED BOTTOM HOLE LOCATION (BHL) LAT 1	N (Y) = 1,227,306.10' E (X) = 2,411,720.15'	LAT. = 37.27344210°N LON. = 107.52186778°W	FNL = 2179' FWL = 716'	SEC 27, TWP 35N, RNG 06W	
PROPOSED BOTTOM HOLE LOCATION (BHL) LAT 1 ST 1	N (Y) = 1,227,481.10' E (X) = 2,411,721.72'	LAT. = 37.27392270°N LON. = 107.52187541°W	FNL = 2004' FWL = 715'	SEC 27, TWP 35N, RNG 06W	

EAST SAULS CREEK 26 1-1 WELLBORE DISTANCES	
SHL TO TOP	341'
TOP TO BHL PILOT	657'
TOP TO BHL LATERAL 1	5,747'
TOP TO BHL LATERAL 2	5,783'
TOP TO BHL LATERAL 3	5,801'

EAST SAULS CREEK 26 1-1	CSZ NAD'83	NAD'83	TIES	SEC / TWP / RNG	ELEVATION
PROPOSED SURFACE HOLE LOCATION (SHL)	N (Y) = 1,227,800.12' E (X) = 2,414,731.21'	LAT. = 37.27497708°N LON. = 107.51155879°W	FNL = 1558' FEL = 1604'	SEC 27, TWP 35N, RNG 06W	EXISTING GROUND 7340.01'
PROPOSED TOP OF PRODUCTION (TOP) PILOT, LAT 1, LAT 2, AND LAT 3	N (Y) = 1,227,815.06' E (X) = 2,415,071.96'	LAT. = 37.27503825°N LON. = 107.51038911°W	FNL = 1528' FEL = 1264'	SEC 27, TWP 35N, RNG 06W	PROPOSED GRADE 7340.23'
PROPOSED BOTTOM HOLE LOCATION (BHL) PILOT	N (Y) = 1,227,843.81' E (X) = 2,415,727.98'	LAT. = 37.27515594°N LON. = 107.50813720°W	FNL = 1472' FEL = 609'	SEC 27, TWP 35N, RNG 06W	
PROPOSED BOTTOM HOLE LOCATION (BHL) LAT 1	N (Y) = 1,228,169.47' E (X) = 2,420,808.13'	LAT. = 37.27634874°N LON. = 107.49070593°W	FNL = 1160' FEL = 710'	SEC 26, TWP 35N, RNG 06W	
PROPOSED BOTTOM HOLE LOCATION (BHL) LAT 2	N (Y) = 1,228,169.47' E (X) = 2,420,808.13'	LAT. = 37.27634874°N LON. = 107.49070593°W	FNL = 1160' FEL = 710'	SEC 26, TWP 35N, RNG 06W	
PROPOSED BOTTOM HOLE LOCATION (BHL) LAT 3	N (Y) = 1,228,169.47' E (X) = 2,420,808.13'	LAT. = 37.27634874°N LON. = 107.49070593°W	FNL = 1160' FEL = 710'	SEC 26, TWP 35N, RNG 06W	

EAST SAULS CREEK 26 1-2 WELLBORE DISTANCES	
SHL TO TOP	26'
TOP TO BHL	6,080'

EAST SAULS CREEK 26 1-2	CSZ NAD'83	NAD'83	TIES	SEC / TWP / RNG	ELEVATION
PROPOSED SURFACE HOLE LOCATION (SHL)	N (Y) = 1,227,806.45' E (X) = 2,414,712.24'	LAT. = 37.27499334°N LON. = 107.51162444°W	FNL = 1552' FEL = 1623'	SEC 27, TWP 35N, RNG 06W	EXISTING GROUND 7340.04'
PROPOSED TOP OF PRODUCTION (TOP)	N (Y) = 1,227,806.45' E (X) = 2,414,737.90'	LAT. = 37.27499486°N LON. = 107.51153627°W	FNL = 1551' FEL = 1597'	SEC 27, TWP 35N, RNG 06W	PROPOSED GRADE 7340.23'
PROPOSED BOTTOM HOLE LOCATION (BHL)	N (Y) = 1,228,119.47' E (X) = 2,420,807.58'	LAT. = 37.27621142°N LON. = 107.49070416°W	FNL = 1210' FEL = 710'	SEC 26, TWP 35N, RNG 06W	

	BP AMERICA PRODUCTION COMPANY US LOWER 48 ONSHORE
	MULTI-WELL PLAN
	YANKEE FEDERAL A 2, EAST SAULS CREEK 26 1-1, AND EAST SAULS CREEK 26 1-2 PART OF SECTION 26 AND SECTION 27, TOWNSHIP 35N, RANGE 06W, N.M.P.M. LA PLATA COUNTY, COLORADO

DRAWN BY CFW	CHECKED BY RLM	SCALE N/A	DATE 12/13/2016	SHEET 3 OF 3	REVISION
-----------------	-------------------	--------------	--------------------	-----------------	----------