



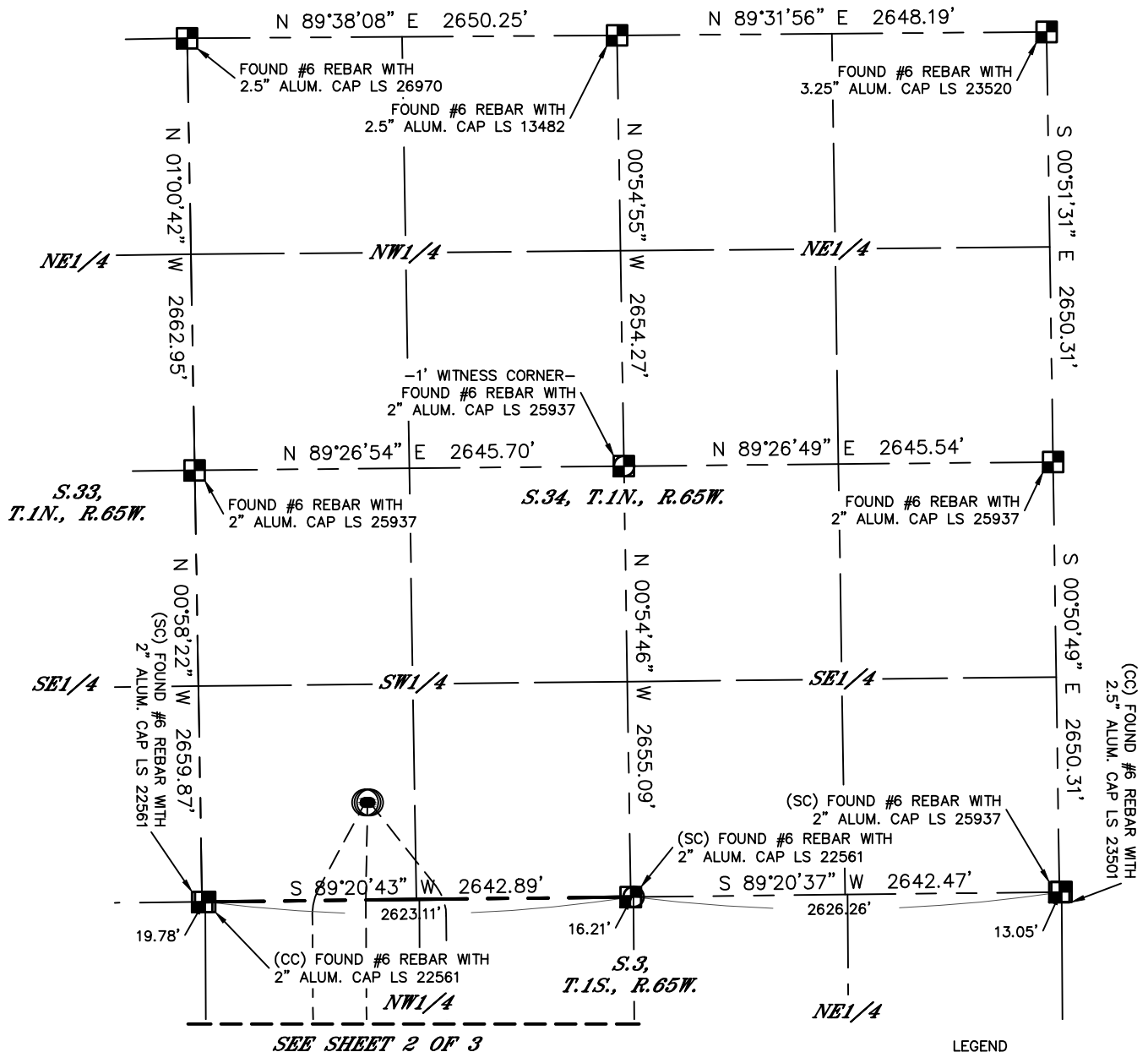
Lat40°, Inc. 6250 W. 10th Street, Unit 2, Greeley, CO 970-515-5294

MULTI-WELL PLAN

JUDY 34-P PAD

THIS MAP DOES NOT REPRESENT A BOUNDARY SURVEY

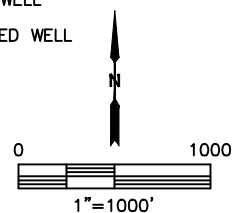
SECTION: 34
TOWNSHIP: 1N
RANGE: 65W
6TH. P.M.
WELD COUNTY, CO



LEGEND

- = ALIQUOT MONUMENT AS DESCRIBED
- = CALCULATED POSITION
- = SURFACE HOLE LOCATION (SHL)
- ▲ = ENTRY POINT LOCATION (EP)
- = BOTTOM HOLE LOCATION (BHL)
- ⊙ = EXISTING WELL
- ⊙ = ABANDONED WELL

#	WELL NAME	BHL FOOTAGE			BHL LAT °	BHL LONG °	BHL S-T-R
7	JUDY 34-3-7	470	FSL	660 FWL	39.98810	-104.65717	3-1S-65
8	JUDY 34-3-8	470	FSL	990 FWL	39.98809	-104.65599	3-1S-65
9	JUDY 34-3-9	470	FSL	1485 FWL	39.98807	-104.65422	3-1S-65





Lat40°, Inc. 6250 W. 10th Street, Unit 2, Greeley, CO 970-515-5294

MULTI-WELL PLAN

JUDY 34-P PAD

SECTION: 34
TOWNSHIP: 1N
RANGE: 65W
6TH. P.M.
WELD COUNTY, CO

