

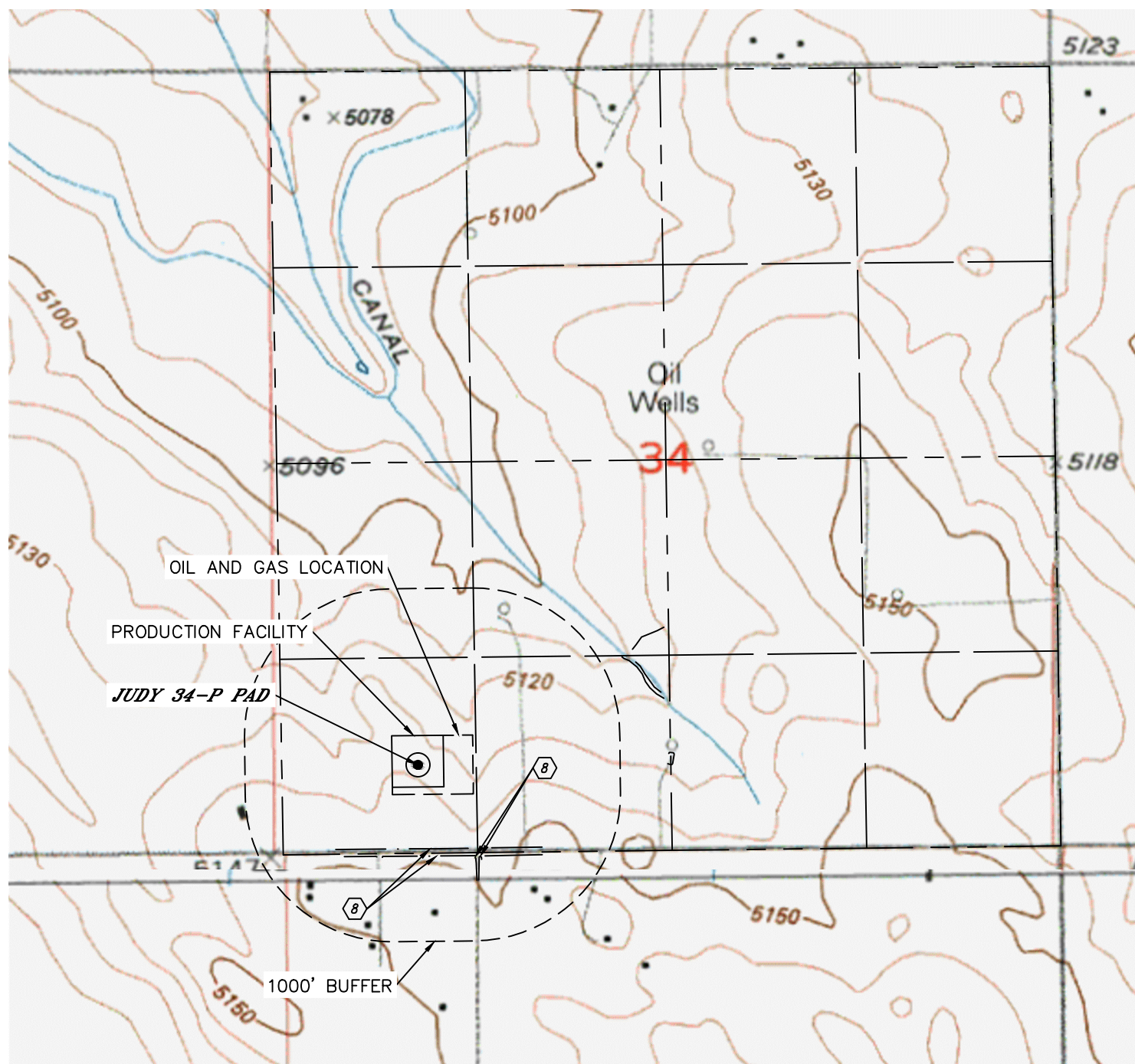


Lat40°, Inc. 6250 W. 10th Street, Unit 2, Greeley, CO 970-515-5294

# HYDROLOGY MAP

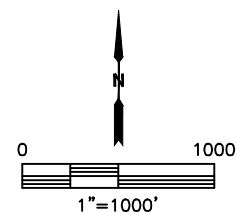
**JUDY 34-P PAD**

SECTION: 34  
TOWNSHIP: 1N  
RANGE: 65W  
6TH. P.M.  
WELD COUNTY, CO



DISTANCES MEASURED FROM EDGE OF OIL AND GAS LOCATION.

⑧ DITCH 370', 420' & 433' S, 430' SE



DATE: 11/17/2016  
PROJECT#: 2016079