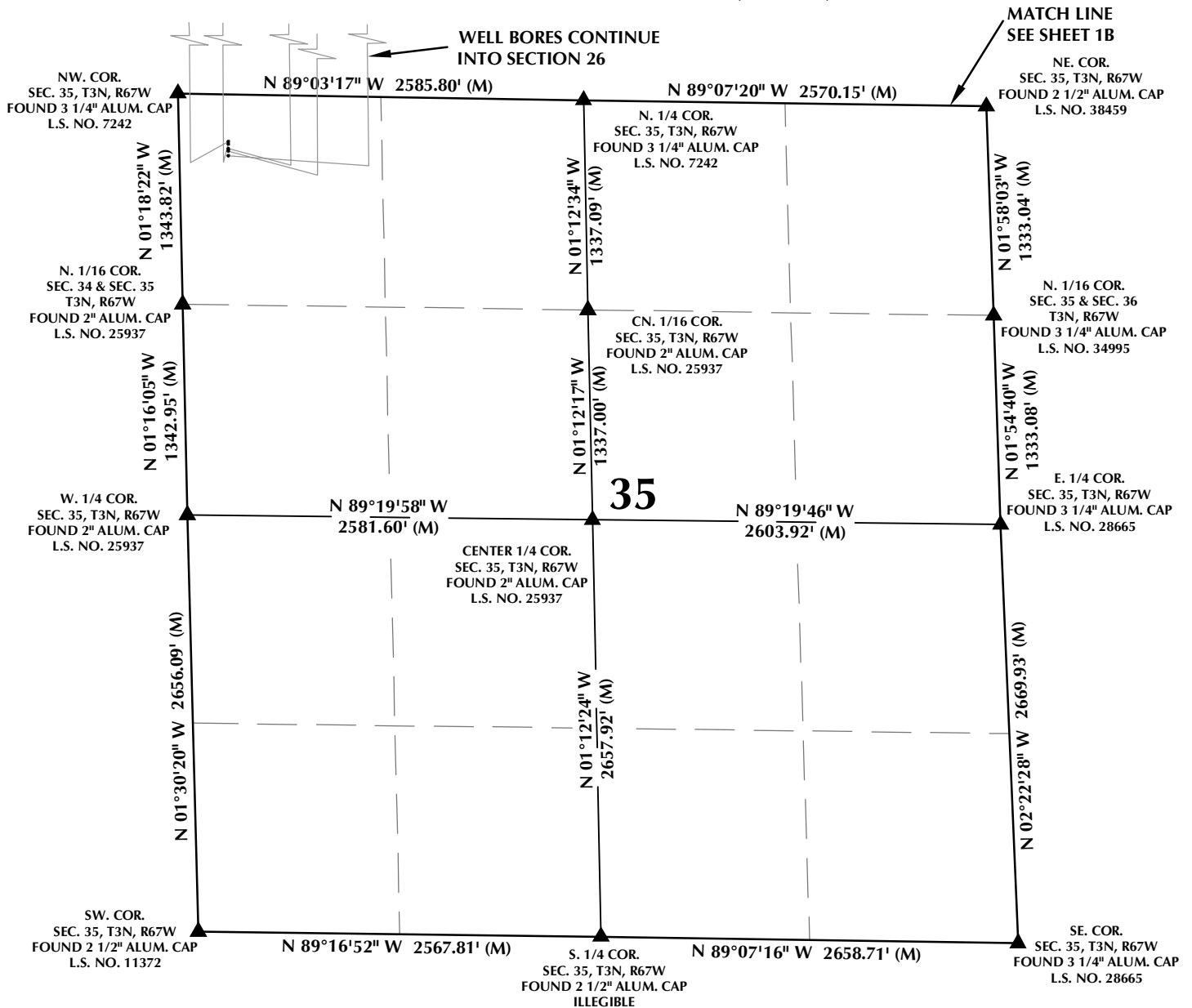


# MULTI-WELL PLAN SECTION 35, T3N, R67W



## WELL NOTES:

CHICA 31C-23HZ  
SURFACE: 301' FNL, 312' FWL, SEC. 35  
BOTTOM HOLE: 912' FNL, 58' FWL, SEC. 23

CHICA 4N-23HZ  
SURFACE: 316' FNL, 312' FWL, SEC. 35  
BOTTOM HOLE: 508' FNL, 334' FWL, SEC. 23

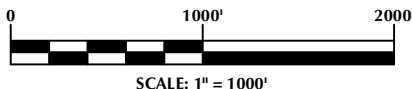
CHICA 4N2-23HZ  
SURFACE: 346' FNL, 311' FWL, SEC. 35  
BOTTOM HOLE: 121' FNL, 731' FWL, SEC. 23

CHICA 35N-14HZ  
SURFACE: 361' FNL, 311' FWL, SEC. 35  
BOTTOM HOLE: 133' FSL, 991' FWL, SEC. 14

CHICA 35N2-14HZ  
SURFACE: 391' FNL, 310' FWL, SEC. 35  
BOTTOM HOLE: 425' FSL, 1207' FWL, SEC. 14

## NOTES:

- ▲ INDICATES SECTION CORNER
- INDICATES CALCULATED CORNER
- BASIS OF BEARING DERIVED FROM COLORADO COORDINATE SYSTEM OF 1983 NORTH ZONE.
- ALL MEASURED DISTANCES ARE GRID.
- COMBINED SCALE FACTOR: .99973037 CALCULATED FROM THE N. 1/4 CORNER OF SECTION 35, T3N, R67W
- WELL FOOTAGES ARE MEASURED AT RIGHT ANGLES TO THE SECTION LINES.



## WELL PAD - CHICA 4N2-23HZ

MULTI-WELL PLAN  
CHICA 31C-23HZ,  
CHICA 4N-23HZ, CHICA 4N2-23HZ,  
CHICA 35N-14HZ & CHICA 35N2-14HZ  
LOCATED IN SECTIONS 14, 23, 26 & 35  
T3N, R67W, 6TH P.M.  
WELD COUNTY, COLORADO

**Kerr-McGee Oil &  
Gas Onshore L.P.**  
1099 18th Street  
Denver, Colorado 80202



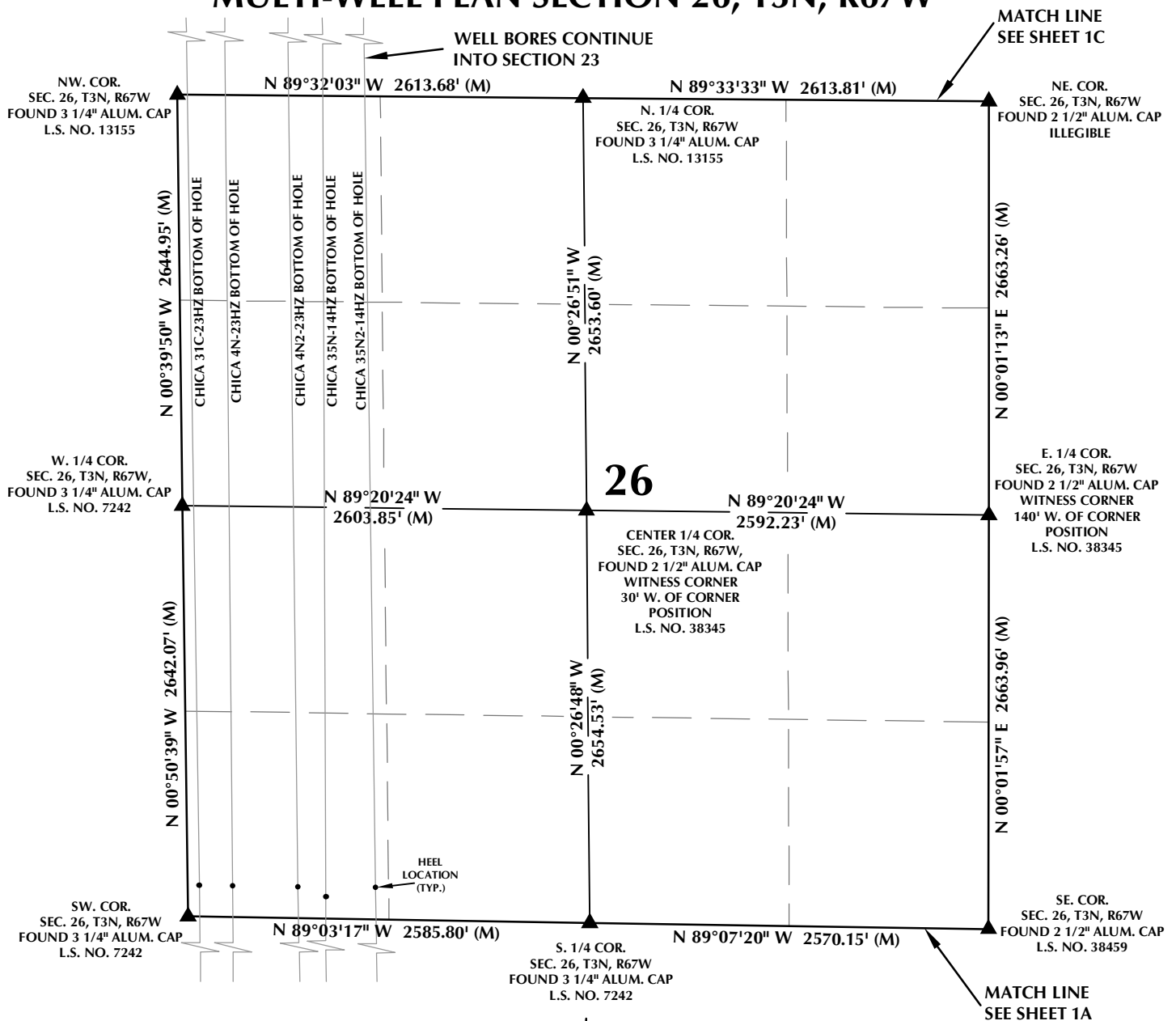
## CONSULTING, LLC

SHERIDAN OFFICE  
1095 Saberton Avenue  
Sheridan, Wyoming 82801  
Phone 307-674-0609

LOVELAND OFFICE  
1635 Foxtrail Drive, Suite 204  
Loveland, Colorado 80538  
Phone 970-776-4331

DRAFTED BY:	LMO	CHECKED BY:	RKF	SHEET NO:
DATE DRAFTED:	10/26/16	DATE SURVEYED:	10/3/16	<b>1A</b>
REVISED:		FILE NAME:	15-38	1A OF 1

# MULTI-WELL PLAN SECTION 26, T3N, R67W



## WELL PAD - CHICA 4N2-23HZ

MULTI-WELL PLAN  
CHICA 31C-23HZ,  
CHICA 4N-23HZ, CHICA 4N2-23HZ,  
CHICA 35N-14HZ & CHICA 35N2-14HZ  
LOCATED IN SECTIONS 14, 23, 26 & 35  
T3N, R67W, 6TH P.M.  
WELD COUNTY, COLORADO

**Kerr-McGee Oil &  
Gas Onshore L.P.**

1099 18th Street  
Denver, Colorado 80202



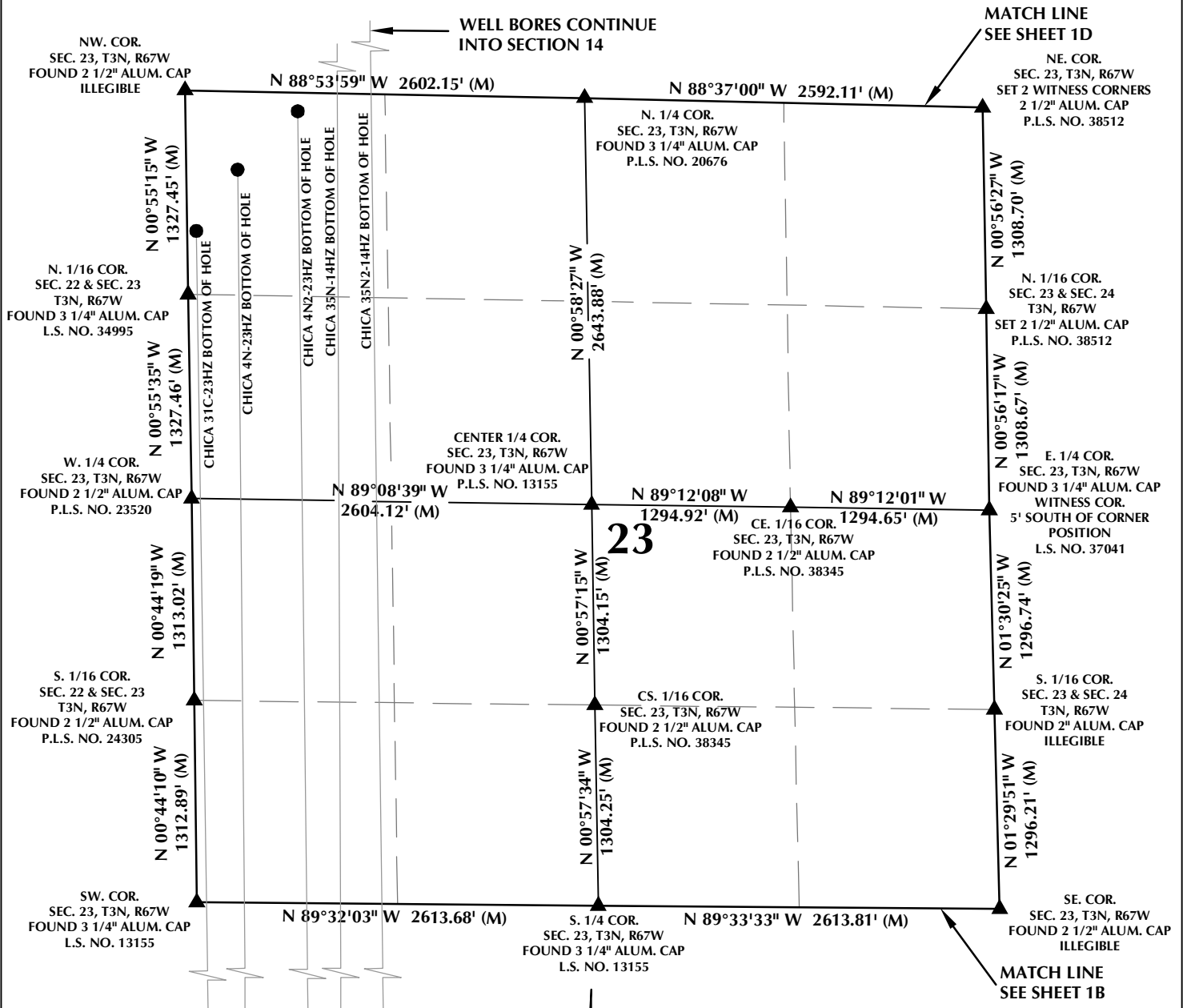
## CONSULTING, LLC

SHERIDAN OFFICE  
1095 Saberton Avenue  
Sheridan, Wyoming 82801  
Phone 307-674-0609

LOVELAND OFFICE  
1635 Foxtrail Drive, Suite 204  
Loveland, Colorado 80538  
Phone 970-776-4331

DRAFTED BY:	LMO	CHECKED BY:	RKF	SHEET NO:
DATE DRAFTED:	10/26/16	DATE SURVEYED:	10/3/16	<b>1B</b>
REVISED:		FILE NAME:	15-38	1B OF 1

# MULTI-WELL PLAN SECTION 23, T3N, R67W



## WELL NOTES:

CHICA 31C-23HZ  
SURFACE: 301' FNL, 312' FWL, SEC. 35  
BOTTOM HOLE: 912' FNL, 58' FWL, SEC. 23

CHICA 4N-23HZ  
SURFACE: 316' FNL, 312' FWL, SEC. 35  
BOTTOM HOLE: 508' FNL, 334' FWL, SEC. 23

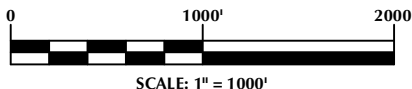
CHICA 4N2-23HZ  
SURFACE: 346' FNL, 311' FWL, SEC. 35  
BOTTOM HOLE: 121' FNL, 731' FWL, SEC. 23

CHICA 35N-14HZ  
SURFACE: 361' FNL, 311' FWL, SEC. 35  
BOTTOM HOLE: 133' FNL, 991' FWL, SEC. 14

CHICA 35N2-14HZ  
SURFACE: 391' FNL, 310' FWL, SEC. 35  
BOTTOM HOLE: 425' FNL, 1207' FWL, SEC. 14

## NOTES:

- ▲ INDICATES SECTION CORNER
- INDICATES CALCULATED CORNER
- BASIS OF BEARING DERIVED FROM COLORADO COORDINATE SYSTEM OF 1983 NORTH ZONE.
- ALL MEASURED DISTANCES ARE GRID.
- COMBINED SCALE FACTOR: .99973037 CALCULATED FROM THE N. 1/4 CORNER OF SECTION 35, T3N, R67W
- WELL FOOTAGES ARE MEASURED AT RIGHT ANGLES TO THE SECTION LINES.



## WELL PAD - CHICA 4N2-23HZ

MULTI-WELL PLAN  
CHICA 31C-23HZ,  
CHICA 4N-23HZ, CHICA 4N2-23HZ,  
CHICA 35N-14HZ & CHICA 35N2-14HZ  
LOCATED IN SECTIONS 14, 23, 26 & 35  
T3N, R67W, 6TH P.M.  
WELD COUNTY, COLORADO

**Kerr-McGee Oil &  
Gas Onshore L.P.**  
1099 18th Street  
Denver, Colorado 80202



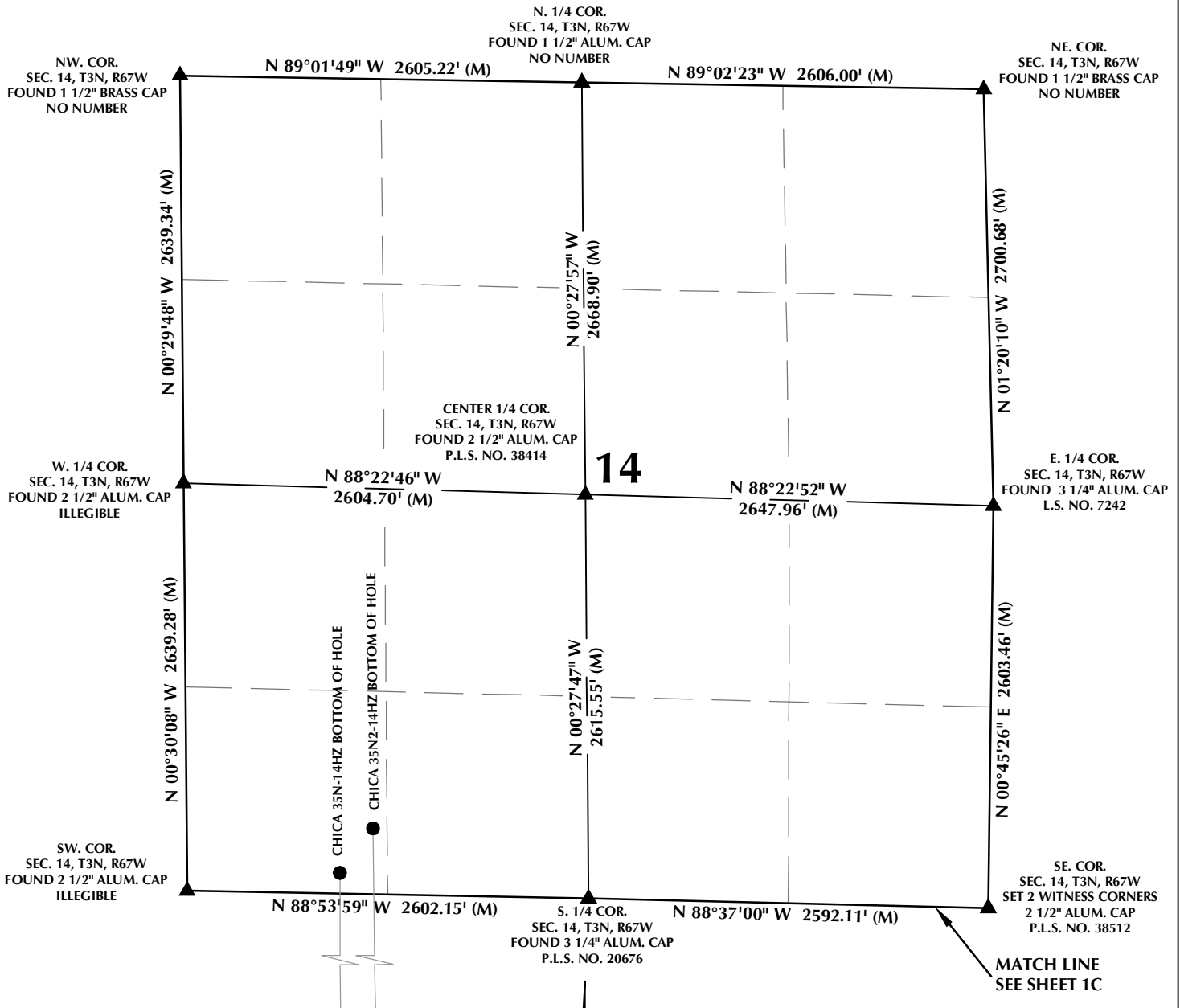
## CONSULTING, LLC

SHERIDAN OFFICE  
1095 Saberton Avenue  
Sheridan, Wyoming 82801  
Phone 307-674-0609

LOVELAND OFFICE  
1635 Foxtrail Drive, Suite 204  
Loveland, Colorado 80538  
Phone 970-776-4331

DRAFTED BY:	LMO	CHECKED BY:	RKF	SHEET NO:
DATE DRAFTED:	10/26/16	DATE SURVEYED:	10/3/16	<b>1C</b>
REVISED:		FILE NAME:	15-38	1C OF 1

# MULTI-WELL PLAN SECTION 14, T3N, R67W



## WELL NOTES:

CHICA 31C-23HZ  
SURFACE: 301' FNL, 312' FWL, SEC. 35  
BOTTOM HOLE: 912' FNL, 58' FWL, SEC. 23

CHICA 4N-23HZ  
SURFACE: 316' FNL, 312' FWL, SEC. 35  
BOTTOM HOLE: 508' FNL, 334' FWL, SEC. 23

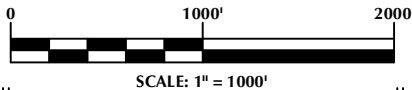
CHICA 4N2-23HZ  
SURFACE: 346' FNL, 311' FWL, SEC. 35  
BOTTOM HOLE: 121' FNL, 731' FWL, SEC. 23

CHICA 35N-14HZ  
SURFACE: 361' FNL, 311' FWL, SEC. 35  
BOTTOM HOLE: 133' FSL, 991' FWL, SEC. 14

CHICA 35N2-14HZ  
SURFACE: 391' FNL, 310' FWL, SEC. 35  
BOTTOM HOLE: 425' FSL, 1207' FWL, SEC. 14

## NOTES:

- ▲ INDICATES SECTION CORNER
- INDICATES CALCULATED CORNER
- BASIS OF BEARING DERIVED FROM COLORADO COORDINATE SYSTEM OF 1983 NORTH ZONE.
- ALL MEASURED DISTANCES ARE GRID.
- COMBINED SCALE FACTOR: .99973037 CALCULATED FROM THE N. 1/4 CORNER OF SECTION 35, T3N, R67W
- WELL FOOTAGES ARE MEASURED AT RIGHT ANGLES TO THE SECTION LINES.



## WELL PAD - CHICA 4N2-23HZ

MULTI-WELL PLAN  
CHICA 31C-23HZ,  
CHICA 4N-23HZ, CHICA 4N2-23HZ,  
CHICA 35N-14HZ & CHICA 35N2-14HZ  
LOCATED IN SECTIONS 14, 23, 26 & 35  
T3N, R67W, 6TH P.M.  
WELD COUNTY, COLORADO

**Kerr-McGee Oil &  
Gas Onshore L.P.**

1099 18th Street  
Denver, Colorado 80202



## CONSULTING, LLC

SHERIDAN OFFICE  
1095 Saberton Avenue  
Sheridan, Wyoming 82801  
Phone 307-674-0609

LOVELAND OFFICE  
1635 Foxtrail Drive, Suite 204  
Loveland, Colorado 80538  
Phone 970-776-4331

DRAFTED BY:	LMO	CHECKED BY:	RKF	SHEET NO:
DATE DRAFTED:	10/26/16	DATE SURVEYED:	10/3/16	1D
REVISED:		FILE NAME:	15-38	1D OF 1