

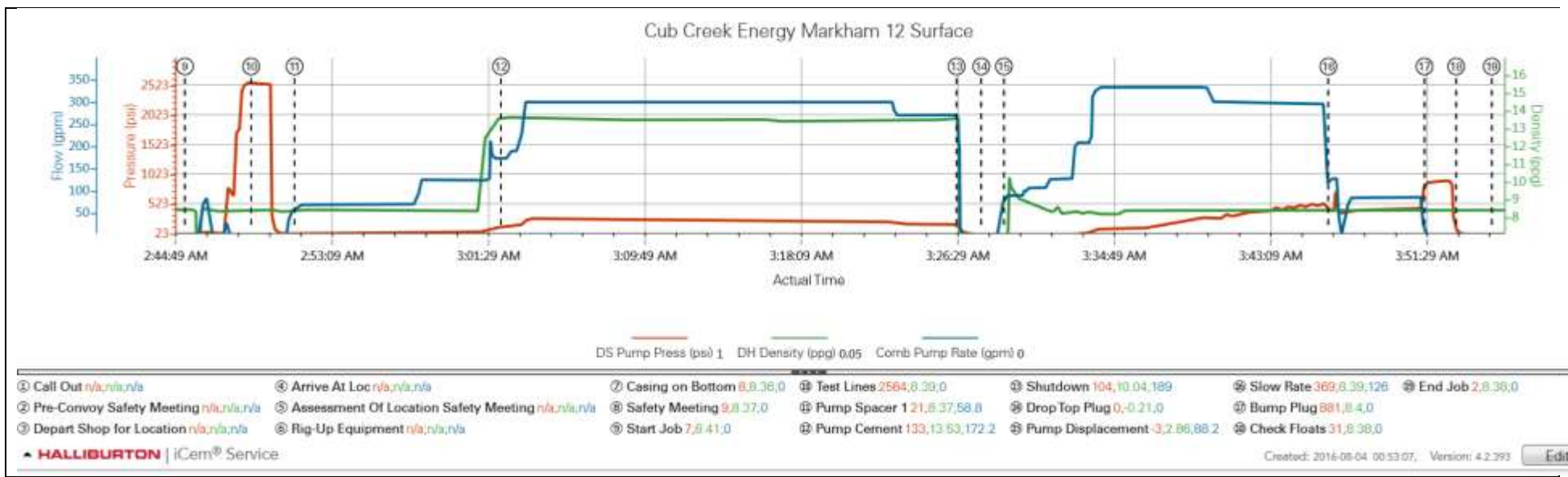
*The Road to Excellence Starts with Safety*

Sold To #: 374215		Ship To #: 3744483		Quote #:		Sales Order #: 0903439964					
Customer: CUB CREEK ENERGY LLC				Customer Rep: Tom Thomas							
Well Name: MARKHAM			Well #: 12		API/UWI #: 05-123-43274-00						
Field: WATTENBERG		City (SAP): MEAD		County/Parish: WELD		State: COLORADO					
Legal Description: NW SE-32-4N-68W-2501FSL-1517FEL											
Contractor: XTREME DRLG				Rig/Platform Name/Num: XTREME 18							
Job BOM: 7521											
Well Type: HORIZONTAL OIL											
Sales Person: HALAMERICA\HB71271				Srv Supervisor: Steve McCoy							
Job											
Formation Name											
Formation Depth (MD)		Top		Bottom							
Form Type				BHST							
Job depth MD		1528ft		Job Depth TVD							
Water Depth				Wk Ht Above Floor		4 ft					
Perforation Depth (MD)		From		To							
Well Data											
Description	New / Used	Size in	ID in	Weight lbm/ft	Thread	Grade	Top MD ft	Bottom MD ft	Top TVD ft	Bottom TVD ft	
Open Hole Section			13.5				0	1539			
Casing		9.625	8.921	36			0	1529			
Tools and Accessories											
Type	Size in	Qty	Make	Depth ft		Type	Size in	Qty	Make		
Guide Shoe	9.625	1		1529		Top Plug	9.625	1	HES		
Float Shoe	9.625	1				Bottom Plug	9.625	1	HES		
Float Collar	9.625	1				SSR plug set	9.625	1	HES		
Insert Float	9.625	1				Plug Container	9.625	1	HES		
Stage Tool	9.625	1				Centralizers	9.625	1	HES		
Miscellaneous Materials											
Gelling Agt		Conc		Surfactant		Conc		Acid Type		Qty	Conc
Treatment Fld		Conc		Inhibitor		Conc		Sand Type		Size	Qty
Fluid Data											
Stage/Plug #: 1											
Fluid #	Stage Type	Fluid Name			Qty	Qty UoM	Mixing Density lbm/gal	Yield ft3/sack	Mix Fluid Gal	Rate bbl/min	Total Mix Fluid Gal
1	Water Based Mud				0	bbl	9.4				

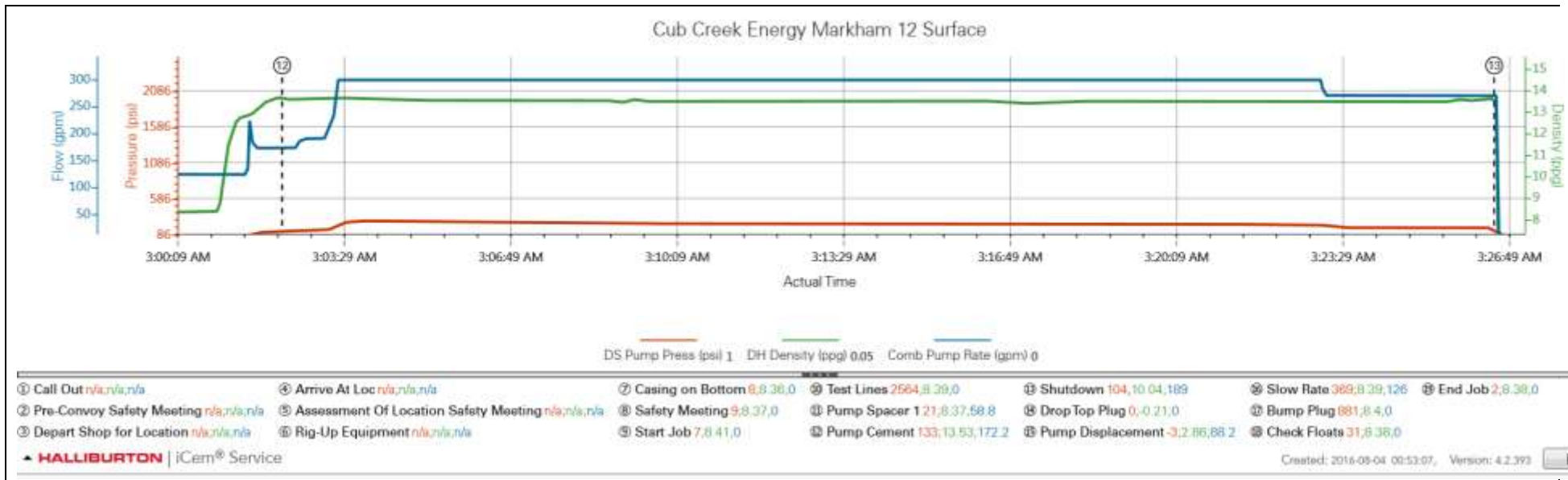
Fluid #	Stage Type	Fluid Name	Qty	Qty UoM	Mixing Density lbm/gal	Yield ft <sup>3</sup> /sack	Mix Fluid Gal	Rate bbl/min	Total Mix Fluid Gal
2	Mud Flush III (Powder)	Mud Flush III	20	bbl	8.4			3	
42 gal/bbl		<b>FRESH WATER</b>							
Fluid #	Stage Type	Fluid Name	Qty	Qty UoM	Mixing Density lbm/gal	Yield ft <sup>3</sup> /sack	Mix Fluid Gal	Rate bbl/min	Total Mix Fluid Gal
3	13.5# SwiftCem	SWIFTCM (TM) SYSTEM	550	sack	13.5	1.74		7	9.2
9.20 Gal		<b>FRESH WATER</b>							
Fluid #	Stage Type	Fluid Name	Qty	Qty UoM	Mixing Density lbm/gal	Yield ft <sup>3</sup> /sack	Mix Fluid Gal	Rate bbl/min	Total Mix Fluid Gal
4	Fresh Water Displacement		114.5	bbl	8.4			7	
Cement Left In Pipe		Amount	47ft		Reason		Shoe Joint		
Comment									

3.0 Attachments

3.1 Cub Creek Energy Markham 12.png



3.2 Cub Creek Energy cement.png



3.3 Cub Creek Energy-displacement.png

