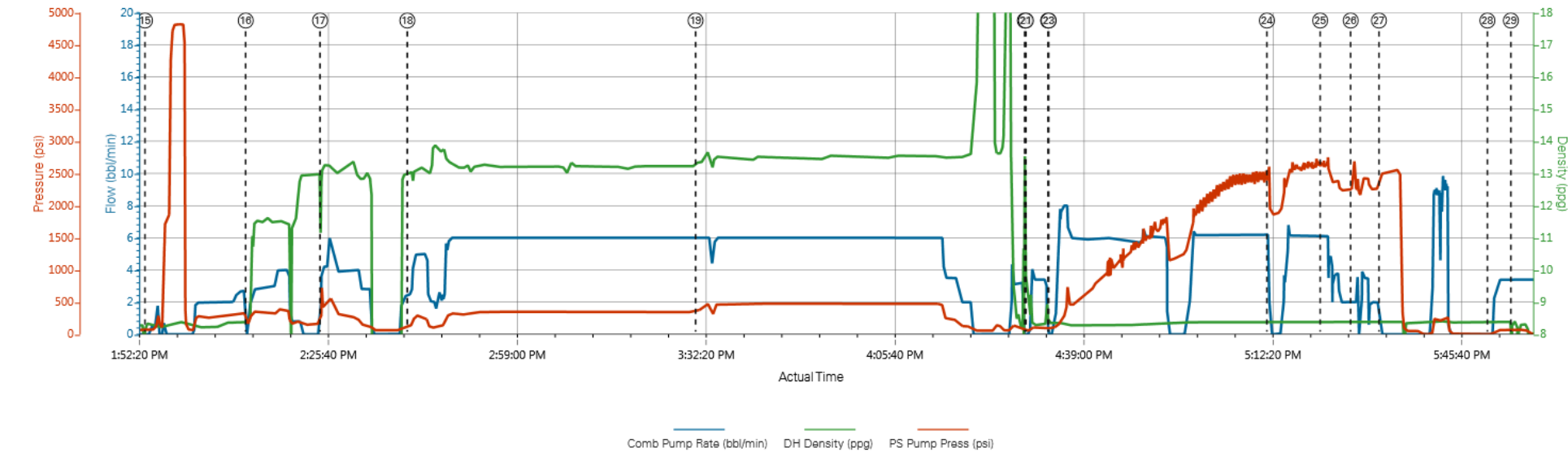


The Road to Excellence Starts with Safety

Sold To #: 374215		Ship To #: 3744678		Quote #:		Sales Order #: 0903470246				
Customer: CUB CREEK ENERGY LLC				Customer Rep: Tom Thomas						
Well Name: MARKHAM			Well #: 11		API/UWI #: 05-123-43275-00					
Field: WATTENBERG		City (SAP): MEAD		County/Parish: WELD		State: COLORADO				
Legal Description: NW SE-32-4N-68W-2485FSL-1517FEL										
Contractor: XTREME DRLG				Rig/Platform Name/Num: XTREME 18						
Job BOM: 7523										
Well Type: HORIZONTAL OIL										
Sales Person: HALAMERICA\HB71271				Srv Supervisor: Aaron Smith						
Job										
Formation Name										
Formation Depth (MD)		Top		Bottom						
Form Type				BHST						
Job depth MD		12158ft		Job Depth TVD		7340				
Water Depth				Wk Ht Above Floor		6				
Perforation Depth (MD)		From		To						
Well Data										
Description	New / Used	Size in	ID in	Weight lbm/ft	Thread	Grade	Top MD ft	Bottom MD ft	Top TVD ft	Bottom TVD ft
Casing		9.625	8.921	36			0	1527	0	0
Casing		5.5	4.892	17			0	12143	0	7340
Open Hole Section			8.75				1538	12158	0	7340
Tools and Accessories										
Type	Size in	Qty	Make	Depth ft		Type	Size in	Qty	Make	
Guide Shoe	5.5					Top Plug	5.5	1	HES	
Float Shoe	5.5	1	SSII	12143		Bottom Plug	5.5	2	HES	
Float Collar	5.5	1	SSII	12119		SSR plug set	5.5		HES	
Insert Float	5.5					Plug Container	5.5	1	HES	
Stage Tool	5.5					Centralizers	5.5		HES	
Fluid Data										
Stage/Plug #: 1										
Fluid #	Stage Type	Fluid Name	Qty	Qty UoM	Mixing Density lbm/gal	Yield ft3/sack	Mix Fluid Gal	Rate bbl/min	Total Mix Fluid Gal	
1	Fresh Water Spacer		10	bbl	8.33					

Fluid #	Stage Type	Fluid Name		Qty	Qty UoM	Mixing Density lbm/gal	Yield ft3/sack	Mix Fluid Gal	Rate bbl/min	Total Mix Fluid Gal
2	11.5 lb/gal Tuned Spacer III	Tuned Spacer III		25	bbl	11.5	3.74			
Fluid #	Stage Type	Fluid Name		Qty	Qty UoM	Mixing Density lbm/gal	Yield ft3/sack	Mix Fluid Gal	Rate bbl/min	Total Mix Fluid Gal
3	13.2# ElastiCem w/o CBL	ELASTICEM (TM) SYSTEM		150	sack	13.2	1.57		5	7.48
Fluid #	Stage Type	Fluid Name		Qty	Qty UoM	Mixing Density lbm/gal	Yield ft3/sack	Mix Fluid Gal	Rate bbl/min	Total Mix Fluid Gal
4	13.2# ElastiCem	ELASTICEM (TM) SYSTEM		1050	sack	13.2	1.57		5	7.49
Fluid #	Stage Type	Fluid Name		Qty	Qty UoM	Mixing Density lbm/gal	Yield ft3/sack	Mix Fluid Gal	Rate bbl/min	Total Mix Fluid Gal
5	13.5# EconoCem	ECONOCEM (TM) SYSTEM		925	sack	13.5	1.68		5	8
Fluid #	Stage Type	Fluid Name		Qty	Qty UoM	Mixing Density lbm/gal	Yield ft3/sack	Mix Fluid Gal	Rate bbl/min	Total Mix Fluid Gal
6	Fresh Water Displacement			282	bbl	8.4				
Cement Left In Pipe		Amount	22 ft			Reason			Shoe Joint	
Comment 22 bbls cement to surface, 32 bbls to surface after 10 bbls wet shoe.										

Cub Creek Markham 11 Production



- ① Call Out n/a;n/a;n/a
- ② Comment n/a;n/a;n/a
- ③ Depart from Service Center or Other Site n/a;n/a;n/a
- ④ Arrive at Location from Service Center n/a;n/a;n/a
- ⑤ Assessment Of Location Safety Meeting n/a;n/a;n/a
- ⑥ Pre-Rig Up Safety Meeting n/a;n/a;n/a
- ⑦ Rig-Up Completed n/a;n/a;n/a
- ⑧ Start Job 0;8.33;7
- ⑨ Pre-Job Safety Meeting 0;8.27;10
- ⑩ Test Lines 0;8.3;29
- ⑪ Pump Spacer 1 0;8.31;3
- ⑫ Pump Spacer 2 1.9;8.3;213
- ⑬ Shutdown 3;11.47;230
- ⑭ End Job 0;8.3;15
- ⑮ Start Job 0;8.34;63
- ⑯ Pump Spacer 1 0;8.37;150

HALLIBURTON | iCem® Service

Created: 2016-08-13 00:46:14, Version: 4.2.393

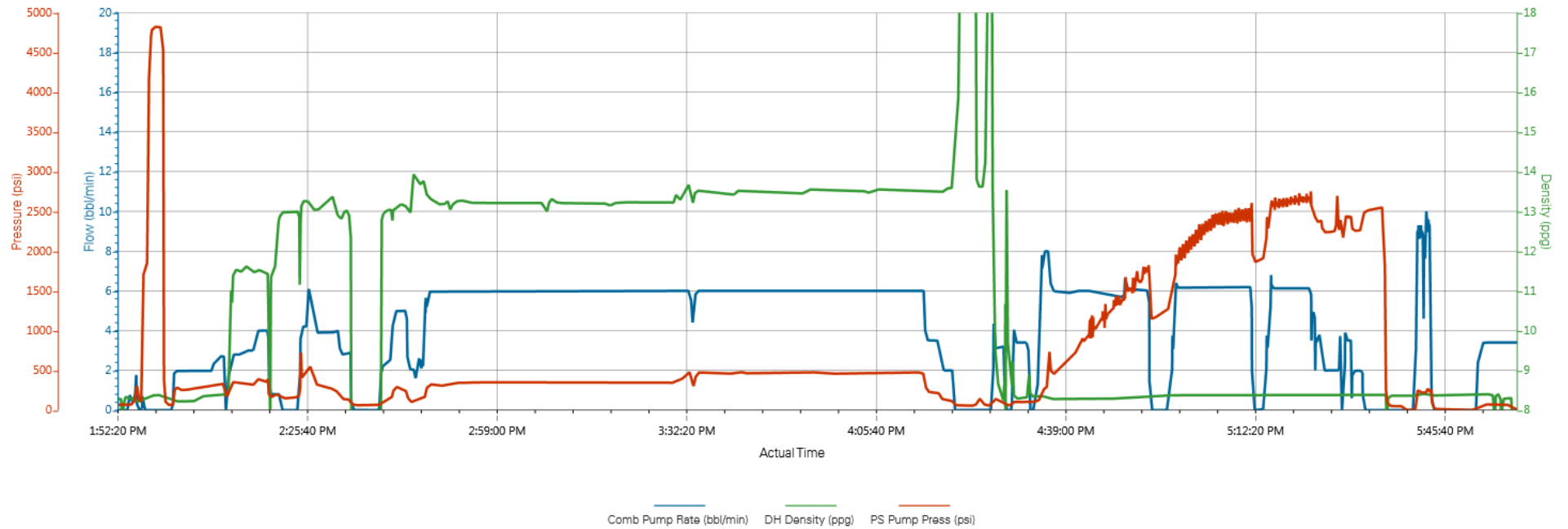
Edit

Customer : CUB CREEK ENERGY LLC
Representative : Aaron Smith

Job Date : 8/13/2016 5:05:25 AM
Sales Order # : 903470246

Well : Markham 11
Operator : Mike Louhgran

Cub Creek Markham 11 Production



▼ HALLIBURTON | iCem® Service

Created: 2016-08-13 00:46:14, Version: 4.2.393

Edit

Customer: CUB CREEK ENERGY LLC
Representative: Aaron Smith

Job Date: 8/13/2016 5:05:25 AM
Sales Order #: 903470246

Well: Markham 11
Operator: Mike Louhgran

iCem® Service

(v. 4.2.393)

Created: Friday, August 19, 2016