

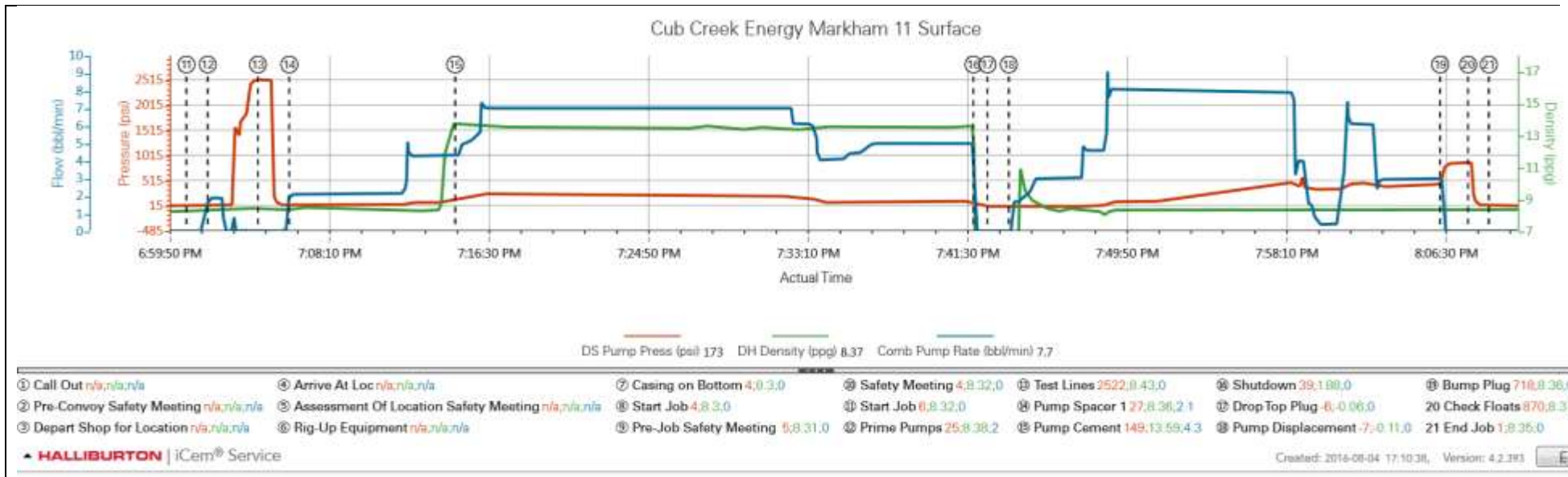
*The Road to Excellence Starts with Safety*

Sold To #: 374215		Ship To #: 3744678		Quote #:		Sales Order #: 0903443168					
Customer: CUB CREEK ENERGY LLC				Customer Rep: Tom Thomas							
Well Name: MARKHAM			Well #: 11		API/UWI #: 05-123-43275-00						
Field: WATTENBERG		City (SAP): MEAD		County/Parish: WELD		State: COLORADO					
Legal Description: NW SE-32-4N-68W-2485FSL-1517FEL											
Contractor: XTREME DRLG				Rig/Platform Name/Num: XTREME 18							
Job BOM: 7521											
Well Type: HORIZONTAL OIL											
Sales Person: HALAMERICA\HB71271				Srvc Supervisor: Steve McCoy							
Job											
Formation Name											
Formation Depth (MD)		Top		Bottom							
Form Type				BHST							
Job depth MD		1538ft		Job Depth TVD							
Water Depth				Wk Ht Above Floor							
Perforation Depth (MD)		From		To							
Well Data											
Description	New / Used	Size in	ID in	Weight lbm/ft	Thread	Grade	Top MD ft	Bottom MD ft	Top TVD ft	Bottom TVD ft	
Open Hole Section			13.5				0	1538			
Casing		9.625	8.921	36			0	1527			
Tools and Accessories											
Type	Size in	Qty	Make	Depth ft		Type	Size in	Qty	Make		
Guide Shoe	9.625	1		1527		Top Plug	9.625	1	HES		
Float Shoe	9.625	1		1480		Bottom Plug	9.625	1	HES		
Float Collar	9.625	1				SSR plug set	9.625	1	HES		
Insert Float	9.625	1				Plug Container	9.625	1	HES		
Stage Tool	9.625	1				Centralizers	9.625	1	HES		
Miscellaneous Materials											
Gelling Agt		Conc		Surfactant		Conc		Acid Type		Qty	
Treatment Fld		Conc		Inhibitor		Conc		Sand Type		Size	
Fluid Data											
Stage/Plug #: 1											
Fluid #	Stage Type	Fluid Name			Qty	Qty UoM	Mixing Density lbm/gal	Yield ft3/sack	Mix Fluid Gal	Rate bbl/min	Total Mix Fluid Gal
1	Water Based Mud				0	bbl	9.4				

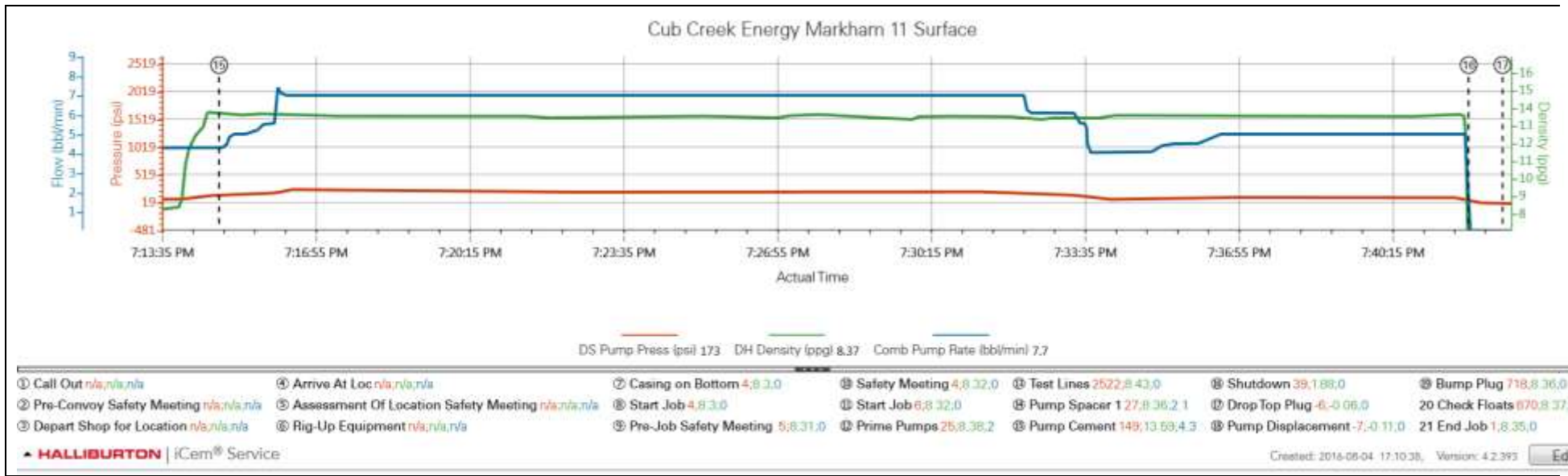
Fluid #	Stage Type	Fluid Name	Qty	Qty UoM	Mixing Density lbm/gal	Yield ft3/sack	Mix Fluid Gal	Rate bbl/min	Total Mix Fluid Gal
2	Mud Flush III (Powder)	Mud Flush III	20	bbl	8.4			2	
42 gal/bbl		FRESH WATER							
Fluid #	Stage Type	Fluid Name	Qty	Qty UoM	Mixing Density lbm/gal	Yield ft3/sack	Mix Fluid Gal	Rate bbl/min	Total Mix Fluid Gal
3	13.5# SwiftCem	SWIFTCEN (TM) SYSTEM	550	sack	13.5	1.74		7	9.2
9.20 Gal		FRESH WATER							
Fluid #	Stage Type	Fluid Name	Qty	Qty UoM	Mixing Density lbm/gal	Yield ft3/sack	Mix Fluid Gal	Rate bbl/min	Total Mix Fluid Gal
4	Fresh Water Displacement		114.5	bbl	8.4			7	
Cement Left In Pipe		Amount	47 ft		Reason		Shoe Joint		
Comment									

3.0 Attachments

3.1 Cub Creek Energy .png



3.2 Cub Creek Energy -pump cement.png



3.3 Cub Creek Energy -displacement.png

