

HALLIBURTON

## Cementing Job Summary

## The Road to Excellence Starts with Safety

Sold To #: 374215		Ship To #: 3743897		Quote #:		Sales Order #: 0903439963				
Customer: CUB CREEK ENERGY LLC				Customer Rep: Tom Thomas						
Well Name: MARKHAM		Well #: 10		API/UWI #: 05-123-43242-00						
Field: WATTENBERG		City (SAP): MEAD		County/Parish: WELD		State: COLORADO				
Legal Description: NW SE-32-4N-68W-2469FSL-1517FEL										
Contractor: XTREME DRLG				Rig/Platform Name/Num: XTREME 18						
Job BOM: 7521										
Well Type: HORIZONTAL OIL										
Sales Person: HALAMERICA/HB71271				Srv Supervisor: Brandon Parker						
Job										
Formation Name										
Formation Depth (MD)		Top		Bottom						
Form Type				BHST						
Job depth MD		1525ft		Job Depth TVD		1536				
Water Depth				Wk Ht Above Floor		5				
Perforation Depth (MD)		From		To						
Well Data										
Description	New / Used	Size in	ID in	Weight lbm/ft	Thread	Grade	Top MD ft	Bottom MD ft	Top TVD ft	Bottom TVD ft
Open Hole Section			13.5				0	1525		
Casing		9.625	8.921	36			0	1525		
Tools and Accessories										
Type	Size in	Qty	Make	Depth ft		Type	Size in	Qty	Make	
Guide Shoe	9.625			1525		Top Plug	9.625	1		
Float Shoe	9.625			44.11		Bottom Plug	9.625		HES	
Float Collar	9.625			1480		SSR plug set	9.625		HES	
Insert Float	9.625					Plug Container	9.625	1	HES	
Stage Tool	9.625					Centralizers	9.625	16		
Fluid Data										
Stage/Plug #: 1										
Fluid #	Stage Type	Fluid Name	Qty	Qty UoM	Mixing Density lbm/gal	Yield ft <sup>3</sup> /sack	Mix Fluid Gal	Rate bbl/min	Total Mix Fluid Gal	
1	Water Based Mud		0	bbl	9.4					
42 gal/bbl										
FRESH WATER										
Fluid #	Stage Type	Fluid Name	Qty	Qty UoM	Mixing Density lbm/gal	Yield ft <sup>3</sup> /sack	Mix Fluid Gal	Rate bbl/min	Total Mix Fluid Gal	
2	Mud Flush III (Powder)	Mud Flush III	20	bbl	8.5					

last updated on 8/3/2016 10:51:43 AM

Page 1 of 2

iCem® Service

(v. 4.2.393)

Created: Wednesday, August 03, 2016

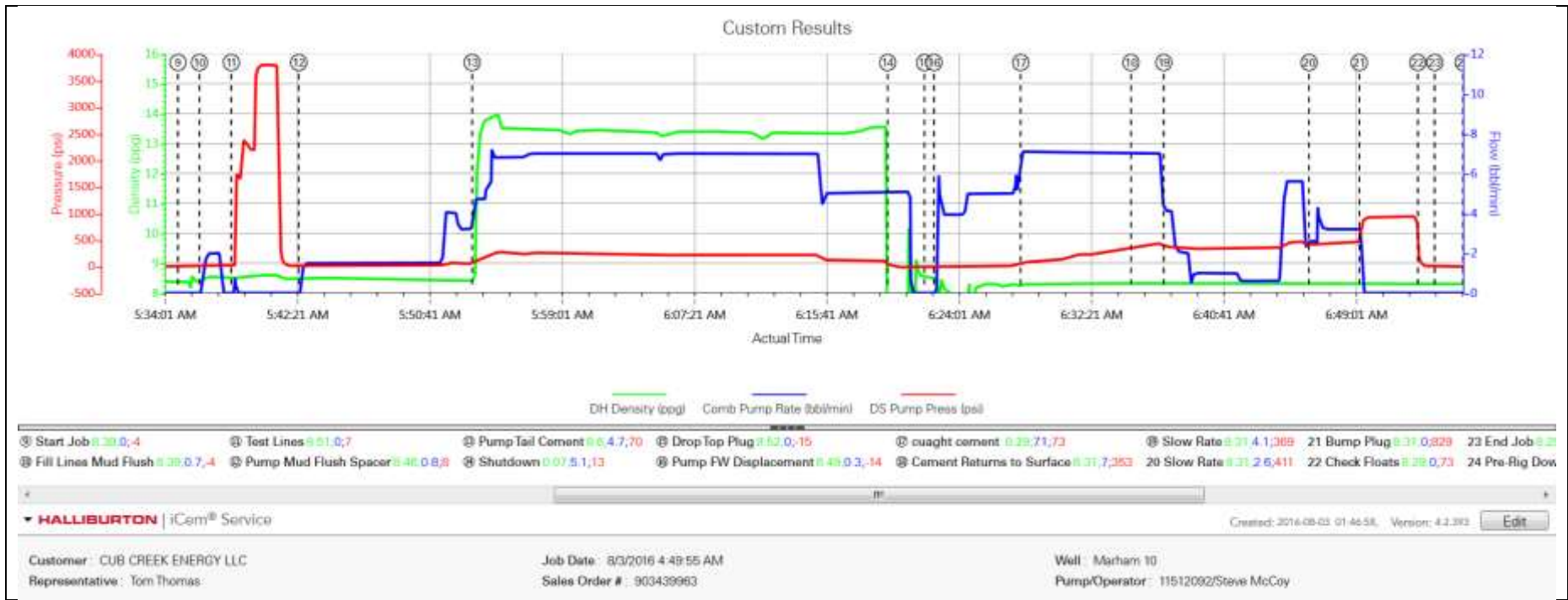
HALLIBURTON

*Cementing Job Summary*

Fluid #	Stage Type	Fluid Name	Qty	Qty UoM	Mixing Density lbm/gal	Yield ft <sup>3</sup> /sack	Mix Fluid Gal	Rate bbl/min	Total Mix Fluid Gal
3	13.5# SwiftCem	SWIFTCM (TM) SYSTEM	170	550sack	13.5	1.74			9.2
9.20 Gal		FRESH WATER							
Fluid #	Stage Type	Fluid Name	Qty	Qty UoM	Mixing Density lbm/gal	Yield ft <sup>3</sup> /sack	Mix Fluid Gal	Rate bbl/min	Total Mix Fluid Gal
4	Fresh Water Displacement	FW Displacement	114.5	bbl	8.4				
Cement Left In Pipe		Amount	44.11ft		Reason		Shoe Joint		
Mix Water: pH ##		Mix Water Chloride: ## ppm		Mix Water Temperature: ## °F °C					
Cement Temperature: ## °F °C		Plug Displaced by: ## lb/gal kg/m <sup>3</sup> XXXX		Disp. Temperature: ## °F °C					
Plug Bumped? Yes/No		Bump Pressure: #### psi MPa		Floats Held? Yes/No					
Cement Returns: ## bbl m <sup>3</sup>		Returns Density: ## lb/gal kg/m <sup>3</sup>		Returns Temperature: ## °F °C					
Comment									

3.0 Attachments

3.1 Case 1-Custom Results events.png



## 3.2 Case 1-Custom Results no events.png

