

The Road to Excellence Starts with Safety

Sold To #: 374215	Ship To #: 3744015	Quote #:	Sales Order #: 0903560526
Customer: CUB CREEK ENERGY LLC		Customer Rep: Scott Coburn	
Well Name: MARKHAM	Well #: 9	API/UWI #: 05-123-43246-00	
Field: WATTENBERG	City (SAP): MEAD	County/Parish: WELD	State: COLORADO
Legal Description: NW SE-32-4N-68W-2453FSL-1516FEL			
Contractor: XTREME DRLG		Rig/Platform Name/Num: XTREME 18	
Job BOM: 7523			
Well Type: HORIZONTAL OIL			
Sales Person: HALAMERICA\HX38199		Srvc Supervisor: Bradley Hinkle	

Job

Formation Name	
Formation Depth (MD)	Top
Form Type	BHST
Job depth MD	11983ft
Water Depth	Wk Ht Above Floor
Perforation Depth (MD)	From
	To

Well Data

Description	New / Used	Size in	ID in	Weight lbm/ft	Thread	Grade	Top MD ft	Bottom MD ft	Top TVD ft	Bottom TVD ft
Casing		9.625	8.921	36			0	1528		0
Casing		5.5	4.892	17			0	11975		0
Open Hole Section			8.5				1538	11983	0	0

Tools and Accessories

Type	Size in	Qty	Make	Depth ft	Type	Size in	Qty	Make
Guide Shoe	5.5				Top Plug	5.5	1	DTS
Float Shoe	5.5	1	DTS	11975	Bottom Plug	5.5	1	DTS
Float Collar	5.5	1	DTS	11955	SSR plug set	5.5		HES
Insert Float	5.5				Plug Container	5.5		HES
Stage Tool	5.5				Centralizers	5.5		HES

Fluid Data

Stage/Plug #: 1

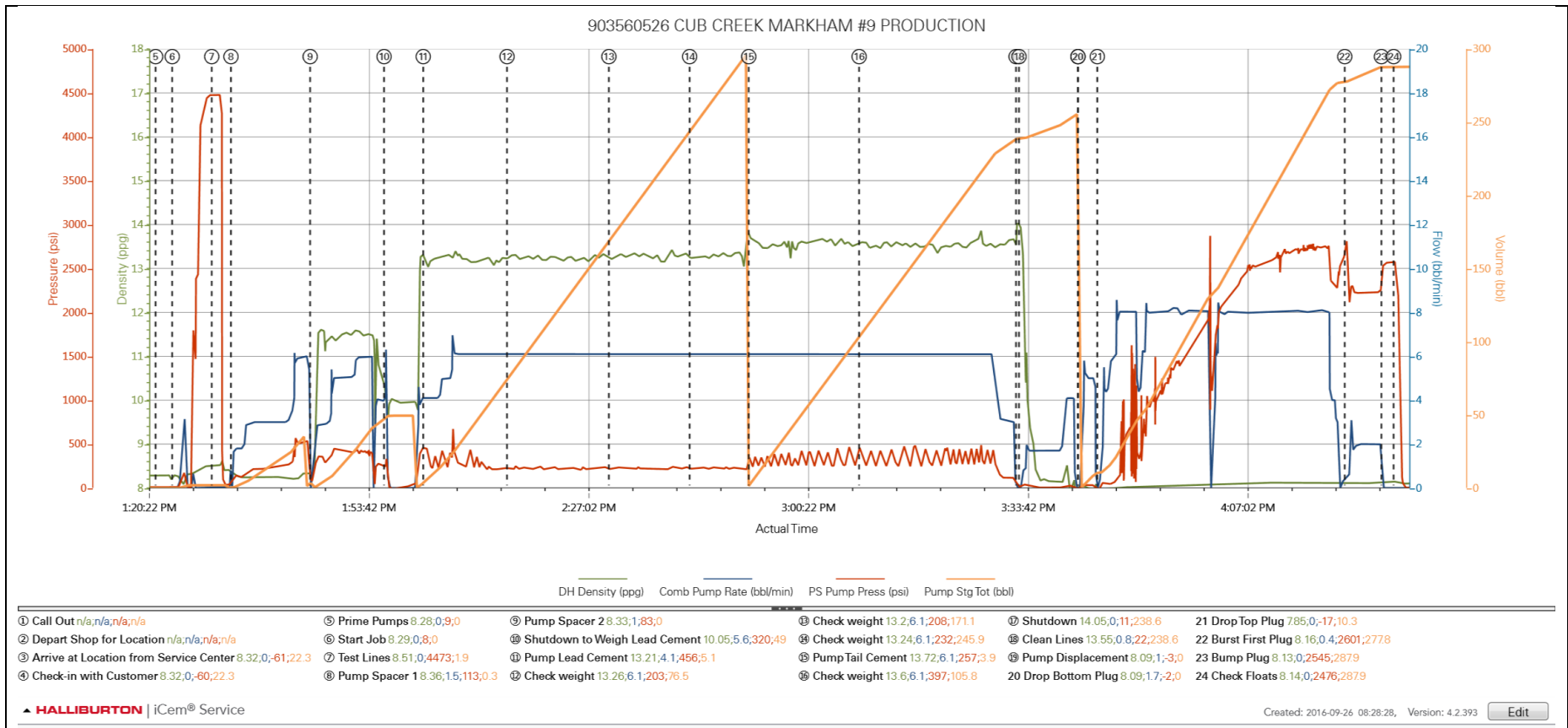
Fluid #	Stage Type	Fluid Name	Qty	Qty UoM	Mixing Density lbm/gal	Yield ft3/sack	Mix Fluid Gal	Rate bbl/min	Total Mix Fluid Gal
1	Spacer	Fresh Water	40	bbl	8.33			3	

Fluid #	Stage Type	Fluid Name	Qty	Qty UoM	Mixing Density lbm/gal	Yield ft3/sack	Mix Fluid Gal	Rate bbl/min	Total Mix Fluid Gal
2	11.5 lb/gal Tuned Spacer III	Tuned Spacer III	50	bbl	11.5	3.74		5	

149.34 lbm/bbl		BARITE, BULK (100003681)							
36 gal/bbl		FRESH WATER							
Fluid #	Stage Type	Fluid Name	Qty	Qty UoM	Mixing Density lbm/gal	Yield ft3/sack	Mix Fluid Gal	Rate bbl/min	Total Mix Fluid Gal
3	13.2# ElastiCem Lead	ELASTICEM (TM) SYSTEM	1100	sack	13.2	1.57		6	7.51
7.51 Gal		FRESH WATER							
Fluid #	Stage Type	Fluid Name	Qty	Qty UoM	Mixing Density lbm/gal	Yield ft3/sack	Mix Fluid Gal	Rate bbl/min	Total Mix Fluid Gal
4	13.5# EconoCem Tail	ECONOCEM (TM) SYSTEM	810	sack	13.5	1.68		6	7.99
7.99 Gal		FRESH WATER							
Fluid #	Stage Type	Fluid Name	Qty	Qty UoM	Mixing Density lbm/gal	Yield ft3/sack	Mix Fluid Gal	Rate bbl/min	Total Mix Fluid Gal
5	Fresh Water Displacement	Fresh Water	287	bbl	8.33			8	
Cement Left In Pipe		Amount	0 ft			Reason		Wet Shoe by Design	
Mix Water:		pH ##	Mix Water Chloride:## ppm			Mix Water Temperature:## °F °C			
Cement Temperature:## °F °C		Plug Displaced by:## lb/gal kg/m3 XXXX			Disp. Temperature:## °F °C				
Plug Bumped?Yes/No		Bump Pressure:#### psi MPa			Floats Held?Yes/No				
Cement Returns:## bbl m3		Returns Density:## lb/gal kg/m3			Returns Temperature:## °F °C				
Comment 50 bbls Tuned Spacer and 10 bbls Cement to surface.									

3.0 Attachments

3.1 Case 1-Custom Results.png



3.2 Case 1-Custom Results (1).png

