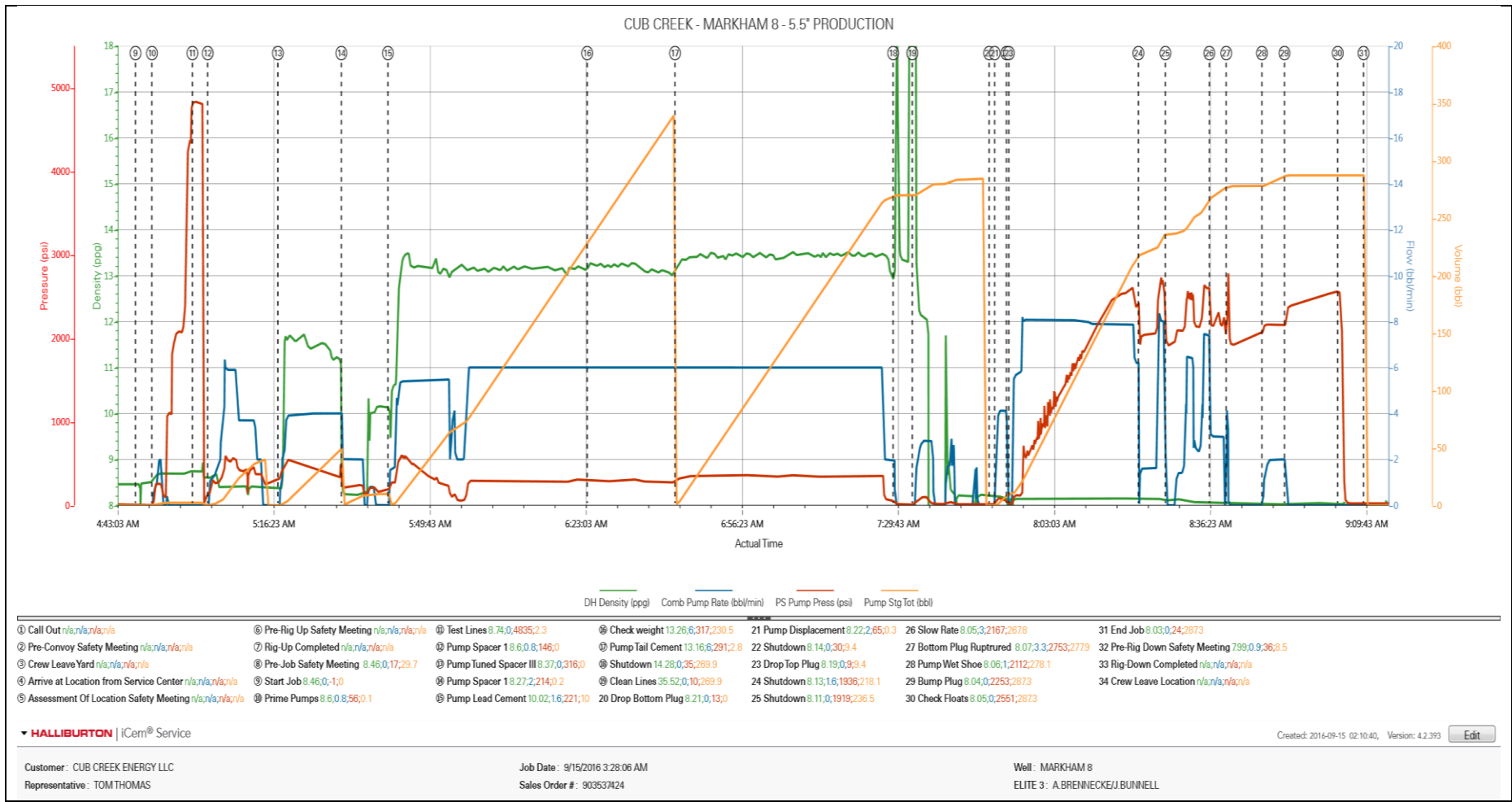


Sold To #: 374215		Ship To #: 3744018		Quote #:		Sales Order #: 0903537424					
Customer: CUB CREEK ENERGY LLC				Customer Rep:							
Well Name: MARKHAM			Well #: 8			API/UWI #: 05-123-43248-00					
Field: WATTENBERG		City (SAP): MEAD		County/Parish: WELD			State: COLORADO				
Legal Description: NW SE-32-4N-68W-2437FSL-1516FEL											
Contractor: XTREME DRLG				Rig/Platform Name/Num: XTREME 18							
Job BOM: 7523											
Well Type: HORIZONTAL OIL											
Sales Person: HALAMERICA\HX38199				Srv Supervisor: Andrew Brennecke							
Job											
Formation Name											
Formation Depth (MD)		Top		Bottom							
Form Type				BHST							
Job depth MD		12165ft		Job Depth TVD		7334					
Water Depth				Wk Ht Above Floor		3					
Perforation Depth (MD)		From		To							
Well Data											
Description	New / Used	Size in	ID in	Weight lbm/ft	Thread	Grade	Top MD ft	Bottom MD ft	Top TVD ft	Bottom TVD ft	
Casing		9.625	8.921	36			0	1529		0	
Casing		5.5	4.892	17		P-110	0	12153	7334	0	
Open Hole Section			8.75				1529	12165	0	0	
Tools and Accessories											
Type	Size in	Qty	Make	Depth ft		Type	Size in	Qty	Make		
Guide Shoe	5.5	1		12153		Top Plug	5.5	1			
Float Shoe						Bottom Plug	5.5	1			
Float Collar	5.5	1		12133.76		SSR plug set					
Insert Float						Plug Container	5.5	1	HES		
Stage Tool						Centralizers	5.5				
Fluid Data											
Stage/Plug #: 1											
Fluid #	Stage Type	Fluid Name			Qty	Qty UoM	Mixing Density lbm/gal	Yield ft ³ /sack	Mix Fluid Gal	Rate bbl/min	Total Mix Fluid Gal
1	Water				50	bbl	9.4			4	

Fluid #	Stage Type	Fluid Name	Qty	Qty UoM	Mixing Density lbm/gal	Yield ft3/sack	Mix Fluid Gal	Rate bbl/min	Total Mix Fluid Gal
2	11.5 lb/gal Tuned Spacer III	Tuned Spacer III	50	bbl	11.5	3.74		4	
149.34 lbm/bbl		BARITE, BULK (100003681)							
36 gal/bbl		FRESH WATER							
Fluid #	Stage Type	Fluid Name	Qty	Qty UoM	Mixing Density lbm/gal	Yield ft3/sack	Mix Fluid Gal	Rate bbl/min	Total Mix Fluid Gal
3	13.2# ElastiCem Lead	ELASTICEM (TM) SYSTEM	1225	sack	13.2	1.57		6	7.51
7.51 Gal		FRESH WATER							
Fluid #	Stage Type	Fluid Name	Qty	Qty UoM	Mixing Density lbm/gal	Yield ft3/sack	Mix Fluid Gal	Rate bbl/min	Total Mix Fluid Gal
4	13.5# EconoCem Tail	ECONOCEM (TM) SYSTEM	900	sack	13.5	1.68		6	8
8 Gal		FRESH WATER							
Fluid #	Stage Type	Fluid Name	Qty	Qty UoM	Mixing Density lbm/gal	Yield ft3/sack	Mix Fluid Gal	Rate bbl/min	Total Mix Fluid Gal
5	Fresh Water Displacement		281.5	bbl	8.4			8	
Cement Left In Pipe		Amount	17 ft		Reason		Shoe Joint		
Comment 30bbl of Cement to Surface and all Spacer									

3.0 Attachments

3.1 Case 1-Custom Results (1).png



3.2 Case 1-Custom Results (2).png

