

HALLIBURTON

## Cementing Job Summary

The Road to Excellence Starts with Safety

Sold To #: 374215		Ship To #: 3743883		Quote #:		Sales Order #: 0903546912				
Customer: CUB CREEK ENERGY LLC				Customer Rep: Scott Coburn						
Well Name: MARKHAM		Well #: 7		API/UWI #: 05-123-43245-00						
Field: WATTENBERG		City (SAP): MEAD		County/Parish: WELD		State: COLORADO				
Legal Description: NW SE-32-4N-68W-2421FSL-1516FEL										
Contractor: XTREME DRLG				Rig/Platform Name/Num: XTREME 18						
Job BOM: 7523										
Well Type: HORIZONTAL OIL										
Sales Person: HALAMERICA\HX38199				Srv Supervisor: Bradley Hinkle						
<b>Job</b>										
Formation Name										
Formation Depth (MD)		Top		Bottom						
Form Type				BHST						
Job depth MD		12019ft		Job Depth TVD						
Water Depth				Wk Ht Above Floor						
Perforation Depth (MD)		From		To						
<b>Well Data</b>										
Description	New / Used	Size in	ID in	Weight lbm/ft	Thread	Grade	Top MD ft	Bottom MD ft	Top TVD ft	Bottom TVD ft
Casing		9.625	8.921	36			0	1529		0
Casing		5.5	4.892	17			0	12019		0
Open Hole Section			8.50				1539	12030	0	0
<b>Tools and Accessories</b>										
Type	Size in	Qty	Make	Depth ft		Type	Size in	Qty	Make	
Guide Shoe	5.5					Top Plug	5.5	1	DTS	
Float Shoe	5.5		DTS	12019		Bottom Plug	5.5	1	DTS	
Float Collar	5.5	1	DTS	12000		SSR plug set	5.5		HES	
Insert Float	5.5					Plug Container	5.5		HES	
Stage Tool	5.5					Centralizers	5.5		HES	
<b>Fluid Data</b>										
Stage/Plug #: 1										
Fluid #	Stage Type	Fluid Name	Qty	Qty UoM	Mixing Density lbm/gal	Yield ft <sup>3</sup> /sack	Mix Fluid Gal	Rate bbl/min	Total Mix Fluid Gal	
1	Water	Water	40	bbl	8.33					
<b>Fluid Data</b>										
Fluid #	Stage Type	Fluid Name	Qty	Qty UoM	Mixing Density lbm/gal	Yield ft <sup>3</sup> /sack	Mix Fluid Gal	Rate bbl/min	Total Mix Fluid Gal	
2	11.5 lb/gal Tuned Spacer III	Tuned Spacer III	50	bbl	11.5	3.74		5		

last updated on 9/21/2016 8:06:23 AM

Page 1 of 2

iCem® Service

(v. 4.2.393)

Created: Saturday, September 24, 2016

HALLIBURTON

*Cementing Job Summary*

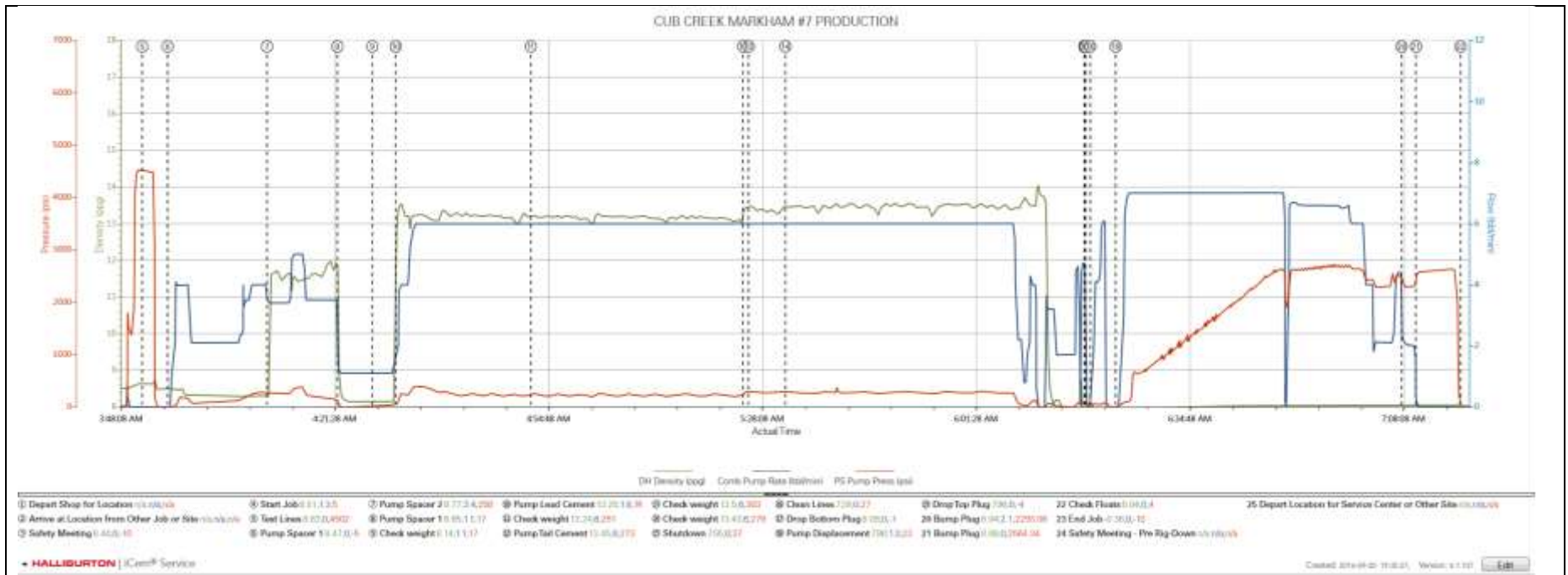
149.34 lbm/bbl		BARITE, BULK (100003681)							
36 gal/bbl		FRESH WATER							
Fluid #	Stage Type	Fluid Name	Qty	Qty UoM	Mixing Density lbm/gal	Yield ft <sup>3</sup> /sack	Mix Fluid Gal	Rate bbl/min	Total Mix Fluid Gal
3	Water	Water	10	bbl	8.33				
Fluid #	Stage Type	Fluid Name	Qty	Qty UoM	Mixing Density lbm/gal	Yield ft <sup>3</sup> /sack	Mix Fluid Gal	Rate bbl/min	Total Mix Fluid Gal
4	13.2# ElasticCem Lead	ELASTICEM (TM) SYSTEM	1200	sack	13.2	1.57		5	7.51
7.51 Gal		FRESH WATER							
Fluid #	Stage Type	Fluid Name	Qty	Qty UoM	Mixing Density lbm/gal	Yield ft <sup>3</sup> /sack	Mix Fluid Gal	Rate bbl/min	Total Mix Fluid Gal
5	13.5# EconoCem Tail	ECONOCEM (TM) SYSTEM	900	sack	13.5	1.68		5	8
8 Gal		FRESH WATER							
Fluid #	Stage Type	Fluid Name	Qty	Qty UoM	Mixing Density lbm/gal	Yield ft <sup>3</sup> /sack	Mix Fluid Gal	Rate bbl/min	Total Mix Fluid Gal
6	Fresh Water Displacement		287	bbl	8.33				
Cement Left in Pipe	Amount	ft	Reason				Wet Shoe by Design		
Mix Water: pH ##	Mix Water Chloride: ## ppm		Mix Water Temperature: ## °F °C						
Cement Temperature: ## °F °C	Plug Displaced by: ## lb/gal kg/m <sup>3</sup> XXXX				Disp. Temperature: ## °F °C				
Plug Bumped? Yes/No	Bump Pressure: #### psi MPa				Floats Held? Yes/No				
Cement Returns: ## bbl m <sup>3</sup>	Returns Density: ## lb/gal kg/m <sup>3</sup>				Returns Temperature: ## °F °C				
Comment 30 bbls of cement to surface.									

iCem® Service

(v. 4.2.393)

## 3.0 Attachments

### 3.1 Cub Creek Markham #7 Production.png



## 3.2 Displacement, Plug Burst and Bump Plug.png

