

HALLIBURTON

Cementing Job Summary

Sold To #: 374215 **Ship To #:** 3744017 **The Road to Excellence Starts with Safety**

Customer: CUB CREEK ENERGY LLC **Quote #:** **Sales Order #:** 0903523680

Well Name: MARKHAM **Field:** WATTENBERG **City (SAP):** MEAD **Well #:** 6 **Customer Rep:** Tom Thomas **API/UWI #:** 05-123-43244-00

Legal Description: NW SE-32-4N-68W-2405FSL-1515FEL **County/Parish:** WELD **State:** COLORADO

Contractor: XTREME DRLG **Job BOM:** 7523 **Rig/Platform Name/Num:** XTREME 18

Well Type: HORIZONTAL OIL **Sales Person:** HALAMERICA/HB13261 **Srv Supervisor:** Brandon Parker

Job

Formation Name	Formation Depth (MD)	Form Type	Job depth MD	Water Depth	Perforation Depth (MD)	Bottom	Job Depth TVD	Wk Ht Above Floor
	Top		12014ft		From	BHST		4
					To			

Well Data										
Description	New / Used	Size in	ID in	Weight lbm/ft	Thread	Grade	Top MD ft	Bottom MD ft	Top TVD ft	Bottom TVD ft
Casing		9.625	8.921	36			0	1551		0
Casing		5.5	4.892	17			0	12014		0
Open Hole Section			8.75				1551	12014	0	0

Tools and Accessories									
Type	Size in	Qty	Make	Depth ft	Type	Size in	Qty	Make	
Guide Shoe	5.5		1	12014	Top Plug	5.5	1	lynch	
Float Shoe	5.5				Bottom Plug	5.5		HES	
Float Collar	5.5		1	11994	SSR plug set	5.5		HES	
Insert Float	5.5				Plug Container	5.5	1	HES	
Stage Tool	5.5				Centralizers	5.5		HES	

Fluid Data									
Stage/Plug #: 1									
Fluid #	Stage Type	Fluid Name	Qty	Qty UoM	Mixing Density lbm/gal	Yield ft ³ /sack	Mix Fluid Gal	Rate bbl/min	Total Mix Fluid Gal
1	FW	FW	40	bbl	8.3				

Fluid Data									
Fluid #2									
Fluid #2	Stage Type	Fluid Name	Qty	Qty UoM	Mixing Density lbm/gal	Yield ft ³ /sack	Mix Fluid Gal	Rate bbl/min	Total Mix Fluid Gal
2	11.5 lb/gal Tuned Spacer III	Tuned Spacer III	50	bbl	11.5	3.74		3	

last updated on 9/10/2016 1:41:13 AM

Page 1 of 2

iCem® Service

(v. 4.2.393)

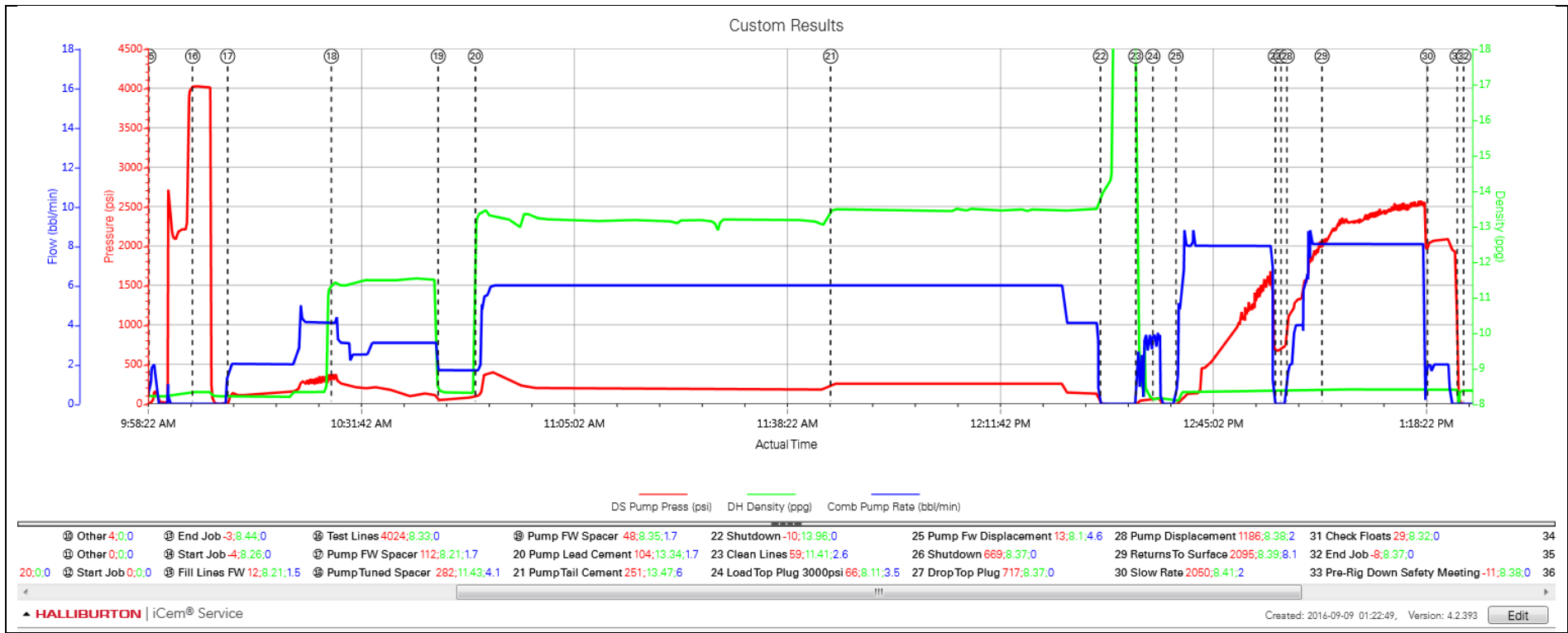
HALLIBURTON

Cementing Job Summary

149.34 lbm/bbl		BARITE, BULK (100003681)							
36.09 gal/bbl		FRESH WATER							
Fluid #	Stage Type	Fluid Name	Qty	Qty UoM	Mixing Density lbm/gal	Yield ft3/sack	Mix Fluid Gal	Rate bbl/min	Total Mix Fluid Gal
3	13.2# ElastiCem Lead	ELASTICEM (TM) SYSTEM	341	1220sack	13.2	1.57		6	7.51
7.51 Gal		FRESH WATER							
Fluid #	Stage Type	Fluid Name	Qty	Qty UoM	Mixing Density lbm/gal	Yield ft3/sack	Mix Fluid Gal	Rate bbl/min	Total Mix Fluid Gal
4	13.5# EconoCem Tail	ECONOCEM (TM) SYSTEM	254	850sack	13.5	1.68		6	8
8 Gal		FRESH WATER							
Fluid #	Stage Type	Fluid Name	Qty	Qty UoM	Mixing Density lbm/gal	Yield ft3/sack	Mix Fluid Gal	Rate bbl/min	Total Mix Fluid Gal
5	Fresh Water Displacement		390	bbl	8.4				
Cement Left In Pipe		Amount	ft 19.58		Reason		Shoe Joint		
Mix Water:pH ##		Mix Water Chloride:## ppm		Mix Water Temperature:## °F °C					
Cement Temperature:## °F °C		Plug Displaced by:## lb/gal kg/m3 XXXX		Disp. Temperature:## °F °C					
Plug Bumped?Yes/No		Bump Pressure:#### psi MPa		Floats Held?Yes/No					
Cement Returns:## bbl m3		Returns Density:## lb/gal kg/m3		Returns Temperature:## °F °C					
Comment									

3.0 Attachments

3.1 Custom Results – Job Chart with Events



3.2 Custom Results – Job Chart without Events

