

HALLIBURTON

Cementing Job Summary

The Road to Excellence Starts with Safety

Sold To #: 374215		Ship To #: 3744016		Quote #: 0022208103		Sales Order #: 0903511720				
Customer: CUB CREEK ENERGY LLC				Customer Rep: Siji						
Well Name: MARKHAM		Well #: 4		API/UWI #: 05-123-43243-00						
Field: WATTENBERG		City (SAP): MEAD		County/Parish: WELD		State: COLORADO				
Legal Description: NW SE-32-4N-68W-2373FSL-1515FEL										
Contractor: XTREME DRLG				Rig/Platform Name/Num: XTREME 18						
Job BOM: 7523										
Well Type: HORIZONTAL OIL										
Sales Person: HALAMERICA\HB71271				Srv Supervisor: Bradley Hinkle						
Job										
Formation Name										
Formation Depth (MD)		Top		Bottom						
Form Type				BHST						
Job depth MD		12043ft		Job Depth TVD						
Water Depth				Wk Ht Above Floor						
Perforation Depth (MD)		From		To						
Well Data										
Description	New / Used	Size in	ID in	Weight lbm/ft	Thread	Grade	Top MD ft	Bottom MD ft	Top TVD ft	Bottom TVD ft
Casing		9.625	8.921	36			0	1523		0
Casing		5.5	4.892	17			0	12043		0
Open Hole Section			8.75				1534	12055	0	0
Tools and Accessories										
Type	Size in	Qty	Make	Depth ft		Type	Size in	Qty	Make	
Guide Shoe	5.5			12043		Top Plug	5.5	1	DTT	
Float Shoe	5.5					Bottom Plug	5.5	1	DTT	
Float Collar	5.5			12024		SSR plug set	5.5		HES	
Insert Float	5.5					Plug Container	5.5		HES	
Stage Tool	5.5					Centralizers	5.5		HES	
Fluid Data										
Stage/Plug #: 1										
Fluid #	Stage Type	Fluid Name	Qty	Qty UoM	Mixing Density lbm/gal	Yield ft3/sack	Mix Fluid Gal	Rate bbl/min	Total Mix Fluid Gal	
1	SPACER	FRESH WATER	30	bbl	8.33					
Stage/Plug #: 2										
Fluid #	Stage Type	Fluid Name	Qty	Qty UoM	Mixing Density lbm/gal	Yield ft3/sack	Mix Fluid Gal	Rate bbl/min	Total Mix Fluid Gal	
2	11.5 lb/gal Tuned Spacer III	Tuned Spacer III	50	bbl	11.5	3.74		5		

last updated on 9/3/2016 12:38:33 PM

Page 1 of 2

iCem® Service

(v. 4.2.393)

Created: Tuesday, September 06, 2016

HALLIBURTON

Cementing Job Summary

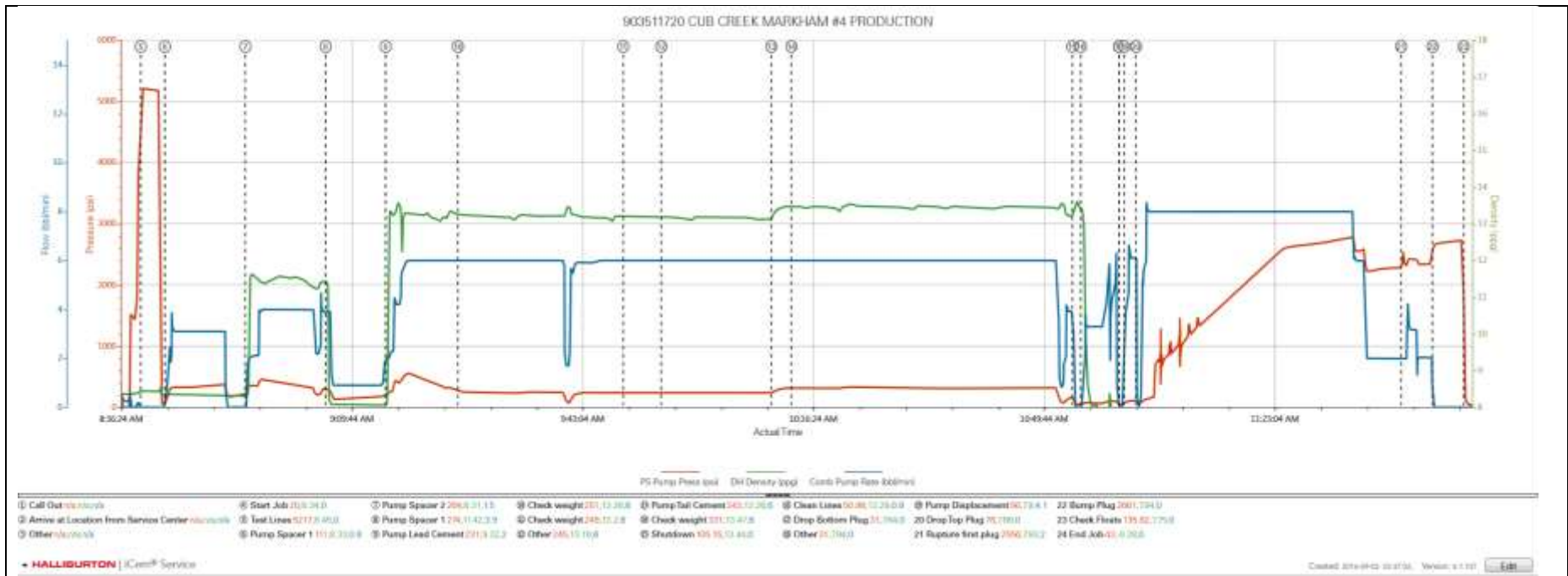
149.34 lbm/bbl		BARITE, BULK (100003681)							
36.09 gal/bbl		FRESH WATER							
Fluid #	Stage Type	Fluid Name	Qty	Qty UoM	Mixing Density lbm/gal	Yield ft3/sack	Mix Fluid Gal	Rate bbl/min	Total Mix Fluid Gal
3	13.2# Elasticem Lead	ELASTICEM (TM) SYSTEM	1200	sack	13.2	1.57		5	7.51
7.51 Gal		FRESH WATER							
Fluid #	Stage Type	Fluid Name	Qty	Qty UoM	Mixing Density lbm/gal	Yield ft3/sack	Mix Fluid Gal	Rate bbl/min	Total Mix Fluid Gal
4	13.5# EconoCem Tail	ECONOCEM (TM) SYSTEM	875	sack	13.5	1.68		5	8
8 Gal		FRESH WATER							
Fluid #	Stage Type	Fluid Name	Qty	Qty UoM	Mixing Density lbm/gal	Yield ft3/sack	Mix Fluid Gal	Rate bbl/min	Total Mix Fluid Gal
5	Fresh Water Displacement	FRESH WATER	279	bbl	8.33				
Cement Left In Pipe		Amount	ft	Reason			Shoe Joint		
Mix Water: pH ##		Mix Water Chloride:## ppm				Mix Water Temperature:## °F °C			
Cement Temperature:## °F °C		Plug Displaced by:## lb/gal kg/m3 XXXX				Disp. Temperature:## °F °C			
Plug Bumped? Yes/No		Bump Pressure:#### psi MPa				Floats Held? Yes/No			
Cement Returns:## bbl m3		Returns Density:## lb/gal kg/m3				Returns Temperature:## °F °C			
Comment 50 BBLs SPACER AND 30 BBLs CEMENT TO SURFACE									

iCem® Service

(v. 4.2.393)

3.0 Attachments

3.1 903511720 Cub Creek Markham #4 Production.png



3.2 Displacement, plug rupture and bump plug.png

