

*The Road to Excellence Starts with Safety*

Sold To #: 374215	Ship To #: 3744016	Quote #:	Sales Order #: 0903443166
Customer: CUB CREEK ENERGY LLC		Customer Rep: TOM THOMAS	
Well Name: MARKHAM	Well #: 4	API/UWI #: 05-123-43243-00	
Field: WATTENBERG	City (SAP): MEAD	County/Parish: WELD	State: COLORADO
Legal Description: NW SE-32-4N-68W-2373FSL-1515FEL			
Contractor: XTREME DRLG		Rig/Platform Name/Num: XTREME 18	
Job BOM: 7521			
Well Type: HORIZONTAL OIL			
Sales Person: HALAMERICA\HB71271		Srv Supervisor: Shayne Bitton	

**Job**

Formation Name			
Formation Depth (MD)	Top		Bottom
Form Type			BHST
Job depth MD	1535ft		Job Depth TVD
Water Depth			Wk Ht Above Floor
Perforation Depth (MD)	From		To

**Well Data**

Description	New / Used	Size in	ID in	Weight lbm/ft	Thread	Grade	Top MD ft	Bottom MD ft	Top TVD ft	Bottom TVD ft
Open Hole Section			13.5				0	1535		
Casing		9.625	8.921	36		J-55	0	1525		

**Tools and Accessories**

Type	Size in	Qty	Make	Depth ft		Type	Size in	Qty	Make
Guide Shoe	9.625			1525		Top Plug	9.625		HES
Float Shoe	9.625					Bottom Plug	9.625		HES
Float Collar	9.625					SSR plug set	9.625		HES
Insert Float	9.625					Plug Container	9.625		HES
Stage Tool	9.625					Centralizers	9.625		HES

**Fluid Data**

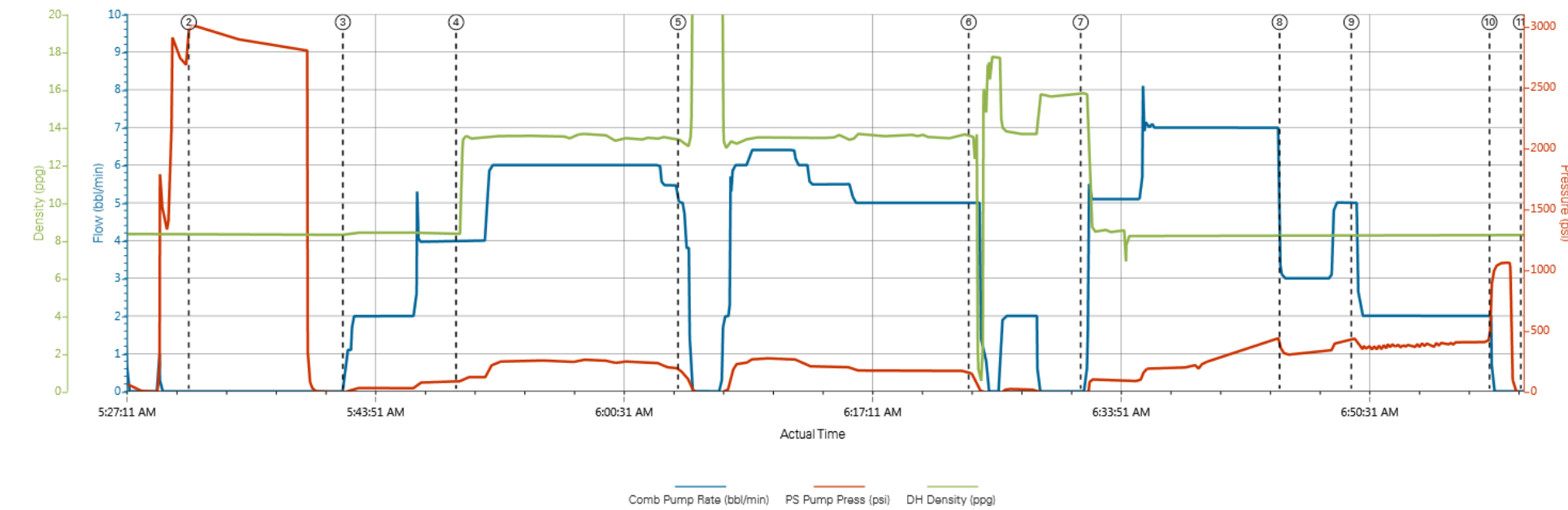
Stage/Plug #: 1

Fluid #	Stage Type	Fluid Name	Qty	Qty UoM	Mixing Density lbm/gal	Yield ft3/sack	Mix Fluid Gal	Rate bbl/min	Total Mix Fluid Gal
1	Mud Flush III (Powder)	Mud Flush III	20	bbl	8.4				
42 gal/bbl		FRESH WATER							

Fluid #	Stage Type	Fluid Name	Qty	Qty UoM	Mixing Density lbm/gal	Yield ft3/sack	Mix Fluid Gal	Rate bbl/min	Total Mix Fluid Gal
2	13.5# SwiftCem	SWIFTCM (TM) SYSTEM	550	sack	13.5	1.74			9.19
9.19 Gal		FRESH WATER							

Fluid #	Stage Type	Fluid Name	Qty	Qty UoM	Mixing Density lbm/gal	Yield ft <sup>3</sup> /sack	Mix Fluid Gal	Rate bbl/min	Total Mix Fluid Gal
3	Fresh Water Displacement		114	bbl	8.4				
Cement Left In Pipe		Amount	42 ft		Reason			Shoe Joint	
Mix Water:		pH ##	Mix Water Chloride:## ppm		Mix Water Temperature:## °F °C				
Cement Temperature:## °F °C		Plug Displaced by:## lb/gal kg/m3 XXXX			Disp. Temperature:## °F °C				
Plug Bumped?		Yes/No	Bump Pressure:#### psi MPa			Floats Held?Yes/No			
Cement Returns:## bbl m3		Returns Density:## lb/gal kg/m3			Returns Temperature:## °F °C				
Comment									

Custom Results



Custom Results

