

The Road to Excellence Starts with Safety

Sold To #: 374215	Ship To #: 3743822	Quote #: 0022208185	Sales Order #: 0903442663
Customer: CUB CREEK ENERGY LLC		Customer Rep: Siji	
Well Name: MARKHAM	Well #: 3	API/UWI #: 05-123-43249-00	
Field: WATTENBERG	City (SAP): MEAD	County/Parish: WELD	State: COLORADO
Legal Description: NW SE-32-4N-68W-2357FSL-1515FEL			
Contractor: XTREME DRLG		Rig/Platform Name/Num: XTREME 18	
Job BOM: 7521			
Well Type: HORIZONTAL OIL			
Sales Person: HALAMERICA\HB71271		Srcv Supervisor: Andrew Stahlke	

Job

Formation Name	
Formation Depth (MD)	Top Bottom
Form Type	BHST
Job depth MD	1550ft Job Depth TVD
Water Depth	Wk Ht Above Floor 3
Perforation Depth (MD)	From To

Well Data

Description	New / Used	Size in	ID in	Weight lbm/ft	Thread	Grade	Top MD ft	Bottom MD ft	Top TVD ft	Bottom TVD ft
Open Hole Section			13.5				0	1550		
Casing		9.625	8.921	36			0	1540		

Tools and Accessories

Type	Size in	Qty	Make	Depth ft	Type	Size in	Qty	Make
Guide Shoe	9.625			1540	Top Plug	9.625	1	Antelope
Float Shoe	9.625				Bottom Plug	9.625		
Float Collar	9.625				SSR plug set	9.625		HES
Insert Float	9.625				Plug Container	9.625		HES
Stage Tool	9.625				Centralizers	9.625		HES

Fluid Data

Stage/Plug #: 1

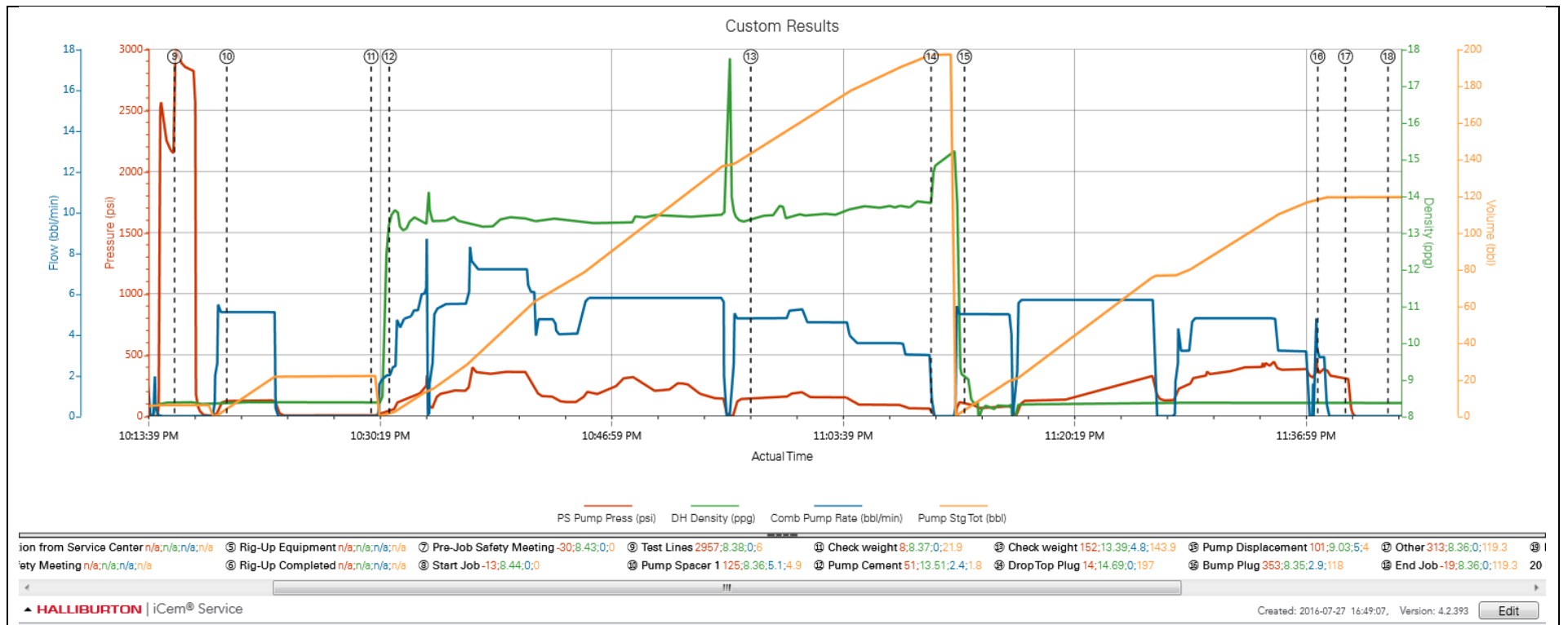
Fluid #	Stage Type	Fluid Name	Qty	Qty UoM	Mixing Density lbm/gal	Yield ft ³ /sack	Mix Fluid Gal	Rate bbl/min	Total Mix Fluid Gal
1	Water Based Mud		0	bbl	9.4				

Fluid #	Stage Type	Fluid Name	Qty	Qty UoM	Mixing Density lbm/gal	Yield ft ³ /sack	Mix Fluid Gal	Rate bbl/min	Total Mix Fluid Gal
2	Mud Flush III (Powder)	Mud Flush III	20	bbl	8.4				
42 gal/bbl			FRESH WATER						

Fluid #	Stage Type	Fluid Name	Qty	Qty UoM	Mixing Density lbm/gal	Yield ft ³ /sack	Mix Fluid Gal	Rate bbl/mi n	Total Mix Fluid Gal
3	13.5# SwiftCem	SWIFTCEM (TM) SYSTEM	550	sack	13.5	1.74		5	9.19
9.17 Gal		FRESH WATER							
Fluid #	Stage Type	Fluid Name	Qty	Qty UoM	Mixing Density lbm/gal	Yield ft ³ /sack	Mix Fluid Gal	Rate bbl/mi n	Total Mix Fluid Gal
4	Fresh Water Displacement		115	bbl	8.4				
Cement Left In Pipe	Amount	ft	Reason					Shoe Joint	
Mix Water: pH	##		Mix Water Chloride:	##	ppm	Mix Water Temperature:	##	°F °C	
Cement Temperature:	##	°F °C	Plug Displaced by:	##	lb/gal kg/m ³ XXXX	Disp. Temperature:	##	°F °C	
Plug Bumped?	Yes/No		Bump Pressure:	#####	psi MPa	Floats Held?	Yes/No		
Cement Returns:	##	bbl m ³	Returns Density:	##	lb/gal kg/m ³	Returns Temperature:	##	°F °C	
Comment									

3.0 Attachments

3.1 Custom Results – Job Chart with Events



3.2 Custom Results – Job Chart without Events

