



**Cementing Job Summary**

*The Road to Excellence Starts with Safety*

Sold To #: 374215	Ship To #: 3759404	Quote #:	Sales Order #: 0503554366
Customer: CUB CREEK ENERGY LLC		Customer Rep: Tom Thomas	
Well Name: MARKHAM	Well #: 2	API/UWI #: 05-123-43649-00	
Field: WATTENBERG	City (SAP): MEAD	County/Parish: WELD	State: COLORADO
Legal Description: NW SE-32-4N-68W-2341FSL-1514FEL			
Contractor: XTREME DRLG		Rig/Platform Name/Num: XTREME 18	
Job BOM: 7523			
Well Type: HORIZONTAL OIL			
Sales Person: HALAMERICA\HX38199		Srvc Supervisor: Bradley Hinkle	
<b>Job</b>			

Formation Name			
Formation Depth (MD)	Top	Bottom	
Form Type	BHST		
Job depth MD	12384ft	Job Depth TVD	6987
Water Depth	Wk Ht Above Floor		
Perforation Depth (MD)	From	To	

Well Data										
Description	New / Used	Size in	ID in	Weight lbm/ft	Thread	Grade	Top MD ft	Bottom MD ft	Top TVD ft	Bottom TVD ft
Casing		9.625	8.921	36			0	1528		0
Casing		5.5	4.892	17			0	12384	0	0
Open Hole Section			8.5				1528	12395	0	0

Tools and Accessories									
Type	Size in	Qty	Make	Depth ft	Type	Size in	Qty	Make	
Guide Shoe	5.5				Top Plug	5.5	1	DTS	
Float Shoe	5.5	1	DTS	12384	Bottom Plug	5.5	1	DTS	
Float Collar	5.5	1	DTS	12385	SSR plug set	5.5		HES	
Insert Float	5.5				Plug Container	5.5		HES	
Stage Tool	5.5				Centralizers	5.5		HES	

Fluid Data										
Stage/Plug #: 1										
Fluid #	Stage Type	Fluid Name	Qty	Qty UoM	Mixing Density lbm/gal	Yield f3/sack	Mix Fluid Gal	Rate bbl/min	Total Mix Fluid Gal	
1	Fresh Water Spacer		40	bbl	8.33			4		
Fluid #	Stage Type	Fluid Name	Qty	Qty UoM	Mixing Density lbm/gal	Yield f3/sack	Mix Fluid Gal	Rate bbl/min	Total Mix Fluid Gal	

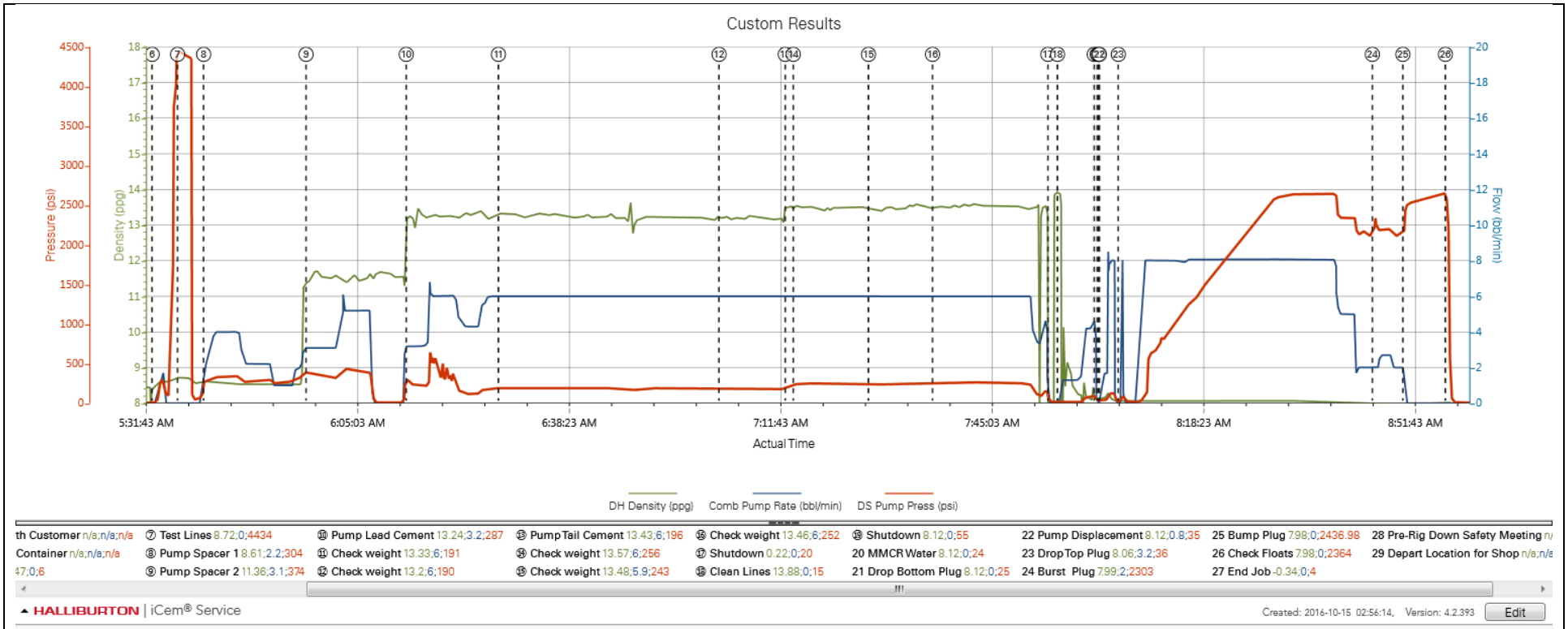
**HALLIBURTON**

**Cementing Job Summary**

2	11.5 lb/gal Tuned Spacer III	Tuned Spacer III	50	bbl	11.5	3.74	24.1	5		
149.34 lbm/bbl		BARITE, BULK (100003681)								
36 gal/bbl		FRESH WATER								
<b>Fluid #</b>	<b>Stage Type</b>	<b>Fluid Name</b>	<b>Qty</b>	<b>Qty UoM</b>	<b>Mixing Density lbm/gal</b>	<b>Yield ft<sup>3</sup>/sack</b>	<b>Mix Fluid Gal</b>	<b>Rate bbl/min</b>	<b>Total Mix Fluid Gal</b>	
3	13.2# Elasticem Lead	ELASTICEM (TM) SYSTEM	1200	sack	13.2	1.57	7.51	6	9012	
7.51 Gal		FRESH WATER								
<b>Fluid #</b>	<b>Stage Type</b>	<b>Fluid Name</b>	<b>Qty</b>	<b>Qty UoM</b>	<b>Mixing Density lbm/gal</b>	<b>Yield ft<sup>3</sup>/sack</b>	<b>Mix Fluid Gal</b>	<b>Rate bbl/min</b>	<b>Total Mix Fluid Gal</b>	
4	13.5# EconoCem Tail	ECONOCEM (TM) SYSTEM	800	sack	13.5	1.68	8	6	6400	
8 Gal		FRESH WATER								
<b>Fluid #</b>	<b>Stage Type</b>	<b>Fluid Name</b>	<b>Qty</b>	<b>Qty UoM</b>	<b>Mixing Density lbm/gal</b>	<b>Yield ft<sup>3</sup>/sack</b>	<b>Mix Fluid Gal</b>	<b>Rate bbl/min</b>	<b>Total Mix Fluid Gal</b>	
5	MMCR Displacement		10	bbl	8.4			4		
0.010340 gal/bbl		BE-7, TOTE TANK (101649552)								
<b>Fluid #</b>	<b>Stage Type</b>	<b>Fluid Name</b>	<b>Qty</b>	<b>Qty UoM</b>	<b>Mixing Density lbm/gal</b>	<b>Yield ft<sup>3</sup>/sack</b>	<b>Mix Fluid Gal</b>	<b>Rate bbl/min</b>	<b>Total Mix Fluid Gal</b>	
6	Displacement	Displacement	277	bbl	8.33			8		
0.034480 gal/bbl		CLA-WEB - BULK (101985043)								
<b>Cement Left In Pipe</b>	<b>Amount</b>	0 ft				<b>Reason</b>			Wet Shoe by Design	
<b>Mix Water: pH ##</b>	<b>Mix Water Chloride: ## ppm</b>				<b>Mix Water Temperature: ## °F °C</b>					
<b>Cement Temperature: ## °F °C</b>	<b>Plug Displaced by: ## lb/gal kg/m3 XXXX</b>				<b>Disp. Temperature: ## °F °C</b>					
<b>Plug Bumped? Yes/No</b>	<b>Bump Pressure: ### psi MPa</b>				<b>Floats Held? Yes/No</b>					
<b>Cement Returns: ## bbl m3</b>	<b>Returns Density: ## lb/gal kg/m3</b>				<b>Returns Temperature: ## °F °C</b>					
Comment 50 bbls Tuned Spacer and 40 bbls Cement to surface.										

3.0 Attachments

3.1 Custom Results – Job Chart with Events



3.2 Custom Results – Job Chart without Events

