

*The Road to Excellence Starts with Safety*

Sold To #: 374215	Ship To #: 3759400	Quote #:	Sales Order #: 0903607401
Customer: CUB CREEK ENERGY LLC		Customer Rep: .	
Well Name: MARKHAM	Well #: 1	API/UWI #: 05-123-43650-00	
Field: WATTENBERG	City (SAP): MEAD	County/Parish: WELD	State: COLORADO
Legal Description: NW SE-32-4N-68W-2325FSL-1514FEL			
Contractor: XTREME DRLG		Rig/Platform Name/Num: XTREME 18	
Job BOM: 7523			
Well Type: HORIZONTAL OIL			
Sales Person: HALAMERICA\HX38199		Srvc Supervisor: Nathaniel Moore	

**Job**

Formation Name			
Formation Depth (MD)	Top		Bottom
Form Type	BHST		
Job depth MD	12202ft		Job Depth TVD
Water Depth			Wk Ht Above Floor
Perforation Depth (MD)	From		To

**Well Data**

Description	New / Used	Size in	ID in	Weight lbm/ft	Thread	Grade	Top MD ft	Bottom MD ft	Top TVD ft	Bottom TVD ft
Casing		9.625	8.921	36			0	1527		1527
Casing		5.5	4.892	17			0	12191	0	7068
Open Hole Section			8.5				1527	12202	0	7068

**Tools and Accessories**

Type	Size in	Qty	Make	Depth ft	Type	Size in	Qty	Make
Guide Shoe	5.5			12191	Top Plug	5.5		HES
Float Shoe	5.5				Bottom Plug	5.5		HES
Float Collar	5.5				SSR plug set	5.5		HES
Insert Float	5.5				Plug Container	5.5		HES
Stage Tool	5.5				Centralizers	5.5		HES

**Fluid Data**

Stage/Plug #: 1										
Fluid #	Stage Type	Fluid Name	Qty	Qty UoM	Mixing Density lbm/gal	Yield ft3/sack	Mix Fluid Gal	Rate bbl/min	Total Mix Fluid Gal	
1	Fresh Water Spacer		40	bbl	8.33			5		

Fluid #	Stage Type	Fluid Name	Qty	Qty UoM	Mixing Density lbm/gal	Yield ft3/sack	Mix Fluid Gal	Rate bbl/min	Total Mix Fluid Gal
2	11.5 lb/gal Tuned Spacer III	Tuned Spacer III	50	bbl	11.5	3.74		5	
149.34 lbm/bbl		<b>BARITE, BULK (100003681)</b>							
36 gal/bbl		<b>FRESH WATER</b>							
Fluid #	Stage Type	Fluid Name	Qty	Qty UoM	Mixing Density lbm/gal	Yield ft3/sack	Mix Fluid Gal	Rate bbl/min	Total Mix Fluid Gal
3	13.2# ElastiCem Lead	ELASTICEM (TM) SYSTEM	1160	sack	13.2	1.57		5	7.51
7.51 Gal		<b>FRESH WATER</b>							
Fluid #	Stage Type	Fluid Name	Qty	Qty UoM	Mixing Density lbm/gal	Yield ft3/sack	Mix Fluid Gal	Rate bbl/min	Total Mix Fluid Gal
4	13.5# EconoCem Tail	ECONOCEM (TM) SYSTEM	800	sack	13.5	1.68		5	8
8 Gal		<b>FRESH WATER</b>							
Fluid #	Stage Type	Fluid Name	Qty	Qty UoM	Mixing Density lbm/gal	Yield ft3/sack	Mix Fluid Gal	Rate bbl/min	Total Mix Fluid Gal
5	MMCR Displacement		10	bbl	8.4			8	
0.010340 gal/bbl		<b>BE-7, TOTE TANK (101649552)</b>							
Fluid #	Stage Type	Fluid Name	Qty	Qty UoM	Mixing Density lbm/gal	Yield ft3/sack	Mix Fluid Gal	Rate bbl/min	Total Mix Fluid Gal
6	Displacement	Displacement	283	bbl	8.33				
0.034480 gal/bbl		<b>CLA-WEB - BULK (101985043)</b>							
Cement Left In Pipe		Amount	ft	Reason				Shoe Joint	

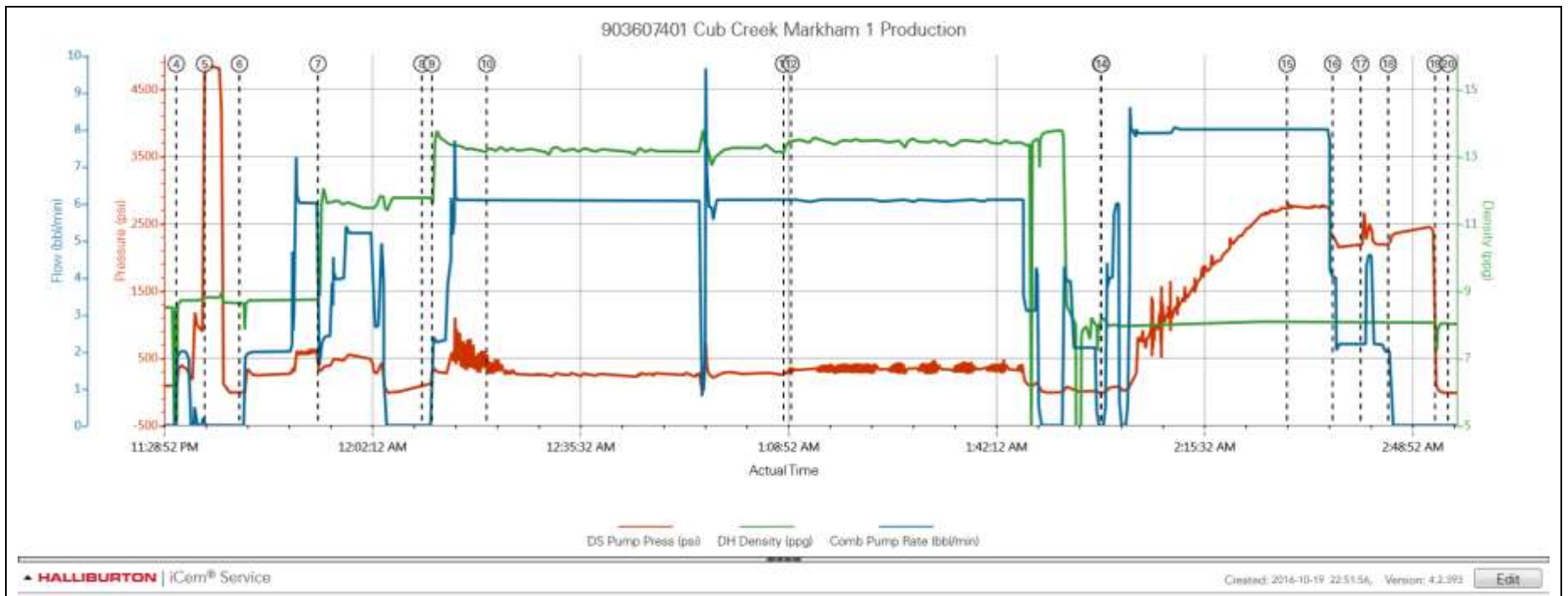
50 bbl spacer and 30 bbl cement to surface

## 3.0 Attachments

### 3.1 Case 1-Custom Results.png



3.2 Case 1-Custom Results (1).png



3.3 Case 1-Custom Results (2).png

