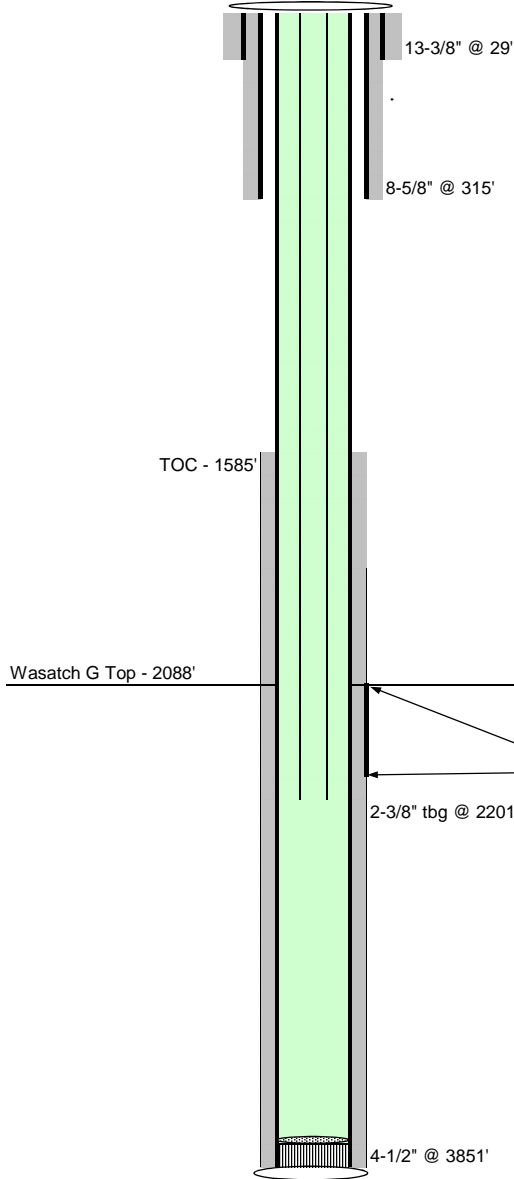




# Exploration and Production

## Well P&A Procedure



Well Name **DOE 1-W-28**  
 Location **SWNE 28-6S-95W**  
 Field **Parachute**  
 County **Garfield, CO**  
 API **05 045 06586**  
 KB **5557'**  
 Footages **1915' FNL, 1755' FEL**

### Spud 8/31/1989

Casing	<b>29'</b>	<b>13-3/8" 24#</b>
Cement	Redimix to surface	
Casing	<b>315'</b>	<b>8-5/8" 24#</b>
Cement	100 sx	50/50 Poz
	50 sx	Class G
Casing	<b>3851'</b>	<b>4-1/2" 10.5#</b>
Cement	610 sx	50/50 Poz

Tubing	<b>2,201</b>	<b>2-3/8"</b>
--------	--------------	---------------

### Formation Tops

Wasatch	2088'
---------	-------

<u>TOC - Bond Log</u>	<b>1585'</b>
-----------------------	--------------

### Completed Intervals

	<u>Depth</u>	<u># Holes</u>
<u>Wasatch G</u>	2088' - 2148'	59