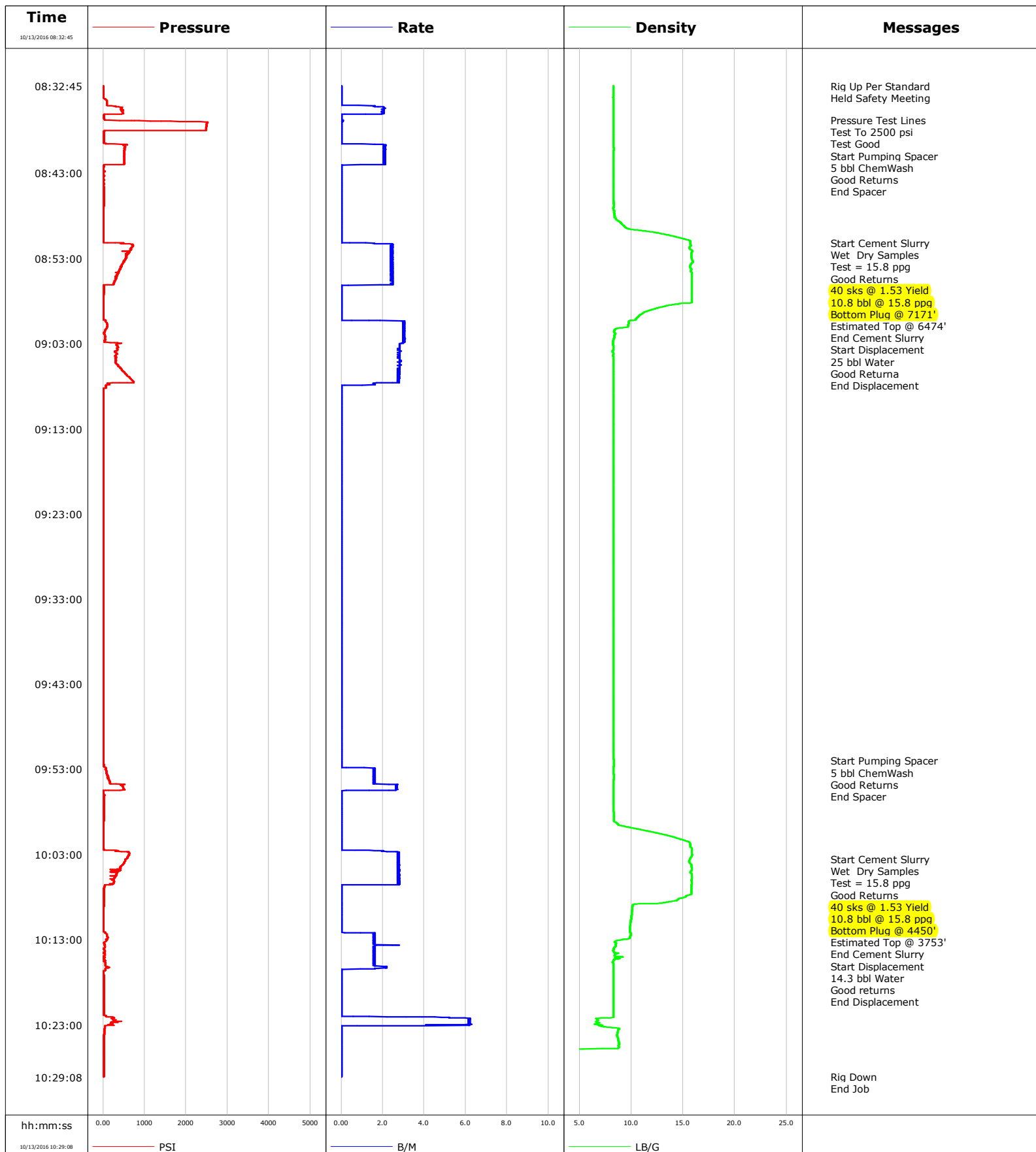


**Well** Miracle 16-12  
**Field** DJ  
**Engineer** Jordan Moreland  
**Country** United States

**Client** Anadarko  
**SIR No.** DNKQ-00048  
**Job Type** Plug  
**Job Date** 10-13-2016



				Customer Anadarko			Job Number DNKQ-00048						
Well <b>Miracle 16-12</b>			Location (legal)			Schlumberger Location			Job Start <b>Oct/13/2016</b>				
Field DJ		Formation Name/Type			Deviation deg		Bit Size in		Well MD ft		Well TVD ft		
County Weld		State/Province Colorado			BHP psi		BHST degF		BHCT degF		Pore Press. Gradient lb/gal		
Well Master 0631184084		API/UWI <b>0506906401</b>											
Rig Name Leed		Drilled For Oil		Service Via Land		Casing/ Liner							
						Depth, ft		Size, in		Weight, lb/ft		Grade	
Offshore Zone		Well Class Old		Well Type Workover									
Drilling Fluid Type		Max. Density lb/gal		Plastic Viscosity cP		Tubing/Drill Pipe							
						T/D		Depth, ft		Size, in		Weight, lb/ft	
Service Line Cementing		Job Type Plug				T		<b>7171.0</b>		2.4		4.7	
						T		<b>4450.0</b>		2.4		4.7	
Max. Allowed Tub. Press psi		Max. Allowed Ann. Press psi		WH Connection 2 3/8" 4.7# T/S		Perforations/Open Hole							
						Top, ft		Bottom, ft		shot/ft		No. of Shots	
						ft		ft					
						ft		ft				Diameter in	
						ft		ft					
						Treat Down Tubing		Displacement bbl		Packer Type		Packer Depth ft	
						Tubing Vol. bbl		Casing Vol. bbl		Annular Vol. bbl		Openhole Vol. bbl	
Casing/Tubing Secured <input checked="" type="checkbox"/>		1 Hole Vol. Circulated prior to Cement <input checked="" type="checkbox"/>				Casing Tools				Squeeze Job			
Lift Pressure psi						Shoe Type				Squeeze Type			
Pipe Rotated <input type="checkbox"/>		Pipe Reciprocated <input type="checkbox"/>				Shoe Depth ft				Tool Type			
No. Centralizers		Top Plugs		Bottom Plugs		Stage Tool Type				Tool Depth ft			
Cement Head Type						Stage Tool Depth ft				Tail Pipe Size in			
Job Scheduled For Oct/13/2016		Arrived on Location Oct/13/2016		Leave Location Oct/13/2016		Collar Type				Tail Pipe Depth ft			
						Collar Depth ft				Sqz. Total Vol. bbl			
Date	Time 24-hr clock	Treating Pressure PSI	Flow Rate B/M	Density LB/G	Volume B/M	Message							
10/13/2016	08:32:45	9	0.0	8.29	0.0	Started Acquisition							
10/13/2016	08:32:46	9	0.0	8.29	0.0	Rig Up Per Standard							
10/13/2016	08:34:45	87	1.1	8.29	0.0								
10/13/2016	08:36:45	32	0.0	8.29	0.0								
10/13/2016	08:36:47	60	0.0	8.29	0.1	Pressure Test Lines							
10/13/2016	08:37:00	2490	0.0	8.29	0.0	Test To 2500 psi							
10/13/2016	08:38:45	18	0.0	8.29	0.0								
10/13/2016	08:39:37	449	0.8	8.29	1.6	Start Pumping Spacer							
10/13/2016	08:40:00	522	2.1	8.30	2.1	5 bbl ChemWash							
10/13/2016	08:40:45	513	2.1	8.29	2.0								
10/13/2016	08:42:00	513	2.1	8.28	2.1	End Spacer							
10/13/2016	08:42:45	18	0.0	8.28	0.0								
10/13/2016	08:44:45	14	0.0	8.29	0.0								
10/13/2016	08:46:45	14	0.0	8.31	0.0								
10/13/2016	08:48:45	5	7.5	8.92	0.0								
10/13/2016	08:50:45	5	7.6	15.16	0.0								
10/13/2016	08:51:13	499	0.5	15.71	1.2	Start Cement Slurry							
10/13/2016	08:52:00	650	2.3	15.77	2.4	Wet Dry Samples							
10/13/2016	08:52:45	558	2.3	15.78	2.5								
10/13/2016	08:53:00	554	2.3	15.81	2.5	40 sks @ 1.53 Yield							
10/13/2016	08:54:00	439	2.3	15.66	2.5	Estimated Top @ 6474'							

Well			Field		Job Start		Customer		Job Number	
Miracle 16-12			DJ		Oct/13/2016		Anadarko		DNKQ-00048	
Date	Time 24-hr clock	Treating Pressure PSI	Flow Rate B/M	Density LB/G	Volume B/M	Message				
10/13/2016	08:56:10	14	1.8	15.83	0.3	End Cement Slurry				
10/13/2016	08:56:45	14	0.0	15.81	0.0					
10/13/2016	08:58:45	9	0.0	12.86	0.0					
10/13/2016	09:00:00	5	0.0	10.53	0.0	Start Displacement				
10/13/2016	09:00:10	5	0.0	10.44	0.0	Good Returna				
10/13/2016	09:00:45	101	3.6	9.73	3.0					
10/13/2016	09:02:45	32	3.6	8.24	3.0					
10/13/2016	09:04:45	316	2.9	8.28	2.8					
10/13/2016	09:07:56	64	1.5	8.28	0.0	End Displacement				
10/13/2016	09:08:45	5	0.0	8.28	0.0					
10/13/2016	09:10:45	5	0.0	8.30	0.0					
10/13/2016	09:12:45	5	0.0	8.28	0.0					
10/13/2016	09:14:45	5	0.0	8.28	0.0					
10/13/2016	09:16:45	5	0.0	8.28	0.0					
10/13/2016	09:18:45	5	0.0	8.28	0.0					
10/13/2016	09:18:45	5	0.0	8.28	0.0					
10/13/2016	09:20:45	5	0.0	8.28	0.0					
10/13/2016	09:22:45	5	0.0	8.28	0.0					
10/13/2016	09:24:45	5	0.0	8.29	0.0					
10/13/2016	09:26:45	5	0.0	8.29	0.0					
10/13/2016	09:28:45	5	0.0	8.29	0.0					
10/13/2016	09:30:45	5	0.0	8.29	0.0					
10/13/2016	09:32:45	5	0.0	8.29	0.0					
10/13/2016	09:34:45	5	0.0	8.29	0.0					
10/13/2016	09:36:45	5	0.0	8.29	0.0					
10/13/2016	09:38:45	5	0.0	8.29	0.0					
10/13/2016	09:40:45	5	0.0	8.29	0.0					
10/13/2016	09:42:45	5	0.0	8.29	0.0					
10/13/2016	09:44:45	5	0.0	8.29	0.0					
10/13/2016	09:46:45	5	0.0	8.29	0.0					
10/13/2016	09:48:45	5	0.0	8.29	0.0					
10/13/2016	09:52:00	9	0.0	8.31	0.0	Start Pumping Spacer				
10/13/2016	09:52:45	41	1.2	8.28	0.0					
10/13/2016	09:53:00	60	4.3	8.29	1.6	5 bbl ChemWash				
10/13/2016	09:54:45	311	1.7	8.29	1.7					
10/13/2016	09:55:29	69	2.4	8.29	1.4	End Spacer				
10/13/2016	09:56:45	14	0.0	8.29	0.0					
10/13/2016	09:58:45	14	0.0	8.31	0.0					
10/13/2016	10:00:45	9	7.5	13.44	0.0					
10/13/2016	10:02:45	613	2.6	15.84	2.8					
10/13/2016	10:04:00	504	2.7	15.64	2.7	Wet Dry Samples				
10/13/2016	10:04:45	389	2.6	15.83	2.7					
10/13/2016	10:06:37	41	1.2	15.80	0.0	End Cement Slurry				
10/13/2016	10:06:45	32	0.0	15.79	0.0					
10/13/2016	10:08:45	9	2.4	12.49	0.0					
10/13/2016	10:10:45	9	0.0	9.96	0.0					
10/13/2016	10:12:12	50	2.3	9.94	0.9	Start Displacement				
10/13/2016	10:12:45	110	4.4	9.87	1.5					
10/13/2016	10:13:00	78	3.3	9.13	1.6	14.3 bbl Water				
10/13/2016	10:14:45	46	4.1	8.41	1.5					
10/13/2016	10:16:30	60	1.8	8.28	0.0	End Displacement				
10/13/2016	10:16:45	0	0.2	8.29	0.0					
10/13/2016	10:18:45	18	0.0	8.29	0.0					
10/13/2016	10:20:45	18	0.0	8.29	0.0					

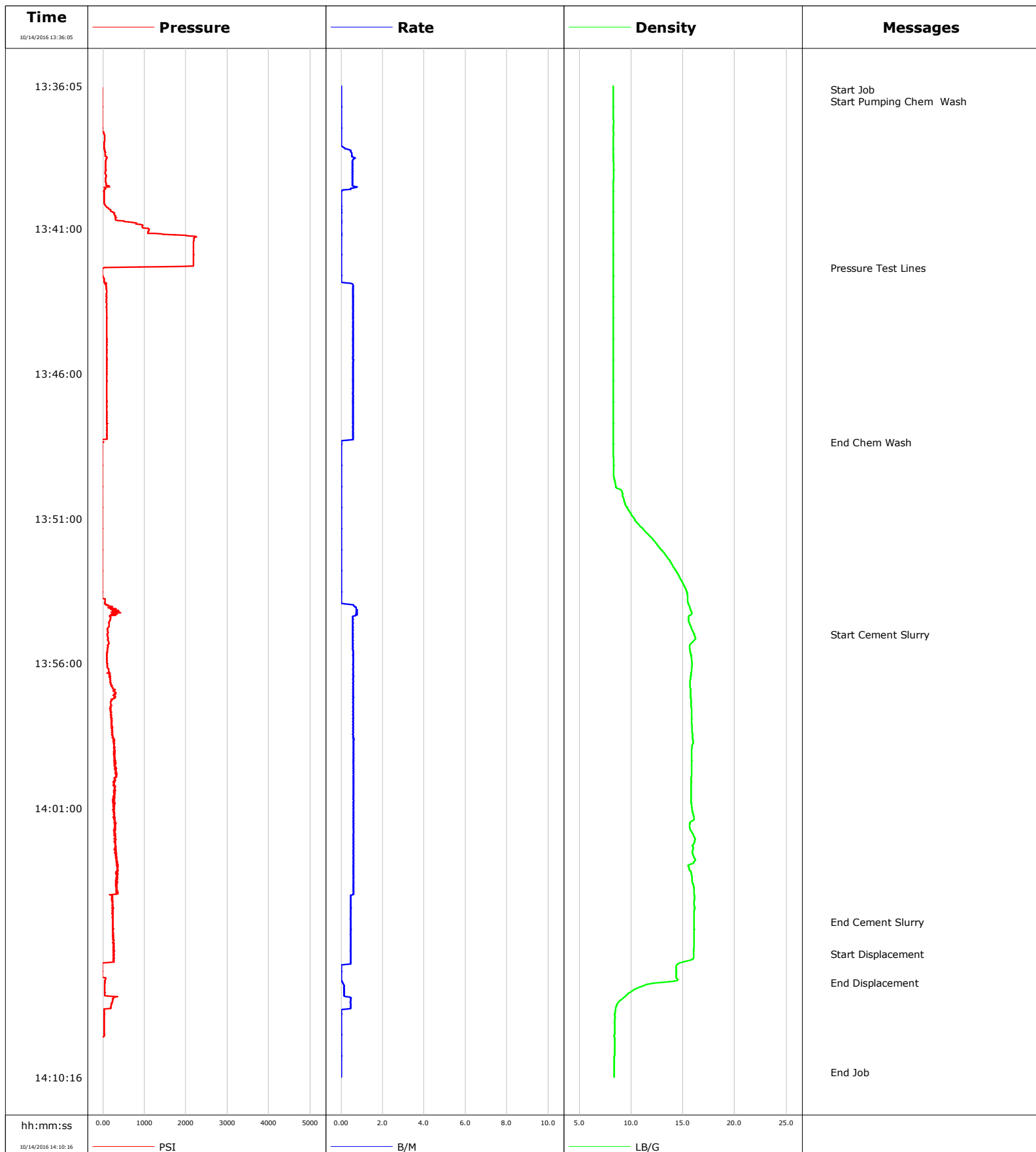
Well			Field		Job Start	Customer		Job Number
Miracle 16-12			DJ		Oct/13/2016	Anadarko		DNKQ-00048
Date	Time 24-hr clock	Treating Pressure PSI	Flow Rate B/M	Density LB/G	Volume B/M	Message		
10/13/2016	10:24:45	23	0.0	8.73	0.0			
10/13/2016	10:26:45	23	0.0	-0.00	0.0			
10/13/2016	10:28:45	23	0.0	-0.00	0.0			

### Post Job Summary

Average Pump Rates, bbl/min					Volume of Fluid Injected, bbl							
Slurry 2.5	N2	Mud	Maximum Rate 6.3	Total Slurry 70.0	Mud 0.0	Spacer 0.0	N2					
Treating Pressure Summary, psi					Breakdown Fluid							
Maximum 2522	Final 23	Average 109	Bump Plug to	Breakdown	Type	Volume bbl	Density lb/gal					
Avg. N2 Percent %	Designed Slurry Volume 0.0 bbl	Displacement 0.0 bbl	Mix Water Temp 60 degF	Cement Circulated to Surface? <input type="checkbox"/>		Volume bbl						
				Washed Thru Perfs <input type="checkbox"/>		To ft						
Customer or Authorized Representative Jay Chandler			Schlumberger Supervisor Jordan Moreland			Circulation Lost <input type="checkbox"/>	Job Completed <input checked="" type="checkbox"/>					
						-	-					

**Well** Miracle 16-12  
**Field** Old 10  
**Engineer** Scot Thornton  
**Country** United States

**Client** Anadarko  
**SIR No.** 2357009  
**Job Type** stub plug  
**Job Date** 10-14-2016



# Cementing Service Report

				Customer Anadarko		Job Number 2357009	
Well Miracle 16-12		Location (legal)		Schlumberger Location		Job Start Oct/14/2016	
Field Old 10		Formation Name/Type		Deviation deg	Bit Size in	Well MD ft	Well TVD ft
County Weld		State/Province Colorado		BHP psi	BHST degF	BHCT degF	Pore Press. Gradient lb/gal
Well Master 063118084		API/UWI					
Rig Name	Drilled For N/A	Service Via Land	Casing/ Liner				
			Depth, ft	Size, in	Weight, lb/ft	Grade	Thread
Offshore Zone	Well Class Old	Well Type Other					
Drilling Fluid Type		Max. Density lb/gal	Plastic Viscosity cP	Tubing/Drill Pipe			
				T/D	Depth, ft	Size, in	Weight, lb/ft
Service Line Cementing		Job Type stub plug			885.0	2.4	4.7
					0.0	0.0	0.0
Max. Allowed Tub. Press psi		Max. Allowed Ann. Press psi	WH Connection 2 3/8" 4.7# T/S	Perforations/Open Hole			
				Top, ft	Bottom, ft	shot/ft	No. of Shots
				ft	ft		Total Interval ft
				ft	ft		Diameter in
				ft	ft		
				Treat Down Tubing	Displacement bbl	Packer Type	Packer Depth ft
				Tubing Vol. bbl	Casing Vol. bbl	Annular Vol. bbl	Openhole Vol. bbl
Casing/Tubing Secured <input type="checkbox"/>		1 Hole Vol. Circulated prior to Cement <input type="checkbox"/>		Casing Tools		Squeeze Job	
Lift Pressure psi				Shoe Type		Squeeze Type	
Pipe Rotated <input type="checkbox"/>		Pipe Reciprocated <input type="checkbox"/>		Shoe Depth ft		Tool Type	
No. Centralizers		Top Plugs	Bottom Plugs	Stage Tool Type		Tool Depth ft	
Cement Head Type				Stage Tool Depth ft		Tail Pipe Size in	
Job Scheduled For Oct/14/2016 12:00		Arrived on Location Oct/14/2016 12:00	Leave Location Oct/14/2016	Collar Type		Tail Pipe Depth ft	
				Collar Depth ft		Sqz. Total Vol. bbl	
Date	Time 24-hr clock	Treating Pressure PSI	Flow Rate B/M	Density LB/G	Volume BBL	Message	
10/14/2016	13:36:05	-28	0.0	8.30	0.0	Started Acquisition	
10/14/2016	13:36:12	-24	0.0	8.30	0.0	Start Job	
10/14/2016	13:36:13	-24	0.0	8.30	0.0	Start Pumping Chem Wash	
10/14/2016	13:39:55	27	0.0	8.30	0.8		
10/14/2016	13:42:21	59	0.0	8.30	0.8	Pressure Test Lines	
10/14/2016	13:43:45	86	0.6	8.30	1.3		
10/14/2016	13:47:35	95	0.6	8.30	3.5		
10/14/2016	13:48:22	22	0.0	8.30	3.9	End Chem Wash	
10/14/2016	13:51:25	-19	0.0	11.24	3.9		
10/14/2016	13:55:00	109	0.6	16.08	4.6	Start Cement Slurry	
10/14/2016	13:55:15	132	0.6	15.96	4.7		
10/14/2016	13:59:05	297	0.6	15.86	6.9		
10/14/2016	14:02:55	347	0.6	15.79	9.3		
10/14/2016	14:04:55	251	0.5	16.10	10.3	End Cement Slurry	
10/14/2016	14:06:01	269	0.5	16.04	10.8	Start Displacement	
10/14/2016	14:06:45	-24	0.0	14.36	11.0		
10/14/2016	14:07:01	49	0.1	12.60	11.0	End Displacement	

<b>Well</b> Miracle 16-12	<b>Field</b> Old 10	<b>Job Start</b> Oct/14/2016	<b>Customer</b> Anadarko	<b>Job Number</b> 2357009
------------------------------	------------------------	---------------------------------	-----------------------------	------------------------------

Post Job Summary

Average Pump Rates, bbl/min					Volume of Fluid Injected, bbl			
Slurry 0.5	N2	Mud	Maximum Rate 0.8		Total Slurry 23.7	Mud 0.0	Spacer 15.0	N2
Treating Pressure Summary, psi					Breakdown Fluid			
Maximum 2256	Final -33	Average 272	Bump Plug to	Breakdown	Type	Volume bbl		Density lb/gal
Avg. N2 Percent %	Designed Slurry Volume 23.7 bbl	Displacement 0.0 bbl	Mix Water Temp degF	Cement Circulated to Surface? <input type="checkbox"/>		Volume bbl		
				Washed Thru Perfs <input type="checkbox"/>		To ft		
Customer or Authorized Representative Jane Moreland			Schlumberger Supervisor Scot Thornton			Circulation Lost <input type="checkbox"/>		Job Completed <input checked="" type="checkbox"/>
						-		-