



# Kerr-McGee Oil & Gas Onshore LP

A subsidiary of Anadarko Petroleum Corporation

1099 18<sup>th</sup> Street  
Denver, CO 80202  
720-929-6000

December 2, 2016

Matt Lepore  
Director, Colorado Oil and Gas Conservation Commission  
Department of Natural Resources  
The Chancery Building  
1120 Lincoln Street, Suite 801  
Denver, CO 80203

Re: **30 Day Certification Letter - 318A.e**  
CAMENISCH STATE 23N2-34HZ (Doc No. 401140388)  
Township 2 North, Range 68 West  
Section 15: SWNE  
Unit Acreage: 960 acres  
Unit Spacing: 3N-68W-Sec 34: E/2SW/4, W/2SE/4  
2N-68W-Sec 3: W/2E/2, E/2W/2  
2N-68W-Sec 10: W/2E/2, E/2W/2  
2N-68W-Sec 15: E/2NW/4, W/2NE/4  
Weld County, Colorado

Dear Director Lepore:

Kerr-McGee Oil and Gas Onshore LP ("KMG") hereby certifies that a thirty (30) day notice has been given by certified mail to all mineral owners in the proposed wellbore spacing unit. We have not received any objections to such well location, proposed spacing unit, or additional producing formation. KMG hereby respectfully requests approval of this boundary well.

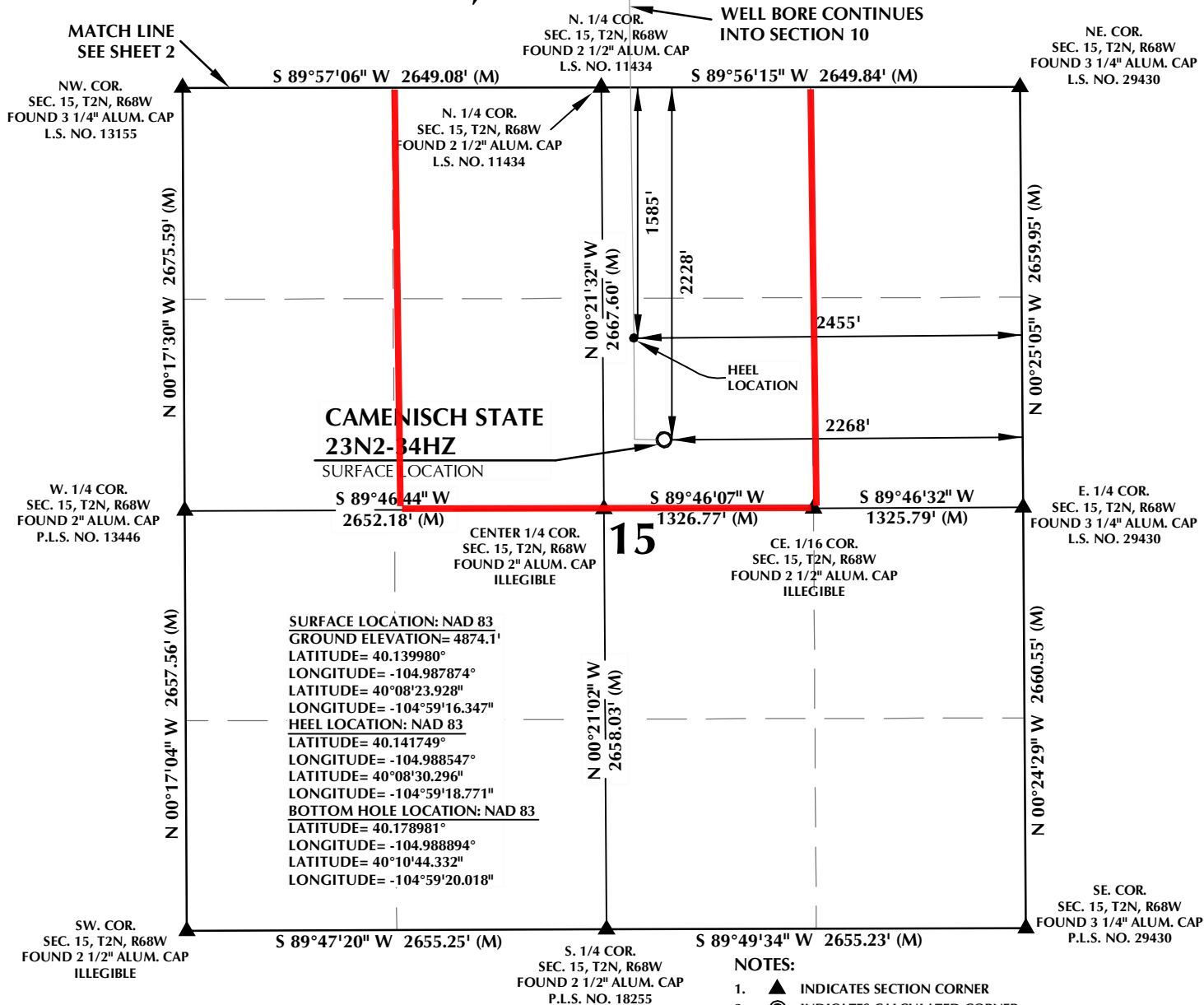
If you have any questions or issues regarding this permit, please contact Cheryl Light at (720) 929-6461.

Very truly yours,

**KERR-McGEE OIL AND GAS ONSHORE LP**

A handwritten signature in blue ink that reads 'Cheryl Light'.

Cheryl Light  
Senior Regulatory Analyst

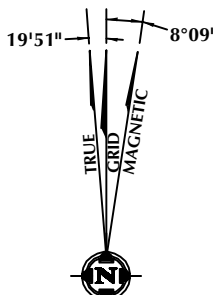
**T2N, R68W****CERTIFICATE OF SURVEYOR:**

THIS IS TO CERTIFY THAT THE ABOVE PLAT WAS PREPARED FROM FIELD NOTES OF ACTUAL SURVEY MADE BY ME OR UNDER MY SUPERVISION AND THAT THE SAME ARE TRUE AND CORRECT TO THE BEST OF MY KNOWLEDGE AND BELIEF. THIS CERTIFICATE DOES NOT REPRESENT A LAND SURVEY PLAT OR IMPROVEMENT SURVEY PLAT AS DEFINED BY C.R.S. 38-51-102 AND CANNOT BE RELIED UPON TO DETERMINE OWNERSHIP.

*Randall K. French*  
**RANDALL K. FRENCH**  
 PROFESSIONAL LAND SURVEYOR  
 COLORADO REGISTRATION NUMBER 18512

**NOTICE:**  
 ACCORDING TO COLORADO STATE LAW YOU MUST COMMENCE ANY LEGAL ACTION BASED UPON ANY DEFECT IN THIS SURVEY WITHIN THREE YEARS AFTER YOU FIRST DISCOVER SUCH DEFECT. IN NO EVENT MAY ANY ACTION BASED UPON ANY DEFECT IN THIS SURVEY BE COMMENCED MORE THAN TEN YEARS FROM THE DATE ON THE CERTIFICATION SHOWN HEREON.

**NOTE:**  
 MAGNETIC NORTH IS CURRENT AS OF 9/10/2015.  
 MAGNETIC NORTH CHANGES WEST 0°06' PER YEAR.

**WELL PAD - CAMENISCH 36N-22HZ**

**CAMENISCH STATE 23N2-34HZ**  
**WELL LOCATION CERTIFICATE**  
 2228' FNL & 2268' FEL SWNE (SURFACE)  
 1585' FNL & 2455' FEL SWNE (HEEL)  
 LOCATED IN SECTION 15  
 T2N, R68W, 6TH P.M.  
 1472' FSL & 2618' FEL NWSE (BOTTOM)  
 LOCATED IN SECTION 34  
 T3N, R68W, 6TH P.M.  
 WELD COUNTY, COLORADO

**Kerr-McGee Oil &  
 Gas Onshore L.P.**  
 1099 18th Street  
 Denver, Colorado 80202

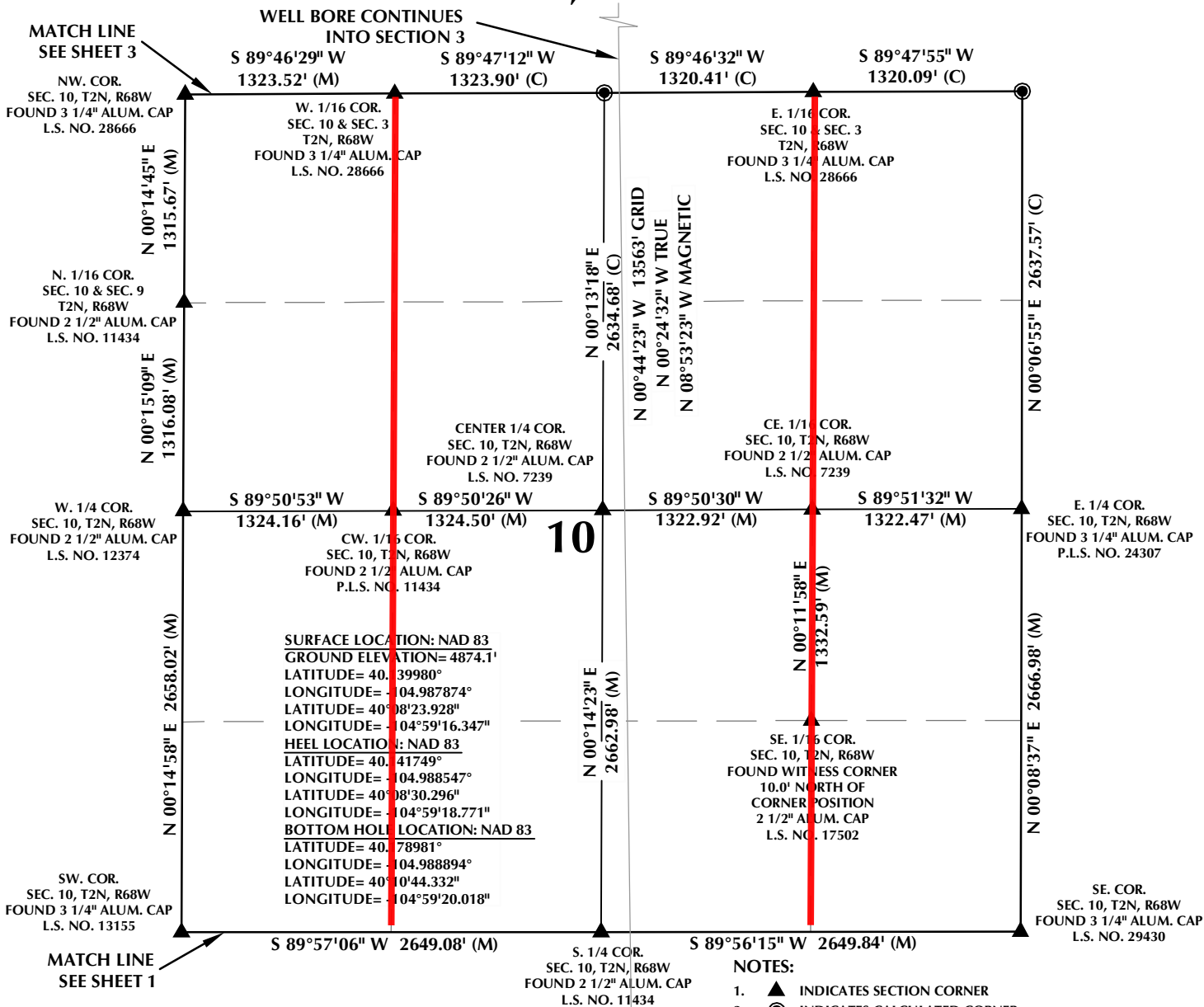
**CONSULTING, LLC**

**SHERIDAN OFFICE**  
 1095 Saberton Avenue  
 Sheridan, Wyoming 82801  
 Phone 307-674-0609

**LOVELAND OFFICE**  
 1635 Foxtrail Drive, Suite 204  
 Loveland, Colorado 80538  
 Phone 970-776-4331

DRAFTED BY:	LMO	CHECKED BY:	RKF	SHEET NO:
DATE DRAFTED:	9/28/15	DATE SURVEYED:	7/15/15	<b>1</b>
REVISED:	10/17/16	FILE NAME:	15-23	1 OF 4

T2N, R68W

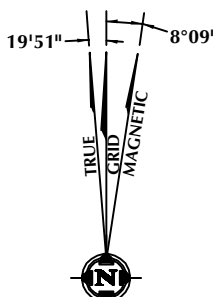


**CERTIFICATE OF SURVEYOR:**

THIS IS TO CERTIFY THAT THE ABOVE PLAT WAS PREPARED FROM FIELD NOTES OF ACTUAL SURVEY MADE BY ME OR UNDER MY SUPERVISION AND THAT THE SAME ARE TRUE AND CORRECT TO THE BEST OF MY KNOWLEDGE AND BELIEF. THIS CERTIFICATE DOES NOT REPRESENT A LAND SURVEY OR IMPROVEMENT SURVEY PLAT AS DEFINED BY C.R.S. 38-51-102 AND CANNOT BE RELIED UPON TO DETERMINE OWNERSHIP.

*Randall K. French*  
 RANDALL K. FRENCH  
 PROFESSIONAL LAND SURVEYOR  
 COLORADO REGISTRATION NUMBER 18512

**NOTICE:**  
 ACCORDING TO COLORADO STATE LAW YOU MUST COMMENCE ANY LEGAL ACTION BASED UPON ANY DEFECT IN THIS SURVEY WITHIN THREE YEARS AFTER YOU FIRST DISCOVER SUCH DEFECT. IN NO EVENT MAY ANY ACTION BASED UPON ANY DEFECT IN THIS SURVEY BE COMMENCED MORE THAN TEN YEARS FROM THE DATE ON THE CERTIFICATION SHOWN HEREON.



**NOTE:**  
 MAGNETIC NORTH IS CURRENT AS OF 9/10/2015.  
 MAGNETIC NORTH CHANGES WEST 0°06' PER YEAR.

**WELL PAD - CAMENISCH 36N-22HZ**

CAMENISCH STATE 23N2-34HZ  
 WELL LOCATION CERTIFICATE  
 2228' FNL & 2268' FEL SWNE (SURFACE)  
 1585' FNL & 2455' FEL SWNE (HEEL)  
 LOCATED IN SECTION 15  
 T2N, R68W, 6TH P.M.  
 1472' FSL & 2618' FEL NWSE (BOTTOM)  
 LOCATED IN SECTION 34  
 T3N, R68W, 6TH P.M.  
 WELD COUNTY, COLORADO

**Kerr-McGee Oil &  
 Gas Onshore L.P.**  
 1099 18th Street  
 Denver, Colorado 80202



**CONSULTING, LLC**

**SHERIDAN OFFICE**  
 1095 Saberton Avenue  
 Sheridan, Wyoming 82801  
 Phone 307-674-0609

**LOVELAND OFFICE**  
 1635 Foxtrail Drive, Suite 204  
 Loveland, Colorado 80538  
 Phone 970-776-4331

DRAFTED BY:	LMO	CHECKED BY:	RKF	SHEET NO:
DATE DRAFTED:	9/28/15	DATE SURVEYED:	7/15/15	2
REVISED:	10/17/16	FILE NAME:	15-23	2 OF 4

**T2N, R68W**

WELL BORE CONTINUES INTO  
SECTION 34, T3N, R68W

NE. COR.  
SEC. 3, T2N, R68W  
FOUND TWO 1" BRASS  
PLUG REFERENCE  
MONUMENTS  
PER CORNER RECORD  
L.S. NO. 29420

E. 1/4 COR.  
SEC. 3, T2N, R68W  
FOUND THREE 1"  
BRASS PLUG REFERENCE  
MONUMENTS  
PER CORNER RECORD  
L.S. NO. 29420

E. 1/16 COR.  
SEC. 10 & SEC. 3  
T2N, R68W  
FOUND 3 1/4" ALUM. CAP  
L.S. NO. 28666

CENTER 1/4 COR.  
SEC. 3, T2N, R68W  
SET 2 1/2" ALUM. CAP  
P.L.S. NO. 38512

N 00°44'23" W 13563' GRID  
N 00°24'32" W TRUE  
N 08°53'23" W MAGNETIC

SURFACE LOCATION: NAD 83  
GROUND ELEVATION= 4874.1'  
LATITUDE= 40°13'99.80"  
LONGITUDE= -104°98'78.74"  
LATITUDE= 40°08'23.928"  
LONGITUDE= -104°59'16.347"  
HEEL LOCATION: NAD 83  
LATITUDE= 40°14'17.49"  
LONGITUDE= -104°98'54.70"  
LATITUDE= 40°08'30.296"  
LONGITUDE= -104°59'18.771"  
BOTTOM HOLE LOCATION: NAD 83  
LATITUDE= 40°17'89.81"  
LONGITUDE= -104°98'88.94"  
LATITUDE= 40°10'44.332"  
LONGITUDE= -104°59'20.018"

NW. COR.  
SEC. 3, T2N, R68W  
FOUND 2 1/2" ALUM. CAP  
P.L.S. NO. 36073

W. 1/4 COR.  
SEC. 3, T2N, R68W  
FOUND 2 1/2" ALUM. CAP  
L.S. NO. 28273

SW. COR.  
SEC. 3, T2N, R68W  
FOUND 3 1/4" ALUM. CAP  
L.S. NO. 28666

N 89°54'22" W 2649.46' (M)

S 89°13'40" W 2626.52' (M)

N 00°05'00" E 2596.97' (M)

N 00°16'58" E 2561.53' (M)

N 00°07'10" E 2565.84' (M)

N 00°26'01" E 2625.77' (M)

N 00°16'58" E 2646.73' (M)

N 00°07'56" E 2667.94' (C)

S 89°46'29" W 1323.52' (M) S 89°47'12" W 1323.90' (C)

S 89°46'32" W 1320.41' (C) S 89°47'55" W 1320.09' (C)

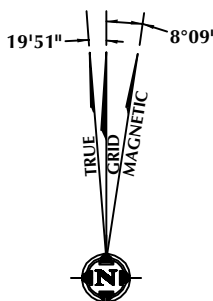
W. 1/16 COR. SEC. 10 & SEC. 3  
T2N, R68W  
FOUND 3 1/4" ALUM. CAP  
L.S. NO. 28666

**NOTES:**

1. ▲ INDICATES SECTION CORNER
2. ● INDICATES CALCULATED CORNER
3. ELEVATION BASED ON NAVD88 (GEOID09)
4. BASIS OF BEARING DERIVED FROM COLORADO COORDINATE SYSTEM OF 1983 NORTH ZONE.
5. ALL MEASURED DISTANCES ARE GRID.
6. COMBINED SCALE FACTOR: .99972911 CALCULATED FROM THE S. 1/4 CORNER OF SECTION 10, T2N, R68W
7. OPERATOR: ROB WILSON / PDOP = 1.7
8. SEE ADDENDUM TO WELL LOCATION CERTIFICATE FOR EXISTING IMPROVEMENTS WITHIN 500' OF THE WELL PAD.
9. WELL FOOTAGES ARE MEASURED AT RIGHT ANGLES TO THE SECTION LINES.
10. THE BOTTOM OF HOLE BEARS N00°44'23"W, 13563' FROM THE HEEL LOCATION.
11. NO. 1 & NO. 2 AS SHOWN HEREON ARE GOVERNMENT LOTS 1 & 2 PER THE ORIGINAL GLO SURVEY



SCALE: 1" = 1000'



NOTE:  
MAGNETIC NORTH IS CURRENT AS OF 9/10/2015.  
MAGNETIC NORTH CHANGES WEST 0°06' PER YEAR.

**CERTIFICATE OF SURVEYOR:**

THIS IS TO CERTIFY THAT THE ABOVE PLAT WAS PREPARED FROM FIELD NOTES OF ACTUAL SURVEY MADE BY ME OR UNDER MY SUPERVISION AND THAT THE SAME ARE TRUE AND CORRECT TO THE BEST OF MY KNOWLEDGE AND BELIEF. THIS CERTIFICATE DOES NOT REPRESENT A LAND SURVEY PLAT OR IMPROVEMENT SURVEY PLAT AS DEFINED BY C.R.S. 38-51-102 AND CANNOT BE RELIED UPON TO DETERMINE OWNERSHIP.

*Randall K. French*  
RANDALL K. FRENCH  
PROFESSIONAL LAND SURVEYOR  
COLORADO REGISTRATION NUMBER 18512  
10/17/16

NOTICE:  
ACCORDING TO COLORADO STATE LAW YOU MUST COMMENCE ANY LEGAL ACTION BASED UPON ANY DEFECT IN THIS SURVEY WITHIN THREE YEARS AFTER YOU FIRST DISCOVER SUCH DEFECT. IN NO EVENT MAY ANY ACTION BASED UPON ANY DEFECT IN THIS SURVEY BE COMMENCED MORE THAN TEN YEARS FROM THE DATE ON THE CERTIFICATION SHOWN HEREON.

**WELL PAD - CAMENISCH 36N-22HZ**

CAMENISCH STATE 23N2-34HZ  
WELL LOCATION CERTIFICATE  
2228' FNL & 2268' FEL SWNE (SURFACE)  
1585' FNL & 2455' FEL SWNE (HEEL)  
LOCATED IN SECTION 15  
T2N, R68W, 6TH P.M.  
1472' FSL & 2618' FEL NWSE (BOTTOM)  
LOCATED IN SECTION 34  
T3N, R68W, 6TH P.M.  
WELD COUNTY, COLORADO

**Kerr-McGee Oil &  
Gas Onshore L.P.**  
1099 18th Street  
Denver, Colorado 80202



**CONSULTING, LLC**

SHERIDAN OFFICE  
1095 Saberton Avenue  
Sheridan, Wyoming 82801  
Phone 307-674-0609

LOVELAND OFFICE  
1635 Foxtrail Drive, Suite 204  
Loveland, Colorado 80538  
Phone 970-776-4331

DRAFTED BY:	LMO	CHECKED BY:	RKF	SHEET NO:
DATE DRAFTED:	9/28/15	DATE SURVEYED:	7/15/15	3
REVISED:	10/17/16	FILE NAME:	15-23	3 OF 4

# PROPOSED SPACING UNIT

## T3N, R68W

NW. COR.  
SEC. 34, T3N, R68W  
FOUND 2 1/2" ALUM. CAP  
P.L.S. NO. 34591

S 89°07'13" W 2565.53' (M)

S 89°07'15" W 2656.24' (M)

NE. COR.  
SEC. 34, T3N, R68W  
FOUND 3 1/4" ALUM. CAP  
P.L.S. NO. 29420

N. 1/4 COR.  
SEC. 34, T3N, R68W  
FOUND 2 1/2" ALUM. CAP  
L.S. NO. 38459

SURFACE LOCATION: NAD 83  
GROUND ELEVATION= 4874.1'  
LATITUDE= 40.139980°  
LONGITUDE= -104.987874°  
LATITUDE= 40°08'23.928"  
LONGITUDE= -104°59'16.347"  
HEEL LOCATION: NAD 83  
LATITUDE= 40.141749°  
LONGITUDE= -104.988547°  
LATITUDE= 40°08'30.296"  
LONGITUDE= -104°59'18.771"  
BOTTOM HOLE LOCATION: NAD 83  
LATITUDE= 40.178981°  
LONGITUDE= -104.988894°  
LATITUDE= 40°10'44.332"  
LONGITUDE= -104°59'20.018"

CENTER 1/4 COR.  
SEC. 34, T3N, R68W  
FOUND 2 1/2" ALUM. CAP  
P.L.S. NO. 7735

34

W. 1/4 COR.  
SEC. 34, T3N, R68W  
FOUND 3 1/4" ALUM. CAP  
P.L.S. NO. 34591

S 89°07'26" W  
2573.2' (M)

S 89°34'05" W  
2673.1' (M)

E. 1/4 COR.  
SEC. 34, T3N, R68W  
FOUND 3 1/4" ALUM. CAP  
P.L.S. NO. 29420

N 00°18'58" W 2650.43' (M)

1223'

BOTTOM OF HOLE:  
472' FSL & 2618' FEL

34'

1292'

2618'

N 01°56'09" W  
2695.62' (M)

124'

1472'

N 00°56'51" W 2679.21' (M)

SE. COR.  
SEC. 34, T3N, R68W  
FOUND TWO 1" BRASS  
PLUG REFERENCE  
MONUMENTS  
PER CORNER RECORD  
L.S. NO. 29420

SW. COR.  
SEC. 34, T3N, R68W  
FOUND 2 1/2" ALUM. CAP  
P.L.S. NO. 36073

N 89°54'22" W 2649.46' (M)

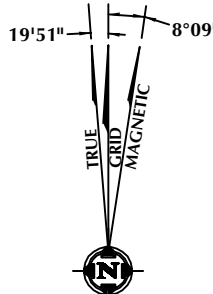
S. 1/4 COR.  
SEC. 34, T3N, R68W  
FOUND 3 1/4" ALUM. CAP  
P.L.S. NO. 18482

S 89°13'40" W 2626.52' (M)

MATCH LINE  
SEE SHEET 3

### NOTES:

- ▲ INDICATES SECTION CORNER
- INDICATES CALCULATED CORNER
- ELEVATION BASED ON NAVD88 (GEOID09)
- BASIS OF BEARING DERIVED FROM COLORADO COORDINATE SYSTEM OF 1983 NORTH ZONE.
- ALL MEASURED DISTANCES ARE GRID.
- COMBINED SCALE FACTOR: .99972911 CALCULATED FROM THE S. 1/4 CORNER OF SECTION 10, T2N, R68W
- OPERATOR: ROB WILSON / PDOP = 1.7
- SEE ADDENDUM TO WELL LOCATION CERTIFICATE FOR EXISTING IMPROVEMENTS WITHIN 500' OF THE WELL PAD.
- WELL FOOTAGES ARE MEASURED AT RIGHT ANGLES TO THE SECTION LINES.
- THE BOTTOM OF HOLE BEARS N00°44'23"W, 13563' FROM THE HEEL LOCATION.



NOTE:  
MAGNETIC NORTH IS CURRENT AS OF 9/10/2015.  
MAGNETIC NORTH CHANGES WEST 0°06' PER YEAR.



### CERTIFICATE OF SURVEYOR:

THIS IS TO CERTIFY THAT THE ABOVE PLAT WAS PREPARED FROM FIELD NOTES OF ACTUAL SURVEY MADE BY ME OR UNDER MY SUPERVISION AND THAT THE SAME ARE TRUE AND CORRECT TO THE BEST OF MY KNOWLEDGE AND BELIEF. THIS CERTIFICATE DOES NOT REPRESENT A LAND SURVEY PLAT OR IMPROVEMENT SURVEY PLAT AS DEFINED BY C.R.S. 38-51-102 AND CANNOT BE RELIED UPON TO DETERMINE OWNERSHIP.

*Randall K. French*  
38512 H-38

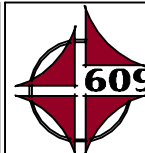
RANDALL K. FRENCH  
PROFESSIONAL LAND SURVEYOR  
COLORADO REGISTRATION NUMBER 18512

NOTICE:  
ACCORDING TO COLORADO STATE LAW YOU MUST COMMENCE ANY LEGAL ACTION BASED UPON ANY DEFECT IN THIS SURVEY WITHIN THREE YEARS AFTER YOU FIRST DISCOVER SUCH DEFECT. IN NO EVENT MAY ANY ACTION BASED UPON ANY DEFECT IN THIS SURVEY BE COMMENCED MORE THAN TEN YEARS FROM THE DATE ON THE CERTIFICATION SHOWN HEREON.

### WELL PAD - CAMENISCH 36N-22HZ

CAMENISCH STATE 23N2-34HZ  
WELL LOCATION CERTIFICATE  
2228' FNL & 2268' FEL SWNE (SURFACE)  
1585' FNL & 2455' FEL SWNE (HEEL)  
LOCATED IN SECTION 15  
T2N, R68W, 6TH P.M.  
1472' FSL & 2618' FEL NWSE (BOTTOM)  
LOCATED IN SECTION 34  
T3N, R68W, 6TH P.M.  
WELD COUNTY, COLORADO

**Kerr-McGee Oil &  
Gas Onshore L.P.**  
1099 18th Street  
Denver, Colorado 80202



### CONSULTING, LLC

SHERIDAN OFFICE  
1095 Saberton Avenue  
Sheridan, Wyoming 82801  
Phone 307-674-0609

LOVELAND OFFICE  
1635 Foxtrail Drive, Suite 204  
Loveland, Colorado 80538  
Phone 970-776-4331

DRAFTED BY: LMO	CHECKED BY: RKF	SHEET NO: 4
DATE DRAFTED: 10/17/16	DATE SURVEYED: 7/15/15	4 OF 4
REVISED:	FILE NAME: 15-23	