

N. 1/4 COR.
SEC. 15, T2N, R68W
FOUND 2 1/2" ALUM. CAP
L.S. NO. 11434

**WELL BORE CONTINUES
INTO SECTION 10**

NE. COR.
SEC. 15, T2N, R68W
FOUND 3 1/4" ALUM. CAP
L.S. NO. 29430

**MATCH LINE
SEE SHEET 2**

NW. COR.
SEC. 15, T2N, R68W
FOUND 3 1/4" ALUM. CAP
L.S. NO. 13155

S 89°57'06" W 2649.08' (M)

S 89°56'15" W 2649.84' (M)

N 00°17'30" W 2675.59' (M)

N 00°17'04" W 2657.56' (M)

SW. COR.

SEC. 15, T2N, R68W
FOUND 2 1/2" ALUM. CAP
ILLEGIBLE

S 89°46'44" W
2652.18' (M)

CENTER 1/4 COR.
SEC. 15, T2N, R68W
FOUND 2nd ALUM. CAP
ILLEGIBLE

15

S 89°46'07" W
1326.77' (M)

CE. 1/16 COR.
SEC. 15, T2N, R68W
FOUND 2 1/2" ALUM. CAP
ILLEGIBLE

S 89°46'32" W
1325.79' (M)

E. 1/4 COR.
SEC. 15, T2N, R68W
FOUND 3 1/4" ALUM. CAP
L.S. NO. 29430


SURFACE LOCATION: NAD 83
GROUND ELEVATION= 4874.3'
LATITUDE= 40.139979°
LONGITUDE= -104.987713°
LATITUDE= 40°08'23.926"
LONGITUDE= -104°59'15.767"
HEEL LOCATION: NAD 83
LATITUDE= 40.141741°
LONGITUDE= -104.987929°
LATITUDE= 40°08'30.268"
LONGITUDE= -104°59'16.543"
BOTTOM HOLE LOCATION: NAD 83
LATITUDE= 40.178984°
LONGITUDE= -104.987591°
LATITUDE= 40°10'44.342"
LONGITUDE= -104°59'15.328"

N 00°21'02" W
2658.03' (M)

S. 1/4 COR.
SEC. 15, T2N, R68W
FOUND 2 1/2" ALUM. CAP
P.L.S. NO. 18255

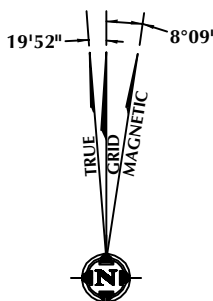
CERTIFICATE OF SURVEYOR:

THIS IS TO CERTIFY THAT THE ABOVE PLAT WAS PREPARED FROM FIELD NOTES OF ACTUAL SURVEY MADE BY ME OR UNDER MY SUPERVISION AND THAT THE SAME ARE TRUE AND CORRECT TO THE BEST OF MY KNOWLEDGE AND BELIEF. THIS CERTIFICATE DOES NOT REPRESENT A LAND SURVEY PLAT OR IMPROVEMENT SURVEY PLAT AS DEFINED BY C.R.S. 38-51-402 AND CANNOT BE RELIED UPON TO DETERMINE OWNERSHIP.


 RANDALL K. FRENCH
 PROFESSIONAL LAND SURVEYOR
 COLORADO REGISTRATION NUMBER 38512

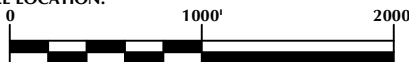
NOTICE: ACCORDING TO COLORADO STATE LAW YOU MUST COMMENCE ANY LEGAL ACTION BASED UPON ANY DEFECT IN THIS SURVEY WITHIN THREE YEARS AFTER YOU FIRST DISCOVER SUCH DEFECT. IN NO EVENT MAY ANY ACTION BASED UPON ANY DEFECT IN THIS SURVEY BE COMMENCED MORE THAN TEN YEARS FROM THE DATE ON THE CERTIFICATION SHOWN HEREON.

NOTE:
MAGNETIC NORTH IS CURRENT AS OF 9/10/2015.
MAGNETIC NORTH CHANGES WEST 0°06' PER YEAR.



NOTES:

1. ▲ INDICATES SECTION CORNER
2. ● INDICATES CALCULATED CORNER
3. ELEVATION BASED ON NAVD88 (GEOID09)
4. BASIS OF BEARING DERIVED FROM COLORADO COORDINATE SYSTEM OF 1983 NORTH ZONE.
5. ALL MEASURED DISTANCES ARE GRID.
6. COMBINED SCALE FACTOR: .99972911 CALCULATED FROM THE S. 1/4 CORNER OF SECTION 10, T2N, R68W
7. OPERATOR: ROB WILSON / PDOP = 1.5
8. SEE ADDENDUM TO WELL LOCATION CERTIFICATE FOR EXISTING IMPROVEMENTS WITHIN 500' OF THE WELL PAD.
9. WELL FOOTAGES ARE MEASURED AT RIGHT ANGLES TO THE SECTION LINES.
9. THE BOTTOM OF HOLE BEARS N00°04'03"E, 13567' FROM THE HELL LOCATION.



SCALE: 1" = 1000'

WELL PAD - CAMENISCH 36N-22HZ

CAMENISCH STATE 23N3-34HZ
WELL LOCATION CERTIFICATE
2228' FNL & 2223' FEL SWNE (SURFACE)
1587' FNL & 2282' FEL SWNE (HEEL)
LOCATED IN SECTION 15
T2N, R68W, 6TH P.M.
1470' FSL & 2254' FEL NWSE (BOTTOM)
LOCATED IN SECTION 34
T3N, R68W, 6TH P.M.
WELD COUNTY, COLORADO

**Kerr-McGee Oil &
Gas Onshore L.P.**
1099 18th Street
Denver, Colorado 80202



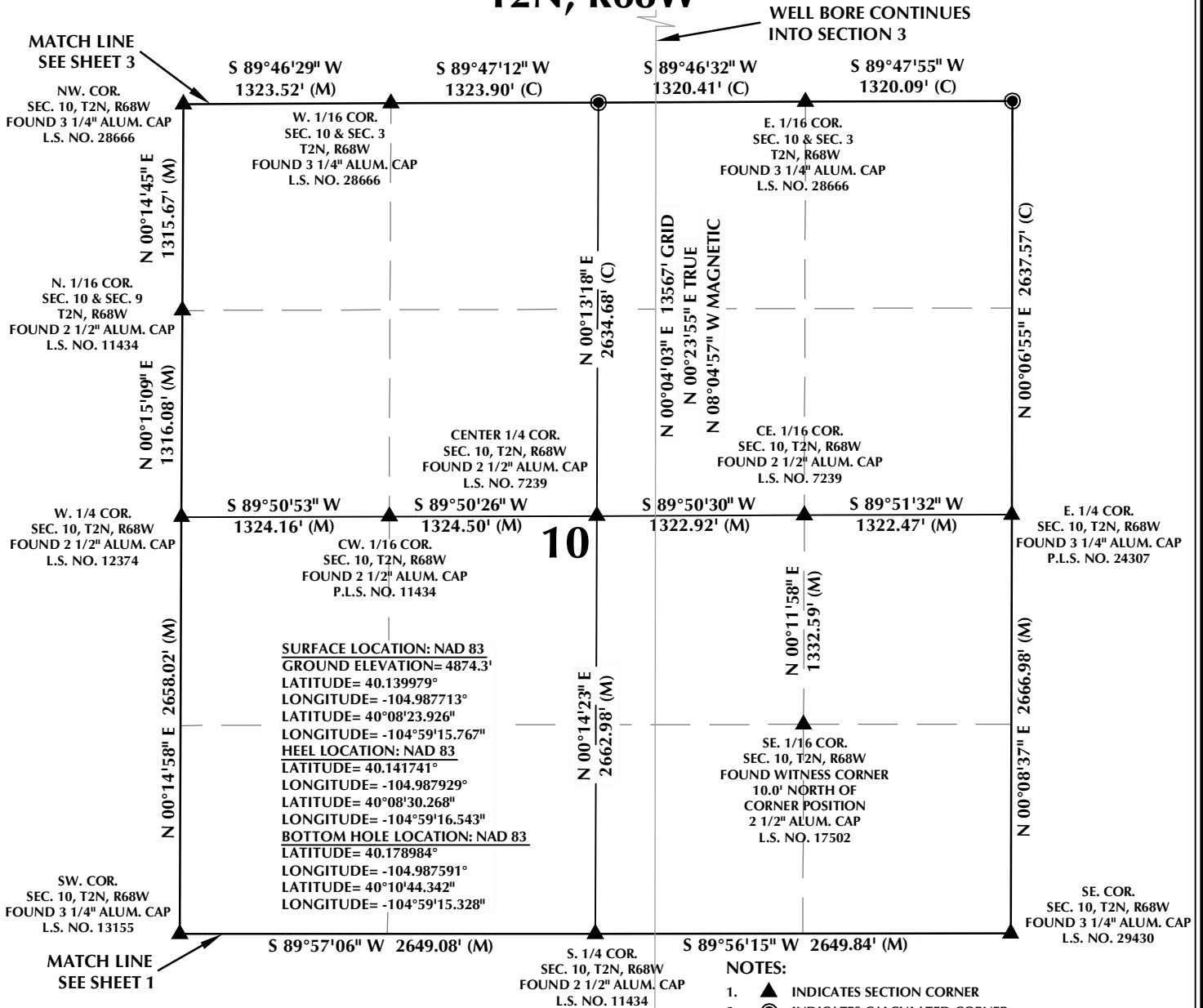
CONSULTING, LLC

SHERIDAN OFFICE
1095 Saberton Avenue
Sheridan, Wyoming 82801
Phone 307-674-0609

LOVELAND OFFICE
1635 Foxtrail Drive, Suite 204
Loveland, Colorado 80538
Phone 970-776-4331

| | | |
|-----------------------|------------------------|---------------------------------|
| DRAFTED BY: LMO | CHECKED BY: RKF | SHEET NO: 1 1 OF 4 |
| DATE DRAFTED: 9/28/15 | DATE SURVEYED: 7/15/15 | |
| REVISED: 10/17/16 | FILE NAME: 15-23 | |

T2N, R68W

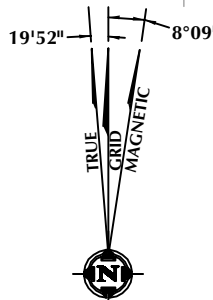


CERTIFICATE OF SURVEYOR:

THIS IS TO CERTIFY THAT THE ABOVE PLAT WAS PREPARED FROM FIELD NOTES OF ACTUAL SURVEY MADE BY ME OR UNDER MY SUPERVISION AND THAT THE SAME ARE TRUE AND CORRECT TO THE BEST OF MY KNOWLEDGE AND BELIEF. THIS CERTIFICATE DOES NOT REPRESENT A LAND SURVEY PLAT OR IMPROVEMENT SURVEY PLAT AS DEFINED BY C.R.S. 38-51-102 AND CANNOT BE RELIED UPON TO DETERMINE OWNERSHIP.

Randall K. French
 RANDALL K. FRENCH
 PROFESSIONAL LAND SURVEYOR
 COLORADO REGISTRATION NUMBER 18512
 10/17/16

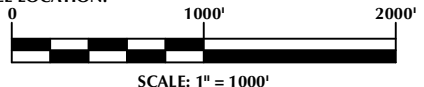
NOTICE:
 ACCORDING TO COLORADO STATE LAW YOU MUST COMMENCE ANY LEGAL ACTION BASED UPON ANY DEFECT IN THIS SURVEY WITHIN THREE YEARS AFTER YOU FIRST DISCOVER SUCH DEFECT. IN NO EVENT MAY ANY ACTION BASED UPON ANY DEFECT IN THIS SURVEY BE COMMENCED MORE THAN TEN YEARS FROM THE DATE ON THE CERTIFICATION SHOWN HEREON.



NOTE:
 MAGNETIC NORTH IS CURRENT AS OF 9/10/2015.
 MAGNETIC NORTH CHANGES WEST 0°06' PER YEAR.

NOTES:

- ▲ INDICATES SECTION CORNER
- INDICATES CALCULATED CORNER
- ELEVATION BASED ON NAVD88 (GEOID09)
- BASIS OF BEARING DERIVED FROM COLORADO COORDINATE SYSTEM OF 1983 NORTH ZONE.
- ALL MEASURED DISTANCES ARE GRID. COMBINED SCALE FACTOR: .99972911 CALCULATED FROM THE S. 1/4 CORNER OF SECTION 10, T2N, R68W
- OPERATOR: ROB WILSON / PDOP = 1.5
- SEE ADDENDUM TO WELL LOCATION CERTIFICATE FOR EXISTING IMPROVEMENTS WITHIN 500' OF THE WELL PAD.
- WELL FOOTAGES ARE MEASURED AT RIGHT ANGLES TO THE SECTION LINES.
- THE BOTTOM OF HOLE BEARS N00°04'03"E, 13567' FROM THE HEEL LOCATION.



WELL PAD - CAMENISCH 36N-22HZ

CAMENISCH STATE 23N3-34HZ
 WELL LOCATION CERTIFICATE
 2228' FNL & 2223' FEL SWNE (SURFACE)
 1587' FNL & 2282' FEL SWNE (HEEL)
 LOCATED IN SECTION 15
 T2N, R68W, 6TH P.M.
 1470' FSL & 2254' FEL NWSE (BOTTOM)
 LOCATED IN SECTION 34
 T3N, R68W, 6TH P.M.
 WELD COUNTY, COLORADO

**Kerr-McGee Oil &
 Gas Onshore L.P.**
 1099 18th Street
 Denver, Colorado 80202



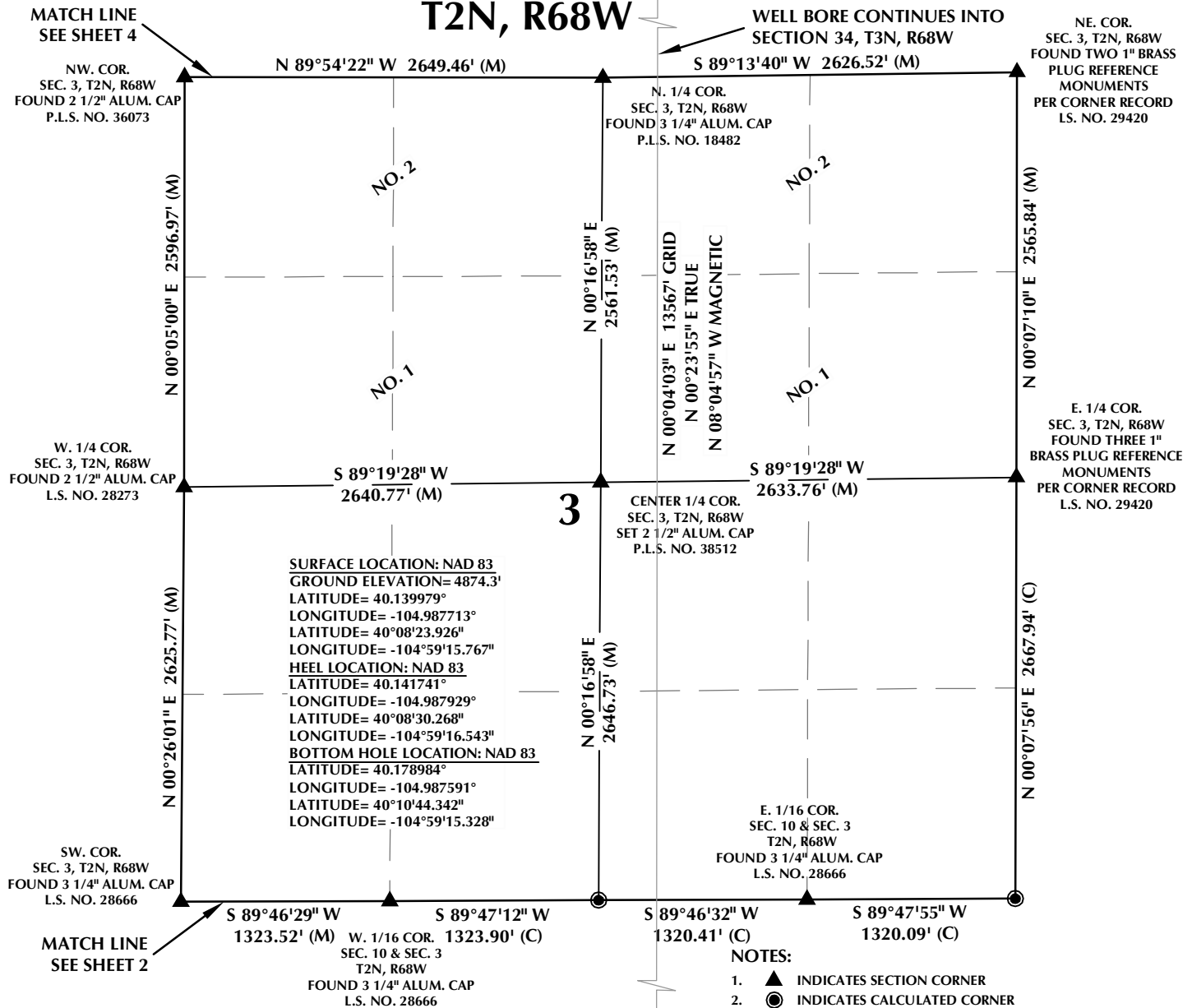
CONSULTING, LLC

SHERIDAN OFFICE
 1095 Saberton Avenue
 Sheridan, Wyoming 82801
 Phone 307-674-0609

LOVELAND OFFICE
 1635 Foxtrail Drive, Suite 204
 Loveland, Colorado 80538
 Phone 970-776-4331

| | | | | |
|---------------|----------|----------------|---------|-----------|
| DRAFTED BY: | LMO | CHECKED BY: | RKF | SHEET NO: |
| DATE DRAFTED: | 9/28/15 | DATE SURVEYED: | 7/15/15 | 2 |
| REVISED: | 10/17/16 | FILE NAME: | 15-23 | 2 OF 4 |

T2N, R68W



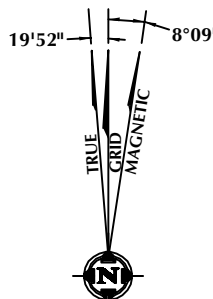
CERTIFICATE OF SURVEYOR:

THIS IS TO CERTIFY THAT THE ABOVE PLAT WAS PREPARED FROM FIELD NOTES OF ACTUAL SURVEY MADE BY ME OR UNDER MY SUPERVISION AND THAT THE SAME ARE TRUE AND CORRECT TO THE BEST OF MY KNOWLEDGE AND BELIEF. THIS CERTIFICATE DOES NOT REPRESENT A LAND SURVEY PLAT OR IMPROVEMENT SURVEY PLAT AS DEFINED BY C.R.S. 38-51-102 AND CANNOT BE RELIED UPON TO DETERMINE OWNERSHIP.

Randall K. French
 RANDALL K. FRENCH
 PROFESSIONAL LAND SURVEYOR
 COLORADO REGISTRATION NUMBER 18512
 10/17/16

NOTICE:
 ACCORDING TO COLORADO STATE LAW YOU MUST COMMENCE ANY LEGAL ACTION BASED UPON ANY DEFECT IN THIS SURVEY WITHIN THREE YEARS AFTER YOU FIRST DISCOVER SUCH DEFECT. IN NO EVENT MAY ANY ACTION BASED UPON ANY DEFECT IN THIS SURVEY BE COMMENCED MORE THAN TEN YEARS FROM THE DATE ON THE CERTIFICATION SHOWN HEREON.

NOTE:
 MAGNETIC NORTH IS CURRENT AS OF 9/10/2015.
 MAGNETIC NORTH CHANGES WEST 0°06' PER YEAR.



NOTES:

1. ▲ INDICATES SECTION CORNER
2. ● INDICATES CALCULATED CORNER
3. ELEVATION BASED ON NAVD88 (GEOID09)
4. BASIS OF BEARING DERIVED FROM COLORADO COORDINATE SYSTEM OF 1983 NORTH ZONE.
5. ALL MEASURED DISTANCES ARE GRID.
6. COMBINED SCALE FACTOR: .99972911 CALCULATED FROM THE S. 1/4 CORNER OF SECTION 10, T2N, R68W
7. OPERATOR: ROB WILSON / PDOP = 1.5
8. SEE ADDENDUM TO WELL LOCATION CERTIFICATE FOR EXISTING IMPROVEMENTS WITHIN 500' OF THE WELL PAD.
9. WELL FOOTAGES ARE MEASURED AT RIGHT ANGLES TO THE SECTION LINES.
10. THE BOTTOM OF HOLE BEARS N00°04'03"E, 13567' FROM THE HEEL LOCATION.
11. NO. 1 & NO. 2 AS SHOWN HEREON ARE GOVERNMENT LOTS 1 & 2 PER THE ORIGINAL GLO SURVEY



SCALE: 1" = 1000'

WELL PAD - CAMENISCH 36N-22HZ

CAMENISCH STATE 23N3-34HZ
 WELL LOCATION CERTIFICATE
 2228' FNL & 2223' FEL SWNE (SURFACE)
 1587' FNL & 2282' FEL SWNE (HEEL)
 LOCATED IN SECTION 15
 T2N, R68W, 6TH P.M.
 1470' FSL & 2254' FEL NWSE (BOTTOM)
 LOCATED IN SECTION 34
 T3N, R68W, 6TH P.M.
 WELD COUNTY, COLORADO

**Kerr-McGee Oil &
 Gas Onshore L.P.**
 1099 18th Street
 Denver, Colorado 80202



CONSULTING, LLC

SHERIDAN OFFICE
 1095 Saberton Avenue
 Sheridan, Wyoming 82801
 Phone 307-674-0609

LOVELAND OFFICE
 1635 Foxtrail Drive, Suite 204
 Loveland, Colorado 80538
 Phone 970-776-4331

| | | | | |
|---------------|----------|----------------|---------|-----------|
| DRAFTED BY: | LMO | CHECKED BY: | RKF | SHEET NO: |
| DATE DRAFTED: | 9/28/15 | DATE SURVEYED: | 7/15/15 | 3 |
| REVISED: | 10/17/16 | FILE NAME: | 15-23 | 3 OF 4 |

T3N, R68W

NW. COR.
SEC. 34, T3N, R68W
FOUND 2 1/2" ALUM. CAP
P.L.S. NO. 34591

S 89°07'13" W 2565.53' (M)

S 89°07'15" W 2656.24' (M)

NE. COR.
SEC. 34, T3N, R68W
FOUND 3 1/4" ALUM. CAP
P.L.S. NO. 29420

N. 1/4 COR.
SEC. 34, T3N, R68W
FOUND 2 1/2" ALUM. CAP
L.S. NO. 38459

SURFACE LOCATION: NAD 83
GROUND ELEVATION= 4874.3'
LATITUDE= 40.139979°
LONGITUDE= -104.987713°
LATITUDE= 40°08'23.926"
LONGITUDE= -104°59'15.767"
HEEL LOCATION: NAD 83
LATITUDE= 40.141741°
LONGITUDE= -104.987929°
LATITUDE= 40°08'30.268"
LONGITUDE= -104°59'16.543"
BOTTOM HOLE LOCATION: NAD 83
LATITUDE= 40.178984°
LONGITUDE= -104.987591°
LATITUDE= 40°10'44.342"
LONGITUDE= -104°59'15.328"

CENTER 1/4 COR.
SEC. 34, T3N, R68W
FOUND 2 1/2" ALUM. CAP
P.L.S. NO. 7735

34

W. 1/4 COR.
SEC. 34, T3N, R68W
FOUND 3 1/4" ALUM. CAP
P.L.S. NO. 34591

S 89°07'26" W
2573.32' (M)

S 89°34'05" W
2673.11' (M)

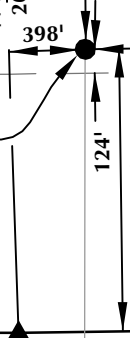
E. 1/4 COR.
SEC. 34, T3N, R68W
FOUND 3 1/4" ALUM. CAP
P.L.S. NO. 29420

N 00°18'58" W 2650.43' (M)

N 01°56'09" W
2695.62' (M)

N 00°56'51" W 2679.21' (M)

BOTTOM OF HOLE:
1470' FSL & 2254' FEL



SW. COR.
SEC. 34, T3N, R68W
FOUND 2 1/2" ALUM. CAP
P.L.S. NO. 36073

N 89°54'22" W 2649.46' (M)

S. 1/4 COR.
SEC. 34, T3N, R68W
FOUND 3 1/4" ALUM. CAP
P.L.S. NO. 18482

S 89°13'40" W 2626.52' (M)

SE. COR.
SEC. 34, T3N, R68W
FOUND TWO 1" BRASS
PLUG REFERENCE
MONUMENTS
PER CORNER RECORD
L.S. NO. 29420

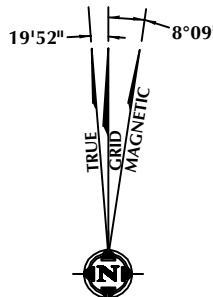
MATCH LINE
SEE SHEET 3

CERTIFICATE OF SURVEYOR:

THIS IS TO CERTIFY THAT THE ABOVE PLAT WAS PREPARED FROM FIELD NOTES OF ACTUAL SURVEY MADE BY ME OR UNDER MY SUPERVISION AND THAT THE SAME ARE TRUE AND CORRECT TO THE BEST OF MY KNOWLEDGE AND BELIEF. THIS CERTIFICATE DOES NOT REPRESENT A LAND SURVEY PLAT OR IMPROVEMENT SURVEY PLAT AS DEFINED BY C.R.S. 38-51-102 AND CANNOT BE RELIED UPON TO DETERMINE OWNERSHIP.

Randall K. French
RANDALL K. FRENCH
PROFESSIONAL LAND SURVEYOR
COLORADO REGISTRATION NUMBER 18512
10/17/16

NOTICE:
ACCORDING TO COLORADO STATE LAW YOU MUST COMMENCE ANY LEGAL ACTION BASED UPON ANY DEFECT IN THIS SURVEY WITHIN THREE YEARS AFTER YOU FIRST DISCOVER SUCH DEFECT. IN NO EVENT MAY ANY ACTION BASED UPON ANY DEFECT IN THIS SURVEY BE COMMENCED MORE THAN TEN YEARS FROM THE DATE ON THE CERTIFICATION SHOWN HEREON.



NOTE:
MAGNETIC NORTH IS CURRENT AS OF 9/10/2015.
MAGNETIC NORTH CHANGES WEST 0°06' PER YEAR.

NOTES:

- ▲ INDICATES SECTION CORNER
- INDICATES CALCULATED CORNER
- ELEVATION BASED ON NAVD88 (GEOID09)
- BASIS OF BEARING DERIVED FROM COLORADO COORDINATE SYSTEM OF 1983 NORTH ZONE.
- ALL MEASURED DISTANCES ARE GRID.
- COMBINED SCALE FACTOR: .99972911 CALCULATED FROM THE S. 1/4 CORNER OF SECTION 10, T2N, R68W
- OPERATOR: ROB WILSON / PDOP = 1.5
- SEE ADDENDUM TO WELL LOCATION CERTIFICATE FOR EXISTING IMPROVEMENTS WITHIN 500' OF THE WELL PAD.
- WELL FOOTAGES ARE MEASURED AT RIGHT ANGLES TO THE SECTION LINES.
- THE BOTTOM OF HOLE BEARS N00°04'03"E, 13567' FROM THE HEEL LOCATION.



SCALE: 1" = 1000'

WELL PAD - CAMENISCH 36N-22HZ

CAMENISCH STATE 23N3-34HZ
WELL LOCATION CERTIFICATE
2228' FNL & 2223' FEL SWNE (SURFACE)
1587' FNL & 2282' FEL SWNE (HEEL)
LOCATED IN SECTION 15
T2N, R68W, 6TH P.M.
1470' FSL & 2254' FEL NWSE (BOTTOM)
LOCATED IN SECTION 34
T3N, R68W, 6TH P.M.
WELD COUNTY, COLORADO

**Kerr-McGee Oil &
Gas Onshore L.P.**
1099 18th Street
Denver, Colorado 80202

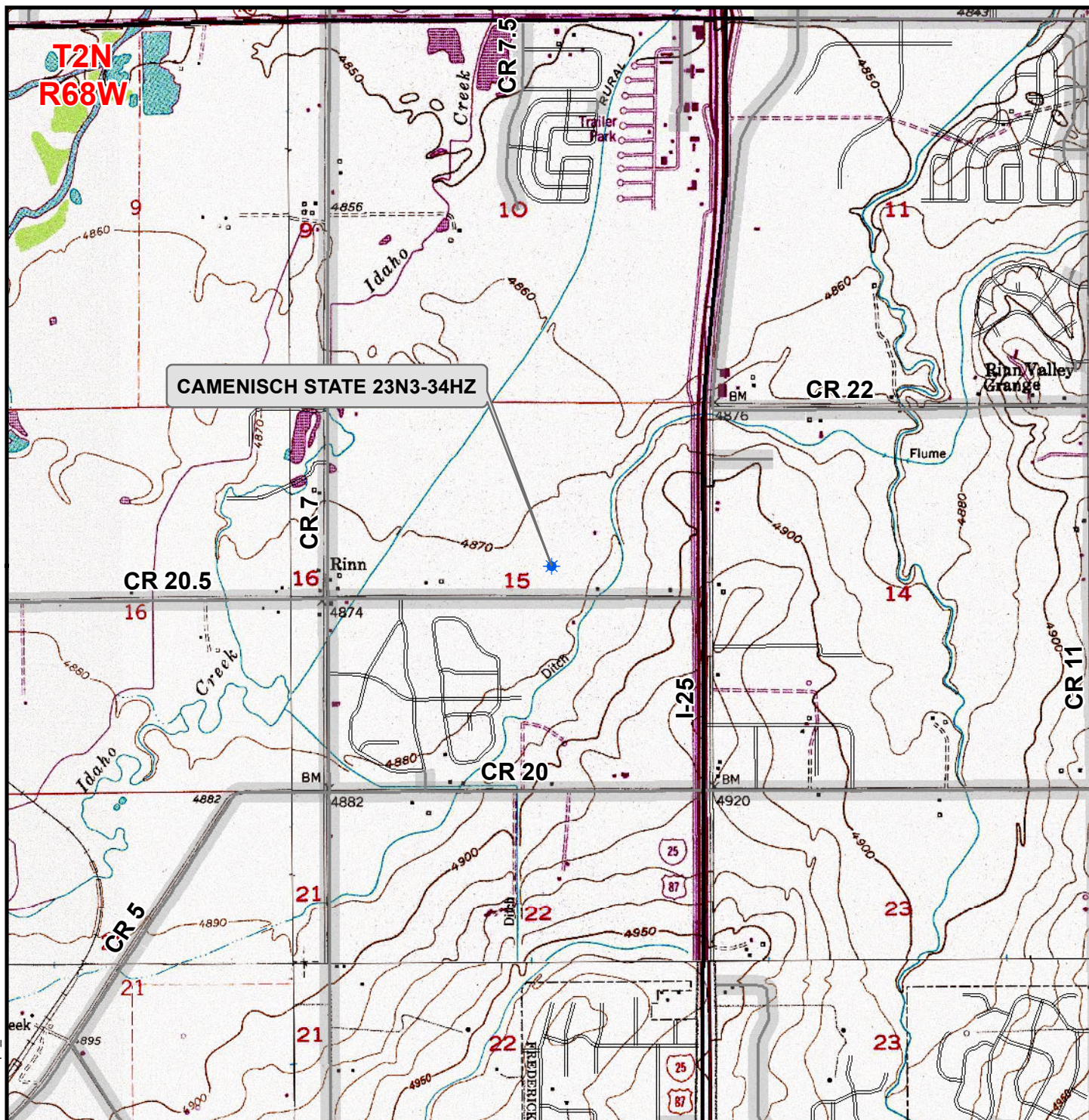


CONSULTING, LLC

SHERIDAN OFFICE
1095 Saberton Avenue
Sheridan, Wyoming 82801
Phone 307-674-0609

LOVELAND OFFICE
1635 Foxtrail Drive, Suite 204
Loveland, Colorado 80538
Phone 970-776-4331

| | | |
|------------------------|------------------------|-------------|
| DRAFTED BY: LMO | CHECKED BY: RKF | SHEET NO: 4 |
| DATE DRAFTED: 10/17/16 | DATE SURVEYED: 7/15/15 | 4 OF 4 |
| REVISED: | FILE NAME: 15-23 | |



Legend

- ★ Well - Fee - Proposed Road - Primitive - Existing Road - County - Existing
- ★ Well - State - Proposed Road - Improved - Existing Road - Highway - Existing

WELL PAD - CAMENISCH 36N-22HZ

**GENERAL LOCATION MAP
CAMENISCH STATE 23N3-34HZ
LOCATED IN SECTION 15
T2N, R68W, 6th P.M.
WELD COUNTY, COLORADO**

**Kerr-McGee Oil &
Gas Onshore L.P.**

1099 18th Street
Denver, Colorado 80202



CONSULTING, LLC

SHERIDAN OFFICE
1095 Saberton Avenue
Sheridan, Wyoming 82801
Phone 307-674-0609

LOVELAND OFFICE
1635 Foxtail Drive, Suite 204
Loveland, Colorado 80538
Phone 970-776-4331



SCALE: 1" = 2,000ft

NAD83 CO-Nft

DRAWN: TL

DATE: 29 Sept 2015

REVISED: DP

DATE: 14 Oct 2016