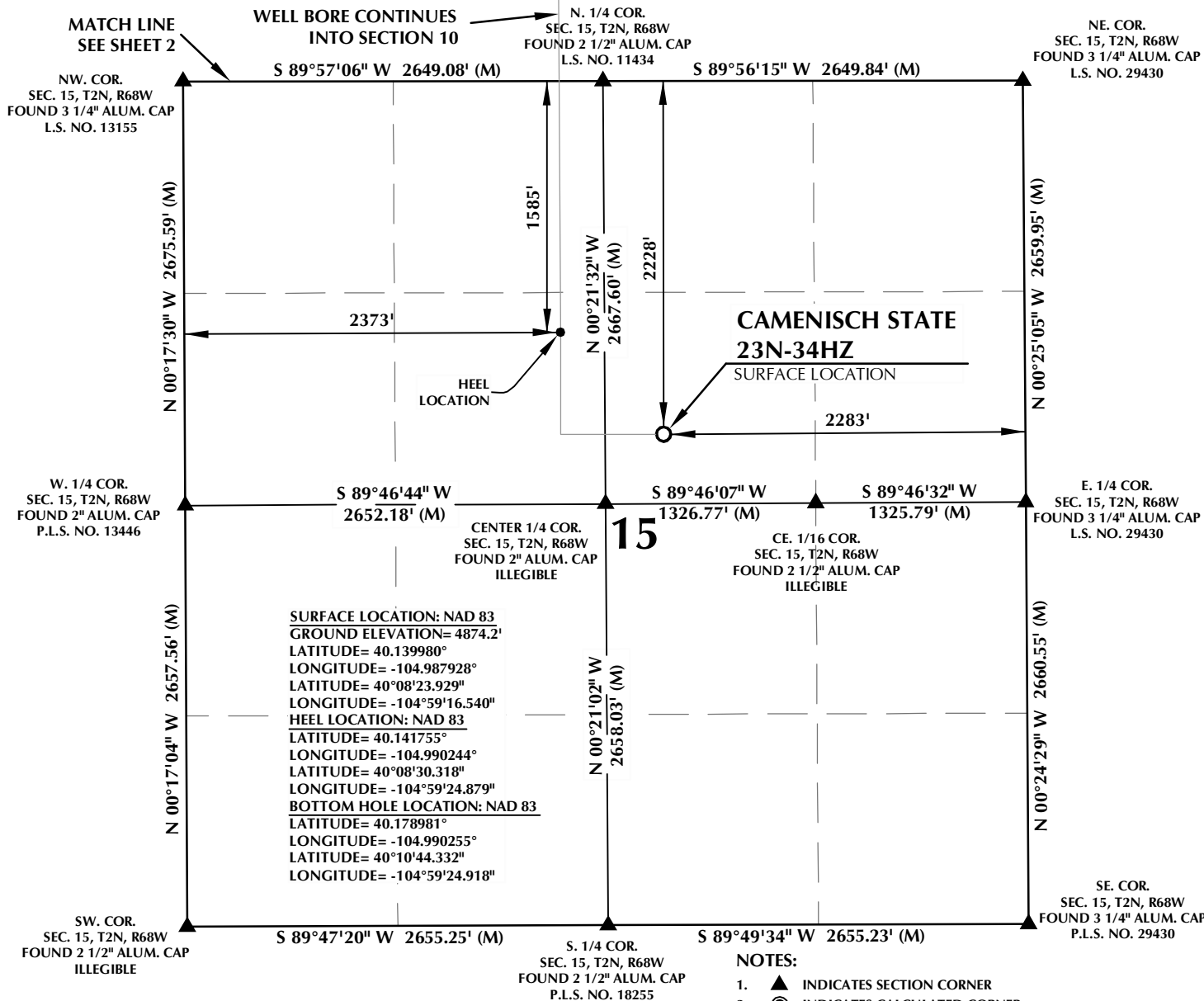


T2N, R68W

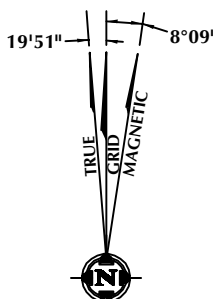


CERTIFICATE OF SURVEYOR:

THIS IS TO CERTIFY THAT THE ABOVE PLAT WAS PREPARED FROM FIELD NOTES OF ACTUAL SURVEY MADE BY ME OR UNDER MY SUPERVISION AND THAT THE SAME ARE TRUE AND CORRECT TO THE BEST OF MY KNOWLEDGE AND BELIEF. THIS CERTIFICATE DOES NOT REPRESENT A LAND SURVEY PLAT OR IMPROVEMENT SURVEY PLAT AS DEFINED BY C.R.S. 38-51-102 AND CANNOT BE RELIED UPON TO DETERMINE OWNERSHIP.

*Randall K. French*  
RANDALL K. FRENCH  
PROFESSIONAL LAND SURVEYOR  
COLORADO REGISTRATION NUMBER 18512  
10/17/16

NOTICE:  
ACCORDING TO COLORADO STATE LAW YOU MUST COMMENCE ANY LEGAL ACTION BASED UPON ANY DEFECT IN THIS SURVEY WITHIN THREE YEARS AFTER YOU FIRST DISCOVER SUCH DEFECT. IN NO EVENT MAY ANY ACTION BASED UPON ANY DEFECT IN THIS SURVEY BE COMMENCED MORE THAN TEN YEARS FROM THE DATE ON THE CERTIFICATION SHOWN HEREON.



NOTE:  
MAGNETIC NORTH IS CURRENT AS OF 9/10/2015.  
MAGNETIC NORTH CHANGES WEST 0°06' PER YEAR.

NOTES:

- ▲ INDICATES SECTION CORNER
- INDICATES CALCULATED CORNER
- ELEVATION BASED ON NAVD88 (GEOID09)
- BASIS OF BEARING DERIVED FROM COLORADO COORDINATE SYSTEM OF 1983 NORTH ZONE.
- ALL MEASURED DISTANCES ARE GRID.  
COMBINED SCALE FACTOR: .99972911 CALCULATED FROM THE S. 1/4 CORNER OF SECTION 10, T2N, R68W
- OPERATOR: ROB WILSON / PDOP = 1.7
- SEE ADDENDUM TO WELL LOCATION CERTIFICATE FOR EXISTING IMPROVEMENTS WITHIN 500' OF THE WELL PAD.
- WELL FOOTAGES ARE MEASURED AT RIGHT ANGLES TO THE SECTION LINES.
- THE BOTTOM OF HOLE BEARS N00°20'32"W, 13561' FROM THE HEEL LOCATION.



SCALE: 1" = 1000'

WELL PAD - CAMENISCH 36N-22HZ

CAMENISCH STATE 23N-34HZ  
WELL LOCATION CERTIFICATE  
2228' FNL & 2283' FEL SWNE (SURFACE)  
1585' FNL & 2373' FWL SENW (HEEL)  
LOCATED IN SECTION 15  
T2N, R68W, 6TH P.M.  
1469' FSL & 2261' FWL NESW (BOTTOM)  
LOCATED IN SECTION 34  
T3N, R68W, 6TH P.M.  
WELD COUNTY, COLORADO

Kerr-McGee Oil &  
Gas Onshore L.P.  
1099 18th Street  
Denver, Colorado 80202



CONSULTING, LLC

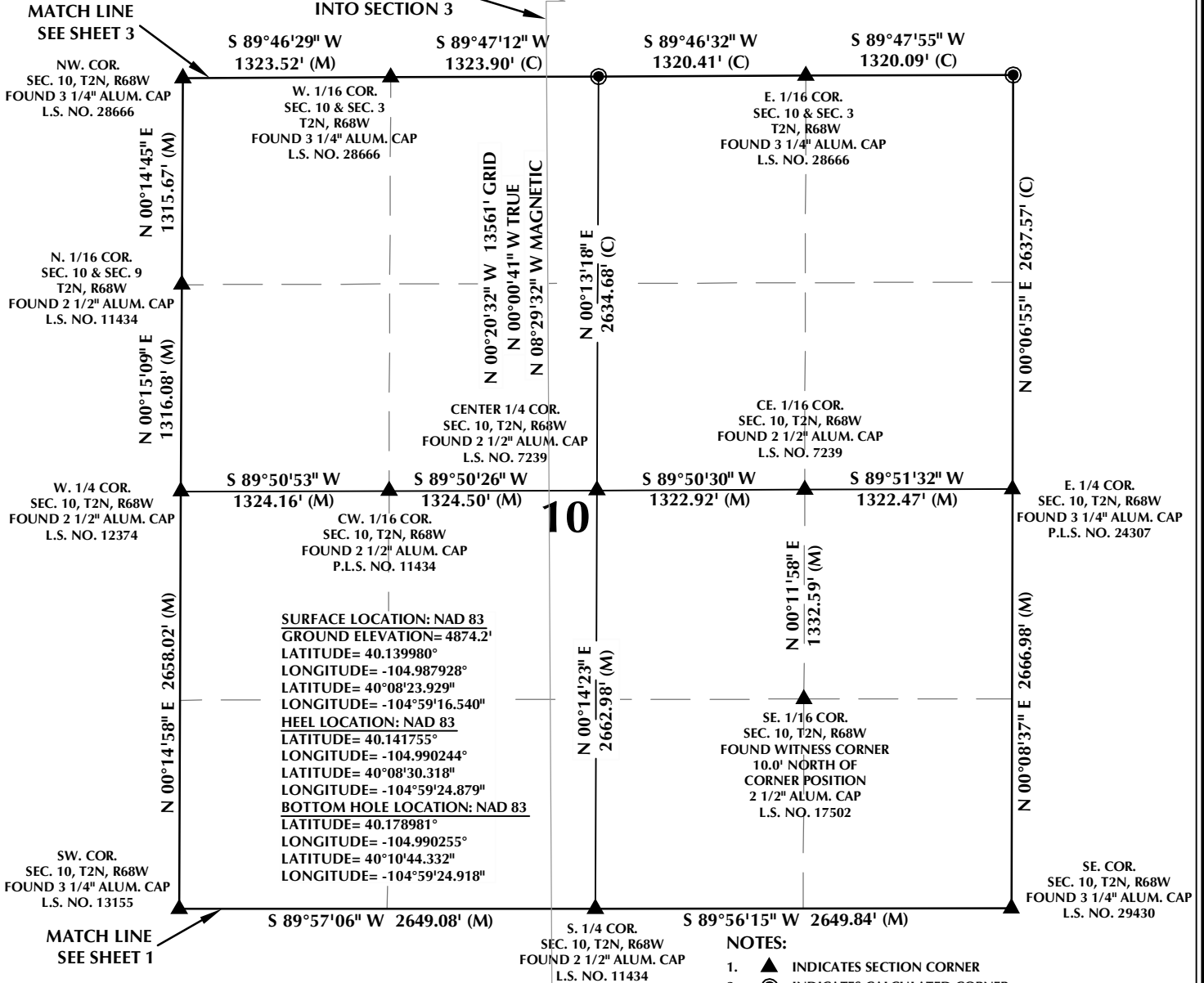
SHERIDAN OFFICE  
1095 Saberton Avenue  
Sheridan, Wyoming 82801  
Phone 307-674-0609

LOVELAND OFFICE  
1635 Foxtrail Drive, Suite 204  
Loveland, Colorado 80538  
Phone 970-776-4331

DRAFTED BY:	LMO	CHECKED BY:	RKF	SHEET NO:
DATE DRAFTED:	9/28/15	DATE SURVEYED:	7/15/15	1
REVISED:	10/17/16	FILE NAME:	15-23	1 OF 4

T2N, R68W

WELL BORE CONTINUES  
INTO SECTION 3



# CERTIFICATE OF SURVEYOR:

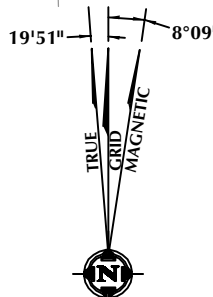
THIS IS TO CERTIFY THAT THE ABOVE PLAT WAS PREPARED FROM FIELD NOTES OF ACTUAL SURVEY MADE BY ME OR UNDER MY SUPERVISION AND THAT THE SAME ARE TRUE AND CORRECT TO THE BEST OF MY KNOWLEDGE AND BELIEF. THIS CERTIFICATE DOES NOT REPRESENT A LAND SURVEY PLAT OR IMPROVEMENT SURVEY PLAT AS DEFINED BY C.R.S. 38-51-102 AND CANNOT BE RELIED UPON TO DETERMINE OWNERSHIP.

*Randall K. French*  
PROFESSIONAL LAND SURVEYOR  
COLORADO REGISTRATION NUMBER 18512

RANDALL K. FRENCH  
PROFESSIONAL LAND SURVEYOR  
COLORADO REGISTRATION NUMBER 18512

NOTICE:  
ACCORDING TO COLORADO STATE LAW YOU MUST COMMENCE ANY LEGAL ACTION BASED UPON ANY DEFECT IN THIS SURVEY WITHIN THREE YEARS AFTER YOU FIRST DISCOVER SUCH DEFECT. IN NO EVENT MAY ANY ACTION BASED UPON ANY DEFECT IN THIS SURVEY BE COMMENCED MORE THAN TEN YEARS FROM THE DATE ON THE CERTIFICATION SHOWN HEREON.

NOTE:  
MAGNETIC NORTH IS CURRENT AS OF 9/10/2015.  
MAGNETIC NORTH CHANGES WEST 0°06' PER YEAR.



## WELL PAD - CAMENISCH 36N-22HZ

CAMENISCH STATE 23N-34HZ  
WELL LOCATION CERTIFICATE  
2228' FNL & 2283' FEL SWNE (SURFACE)  
1585' FNL & 2373' FWL SENW (HEEL)  
LOCATED IN SECTION 15  
T2N, R68W, 6TH P.M.  
1469' FSL & 2261' FWL NESW (BOTTOM)  
LOCATED IN SECTION 34  
T3N, R68W, 6TH P.M.  
WELD COUNTY, COLORADO

**Kerr-McGee Oil &  
Gas Onshore L.P.**  
1099 18th Street  
Denver, Colorado 80202



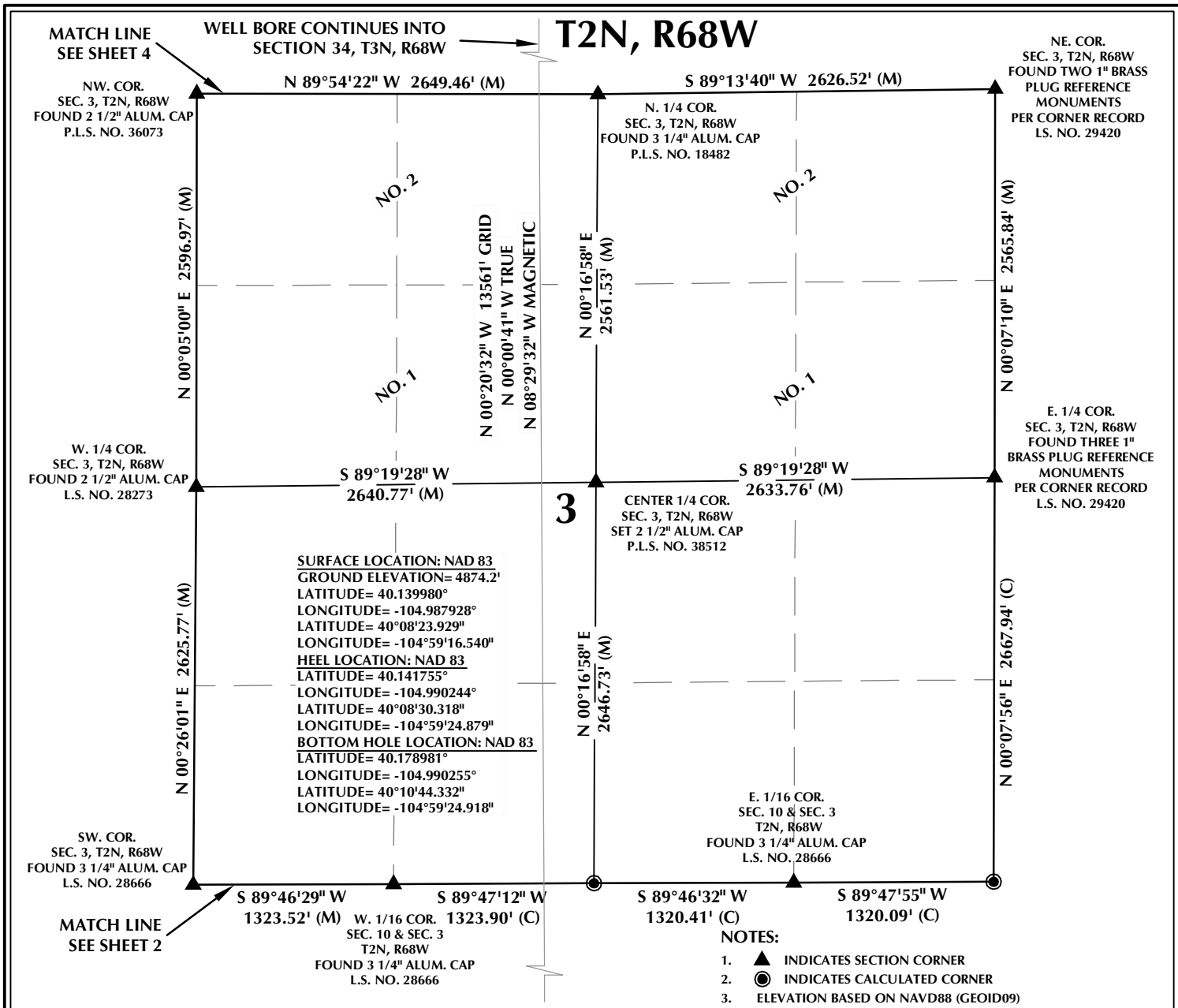
## CONSULTING, LLC

SHERIDAN OFFICE  
1095 Saberton Avenue  
Sheridan, Wyoming 82801  
Phone 307-674-0609

LOVELAND OFFICE  
1635 Foxtrail Drive, Suite 204  
Loveland, Colorado 80538  
Phone 970-776-4331

DRAFTED BY:	LMO	CHECKED BY:	RKF	SHEET NO:
DATE DRAFTED:	9/28/15	DATE SURVEYED:	7/15/15	2
REVISED:	10/17/16	FILE NAME:	15-23	2 OF 4

K:\LAND\2015\2015.23\_CAMENISCH\_SEC.15\_T2N\_R68W\PLATS\CAMENISCH\_36N-22HZ.dwg, 10/17/2016 2:56:46 PM, lbg

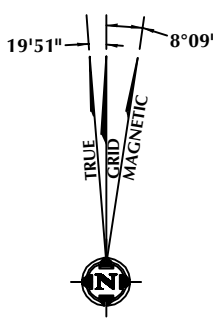


**CERTIFICATE OF SURVEYOR:**

THIS IS TO CERTIFY THAT THE ABOVE PLAT WAS PREPARED FROM FIELD NOTES OF ACTUAL SURVEY MADE BY ME OR UNDER MY SUPERVISION AND THAT THE SAME ARE TRUE AND CORRECT TO THE BEST OF MY KNOWLEDGE AND BELIEF. THIS CERTIFICATE DOES NOT REPRESENT A LAND SURVEY PLAT OR IMPROVEMENT SURVEY PLAT AS DEFINED BY C.R.S. 38-51-102 AND CANNOT BE RELIED UPON TO DETERMINE OWNERSHIP.

**Randall K. French**  
PROFESSIONAL LAND SURVEYOR  
COLORADO REGISTRATION NUMBER 18512  
10/17/16

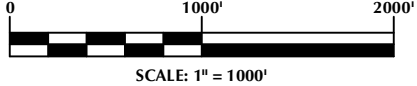
**NOTICE:**  
ACCORDING TO COLORADO STATE LAW YOU MUST COMMENCE ANY LEGAL ACTION BASED UPON ANY DEFECT IN THIS SURVEY WITHIN THREE YEARS AFTER YOU FIRST DISCOVER SUCH DEFECT. IN NO EVENT MAY ANY ACTION BASED UPON ANY DEFECT IN THIS SURVEY BE COMMENCED MORE THAN TEN YEARS FROM THE DATE ON THE CERTIFICATION SHOWN HEREON.



**NOTE:**  
MAGNETIC NORTH IS CURRENT AS OF 9/10/2015.  
MAGNETIC NORTH CHANGES WEST 0°06' PER YEAR.

**NOTES:**

1. ▲ INDICATES SECTION CORNER
2. ● INDICATES CALCULATED CORNER
3. ELEVATION BASED ON NAVD88 (GEOID09)
4. BASIS OF BEARING DERIVED FROM COLORADO COORDINATE SYSTEM OF 1983 NORTH ZONE.
5. ALL MEASURED DISTANCES ARE GRID.
6. COMBINED SCALE FACTOR: .99972911 CALCULATED FROM THE S. 1/4 CORNER OF SECTION 10, T2N, R68W
7. OPERATOR: ROB WILSON / PDOP = 1.7
8. SEE ADDENDUM TO WELL LOCATION CERTIFICATE FOR EXISTING IMPROVEMENTS WITHIN 500' OF THE WELL PAD.
9. WELL FOOTAGES ARE MEASURED AT RIGHT ANGLES TO THE SECTION LINES.
10. THE BOTTOM OF HOLE BEARS N00°20'32"W, 13561' FROM THE HEEL LOCATION.
11. NO. 1 & NO. 2 AS SHOWN HEREON ARE GOVERNMENT LOTS 1 & 2 PER THE ORIGINAL GLO SURVEY



<div>WELL PAD - CAMENISCH 36N-22HZ</div>		<div>Kerr-McGee Oil &amp; Gas Onshore L.P.</div> <div>1099 18th Street Denver, Colorado 80202</div>	<div>CONSULTING, LLC</div> <div><div>SHERIDAN OFFICE 1095 Saberton Avenue Sheridan, Wyoming 82801 Phone 307-674-0609</div><div>LOVELAND OFFICE 1635 Foxtrail Drive, Suite 204 Loveland, Colorado 80538 Phone 970-776-4331</div></div>		
<div>CAMENISCH STATE 23N-34HZ WELL LOCATION CERTIFICATE 2228' FNL &amp; 2283' FEL SWNE (SURFACE) 1585' FNL &amp; 2373' FWL SENW (HEEL) LOCATED IN SECTION 15 T2N, R68W, 6TH P.M. 1469' FSL &amp; 2261' FWL NESW (BOTTOM) LOCATED IN SECTION 34 T3N, R68W, 6TH P.M. WELD COUNTY, COLORADO</div>			<div>DRAFTED BY: LMO</div>	<div>CHECKED BY: RKF</div>	<div>SHEET NO: 3 3 OF 4</div>
			<div>DATE DRAFTED: 9/28/15</div>	<div>DATE SURVEYED: 7/15/15</div>	
			<div>REVISED: 10/17/16</div>	<div>FILE NAME: 15-23</div>	

# T3N, R68W

NW. COR.  
SEC. 34, T3N, R68W  
FOUND 2 1/2" ALUM. CAP  
P.L.S. NO. 34591

S 89°07'13" W 2565.53' (M)

S 89°07'15" W 2656.24' (M)

NE. COR.  
SEC. 34, T3N, R68W  
FOUND 3 1/4" ALUM. CAP  
P.L.S. NO. 29420

N. 1/4 COR.  
SEC. 34, T3N, R68W  
FOUND 2 1/2" ALUM. CAP  
L.S. NO. 38459

**SURFACE LOCATION: NAD 83**  
GROUND ELEVATION= 4874.2'  
LATITUDE= 40.139980°  
LONGITUDE= -104.987928°  
LATITUDE= 40°08'23.929"  
LONGITUDE= -104°59'16.540"  
**HEEL LOCATION: NAD 83**  
LATITUDE= 40.141755°  
LONGITUDE= -104.990244°  
LATITUDE= 40°08'30.318"  
LONGITUDE= -104°59'24.879"  
**BOTTOM HOLE LOCATION: NAD 83**  
LATITUDE= 40.178981°  
LONGITUDE= -104.990255°  
LATITUDE= 40°10'44.332"  
LONGITUDE= -104°59'24.918"

N 00°24'46" W 2658.27' (M)

N 00°34'50" W 2658.38' (M)

N 00°56'31" W 2679.21' (M)

CENTER 1/4 COR.  
SEC. 34, T3N, R68W  
FOUND 2 1/2" ALUM. CAP  
P.L.S. NO. 7735

34

W. 1/4 COR.  
SEC. 34, T3N, R68W  
FOUND 3 1/4" ALUM. CAP  
P.L.S. NO. 34591

S 89°07'26" W 2573.32' (M)

S 89°34'05" W 2673.11' (M)

E. 1/4 COR.  
SEC. 34, T3N, R68W  
FOUND 3 1/4" ALUM. CAP  
P.L.S. NO. 29420

N 00°18'58" W 2650.43' (M)

BOTTOM OF HOLE:  
1469' FSL & 2261' FWL

2261'

958'

1220'

346'

1469'

N 01°56'09" W 2695.62' (M)

N 00°56'51" W 2679.21' (M)

SW. COR.  
SEC. 34, T3N, R68W  
FOUND 2 1/2" ALUM. CAP  
P.L.S. NO. 36073

N 89°54'22" W 2649.46' (M)

S. 1/4 COR.  
SEC. 34, T3N, R68W  
FOUND 3 1/4" ALUM. CAP  
P.L.S. NO. 18482

S 89°13'40" W 2626.52' (M)

SE. COR.  
SEC. 34, T3N, R68W  
FOUND TWO 1" BRASS  
PLUG REFERENCE  
MONUMENTS  
PER CORNER RECORD  
L.S. NO. 29420

MATCH LINE  
SEE SHEET 3

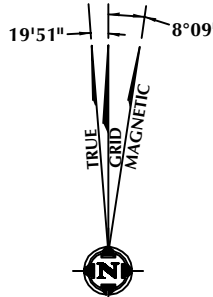
## CERTIFICATE OF SURVEYOR:

THIS IS TO CERTIFY THAT THE ABOVE PLAT WAS PREPARED FROM FIELD NOTES OF ACTUAL SURVEY MADE BY ME OR UNDER MY SUPERVISION AND THAT THE SAME ARE TRUE AND CORRECT TO THE BEST OF MY KNOWLEDGE AND BELIEF. THIS CERTIFICATE DOES NOT REPRESENT A LAND SURVEY PLAT OR IMPROVEMENT SURVEY PLAT AS DEFINED BY C.R.S. 38-51-102 AND CANNOT BE RELIED UPON TO DETERMINE OWNERSHIP.

*Randall K. French*  
38512

RANDALL K. FRENCH  
PROFESSIONAL LAND SURVEYOR  
COLORADO REGISTRATION NUMBER 18512

NOTICE:  
ACCORDING TO COLORADO STATE LAW YOU MUST COMMENCE ANY LEGAL ACTION BASED UPON ANY DEFECT IN THIS SURVEY WITHIN THREE YEARS AFTER YOU FIRST DISCOVER SUCH DEFECT. IN NO EVENT MAY ANY ACTION BASED UPON ANY DEFECT IN THIS SURVEY BE COMMENCED MORE THAN TEN YEARS FROM THE DATE ON THE CERTIFICATION SHOWN HEREON.



NOTE:  
MAGNETIC NORTH IS CURRENT AS OF 9/10/2015.  
MAGNETIC NORTH CHANGES WEST 0°06' PER YEAR.

## NOTES:

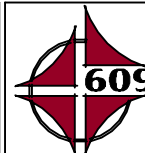
- ▲ INDICATES SECTION CORNER
- INDICATES CALCULATED CORNER
- ELEVATION BASED ON NAVD88 (GEOID09)
- BASIS OF BEARING DERIVED FROM COLORADO COORDINATE SYSTEM OF 1983 NORTH ZONE.
- ALL MEASURED DISTANCES ARE GRID.
- COMBINED SCALE FACTOR: .99972911 CALCULATED FROM THE S. 1/4 CORNER OF SECTION 10, T2N, R68W
- OPERATOR: ROB WILSON / PDOP = 1.7
- SEE ADDENDUM TO WELL LOCATION CERTIFICATE FOR EXISTING IMPROVEMENTS WITHIN 500' OF THE WELL PAD.
- WELL FOOTAGES ARE MEASURED AT RIGHT ANGLES TO THE SECTION LINES.
- THE BOTTOM OF HOLE BEARS N00°20'32"W, 13561' FROM THE HEEL LOCATION.



## WELL PAD - CAMENISCH 36N-22HZ

CAMENISCH STATE 23N-34HZ  
WELL LOCATION CERTIFICATE  
2228' FNL & 2283' FEL SWNE (SURFACE)  
1585' FNL & 2373' FWL SENW (HEEL)  
LOCATED IN SECTION 15  
T2N, R68W, 6TH P.M.  
1469' FSL & 2261' FWL NESW (BOTTOM)  
LOCATED IN SECTION 34  
T3N, R68W, 6TH P.M.  
WELD COUNTY, COLORADO

**Kerr-McGee Oil &  
Gas Onshore L.P.**  
1099 18th Street  
Denver, Colorado 80202



## CONSULTING, LLC

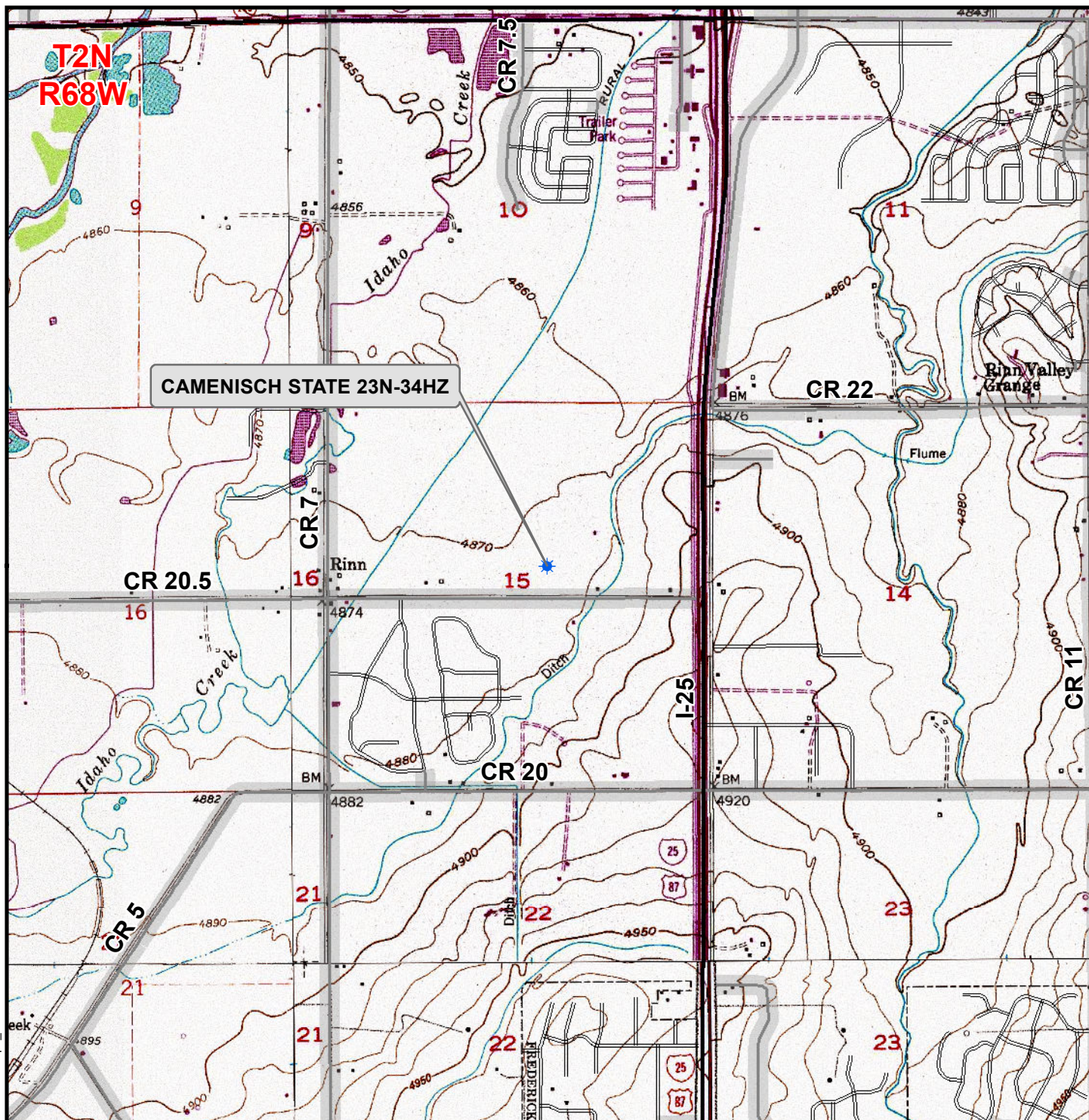
SHERIDAN OFFICE  
1095 Saberton Avenue  
Sheridan, Wyoming 82801  
Phone 307-674-0609

LOVELAND OFFICE  
1635 Foxtrail Drive, Suite 204  
Loveland, Colorado 80538  
Phone 970-776-4331

DRAFTED BY: LMO	CHECKED BY: RKF	SHEET NO: 4
DATE DRAFTED: 10/17/16	DATE SURVEYED: 7/15/15	4 OF 4
REVISED:	FILE NAME: 15-23	



K:\ANADARKO\201502015\_23\_CAMENISCH\_SEC\_15\_T2N\_R68W\GIS\Maps\_ABC\CAMENISCH 36N-22HZ\CAMENISCH STATE 23N-34HZ.mxd 10/14/2016 4:02:28 PM



### Legend

- Well - Fee - Proposed
- Well - State - Proposed
- Road - Primitive - Existing
- Road - Improved - Existing
- Road - County - Existing
- Road - Highway - Existing

WELL PAD - CAMENISCH 36N-22HZ

**GENERAL LOCATION MAP  
CAMENISCH STATE 23N-34HZ  
LOCATED IN SECTION 15  
T2N, R68W, 6th P.M.  
WELD COUNTY, COLORADO**

**Kerr-McGee Oil &  
Gas Onshore L.P.**

1099 18th Street  
Denver, Colorado 80202



**CONSULTING, LLC**

**SHERIDAN OFFICE**  
1095 Saberton Avenue  
Sheridan, Wyoming 82801  
Phone 307-674-0609

**LOVELAND OFFICE**  
1635 Foxtail Drive, Suite 204  
Loveland, Colorado 80538  
Phone 970-776-4331

SCALE: 1" = 2,000ft

DRAWN: TL

REVISED: DP

NAD83 CO-Nft

DATE: 29 Sept 2015

DATE: 14 Oct 2016