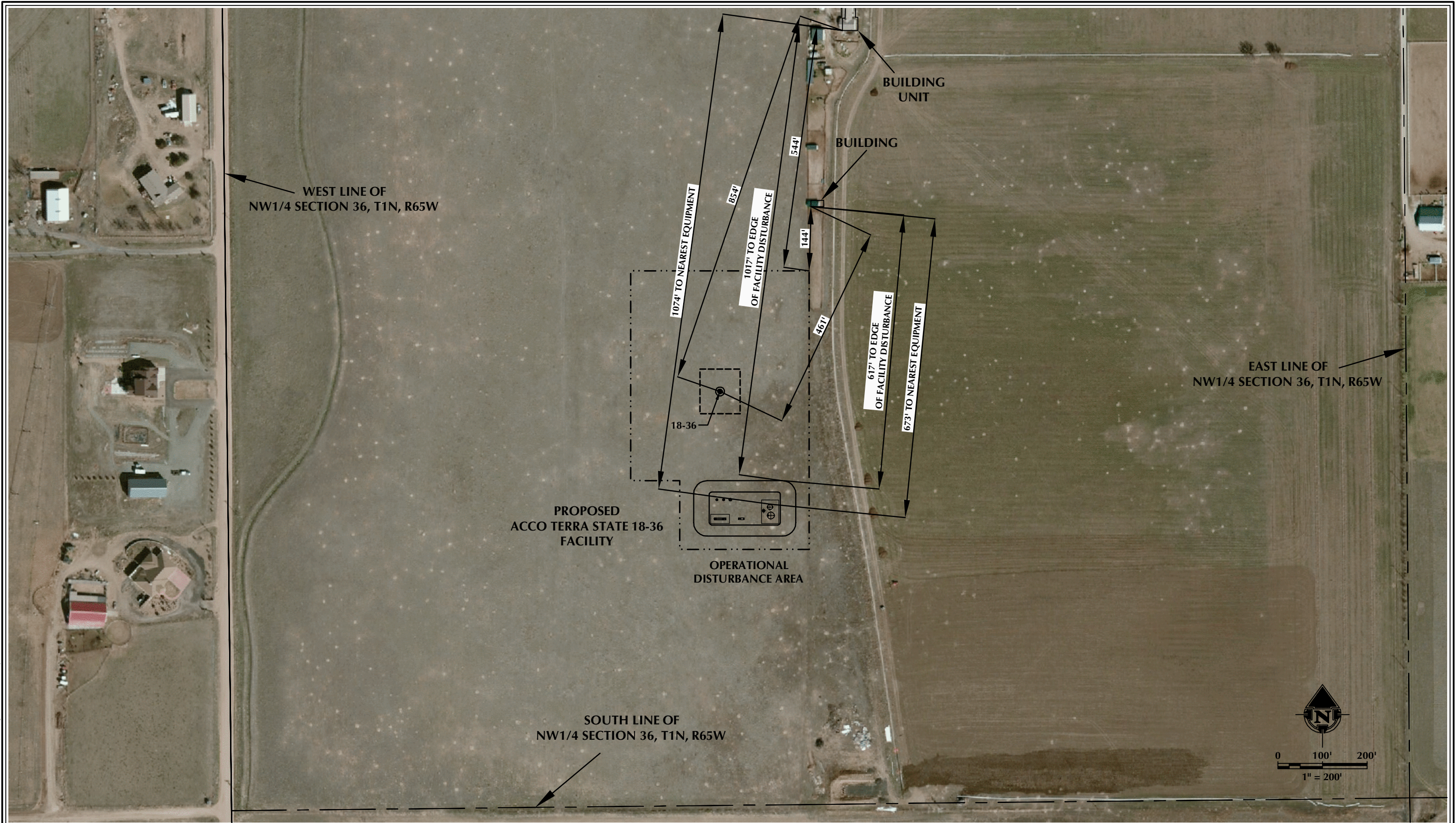


K:\ANADARKO\2016\2016_73_ACCO_TERRA_T1N_R65W_SEC_36.DWG\ACCO_TERRA.dwg, 10/11/2016 10:31:20 PM, jake



NOTES:

1. EQUIPMENT PLACEMENT IS APPROXIMATE AND SUBJECT TO MINOR MODIFICATION DUE TO SPECIFIC CIRCUMSTANCES.

DATA SOURCES:

- AERIAL COURTESY OF ESRI, INC.
- WATER WELLS COURTESY OF COLORADO DIVISION OF WATER RESOURCES



LOVELAND OFFICE
1635 Foxtrail Drive, Suite 204
Loveland, Colorado 80538
Phone 970-776-4331

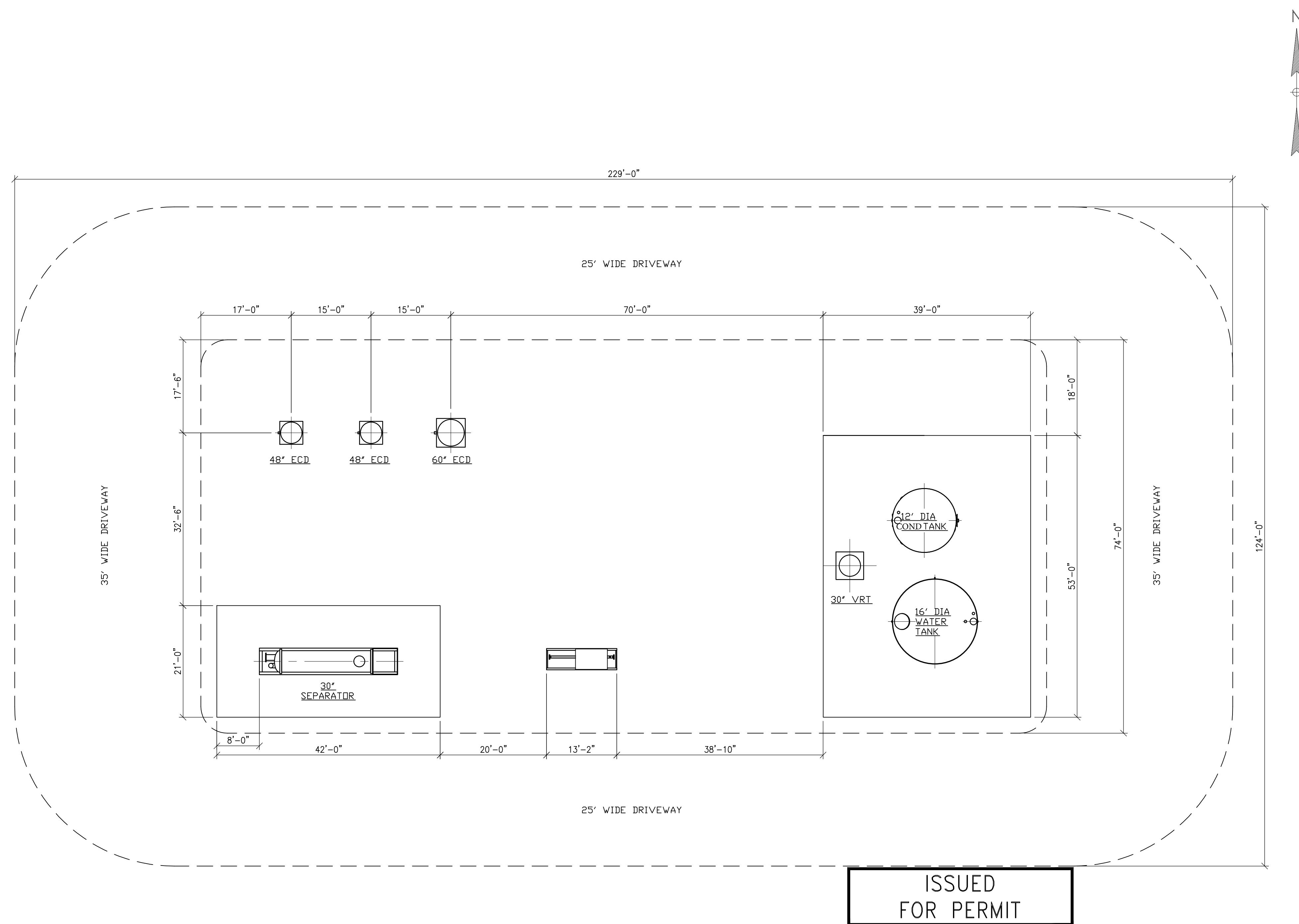
SHERIDAN OFFICE
1095 Saberton Avenue
Sheridan, Wyoming 82801
Phone 307-674-0609

Anadarko
Petroleum Corporation
1099 18th Street
Denver, CO 80202

SCALE: 1" = 200'
DATE SURVEYED: 9/15/16
DATE: 10/6/16
DRAFTER: CDJ
REVISED:

FACILITY LAYOUT AERIAL
ACCO TERRA STATE 18-36
LOCATED IN SECTION 36, T1N, R65W, 6TH P.M.
WELD COUNTY, COLORADO

THIS DRAWING AND THE DESIGN IT COVERS ARE CONFIDENTIAL AND REMAIN THE PROPERTY OF ANADARKO PETROLEUM CORPORATION AND SHALL NOT BE DISCLOSED TO OTHERS OR REPRODUCED IN ANY MANNER OR USED FOR ANY PURPOSE WHATSOEVER EXCEPT BY THE OWNER.



NOTES:

REFERENCE DRAWINGS		REVISIONS					
DWG. NO.	TITLE	NO.	ISSUED FOR PERMIT	BY	DATE	CHK.	DATE
				JTK	9/21/16		

**ACCO_TERRA STATE 41**

PERMIT PLOT PLAN
PRODUCTION FACILITIES
W/EQUIPMENT LOCATIONS

DRAWN BY: RWG	CREATION DATE: 7/15/16	—
APPROVED: JTK	APPR. DATE: 7/15/16	
SCALE: 1"=12'-0"	DWG. No.: ACCO-STOR-01-PP-2020 REV 0	SHEET No. — OF — 