

A S A P PERFORATORS

GREELEY COLORADO

SONIC CEMENT BOND

FILING NO.		COMPANY		LYCO ENERGY CORPORATION	
WELL		SILVA 23-6			
FIELD		WATTENBERG			
COUNTY		WELD		STATE CO.	
LOCATION		NE SW		OTHER SERVICE	
SEC 6		TWP 5N		RGE 64M	
PERMANENT DATUM		GROUND LEVEL		ELEV 4603	
LOG MEASURED FROM K.B.		10 FT. ABOVE PERMANENT DATUM		KB 4613	
DRILLING MEASURED FROM		KELLY BUSHING		DF GL 4603	
DATE	2-3-97				
RUN NO.	ONE				
TYPE LOG	GR CBL				
DEPTH DRILLER	7100				
DEPTH LOGGER	7046				
BOTTOM LOGGED INT.	7042				
TOP LOGGED INT.	3172				
TYPE FLUID IN HOLE	WATER				
DENSITY					
FLUID LEVEL	FULL				
MAX. HOLE TEMP.	247 F				
TRUCK NO.	1				
LOCATION	GREELEY				
RECORDED BY	G. ZACK				
WITNESSED BY	D. OLSEN				

BORE HOLE RECORD

CASING RECORD

RUN	BIT	FROM	TO	SIZE	WT.	FROM	TO
ONE	12 1/4	000	371	8 5/8	24	000	371
	7 7/8	371	7130	3 1/2	7.7	000	T.D.

COMPROBE 2 1/8 SINGLE RECIEVER BOND TOOL
4 WATTS OUTPUT AT 20 KILO HERTZ
3' SPACING

SERIAL NUMBER 21054

SCINTILLATION GAMMA RAY DETECTOR 1 FT.

THANK YOU FOR CALLING ASAP PERFORATORS
970-353-5118

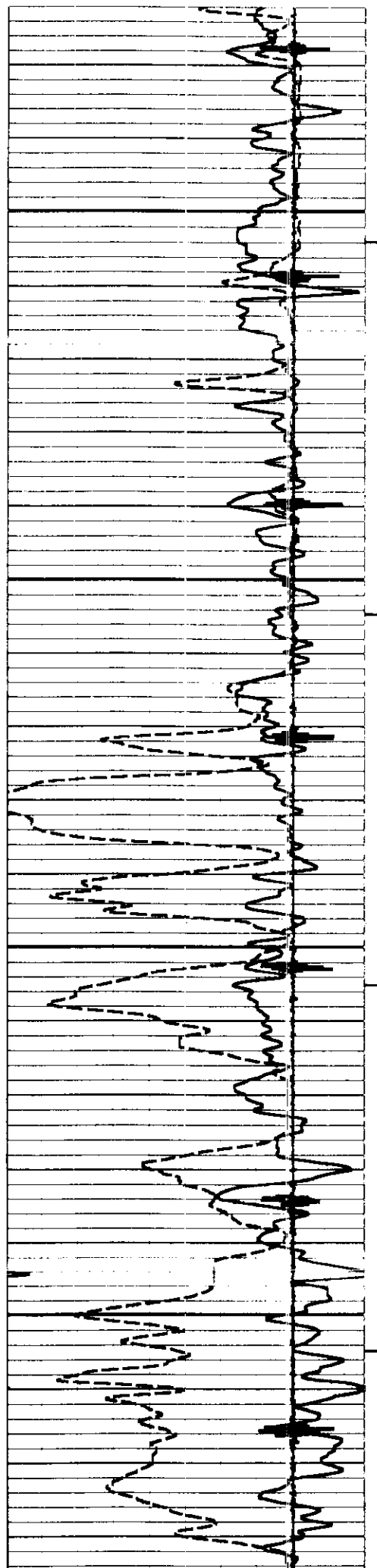
0 GAMMA RAY 200
200 API 400

400 FORMATION TIME 200
MICRO SECONDS

0 AMPLITUDE 100
MILLIVOLTS

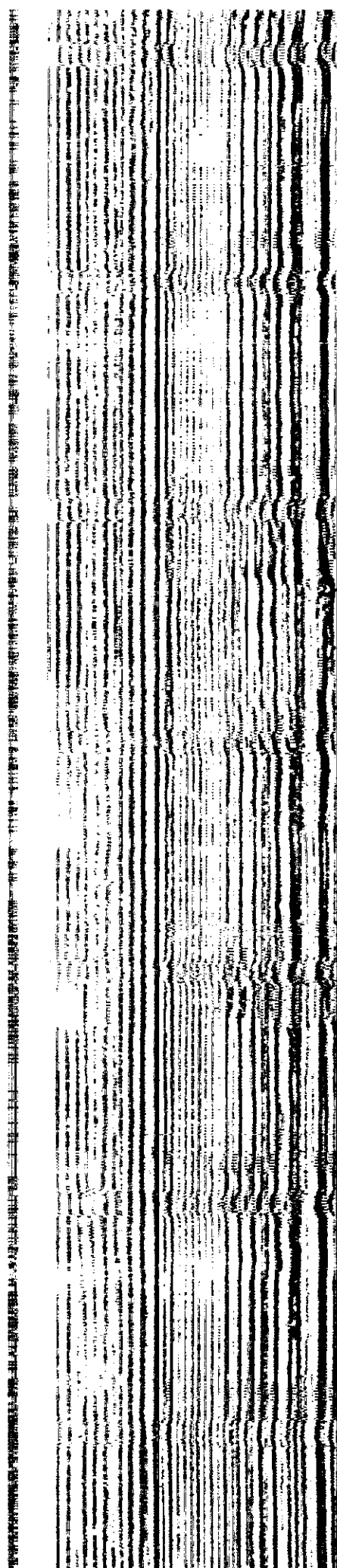
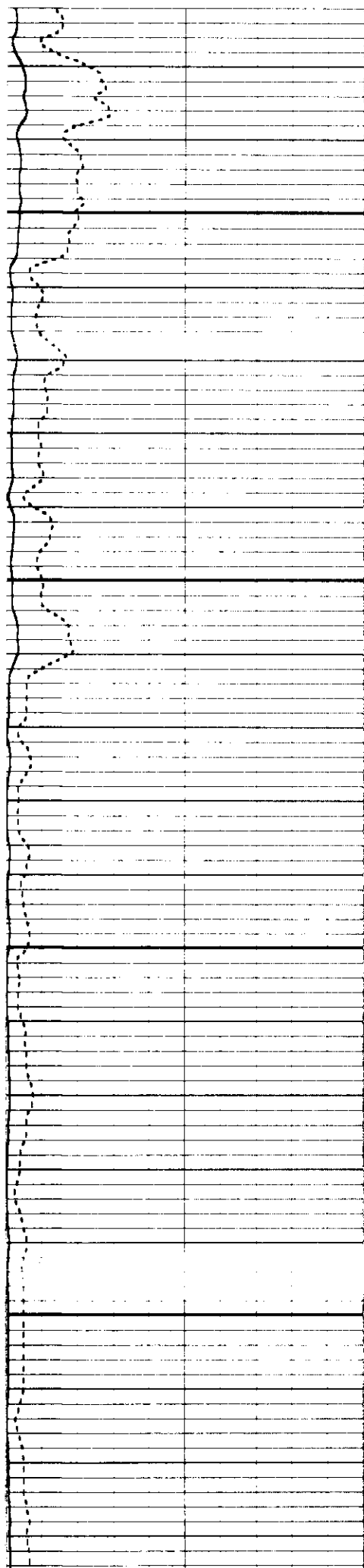
0 AMP X 5 20

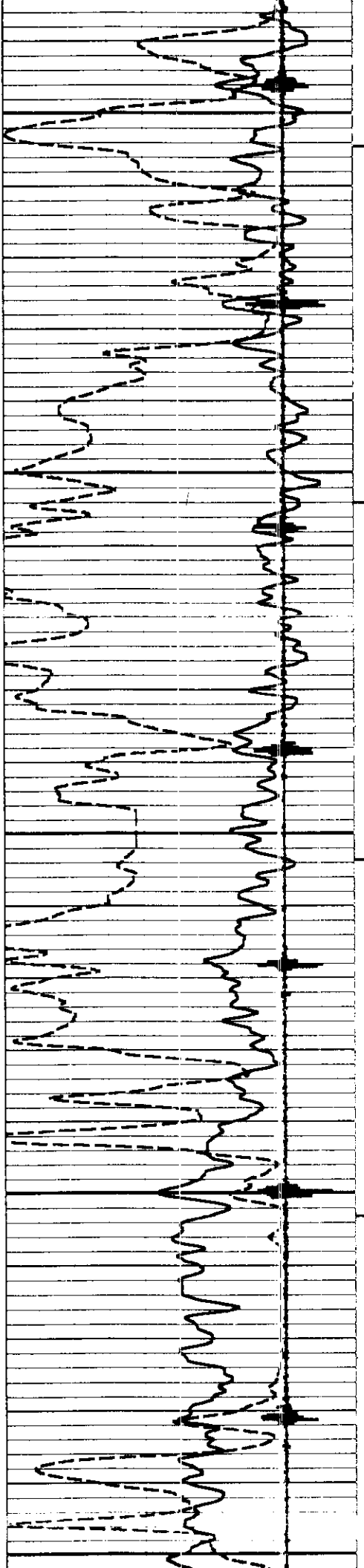
0 VARIABLE DENSITY 1000
MICRO SECONDS



03200

03300

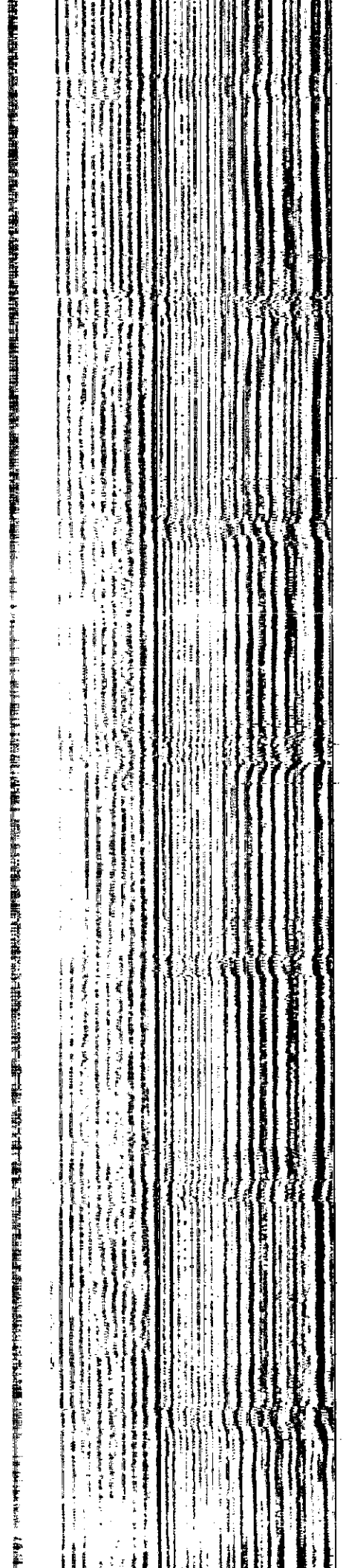
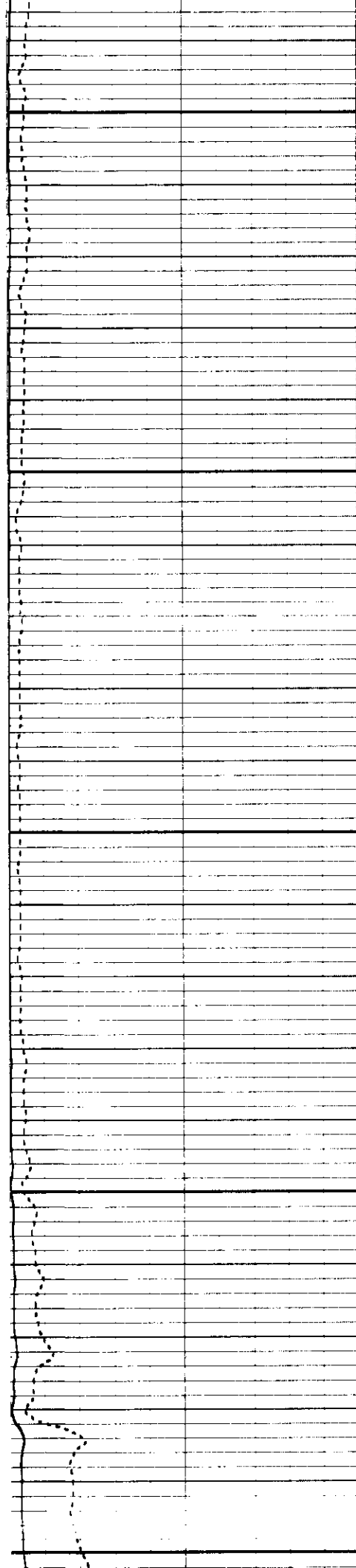


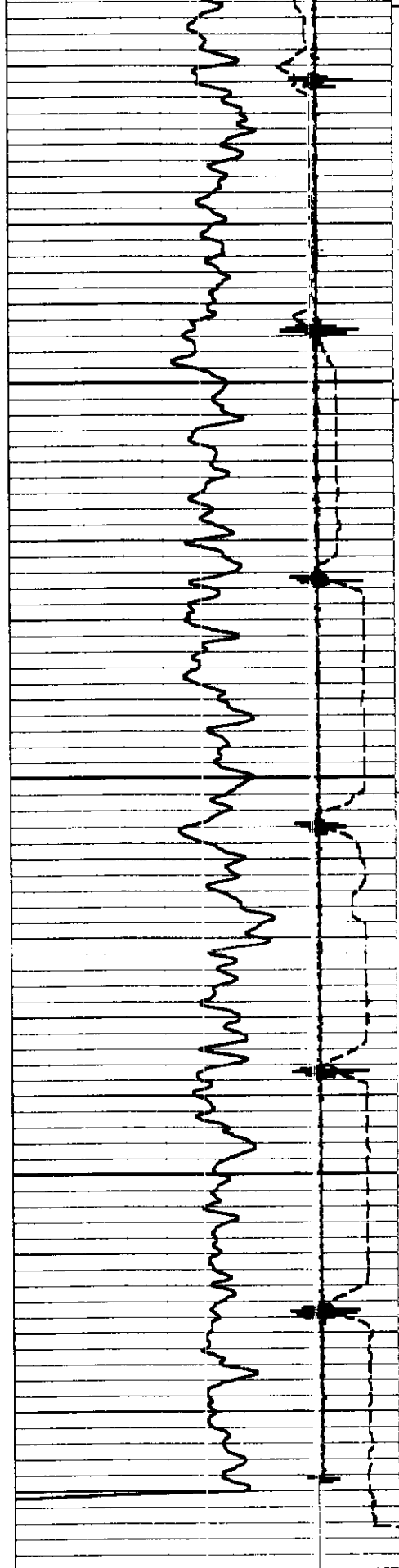


03400

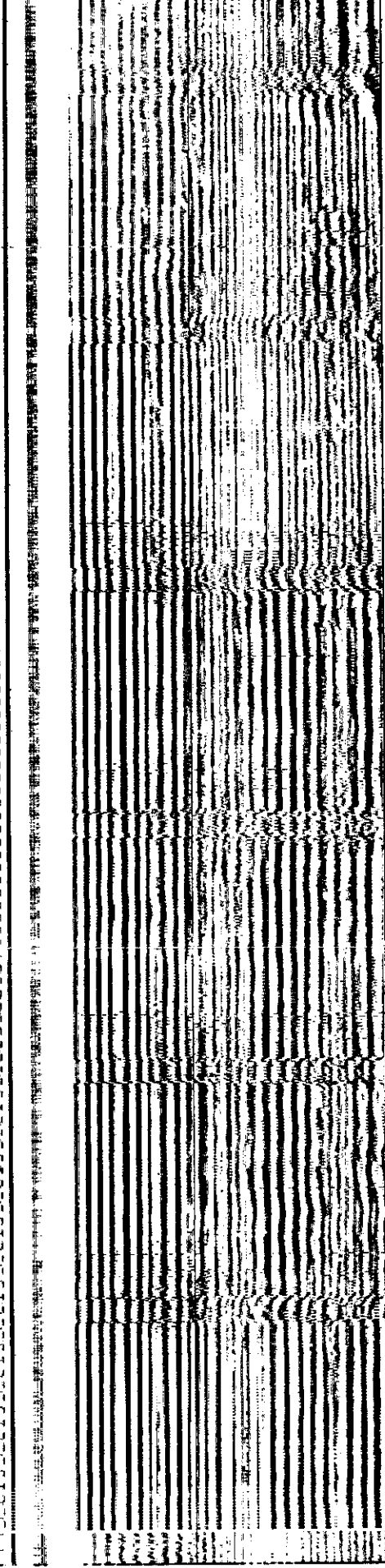
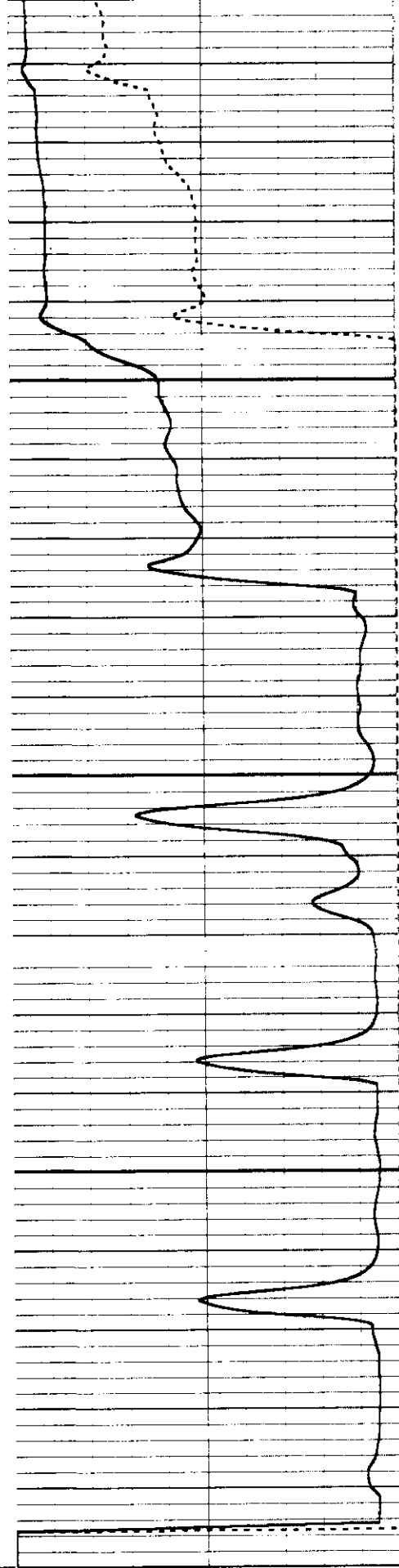
03500

03600





03700



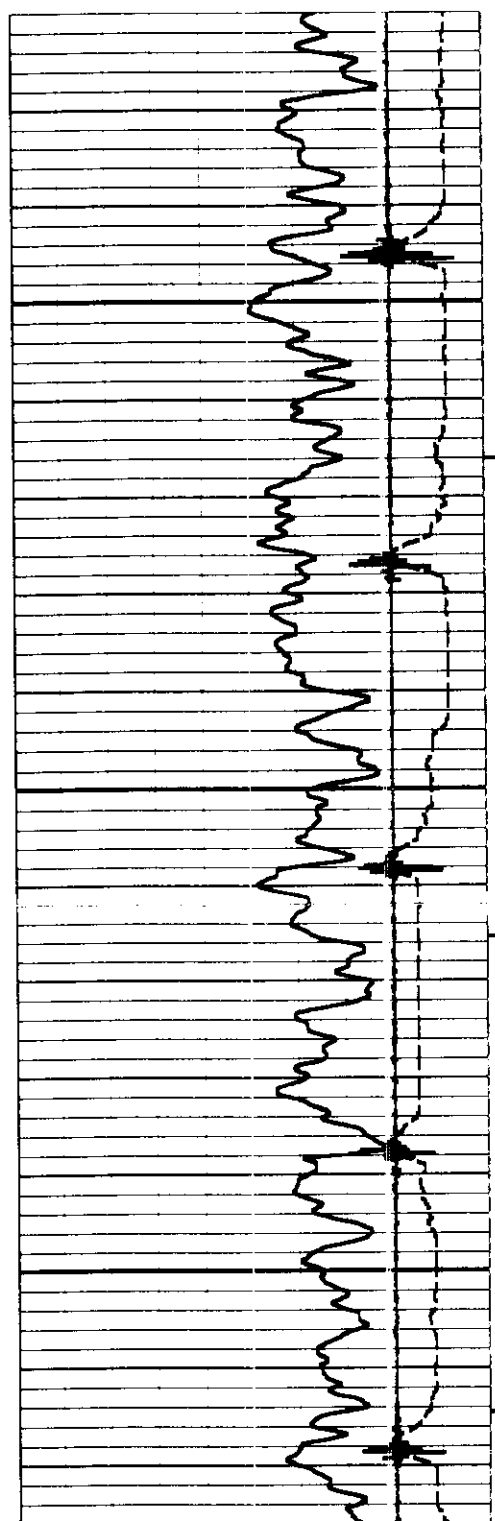
0	GAMMA RAY	200
200	API	400

0	AMPLITUDE	100
	MILLIVOLTS	

0	VARIABLE DENSITY	1000
	MICRO SECONDS	

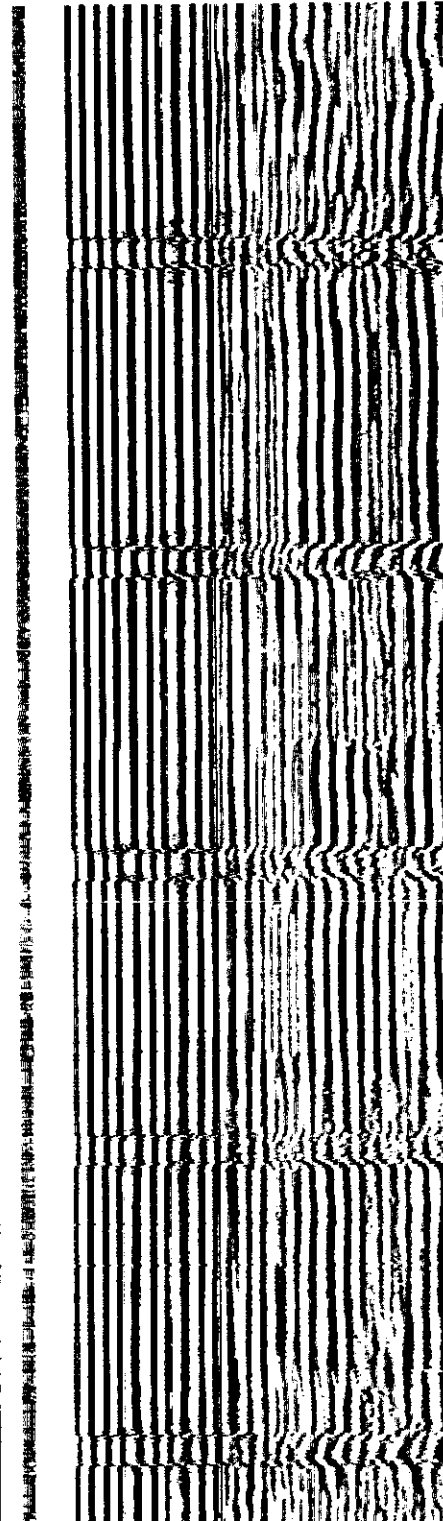
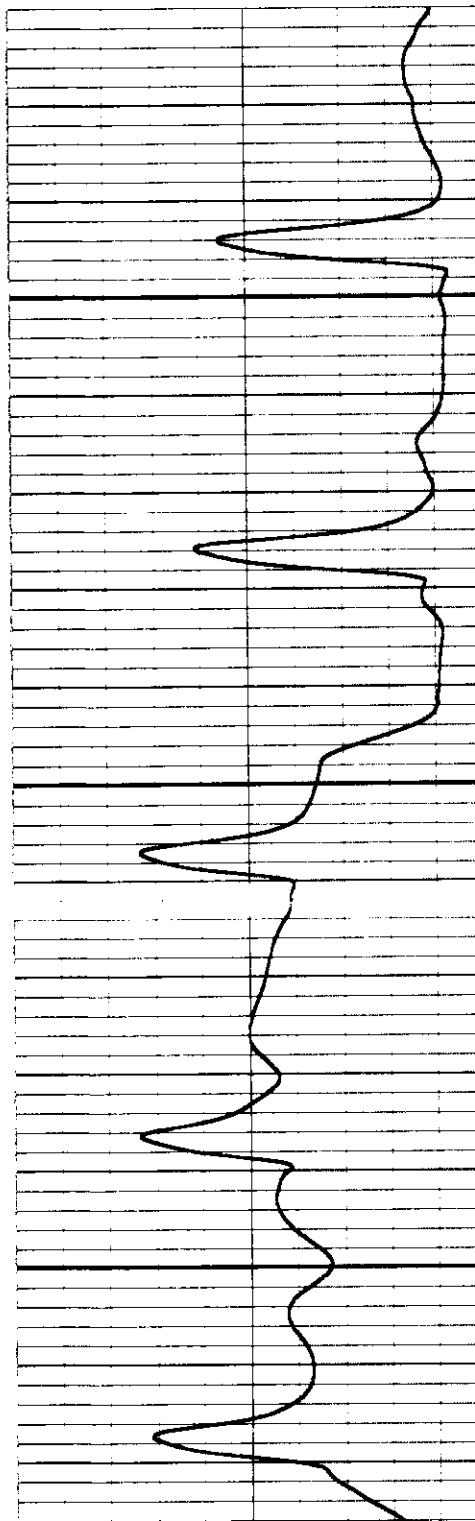
400 ----- FORMATION TIME MICRO SECONDS 200	0 ----- AMP X 5 20
CCL	

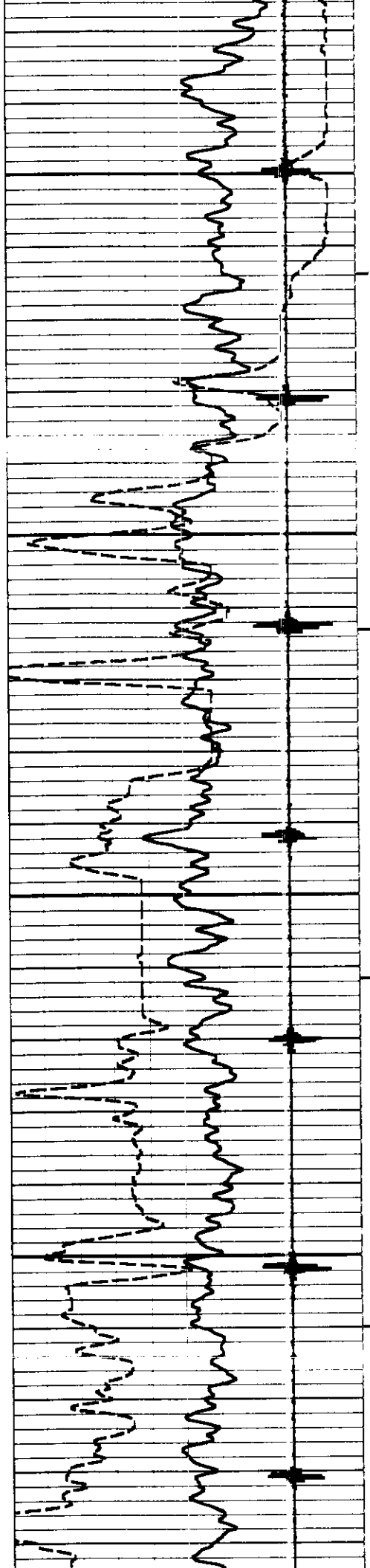
0 ----- GAMMA RAY API 200 400	0 ----- AMPLITUDE MILLIVOLTS 100	0 ----- VARIABLE DENSITY MICRO SECONDS 1000
400 ----- FORMATION TIME MICRO SECONDS 200	0 ----- AMP X 5 20	
CCL		



06000

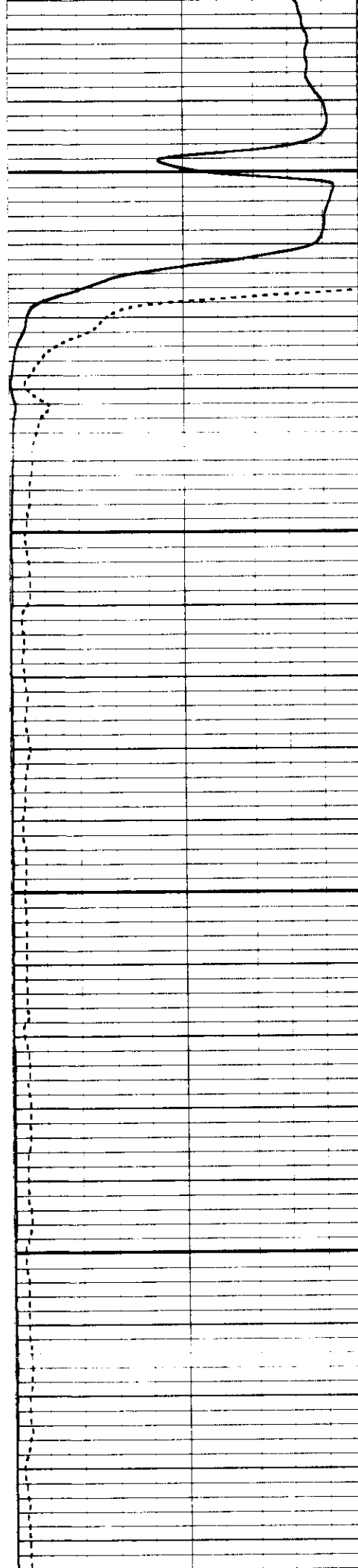
06100



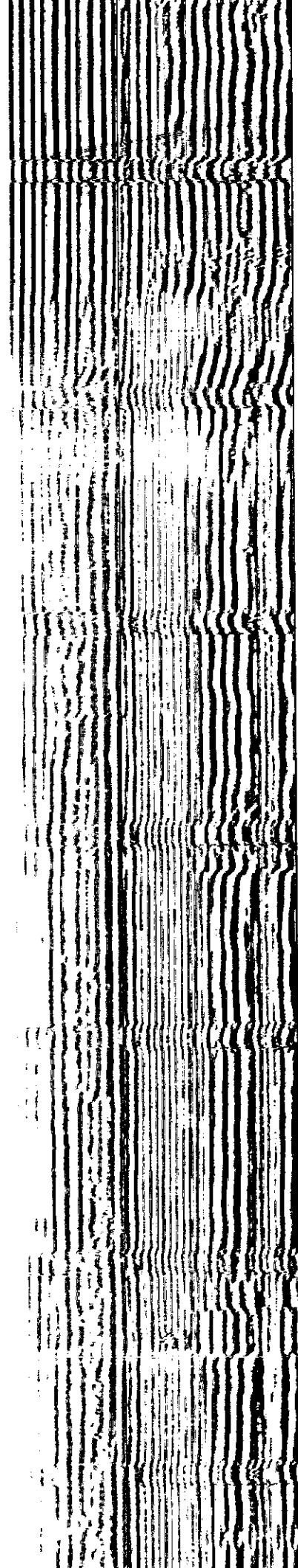


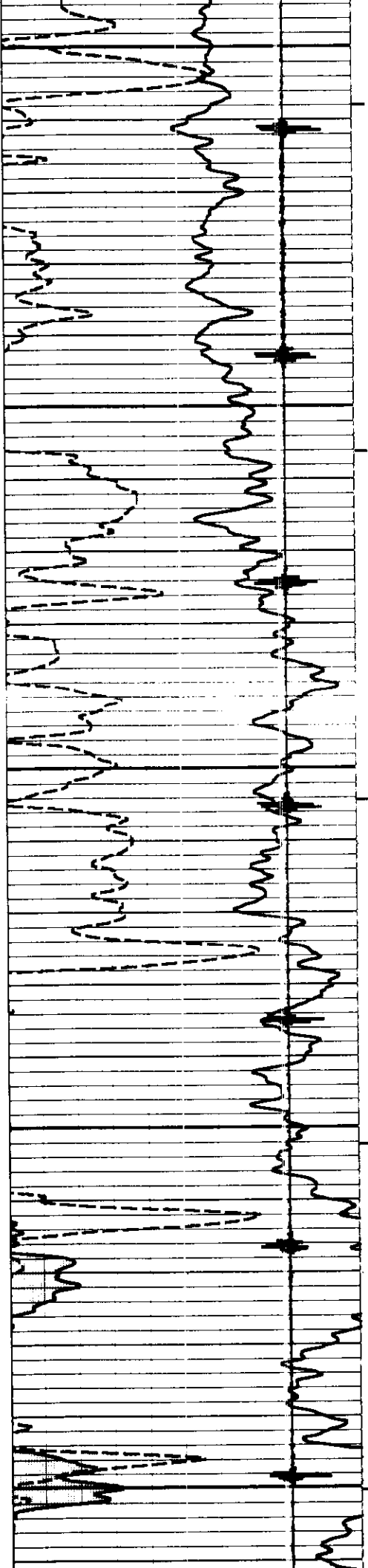
06200

06300



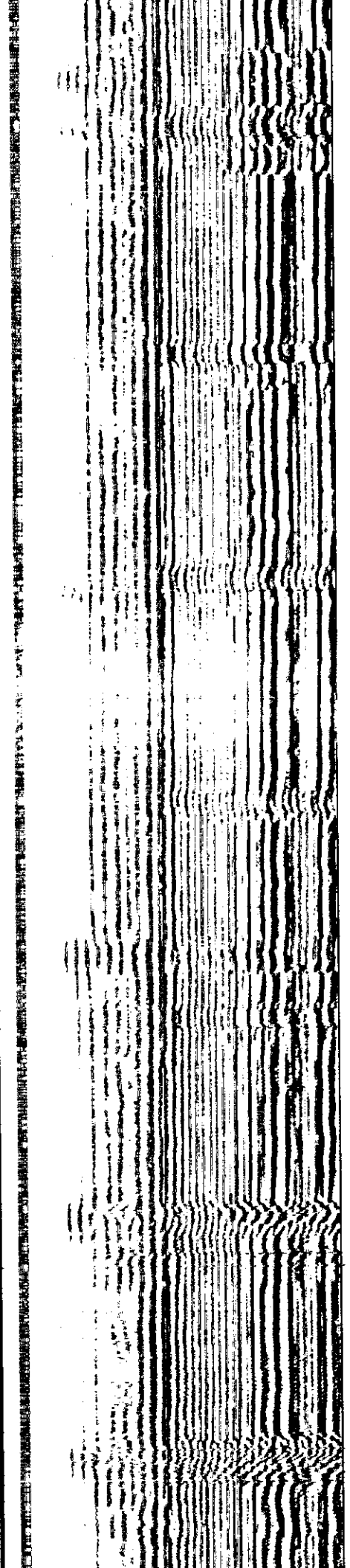
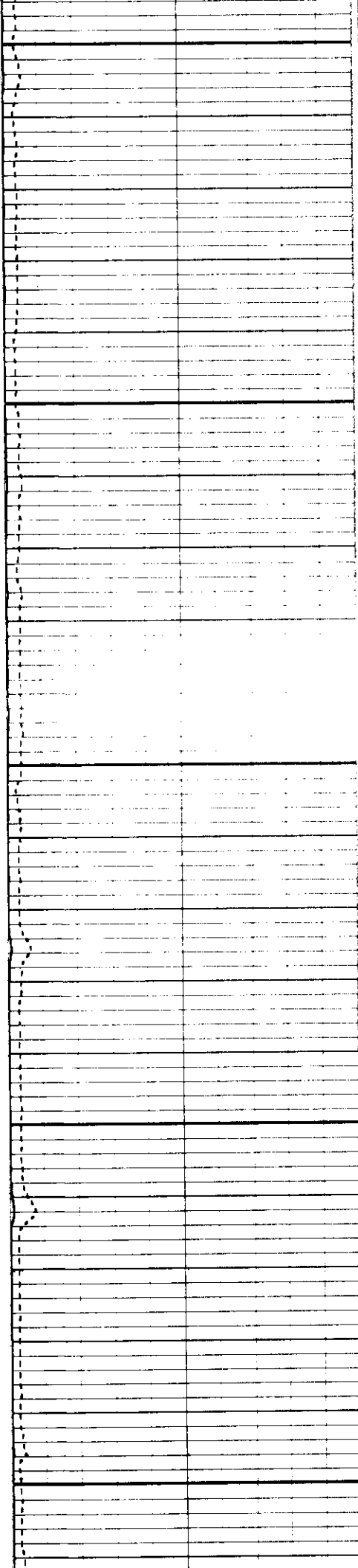
06400 06500 07000 07100 07200 07300 07400 07500 07600 07700 07800 07900 08000 08100 08200 08300 08400 08500 08600 08700 08800 08900 09000 09100 09200 09300 09400 09500 09600 09700 09800 09900 10000

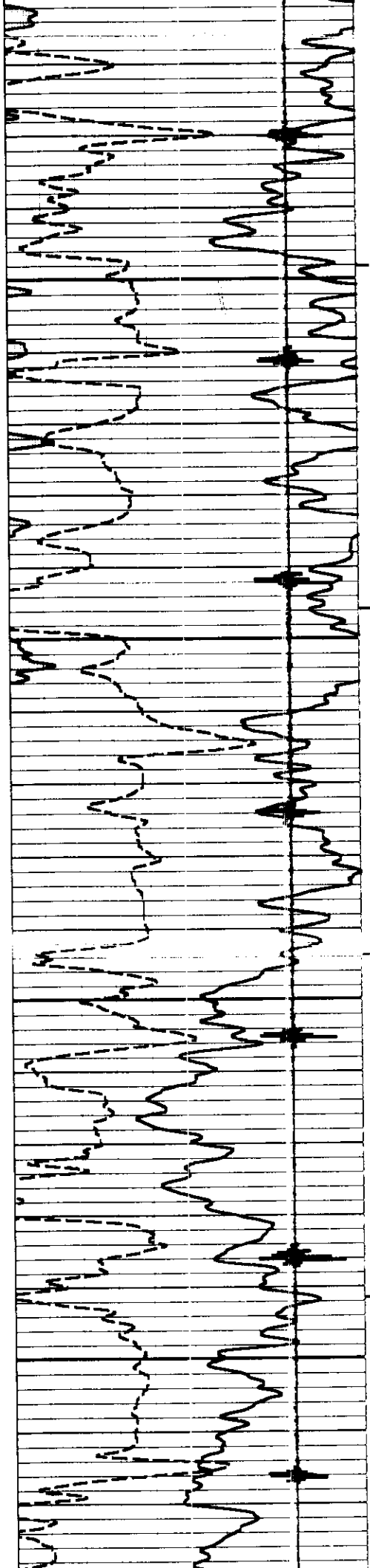




06400

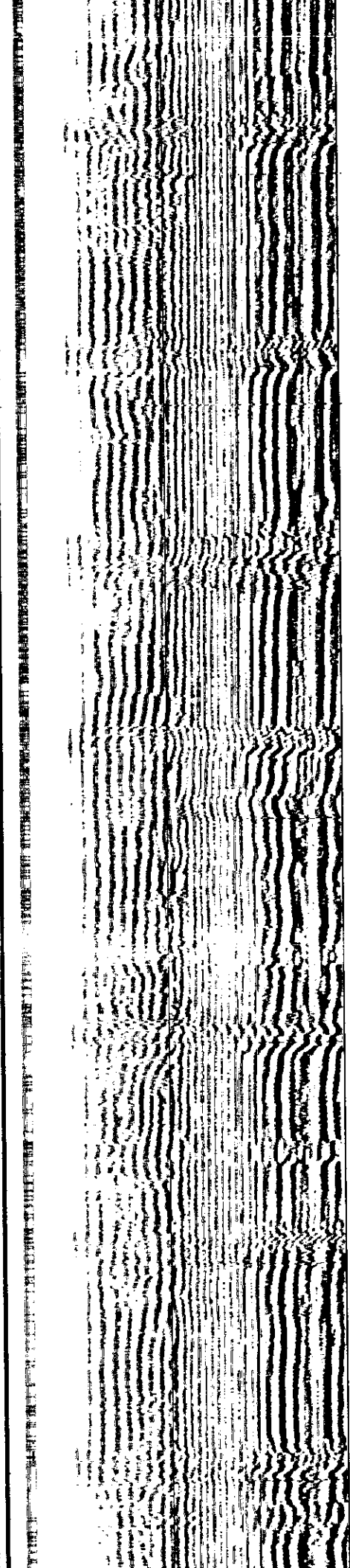
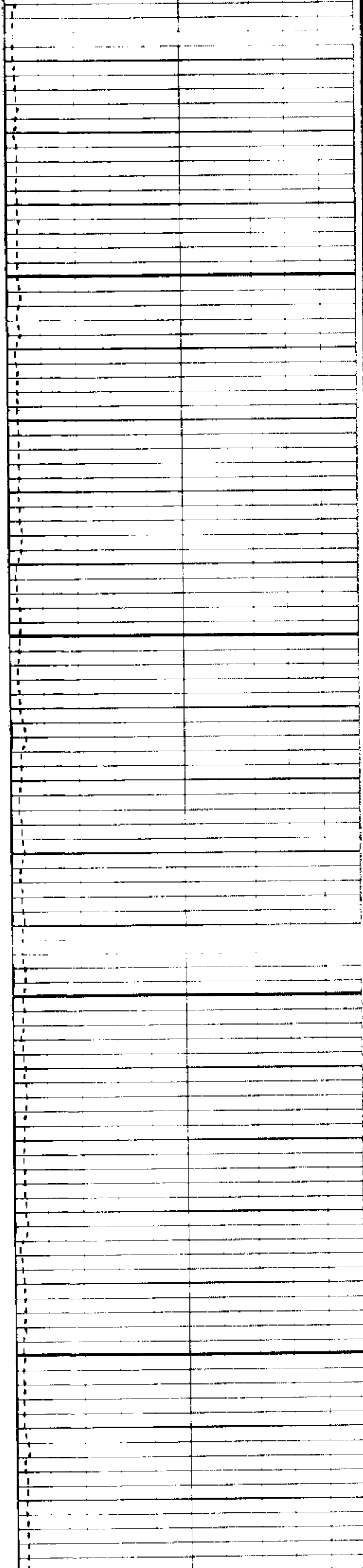
06500

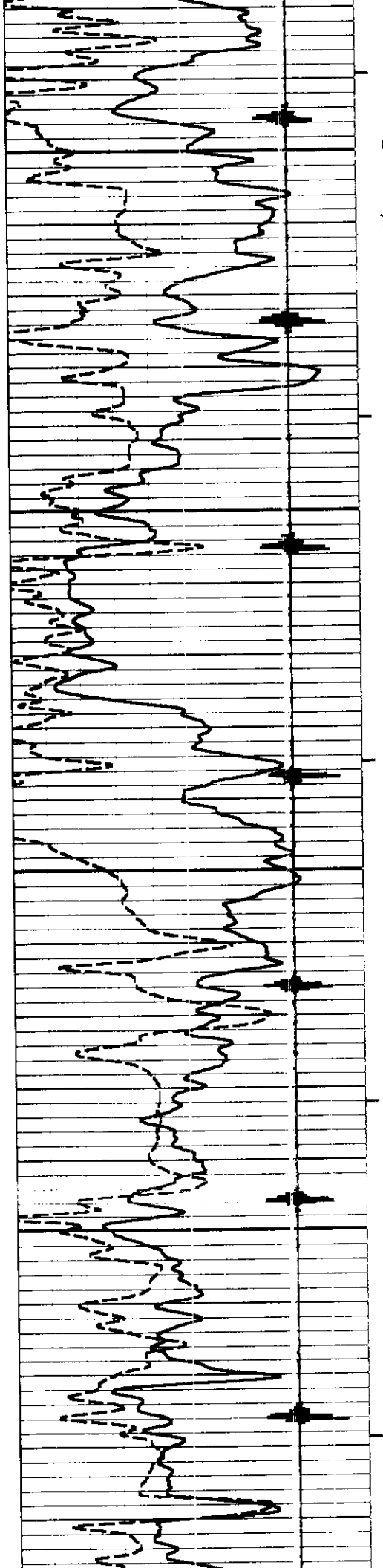




06600

06700

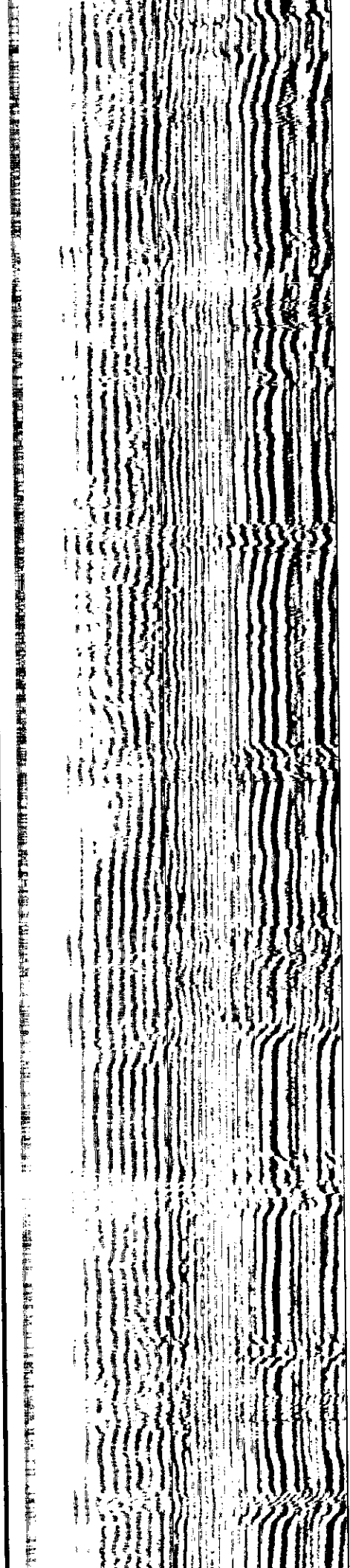
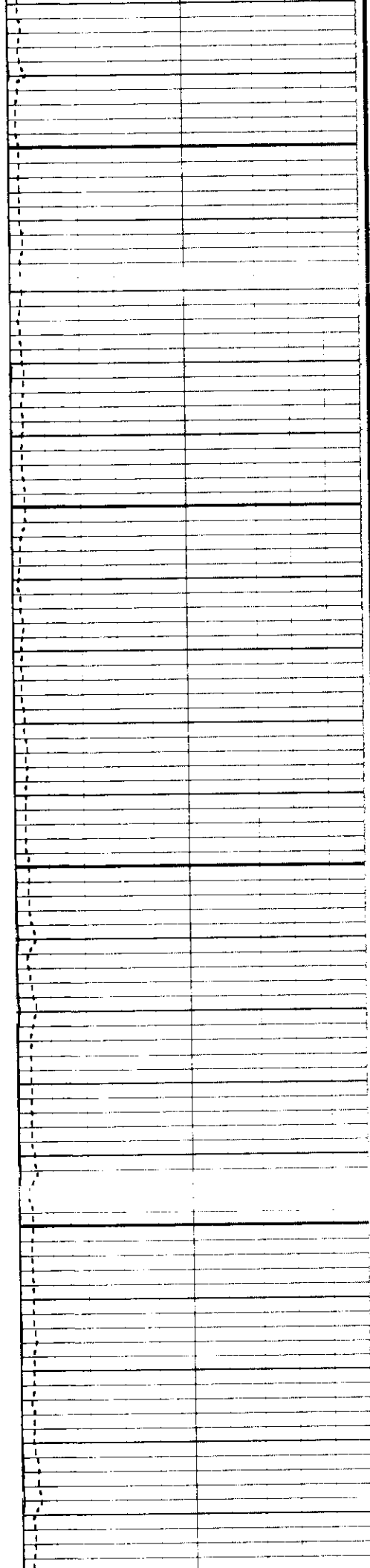


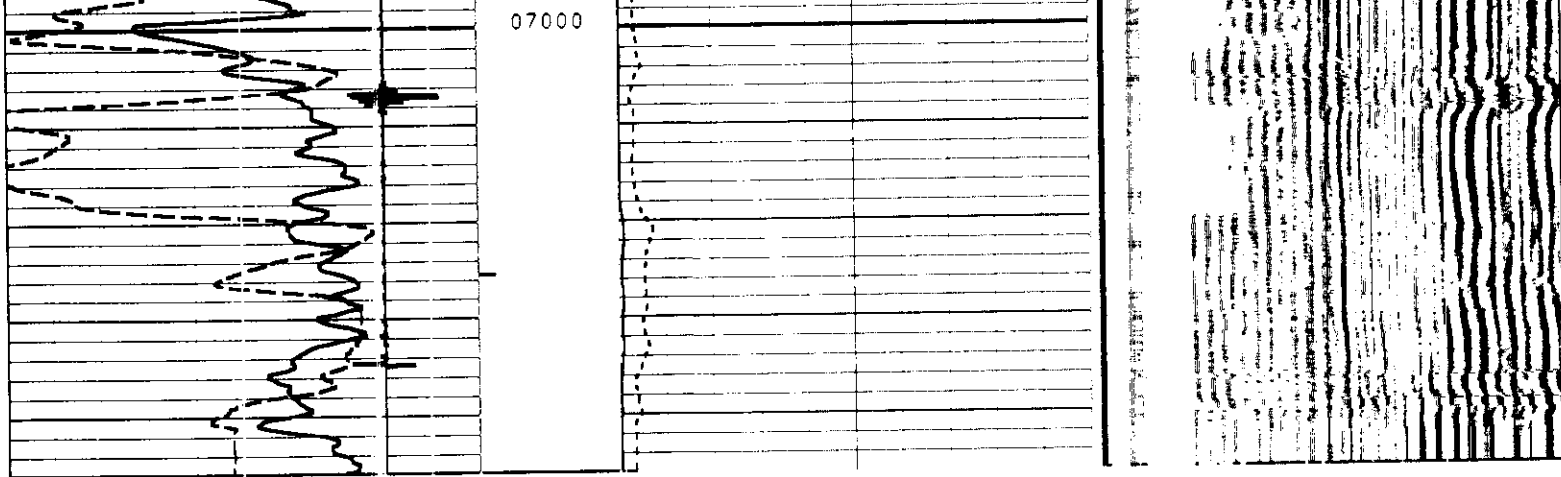


06800

x

06900





0	GAMMA RAY	200	0	AMPLITUDE	100	0	VARIABLE DENSITY	1000
200	API	400		MILLIVOLTS			MICRO SECONDS	
400	FORMATION TIME	200	0	API	100			
	MICRO SECONDS							
		CCL						

DRILLER T.D. 7100
 LOGGER T.D. 7046
 BOTTOM LOGGED
 INTERVAL 7042

COMPANY LYCO ENERGY CORPORATION
 WELL SILVA 23-6
 FIELD WATTENBERG
 LOCATION NE SW SEC.6 SN 64W
 COUNTY WELD
 STATE COLO

2-3-97

