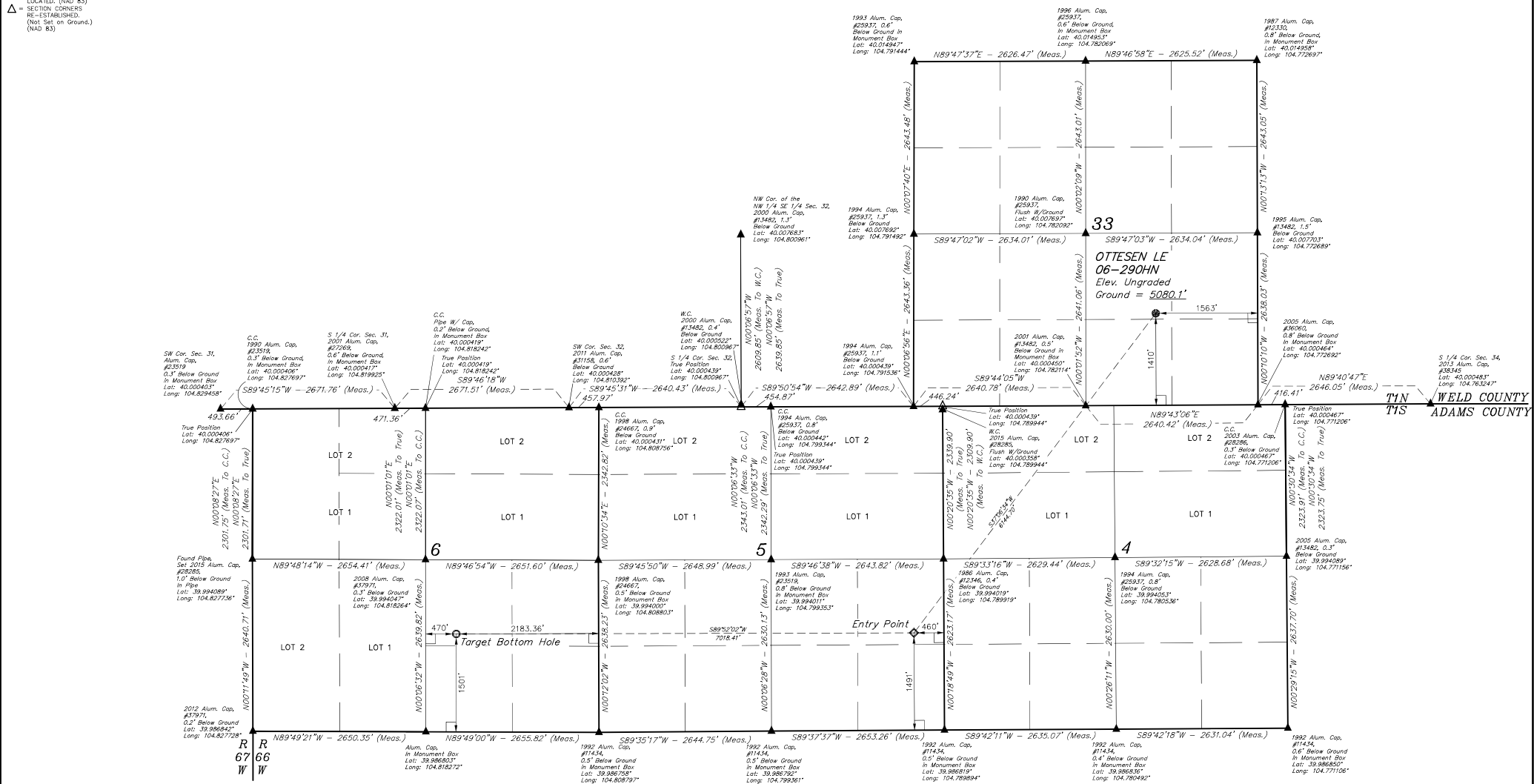


LEGEND:

- └ = 90° SYMBOL
- = PROPOSED WELLHEAD.
- = TARGET BOTTOM HOLE.
- ◆ = ENTRY POINT.
- ▲ = SECTION CORNERS LOCATED. (NAD 83)
- △ = SECTION CORNERS RE-ESTABLISHED. (Not Set on Ground.) (NAD 83)



NAD 83 (SURFACE LOCATION)	NAD 83 (ENTRY POINT)	NAD 83 (TARGET BOTTOM HOLE)
LATITUDE = 40°09'15.57" (40.004325)	LATITUDE = 39°59'27.26" (39.990906)	LATITUDE = 39°59'27.29" (39.990914)
LONGITUDE = 104°46'41.77" (104.778269)	LONGITUDE = 104°47'29.58" (104.791550)	LONGITUDE = 104°48'59.73" (104.816592)
NAD 27 (SURFACE LOCATION)	NAD 27 (ENTRY POINT)	NAD 27 (TARGET BOTTOM HOLE)
LATITUDE = 40°09'15.63" (40.004342)	LATITUDE = 39°59'27.32" (39.990922)	LATITUDE = 39°59'27.35" (39.990931)
LONGITUDE = 104°46'39.87" (104.777742)	LONGITUDE = 104°47'27.68" (104.791022)	LONGITUDE = 104°48'57.83" (104.816064)

BASIS OF BEARINGS
BASIS OF BEARINGS IS A G.P.S. OBSERVATION
BASIS OF ELEVATION
USGS COOPERATIVE BASE NETWORK CONTROL STATION,
DESIGNATION "JR 53 5026". NGS DATA SHEET LISTS THE NAVD 88
ELEVATION AS BEING 5028 FEET.

U.S. UTAH
NATIONAL UTILITY ASSOCIATION

UELS, LLC
Corporate Office • 85 South 200 East
Vernal, UT 84078 • (435) 789-1017

THIS IS TO CERTIFY THAT THE ABOVE DESCRIBED LAND AND INTEREST THEREIN ARE THE ACTUAL SURVEYS MADE BY ME OR UNDER MY CLOSE PERSONAL SUPERVISION AND THAT THE SAME ARE TRUE AND ACCURATE TO THE BEST OF MY KNOWLEDGE AND BELIEF.

RECORDED LAND SURVEYOR
 REGISTRATION NO. 28285
 STATE OF CALIFORNIA

2015-10-16

REV: 2 09-12-16 M.F.D. (NAME, EP & TBH CHANGE)

GREAT WESTERN OPERATING COMPANY
OTTESEN LE 06-290HN
NW 1/4 SE 1/4, SECTION 33, T1N, R66W, 6th P.M.
WELD COUNTY, COLORADO

SURVEYED BY: DALLAS NIELSEN, C.M.	DATE: 06-30-16
DRAWN BY: K.B.	DATE DRAWN: 11-11-15
SCALE: 1" = 1000'	

WELL LOCATION PLAT

