

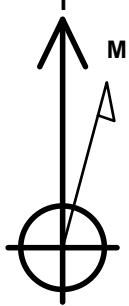
Bayswater Exploration & Production, LLC

Well Name: **Wilkinson J-12HN**

Surface Location: Wilkinson 1-P Pad Sec.1-T6N-R65W
 North American Datum 1983 , US State Plane 1983, Colorado Northern Zone
 Ground Elevation: 4774.0
 +N/-S +E/-W Northing Easting Latitude Longitude Slot
 0.0 0.0 1429422.10 3244938.85 40.508825 -104.619111
 RKB - 22' WELL @ 4796.0ft (RKB - 22')

WELLBORE TARGET DETAILS

Name	TVD	+N/-S	+E/-W	Shape
SHL 316'FSL, 435'FWL, SEC.1	1.0	0.0	0.0	Point
BHL 470'FSL, 2180'FWL, SEC.13	7036.0	-10489.0	1679.7	Point
LPL 100'FNL, 2180'FWL, SEC.12	7063.0	-460.1	1742.2	Point



Azimuths to True North
 Magnetic North: 8.07°

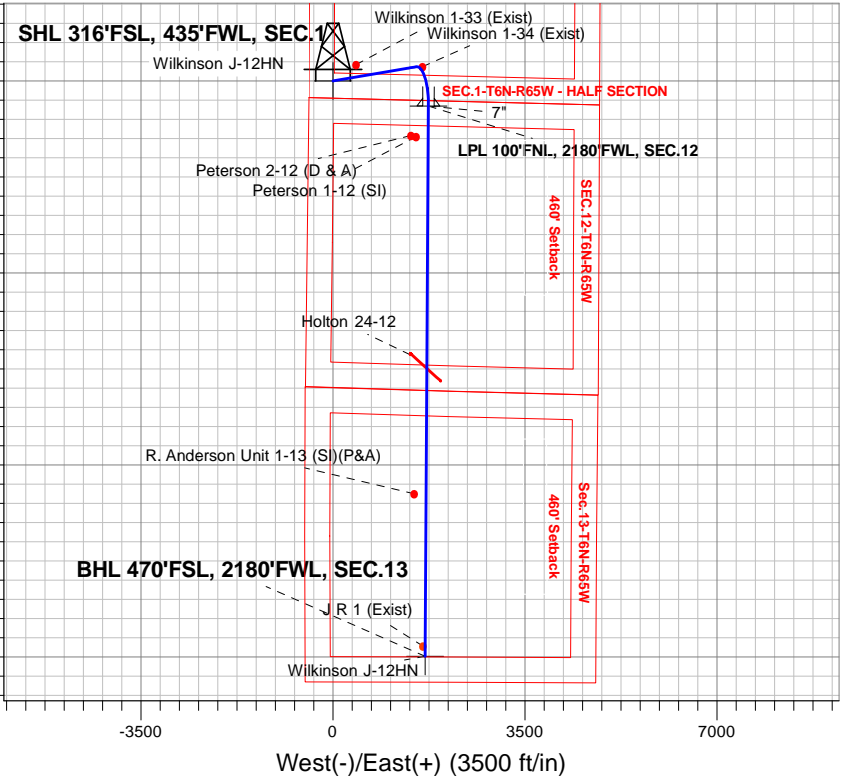
Magnetic Field
 Strength: 52640.4nT
 Dip Angle: 66.97°
 Date: 10/18/2016
 Model: IGRF2010

Wilkinson 1-P Pad Sec.1-T6N-R65W
 Wilkinson J-12HN
 Plan #2 (10-18-16)
 11:18, October 20 2016

ANNOTATIONS

TVD	MD	Annotation
600.0	600.0	KOP - Start Build 1.00
2335.0	2362.7	Start 4206.2 hold at 2362.7 MD
6343.7	6568.9	Start DLS 8.00 TFO 99.49
7063.0	7733.4	Start 10029.1 hold at 7733.4 MD
7036.0	17762.5	TD at 17762.5

South(-)/North(+) (3500 ft/in)

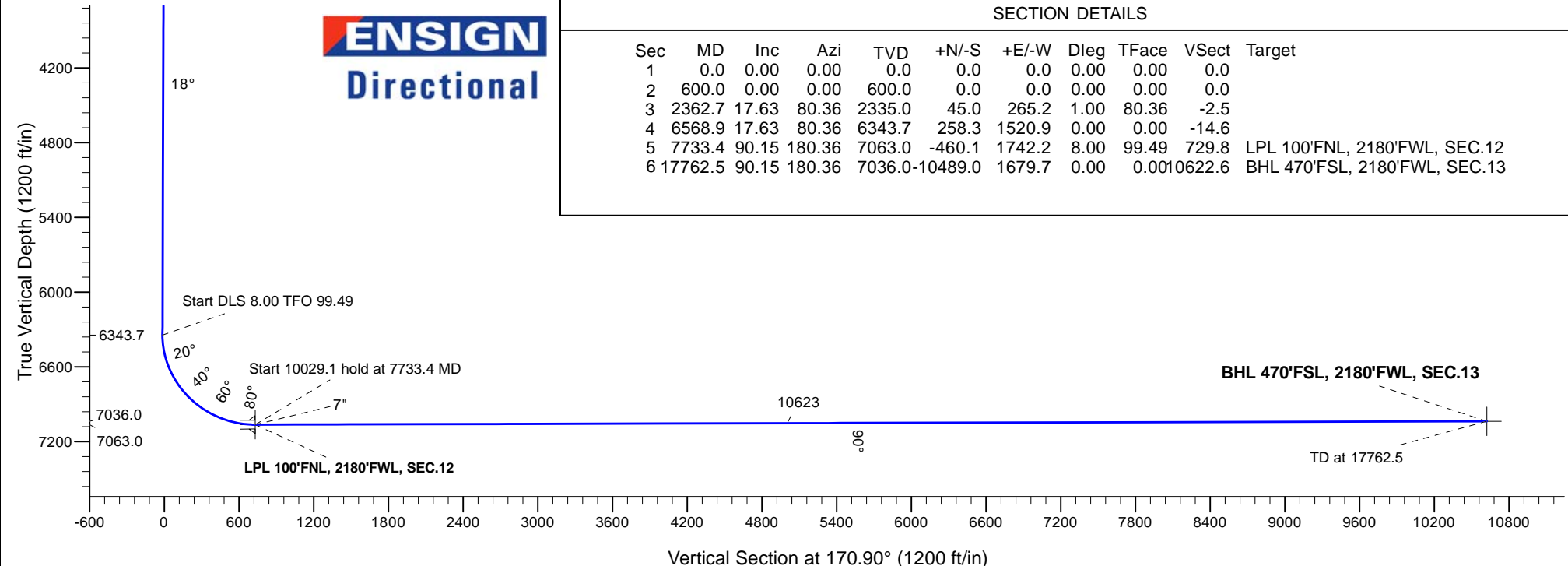


West(-)/East(+) (3500 ft/in)

ENSIGN
 Directional

SECTION DETAILS

Sec	MD	Inc	Azi	TVD	+N/-S	+E/-W	Dleg	TFace	VSect	Target
1	0.0	0.00	0.00	0.0	0.0	0.0	0.00	0.00	0.0	
2	600.0	0.00	0.00	600.0	0.0	0.0	0.00	0.00	0.0	
3	2362.7	17.63	80.36	2335.0	45.0	265.2	1.00	80.36	-2.5	
4	6568.9	17.63	80.36	6343.7	258.3	1520.9	0.00	0.00	-14.6	
5	7733.4	90.15	180.36	7063.0	-460.1	1742.2	8.00	99.49	729.8	LPL 100'FNL, 2180'FWL, SEC.12
6	17762.5	90.15	180.36	7036.0	-10489.0	1679.7	0.00	0.00	10622.6	BHL 470'FSL, 2180'FWL, SEC.13





Bayswater Exploration & Production, LLC

SEC.1-T6N-R65W

Wilkinson 1-P Pad Sec.1-T6N-R65W

Wilkinson J-12HN

Wellbore #1

Plan: Plan #2 (10-18-16)

Standard Planning Report

20 October, 2016



BAYSWATER
EXPLORATION & PRODUCTION, LLC

Database:	US_EDM	Local Co-ordinate Reference:	Well Wilkinson J-12HN
Company:	Bayswater Exploration & Production, LLC	TVD Reference:	WELL @ 4796.0ft (RKB - 22')
Project:	SEC.1-T6N-R65W	MD Reference:	WELL @ 4796.0ft (RKB - 22')
Site:	Wilkinson 1-P Pad Sec.1-T6N-R65W	North Reference:	True
Well:	Wilkinson J-12HN	Survey Calculation Method:	Minimum Curvature
Wellbore:	Wellbore #1		
Design:	Plan #2 (10-18-16)		

Project	SEC.1-T6N-R65W, Weld County, Colorado		
Map System:	US State Plane 1983	System Datum:	Mean Sea Level
Geo Datum:	North American Datum 1983		Using Well Reference Point
Map Zone:	Colorado Northern Zone		Using geodetic scale factor

Site		Wilkinson 1-P Pad Sec.1-T6N-R65W			
Site Position:		Northing:	1,429,424.05 usft	Latitude:	40.508834
From:	Lat/Long	Easting:	3,244,803.97 usft	Longitude:	-104.619596
Position Uncertainty:	0.0 ft	Slot Radius:	13-3/16 "	Grid Convergence:	0.57

Well	Wilkinson J-12HN					
Well Position	+N/-S	-3.3 ft	Northing:	1,429,422.10 usft	Latitude:	40.508825
	+E/-W	134.9 ft	Easting:	3,244,938.85 usft	Longitude:	-104.619111
Position Uncertainty		0.0 ft	Wellhead Elevation:		Ground Level:	4,774.0 ft

Wellbore	Wellbore #1				
Magnetics	Model Name	Sample Date	Declination (°)	Dip Angle (°)	Field Strength (nT)
	IGRF2010	10/18/2016	8.07	66.97	52,640

Design	Plan #2 (10-18-16)			
Audit Notes:				
Version:	Phase:	PROTOTYPE	Tie On Depth:	0.0
Vertical Section:	Depth From (TVD)	+N/-S (ft)	+E/-W (ft)	Direction (°)
	0.0	0.0	0.0	170.90

Plan Sections										
Measured Depth (ft)	Inclination (°)	Azimuth (°)	Vertical Depth (ft)	+N/-S (ft)	+E/-W (ft)	Dogleg Rate (°/100usft)	Build Rate (°/100usft)	Turn Rate (°/100usft)	TFO (°)	Target
0.0	0.00	0.00	0.0	0.0	0.0	0.00	0.00	0.00	0.00	
600.0	0.00	0.00	600.0	0.0	0.0	0.00	0.00	0.00	0.00	
2,362.7	17.63	80.36	2,335.0	45.0	265.2	1.00	1.00	0.00	80.36	
6,568.9	17.63	80.36	6,343.7	258.3	1,520.9	0.00	0.00	0.00	0.00	
7,733.4	90.15	180.36	7,063.0	-460.1	1,742.2	8.00	6.23	8.59	99.49	LPL 100'FNL, 2180'F
17,762.5	90.15	180.36	7,036.0	-10,489.0	1,679.7	0.00	0.00	0.00	0.00	BHL 470'FSL, 2180'F

Database:	US_EDM	Local Co-ordinate Reference:	Well Wilkinson J-12HN
Company:	Bayswater Exploration & Production, LLC	TVD Reference:	WELL @ 4796.0ft (RKB - 22')
Project:	SEC.1-T6N-R65W	MD Reference:	WELL @ 4796.0ft (RKB - 22')
Site:	Wilkinson 1-P Pad Sec.1-T6N-R65W	North Reference:	True
Well:	Wilkinson J-12HN	Survey Calculation Method:	Minimum Curvature
Wellbore:	Wellbore #1		
Design:	Plan #2 (10-18-16)		

Planned Survey									
Measured Depth (ft)	Inclination (°)	Azimuth (°)	Vertical Depth (ft)	+N/-S (ft)	+E/-W (ft)	Vertical Section (ft)	Dogleg Rate (°/100usft)	Build Rate (°/100usft)	Turn Rate (°/100usft)
0.0	0.00	0.00	0.0	0.0	0.0	0.0	0.00	0.00	0.00
100.0	0.00	0.00	100.0	0.0	0.0	0.0	0.00	0.00	0.00
200.0	0.00	0.00	200.0	0.0	0.0	0.0	0.00	0.00	0.00
300.0	0.00	0.00	300.0	0.0	0.0	0.0	0.00	0.00	0.00
400.0	0.00	0.00	400.0	0.0	0.0	0.0	0.00	0.00	0.00
500.0	0.00	0.00	500.0	0.0	0.0	0.0	0.00	0.00	0.00
600.0	0.00	0.00	600.0	0.0	0.0	0.0	0.00	0.00	0.00
KOP - Start Build 1.00									
700.0	1.00	80.36	700.0	0.1	0.9	0.0	1.00	1.00	0.00
800.0	2.00	80.36	800.0	0.6	3.4	0.0	1.00	1.00	0.00
900.0	3.00	80.36	899.9	1.3	7.7	-0.1	1.00	1.00	0.00
1,000.0	4.00	80.36	999.7	2.3	13.8	-0.1	1.00	1.00	0.00
1,100.0	5.00	80.36	1,099.4	3.7	21.5	-0.2	1.00	1.00	0.00
1,200.0	6.00	80.36	1,198.9	5.3	30.9	-0.3	1.00	1.00	0.00
1,300.0	7.00	80.36	1,298.3	7.2	42.1	-0.4	1.00	1.00	0.00
1,400.0	8.00	80.36	1,397.4	9.3	55.0	-0.5	1.00	1.00	0.00
1,500.0	9.00	80.36	1,496.3	11.8	69.5	-0.7	1.00	1.00	0.00
1,600.0	10.00	80.36	1,594.9	14.6	85.8	-0.8	1.00	1.00	0.00
1,700.0	11.00	80.36	1,693.3	17.6	103.8	-1.0	1.00	1.00	0.00
1,800.0	12.00	80.36	1,791.2	21.0	123.4	-1.2	1.00	1.00	0.00
1,900.0	13.00	80.36	1,888.9	24.6	144.8	-1.4	1.00	1.00	0.00
2,000.0	14.00	80.36	1,986.1	28.5	167.8	-1.6	1.00	1.00	0.00
2,100.0	15.00	80.36	2,082.9	32.7	192.5	-1.8	1.00	1.00	0.00
2,200.0	16.00	80.36	2,179.3	37.2	218.8	-2.1	1.00	1.00	0.00
2,300.0	17.00	80.36	2,275.2	41.9	246.8	-2.4	1.00	1.00	0.00
2,362.7	17.63	80.36	2,335.0	45.0	265.2	-2.5	1.00	1.00	0.00
Start 4206.2 hold at 2362.7 MD									
2,400.0	17.63	80.36	2,370.6	46.9	276.4	-2.7	0.00	0.00	0.00
2,500.0	17.63	80.36	2,465.9	52.0	306.2	-2.9	0.00	0.00	0.00
2,600.0	17.63	80.36	2,561.2	57.1	336.1	-3.2	0.00	0.00	0.00
2,700.0	17.63	80.36	2,656.5	62.2	365.9	-3.5	0.00	0.00	0.00
2,800.0	17.63	80.36	2,751.8	67.2	395.8	-3.8	0.00	0.00	0.00
2,900.0	17.63	80.36	2,847.1	72.3	425.6	-4.1	0.00	0.00	0.00
3,000.0	17.63	80.36	2,942.4	77.4	455.5	-4.4	0.00	0.00	0.00
3,100.0	17.63	80.36	3,037.7	82.4	485.3	-4.7	0.00	0.00	0.00
3,200.0	17.63	80.36	3,133.0	87.5	515.2	-4.9	0.00	0.00	0.00
3,300.0	17.63	80.36	3,228.3	92.6	545.0	-5.2	0.00	0.00	0.00
3,400.0	17.63	80.36	3,323.6	97.6	574.9	-5.5	0.00	0.00	0.00
3,500.0	17.63	80.36	3,418.9	102.7	604.7	-5.8	0.00	0.00	0.00
3,600.0	17.63	80.36	3,514.2	107.8	634.6	-6.1	0.00	0.00	0.00
3,700.0	17.63	80.36	3,609.5	112.9	664.5	-6.4	0.00	0.00	0.00
3,800.0	17.63	80.36	3,704.8	117.9	694.3	-6.7	0.00	0.00	0.00
3,900.0	17.63	80.36	3,800.1	123.0	724.2	-6.9	0.00	0.00	0.00
4,000.0	17.63	80.36	3,895.5	128.1	754.0	-7.2	0.00	0.00	0.00
4,100.0	17.63	80.36	3,990.8	133.1	783.9	-7.5	0.00	0.00	0.00
4,200.0	17.63	80.36	4,086.1	138.2	813.7	-7.8	0.00	0.00	0.00
4,300.0	17.63	80.36	4,181.4	143.3	843.6	-8.1	0.00	0.00	0.00
4,400.0	17.63	80.36	4,276.7	148.4	873.4	-8.4	0.00	0.00	0.00
4,500.0	17.63	80.36	4,372.0	153.4	903.3	-8.7	0.00	0.00	0.00
4,600.0	17.63	80.36	4,467.3	158.5	933.1	-9.0	0.00	0.00	0.00
4,700.0	17.63	80.36	4,562.6	163.6	963.0	-9.2	0.00	0.00	0.00
4,800.0	17.63	80.36	4,657.9	168.6	992.8	-9.5	0.00	0.00	0.00
4,900.0	17.63	80.36	4,753.2	173.7	1,022.7	-9.8	0.00	0.00	0.00
5,000.0	17.63	80.36	4,848.5	178.8	1,052.5	-10.1	0.00	0.00	0.00

Database:	US_EDM	Local Co-ordinate Reference:	Well Wilkinson J-12HN
Company:	Bayswater Exploration & Production, LLC	TVD Reference:	WELL @ 4796.0ft (RKB - 22')
Project:	SEC.1-T6N-R65W	MD Reference:	WELL @ 4796.0ft (RKB - 22')
Site:	Wilkinson 1-P Pad Sec.1-T6N-R65W	North Reference:	True
Well:	Wilkinson J-12HN	Survey Calculation Method:	Minimum Curvature
Wellbore:	Wellbore #1		
Design:	Plan #2 (10-18-16)		

Planned Survey									
Measured Depth (ft)	Inclination (°)	Azimuth (°)	Vertical Depth (ft)	+N/-S (ft)	+E/-W (ft)	Vertical Section (ft)	Dogleg Rate (°/100usft)	Build Rate (°/100usft)	Turn Rate (°/100usft)
5,100.0	17.63	80.36	4,943.8	183.9	1,082.4	-10.4	0.00	0.00	0.00
5,200.0	17.63	80.36	5,039.1	188.9	1,112.3	-10.7	0.00	0.00	0.00
5,300.0	17.63	80.36	5,134.4	194.0	1,142.1	-11.0	0.00	0.00	0.00
5,400.0	17.63	80.36	5,229.7	199.1	1,172.0	-11.2	0.00	0.00	0.00
5,500.0	17.63	80.36	5,325.0	204.1	1,201.8	-11.5	0.00	0.00	0.00
5,600.0	17.63	80.36	5,420.3	209.2	1,231.7	-11.8	0.00	0.00	0.00
5,700.0	17.63	80.36	5,515.6	214.3	1,261.5	-12.1	0.00	0.00	0.00
5,800.0	17.63	80.36	5,610.9	219.3	1,291.4	-12.4	0.00	0.00	0.00
5,900.0	17.63	80.36	5,706.2	224.4	1,321.2	-12.7	0.00	0.00	0.00
6,000.0	17.63	80.36	5,801.6	229.5	1,351.1	-13.0	0.00	0.00	0.00
6,100.0	17.63	80.36	5,896.9	234.6	1,380.9	-13.2	0.00	0.00	0.00
6,200.0	17.63	80.36	5,992.2	239.6	1,410.8	-13.5	0.00	0.00	0.00
6,300.0	17.63	80.36	6,087.5	244.7	1,440.6	-13.8	0.00	0.00	0.00
6,400.0	17.63	80.36	6,182.8	249.8	1,470.5	-14.1	0.00	0.00	0.00
6,500.0	17.63	80.36	6,278.1	254.8	1,500.4	-14.4	0.00	0.00	0.00
6,568.9	17.63	80.36	6,343.7	258.3	1,520.9	-14.6	0.00	0.00	0.00
Start DLS 8.00 TFO 99.49									
6,600.0	17.38	88.60	6,373.4	259.2	1,530.2	-14.0	8.00	-0.78	26.49
6,700.0	18.88	114.07	6,468.6	253.0	1,560.0	-3.1	8.00	1.49	25.47
6,800.0	23.12	133.17	6,562.0	232.9	1,589.1	21.3	8.00	4.24	19.10
6,900.0	28.92	145.81	6,651.9	199.5	1,617.1	58.8	8.00	5.80	12.64
7,000.0	35.53	154.32	6,736.5	153.2	1,643.3	108.6	8.00	6.61	8.51
7,100.0	42.56	160.39	6,814.2	95.1	1,667.3	169.8	8.00	7.03	6.07
7,200.0	49.84	165.00	6,883.3	26.2	1,688.5	241.2	8.00	7.28	4.61
7,300.0	57.27	168.70	6,942.7	-52.1	1,706.7	321.3	8.00	7.43	3.71
7,400.0	64.79	171.83	6,991.1	-138.3	1,721.4	408.7	8.00	7.52	3.13
7,500.0	72.36	174.60	7,027.6	-230.6	1,732.3	501.7	8.00	7.58	2.76
7,600.0	79.97	177.14	7,051.5	-327.4	1,739.3	598.3	8.00	7.61	2.54
7,700.0	87.60	179.56	7,062.3	-426.7	1,742.1	696.8	8.00	7.63	2.42
7,733.4	90.15	180.36	7,063.0	-460.1	1,742.2	729.8	8.00	7.63	2.39
Start 10029.1 hold at 7733.4 MD									
7,800.0	90.15	180.36	7,062.8	-526.7	1,741.7	795.5	0.00	0.00	0.00
7,900.0	90.15	180.36	7,062.6	-626.7	1,741.1	894.1	0.00	0.00	0.00
8,000.0	90.15	180.36	7,062.3	-726.7	1,740.5	992.8	0.00	0.00	0.00
8,100.0	90.15	180.36	7,062.0	-826.7	1,739.9	1,091.4	0.00	0.00	0.00
8,200.0	90.15	180.36	7,061.7	-926.7	1,739.3	1,190.1	0.00	0.00	0.00
8,300.0	90.15	180.36	7,061.5	-1,026.7	1,738.6	1,288.7	0.00	0.00	0.00
8,400.0	90.15	180.36	7,061.2	-1,126.7	1,738.0	1,387.3	0.00	0.00	0.00
8,500.0	90.15	180.36	7,060.9	-1,226.7	1,737.4	1,486.0	0.00	0.00	0.00
8,600.0	90.15	180.36	7,060.7	-1,326.7	1,736.8	1,584.6	0.00	0.00	0.00
8,700.0	90.15	180.36	7,060.4	-1,426.7	1,736.1	1,683.3	0.00	0.00	0.00
8,800.0	90.15	180.36	7,060.1	-1,526.7	1,735.5	1,781.9	0.00	0.00	0.00
8,900.0	90.15	180.36	7,059.9	-1,626.7	1,734.9	1,880.5	0.00	0.00	0.00
9,000.0	90.15	180.36	7,059.6	-1,726.7	1,734.3	1,979.2	0.00	0.00	0.00
9,100.0	90.15	180.36	7,059.3	-1,826.7	1,733.6	2,077.8	0.00	0.00	0.00
9,200.0	90.15	180.36	7,059.1	-1,926.7	1,733.0	2,176.5	0.00	0.00	0.00
9,300.0	90.15	180.36	7,058.8	-2,026.7	1,732.4	2,275.1	0.00	0.00	0.00
9,400.0	90.15	180.36	7,058.5	-2,126.7	1,731.8	2,373.7	0.00	0.00	0.00
9,500.0	90.15	180.36	7,058.2	-2,226.7	1,731.2	2,472.4	0.00	0.00	0.00
9,600.0	90.15	180.36	7,058.0	-2,326.7	1,730.5	2,571.0	0.00	0.00	0.00
9,700.0	90.15	180.36	7,057.7	-2,426.7	1,729.9	2,669.7	0.00	0.00	0.00
9,800.0	90.15	180.36	7,057.4	-2,526.7	1,729.3	2,768.3	0.00	0.00	0.00
9,900.0	90.15	180.36	7,057.2	-2,626.6	1,728.7	2,867.0	0.00	0.00	0.00
10,000.0	90.15	180.36	7,056.9	-2,726.6	1,728.0	2,965.6	0.00	0.00	0.00

Database:	US_EDM	Local Co-ordinate Reference:	Well Wilkinson J-12HN
Company:	Bayswater Exploration & Production, LLC	TVD Reference:	WELL @ 4796.0ft (RKB - 22')
Project:	SEC.1-T6N-R65W	MD Reference:	WELL @ 4796.0ft (RKB - 22')
Site:	Wilkinson 1-P Pad Sec.1-T6N-R65W	North Reference:	True
Well:	Wilkinson J-12HN	Survey Calculation Method:	Minimum Curvature
Wellbore:	Wellbore #1		
Design:	Plan #2 (10-18-16)		

Planned Survey									
Measured Depth (ft)	Inclination (°)	Azimuth (°)	Vertical Depth (ft)	+N/-S (ft)	+E/-W (ft)	Vertical Section (ft)	Dogleg Rate (°/100usft)	Build Rate (°/100usft)	Turn Rate (°/100usft)
10,100.0	90.15	180.36	7,056.6	-2,826.6	1,727.4	3,064.2	0.00	0.00	0.00
10,200.0	90.15	180.36	7,056.4	-2,926.6	1,726.8	3,162.9	0.00	0.00	0.00
10,300.0	90.15	180.36	7,056.1	-3,026.6	1,726.2	3,261.5	0.00	0.00	0.00
10,400.0	90.15	180.36	7,055.8	-3,126.6	1,725.6	3,360.2	0.00	0.00	0.00
10,500.0	90.15	180.36	7,055.6	-3,226.6	1,724.9	3,458.8	0.00	0.00	0.00
10,600.0	90.15	180.36	7,055.3	-3,326.6	1,724.3	3,557.4	0.00	0.00	0.00
10,700.0	90.15	180.36	7,055.0	-3,426.6	1,723.7	3,656.1	0.00	0.00	0.00
10,800.0	90.15	180.36	7,054.7	-3,526.6	1,723.1	3,754.7	0.00	0.00	0.00
10,900.0	90.15	180.36	7,054.5	-3,626.6	1,722.4	3,853.4	0.00	0.00	0.00
11,000.0	90.15	180.36	7,054.2	-3,726.6	1,721.8	3,952.0	0.00	0.00	0.00
11,100.0	90.15	180.36	7,053.9	-3,826.6	1,721.2	4,050.6	0.00	0.00	0.00
11,200.0	90.15	180.36	7,053.7	-3,926.6	1,720.6	4,149.3	0.00	0.00	0.00
11,300.0	90.15	180.36	7,053.4	-4,026.6	1,720.0	4,247.9	0.00	0.00	0.00
11,400.0	90.15	180.36	7,053.1	-4,126.6	1,719.3	4,346.6	0.00	0.00	0.00
11,500.0	90.15	180.36	7,052.9	-4,226.6	1,718.7	4,445.2	0.00	0.00	0.00
11,600.0	90.15	180.36	7,052.6	-4,326.6	1,718.1	4,543.9	0.00	0.00	0.00
11,700.0	90.15	180.36	7,052.3	-4,426.6	1,717.5	4,642.5	0.00	0.00	0.00
11,800.0	90.15	180.36	7,052.1	-4,526.6	1,716.8	4,741.1	0.00	0.00	0.00
11,900.0	90.15	180.36	7,051.8	-4,626.6	1,716.2	4,839.8	0.00	0.00	0.00
12,000.0	90.15	180.36	7,051.5	-4,726.6	1,715.6	4,938.4	0.00	0.00	0.00
12,100.0	90.15	180.36	7,051.2	-4,826.6	1,715.0	5,037.1	0.00	0.00	0.00
12,200.0	90.15	180.36	7,051.0	-4,926.6	1,714.3	5,135.7	0.00	0.00	0.00
12,300.0	90.15	180.36	7,050.7	-5,026.6	1,713.7	5,234.3	0.00	0.00	0.00
12,400.0	90.15	180.36	7,050.4	-5,126.6	1,713.1	5,333.0	0.00	0.00	0.00
12,500.0	90.15	180.36	7,050.2	-5,226.6	1,712.5	5,431.6	0.00	0.00	0.00
12,600.0	90.15	180.36	7,049.9	-5,326.6	1,711.9	5,530.3	0.00	0.00	0.00
12,700.0	90.15	180.36	7,049.6	-5,426.6	1,711.2	5,628.9	0.00	0.00	0.00
12,800.0	90.15	180.36	7,049.4	-5,526.6	1,710.6	5,727.5	0.00	0.00	0.00
12,900.0	90.15	180.36	7,049.1	-5,626.6	1,710.0	5,826.2	0.00	0.00	0.00
13,000.0	90.15	180.36	7,048.8	-5,726.6	1,709.4	5,924.8	0.00	0.00	0.00
13,100.0	90.15	180.36	7,048.6	-5,826.6	1,708.7	6,023.5	0.00	0.00	0.00
13,200.0	90.15	180.36	7,048.3	-5,926.6	1,708.1	6,122.1	0.00	0.00	0.00
13,300.0	90.15	180.36	7,048.0	-6,026.6	1,707.5	6,220.8	0.00	0.00	0.00
13,400.0	90.15	180.36	7,047.7	-6,126.6	1,706.9	6,319.4	0.00	0.00	0.00
13,500.0	90.15	180.36	7,047.5	-6,226.6	1,706.3	6,418.0	0.00	0.00	0.00
13,600.0	90.15	180.36	7,047.2	-6,326.6	1,705.6	6,516.7	0.00	0.00	0.00
13,700.0	90.15	180.36	7,046.9	-6,426.6	1,705.0	6,615.3	0.00	0.00	0.00
13,800.0	90.15	180.36	7,046.7	-6,526.6	1,704.4	6,714.0	0.00	0.00	0.00
13,900.0	90.15	180.36	7,046.4	-6,626.6	1,703.8	6,812.6	0.00	0.00	0.00
14,000.0	90.15	180.36	7,046.1	-6,726.6	1,703.1	6,911.2	0.00	0.00	0.00
14,100.0	90.15	180.36	7,045.9	-6,826.6	1,702.5	7,009.9	0.00	0.00	0.00
14,200.0	90.15	180.36	7,045.6	-6,926.6	1,701.9	7,108.5	0.00	0.00	0.00
14,300.0	90.15	180.36	7,045.3	-7,026.5	1,701.3	7,207.2	0.00	0.00	0.00
14,400.0	90.15	180.36	7,045.1	-7,126.5	1,700.7	7,305.8	0.00	0.00	0.00
14,500.0	90.15	180.36	7,044.8	-7,226.5	1,700.0	7,404.4	0.00	0.00	0.00
14,600.0	90.15	180.36	7,044.5	-7,326.5	1,699.4	7,503.1	0.00	0.00	0.00
14,700.0	90.15	180.36	7,044.2	-7,426.5	1,698.8	7,601.7	0.00	0.00	0.00
14,800.0	90.15	180.36	7,044.0	-7,526.5	1,698.2	7,700.4	0.00	0.00	0.00
14,900.0	90.15	180.36	7,043.7	-7,626.5	1,697.5	7,799.0	0.00	0.00	0.00
15,000.0	90.15	180.36	7,043.4	-7,726.5	1,696.9	7,897.7	0.00	0.00	0.00
15,100.0	90.15	180.36	7,043.2	-7,826.5	1,696.3	7,996.3	0.00	0.00	0.00
15,200.0	90.15	180.36	7,042.9	-7,926.5	1,695.7	8,094.9	0.00	0.00	0.00
15,300.0	90.15	180.36	7,042.6	-8,026.5	1,695.0	8,193.6	0.00	0.00	0.00
15,400.0	90.15	180.36	7,042.4	-8,126.5	1,694.4	8,292.2	0.00	0.00	0.00

Database:	US_EDM	Local Co-ordinate Reference:	Well Wilkinson J-12HN
Company:	Bayswater Exploration & Production, LLC	TVD Reference:	WELL @ 4796.0ft (RKB - 22')
Project:	SEC.1-T6N-R65W	MD Reference:	WELL @ 4796.0ft (RKB - 22')
Site:	Wilkinson 1-P Pad Sec.1-T6N-R65W	North Reference:	True
Well:	Wilkinson J-12HN	Survey Calculation Method:	Minimum Curvature
Wellbore:	Wellbore #1		
Design:	Plan #2 (10-18-16)		

Planned Survey										
Measured Depth (ft)	Inclination (°)	Azimuth (°)	Vertical Depth (ft)	+N/-S (ft)	+E/-W (ft)	Vertical Section (ft)	Dogleg Rate (°/100usft)	Build Rate (°/100usft)	Turn Rate (°/100usft)	
15,500.0	90.15	180.36	7,042.1	-8,226.5	1,693.8	8,390.9	0.00	0.00	0.00	
15,600.0	90.15	180.36	7,041.8	-8,326.5	1,693.2	8,489.5	0.00	0.00	0.00	
15,700.0	90.15	180.36	7,041.6	-8,426.5	1,692.6	8,588.1	0.00	0.00	0.00	
15,800.0	90.15	180.36	7,041.3	-8,526.5	1,691.9	8,686.8	0.00	0.00	0.00	
15,900.0	90.15	180.36	7,041.0	-8,626.5	1,691.3	8,785.4	0.00	0.00	0.00	
16,000.0	90.15	180.36	7,040.7	-8,726.5	1,690.7	8,884.1	0.00	0.00	0.00	
16,100.0	90.15	180.36	7,040.5	-8,826.5	1,690.1	8,982.7	0.00	0.00	0.00	
16,200.0	90.15	180.36	7,040.2	-8,926.5	1,689.4	9,081.3	0.00	0.00	0.00	
16,300.0	90.15	180.36	7,039.9	-9,026.5	1,688.8	9,180.0	0.00	0.00	0.00	
16,400.0	90.15	180.36	7,039.7	-9,126.5	1,688.2	9,278.6	0.00	0.00	0.00	
16,500.0	90.15	180.36	7,039.4	-9,226.5	1,687.6	9,377.3	0.00	0.00	0.00	
16,600.0	90.15	180.36	7,039.1	-9,326.5	1,687.0	9,475.9	0.00	0.00	0.00	
16,700.0	90.15	180.36	7,038.9	-9,426.5	1,686.3	9,574.6	0.00	0.00	0.00	
16,800.0	90.15	180.36	7,038.6	-9,526.5	1,685.7	9,673.2	0.00	0.00	0.00	
16,900.0	90.15	180.36	7,038.3	-9,626.5	1,685.1	9,771.8	0.00	0.00	0.00	
17,000.0	90.15	180.36	7,038.1	-9,726.5	1,684.5	9,870.5	0.00	0.00	0.00	
17,100.0	90.15	180.36	7,037.8	-9,826.5	1,683.8	9,969.1	0.00	0.00	0.00	
17,200.0	90.15	180.36	7,037.5	-9,926.5	1,683.2	10,067.8	0.00	0.00	0.00	
17,300.0	90.15	180.36	7,037.2	-10,026.5	1,682.6	10,166.4	0.00	0.00	0.00	
17,400.0	90.15	180.36	7,037.0	-10,126.5	1,682.0	10,265.0	0.00	0.00	0.00	
17,500.0	90.15	180.36	7,036.7	-10,226.5	1,681.4	10,363.7	0.00	0.00	0.00	
17,600.0	90.15	180.36	7,036.4	-10,326.5	1,680.7	10,462.3	0.00	0.00	0.00	
17,700.0	90.15	180.36	7,036.2	-10,426.5	1,680.1	10,561.0	0.00	0.00	0.00	
17,762.5	90.15	180.36	7,036.0	-10,489.0	1,679.7	10,622.6	0.00	0.00	0.00	
TD at 17762.5										

Design Targets										
Target Name - hit/miss target - Shape	Dip Angle (°)	Dip Dir. (°)	TVD (ft)	+N/-S (ft)	+E/-W (ft)	Northing (usft)	Easting (usft)	Latitude	Longitude	
SHL 316'FSL, 435'FWL, - plan hits target center - Point	0.00	0.00	1.0	0.0	0.0	1,429,422.11	3,244,938.85	40.508825	-104.619111	
BHL 470'FSL, 2180'FWL - plan hits target center - Point	0.00	0.00	7,036.0	-10,489.0	1,679.7	1,418,950.67	3,246,722.62	40.480034	-104.613073	
LPL 100'FNL, 2180'FWL - plan hits target center - Point	0.00	0.00	7,063.0	-460.1	1,742.2	1,428,979.34	3,246,685.43	40.507562	-104.612846	

Casing Points										
Measured Depth (ft)	Vertical Depth (ft)	Name				Casing Diameter (")	Hole Diameter (")			
7,733.4	7,063.0	7"				7	7-1/2			

Database:	US_EDM	Local Co-ordinate Reference:	Well Wilkinson J-12HN
Company:	Bayswater Exploration & Production, LLC	TVD Reference:	WELL @ 4796.0ft (RKB - 22')
Project:	SEC.1-T6N-R65W	MD Reference:	WELL @ 4796.0ft (RKB - 22')
Site:	Wilkinson 1-P Pad Sec.1-T6N-R65W	North Reference:	True
Well:	Wilkinson J-12HN	Survey Calculation Method:	Minimum Curvature
Wellbore:	Wellbore #1		
Design:	Plan #2 (10-18-16)		

Plan Annotations				
Measured Depth (ft)	Vertical Depth (ft)	Local Coordinates		Comment
		+N/-S (ft)	+E/-W (ft)	
600.0	600.0	0.0	0.0	KOP - Start Build 1.00
2,362.7	2,335.0	45.0	265.2	Start 4206.2 hold at 2362.7 MD
6,568.9	6,343.7	258.3	1,520.9	Start DLS 8.00 TFO 99.49
7,733.4	7,063.0	-460.1	1,742.2	Start 10029.1 hold at 7733.4 MD
17,762.5	7,036.0	-10,489.0	1,679.7	TD at 17762.5