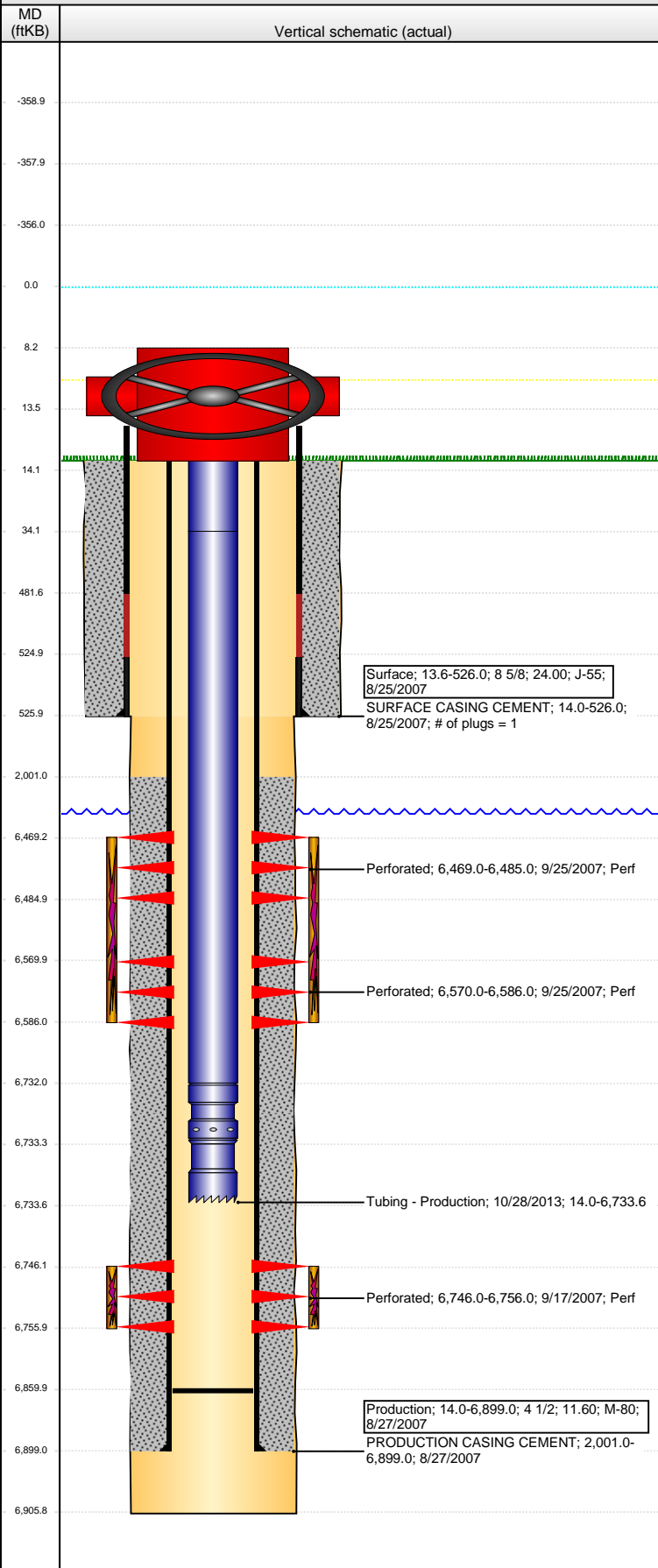


Wellbore Schematic Input Report

Well Name: BASHOR STATE AA16-25

VERTICAL - ORIGINAL HOLE, 11/17/2016 11:44:06 AM



Well Header			
API	Business Unit	District	Well Config
05-123-26117	DJ BASIN	15	VERTICAL
Original KB Elevation (ft)	KB - GL / MSL (ftKB)	Spud Date	P & A Date
4,693	14.00	8/24/2007	
Comment			
Directions To Well			
WCR 68 & 67, WEST 7/10, NORTH 2/10 INTO			
Congressional Location			
Quarter 3	Quarter 4	Section	Township
NE	SW	16	6
Twtnshp N/S Dir		Range	Range E/W Dir
N		63	W
Bottom Hole Location			
North-South Distance (ft)		From N or S Line	East-West Distance (ft)
			From E or W Line
Plug Back Total Depths			
Date	Depth (ftKB)	Method	Com
8/27/2007	6,874.3	CASING TALLY	
2/22/2008	6,857.0	TAG	
3/12/2013	6,860.0	TAG	
Wellbore Sections			
Section Des	Size (in)	Act Top, MD (ftKB)	Act Btm, MD (ftKB)
SURFACE	12 1/4	14	526
PRODUCTION	7 7/8	526	6,906
Zone Statuses			
Zone Name	Status Date	Status	Fluid Type
CODELL	10/25/2007	PR	
NIOBRARA	10/25/2007	PR	
Casing Strings			
Surface, 526.0ftKB			
Casing Description	Run Date	OD (in)	Wt/Len (l...)
Surface	8/25/2007	8 5/8	24.00
Grade	Top, MD (ft...)	MD (ftKB)	
J-55	13.6	526.0	
Production, 6,899.0ftKB			
Casing Description	Run Date	OD (in)	Wt/Len (l...)
Production	8/27/2007	4 1/2	11.60
Grade	Top, MD (ft...)	MD (ftKB)	
M-80	14.0	6,899.0	
Cement			
Description	Top Depth (ftKB)	Bottom Depth (ftKB)	
SURFACE CASING CEMENT	14.0	526.0	
Description	Top Depth (ftKB)	Bottom Depth (ftKB)	
PRODUCTION CASING CEMENT	2,001.0	6,899.0	
Tubing Strings			
Tubing Description	Run Date	String...	ID (in)
Tubing - Production	2/22/2008	2 3/8	1.995
Wt (lb/ft)	Grade	Len (ft)	Set De...
4.60	J-55	6,724.20	
Tubing Description	Run Date	String...	ID (in)
Tubing - Production	3/13/2013	2 3/8	1.995
Wt (lb/ft)	Grade	Len (ft)	Set De...
4.70	J-55	5,767.20	5,781.1
Tubing Description	Run Date	String...	ID (in)
Tubing - Production	10/28/2013	2 3/8	1.995
Wt (lb/ft)	Grade	Len (ft)	Set De...
4.70	J-55	6,719.57	
Tubing Components			
Item Des	OD (in)	Wt (lb/ft)	Grade
Pup Joint	2 3/8	4.70	J-55
Jts	Len (ft)	Btm (ftKB)	Btm (TVD) (ftKB)
2	20.00	34.0	
Tubing	2 3/8	4.70	J-55
216	6,697.97	6,732.0	
Pump Seating Nipple	2 3/8	1.10	
1	1.20	6,733.2	
Notched collar	2 3/8		
1	0.40	6,733.6	
Perforation Data			
Zone	Bnch/St g	Entered Shot Total	Top (ftKB)
NIOBRARA, ORIGINAL HOLE		68	6,469.00
NIOBRARA, ORIGINAL HOLE		64	6,570.00
CODELL, ORIGINAL HOLE		40	6,746.00
Btm (ftKB)	Date		
6,485.00	9/25/2007		
6,586.00	9/25/2007		
6,756.00	9/17/2007		

Well Name: BASHOR STATE AA16-25

VERTICAL - ORIGINAL HOLE, 11/17/2016 11:44:08 AM

Stimulations & Treatments

Date	Zone	Primary Job Type
9/25/2007	CODELL, ORIGINAL HOLE	DRILLING/COMPLETION - ORIGINAL

Technical Result	Tech Result Details	Tech Result Note

Comment

Date	Zone	Primary Job Type
9/25/2007	NIOBRARA, ORIGINAL HOLE	DRILLING/COMPLETION - ORIGINAL

Technical Result	Tech Result Details	Tech Result Note

Comment

Other In Hole

Run Date	Des	OD (in)	Top (ftKB)	Btm (ftKB)

Logs

Date	Type	Top, MD (ftKB)	Btm, MD (ftKB)
8/27/2007	Compensated Density	2,700.0	6,875.0
8/27/2007	Induction	526.0	6,895.0
9/14/2007	CBL/CCL/GR	1,900.0	6,850.0
10/18/2012	GYRO	14.0	6,700.0

