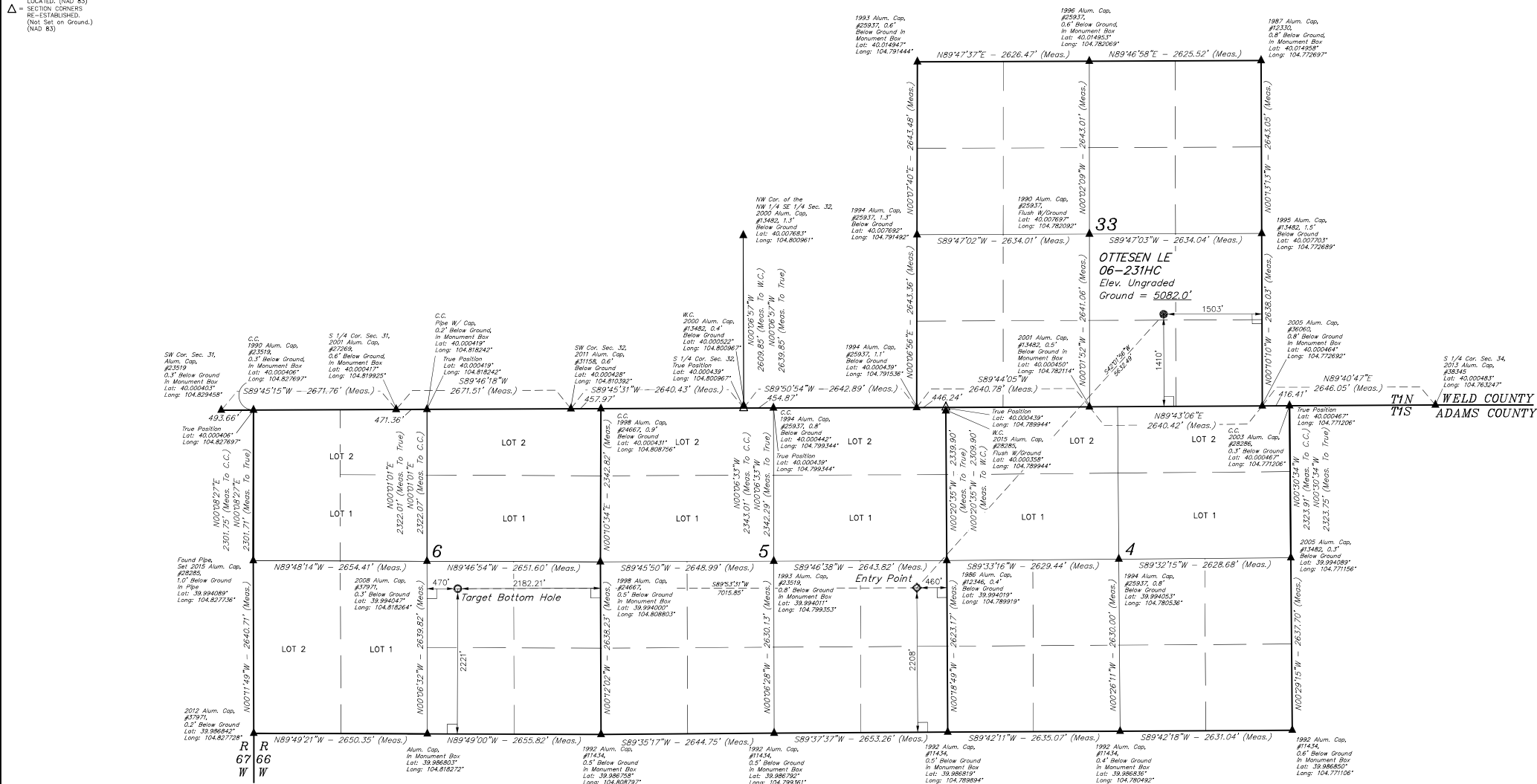


# LEGEND:

- 90° SYMBOL
- PROPOSED WELLHEAD
- TARGET BOTTOM HOLE
- ENTRY POINT
- SECTION CORNERS LOCATED (NAD 83)
- SECTION CORNERS RE-ESTABLISHED (Not Set on Ground.) (NAD 83)

T1N, R66W, 6th P.M.



PDOP = 1.4

NAD 83 (SURFACE LOCATION)	NAD 83 (ENTRY POINT)	NAD 83 (TARGET BOTTOM HOLE)
LATITUDE = 40°06'15.57" (40.004335)	LATITUDE = 39°59'34.35" (39.992875)	LATITUDE = 39°59'34.40" (39.992889)
LONGITUDE = 104°46'41.00" (104.778056)	LONGITUDE = 104°47'29.60" (104.791556)	LONGITUDE = 104°48'59.72" (104.816589)
NAD 83 (SURFACE LOCATION)	NAD 83 (ENTRY POINT)	NAD 83 (TARGET BOTTOM HOLE)
LATITUDE = 40°06'15.63" (40.004342)	LATITUDE = 39°59'34.41" (39.992882)	LATITUDE = 39°59'34.46" (39.992896)
LONGITUDE = 104°46'39.10" (104.777528)	LONGITUDE = 104°47'27.70" (104.791028)	LONGITUDE = 104°48'57.83" (104.816661)

**BASIS OF BEARINGS**  
BASIS OF BEARINGS IS A G.P.S. OBSERVATION  
**BASIS OF ELEVATION**  
USGS COOPERATIVE BASE NETWORK CONTROL STATION,  
DESIGNATION "JR 53 5026", NGS DATA SHEET LISTS THE NAVD 88  
ELEVATION AS BEING 5028 FEET.

**UWEL, LLC**  
Corporate Office \* 85 South 200 East  
Vernal, UT 84078 \* (435) 789-1017

CERTIFICATE OF RECORDING  
THIS IS TO CERTIFY THAT THE ABOVE DESCRIBED SURVEY WAS MADE IN ACCORDANCE WITH THE  
NOTES OF ACTUAL SURVEYS MADE AND TO THE BEST OF MY KNOWLEDGE AND BELIEF.  
RECORDED LAND SURVEYOR  
STATE OF COLORADO  
10/16/2016

REV: 2 09-12-16 M.F.D. (NAME, EP & TBH CHANGE)

**GREAT WESTERN OPERATING COMPANY**  
OTTESEN LE 06-231HC  
NW 1/4 SE 1/4, SECTION 33, T1N, R66W, 6th P.M.  
WELD COUNTY, COLORADO

SURVEYED BY: DALLAS NIELSEN, C.M. DATE: 06-30-16  
DRAWN BY: K.B. DATE DRAWN: 11-11-15  
SCALE: 1" = 1000'  
**WELL LOCATION PLAT**