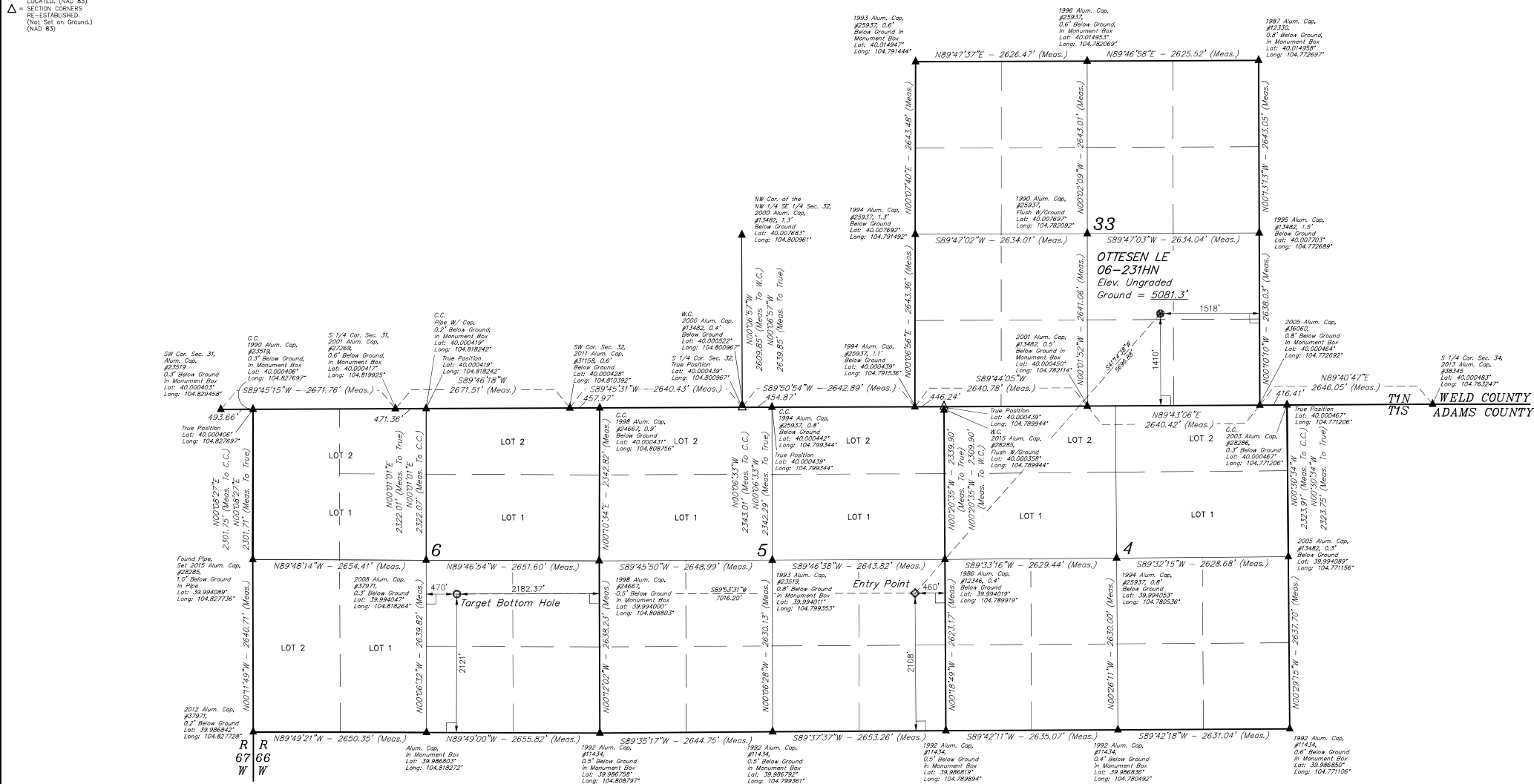


# LEGEND:

- 90° SYMBOL
- PROPOSED WELLHEAD
- TARGET BOTTOM HOLE
- ENTRY POINT
- SECTION CORNERS LOCATED (NAD 83)
- SECTION CORNERS RE-ESTABLISHED (Not Set on Ground, NAD 83)

T1N, R66W, 6th P.M.



PDOP = 1.4

NAD 83 (SURFACE LOCATION)	NAD 83 (ENTRY POINT)	NAD 83 (TARGET BOTTOM HOLE)
LATITUDE = 40°06'15.57" (40.004335)	LATITUDE = 39°59'33.36" (39.992600)	LATITUDE = 39°59'33.42" (39.992617)
LONGITUDE = 104°46'41.19" (104.778108)	LONGITUDE = 104°47'29.60" (104.791556)	LONGITUDE = 104°48'59.72" (104.816589)
NAD 27 (SURFACE LOCATION)	NAD 27 (ENTRY POINT)	NAD 27 (TARGET BOTTOM HOLE)
LATITUDE = 40°06'15.63" (40.004342)	LATITUDE = 39°59'33.42" (39.992617)	LATITUDE = 39°59'33.47" (39.992631)
LONGITUDE = 104°46'39.29" (104.777581)	LONGITUDE = 104°47'27.70" (104.791028)	LONGITUDE = 104°48'57.83" (104.816661)

**BASIS OF BEARINGS**  
BASIS OF BEARINGS IS A G.P.S. OBSERVATION  
**BASIS OF ELEVATION**  
USGS COOPERATIVE BASE NETWORK CONTROL STATION,  
DESIGNATION "JR 53 5026". NGS DATA SHEET LISTS THE NAVD 88  
ELEVATION AS BEING 5028 FEET.



UEL, LLC  
Corporate Office \* 85 South 200 East  
Vernal, UT 84078 \* (435) 789-1017



CERTIFICATE OF RECORDING  
THIS IS TO CERTIFY THAT THE ABOVE DESCRIBED SURVEY WAS MADE IN ACCORDANCE WITH THE  
NOTES OF ACTUAL SURVEYS MADE AND TO THE BEST OF MY KNOWLEDGE AND BELIEF.  
RECORDED LAND SURVEYOR  
STATE OF COLORADO  
10/26/16

REV: 2 09-12-16 M.F.D. (NAME, EP & TBH CHANGE)

**GREAT WESTERN OPERATING COMPANY**  
OTTESEN LE 06-231HN  
NW 1/4 SE 1/4, SECTION 33, T1N, R66W, 6th P.M.  
WELD COUNTY, COLORADO

SURVEYED BY: DALLAS NIELSEN, C.M.	DATE: 06-30-16
DRAWN BY: K.B.	DATE DRAWN: 11-11-15
SCALE: 1" = 1000'	
WELL LOCATION PLAT	