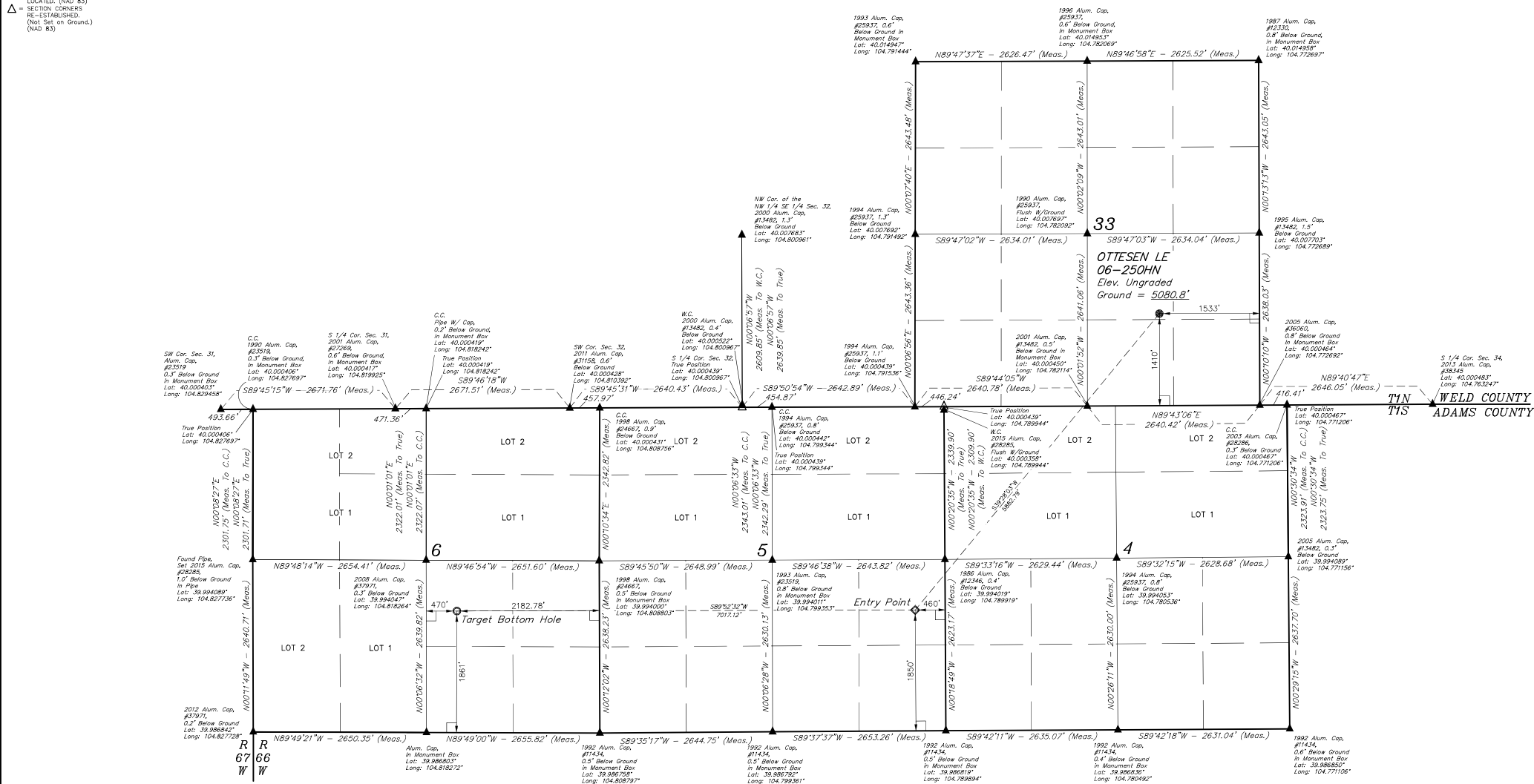


LEGEND:

- 90° SYMBOL
- PROPOSED WELLHEAD
- TARGET BOTTOM HOLE
- ENTRY POINT
- SECTION CORNERS LOCATED (NAD 83)
- SECTION CORNERS RE-ESTABLISHED (Not Set on Ground.) (NAD 83)

T1N, R66W, 6th P.M.



PDOP = 1.5

NAD 83 (SURFACE LOCATION)	NAD 83 (ENTRY POINT)	NAD 83 (TARGET BOTTOM HOLE)
LATITUDE = 40°06'15.57" (40.004335)	LATITUDE = 39°59'30.81" (39.991802)	LATITUDE = 39°59'30.85" (39.991903)
LONGITUDE = 104°46'41.38" (104.778161)	LONGITUDE = 104°47'29.59" (104.791553)	LONGITUDE = 104°48'39.72" (104.816589)
NAD 83 (SURFACE LOCATION)	NAD 83 (ENTRY POINT)	NAD 83 (TARGET BOTTOM HOLE)
LATITUDE = 40°06'15.63" (40.004342)	LATITUDE = 39°59'30.87" (39.991908)	LATITUDE = 39°59'30.91" (39.991919)
LONGITUDE = 104°46'39.49" (104.777636)	LONGITUDE = 104°47'27.69" (104.791025)	LONGITUDE = 104°48'37.83" (104.816661)

BASIS OF BEARINGS
BASIS OF BEARINGS IS A G.P.S. OBSERVATION
BASIS OF ELEVATION
USGS COOPERATIVE BASE NETWORK CONTROL STATION,
DESIGNATION "JR 53 5026". NGS DATA SHEET LISTS THE NAVD 88
ELEVATION AS BEING 5028 FEET.



UEL, LLC
Corporate Office * 85 South 200 East
Vernal, UT 84078 * (435) 789-1017



CERTIFICATE OF RECORDING
THIS IS TO CERTIFY THAT THE ABOVE DESCRIBED SURVEY WAS MADE IN ACCORDANCE WITH THE
NOTES OF ACTUAL SURVEYS MADE AND TO THE BEST OF MY KNOWLEDGE AND BELIEF.
RECORDED LAND SURVEYOR
STATE OF COLORADO
10/16/2016

REV: 2 09-12-16 M.F.D. (NAME, EP & TBH CHANGE)

GREAT WESTERN OPERATING COMPANY
OTTESSEN LE 06-250HN
NW 1/4 SE 1/4, SECTION 33, T1N, R66W, 6th P.M.
WELD COUNTY, COLORADO

SURVEYED BY: DALLAS NIELSEN, C.M.	DATE: 06-30-16
DRAWN BY: K.B.	DATE DRAWN: 11-11-15
SCALE: 1" = 1000'	
WELL LOCATION PLAT	