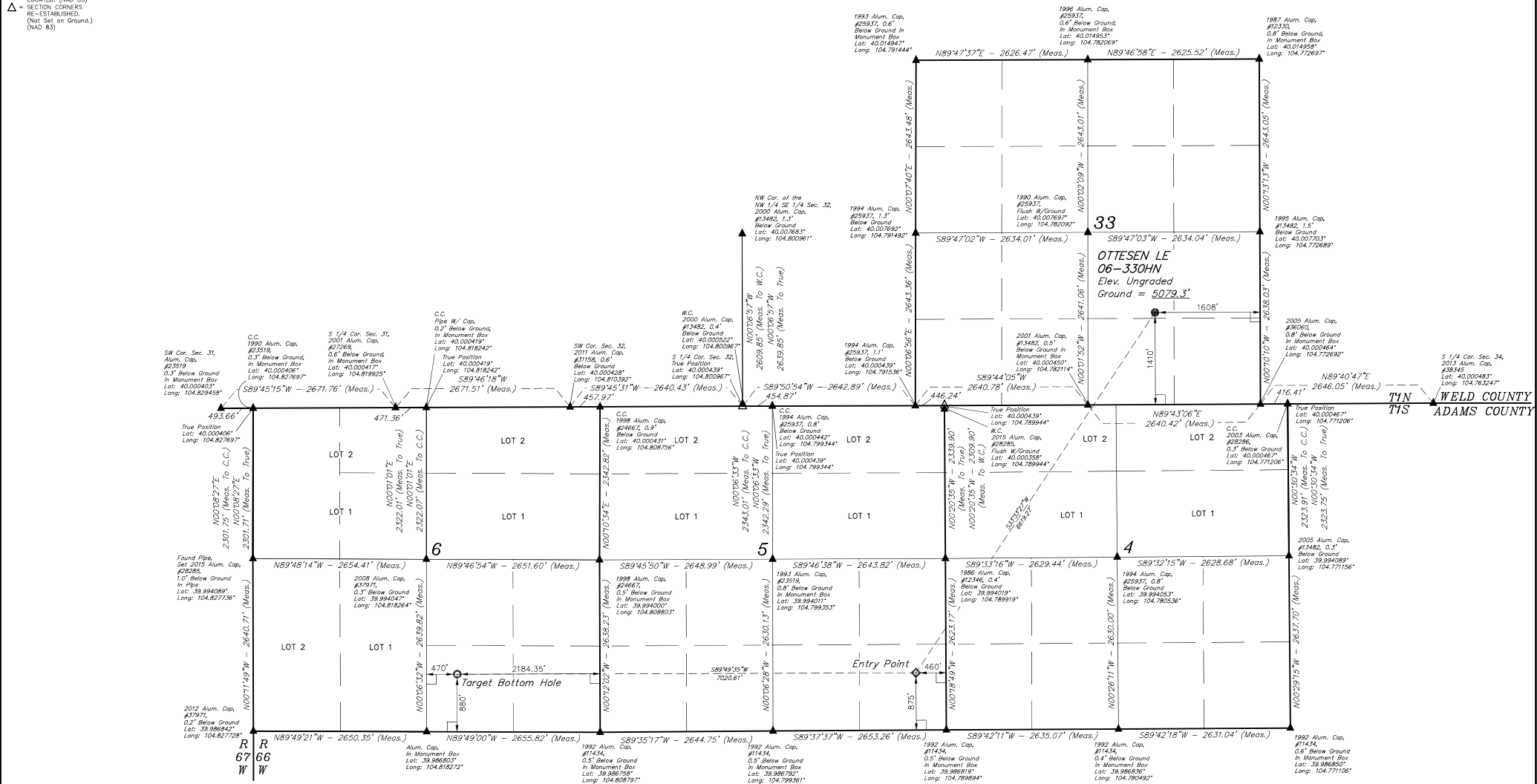


LEGEND:

- 90° SYMBOL
- PROPOSED WELLHEAD
- TARGET BOTTOM HOLE
- ENTRY POINT
- SECTION CORNERS LOCATED (NAD 83)
- SECTION CORNERS RE-ESTABLISHED (Not Set on Ground.) (NAD 83)

T1N, R66W, 6th P.M.



PDOP = 1.5		
NAD 83 (SURFACE LOCATION)	NAD 83 (ENTRY POINT)	NAD 83 (TARGET BOTTOM HOLE)
LATITUDE = 40°06'15.57" (40.004335)	LATITUDE = 39°59'21.18" (39.989217)	LATITUDE = 39°59'21.15" (39.989208)
LONGITUDE = 104°46'42.35" (104.778431)	LONGITUDE = 104°47'29.56" (104.791544)	LONGITUDE = 104°48'39.73" (104.816592)
NAD 27 (SURFACE LOCATION)	NAD 27 (ENTRY POINT)	NAD 27 (TARGET BOTTOM HOLE)
LATITUDE = 40°06'15.63" (40.004342)	LATITUDE = 39°59'21.24" (39.989233)	LATITUDE = 39°59'21.21" (39.989225)
LONGITUDE = 104°46'40.45" (104.777903)	LONGITUDE = 104°47'27.66" (104.791017)	LONGITUDE = 104°48'37.83" (104.816644)

BASIS OF BEARINGS
BASIS OF BEARINGS IS A G.P.S. OBSERVATION
BASIS OF ELEVATION
USGS COOPERATIVE BASE NETWORK CONTROL STATION,
DESIGNATION "JR 53 5026". NGS DATA SHEET LISTS THE NAVD 88
ELEVATION AS BEING 5028 FEET.

CERTIFICATE OF RECORD
THIS IS TO CERTIFY THAT THE ABOVE IS A TRUE AND CORRECT COPY OF THE ORIGINAL SURVEY RECORD AND THAT THE SAME ARE TRUE AND CORRECT TO THE BEST OF MY KNOWLEDGE AND BELIEF.
RECORDED AND RETURNED TO THE SURVEYOR
STATE OF COLORADO
JAN 10 2016

REV: 2 09-12-16 M.F.D. (NAME, EP & TBH CHANGE)

GREAT WESTERN OPERATING COMPANY
OTTESEN LE 06-330HN
NW 1/4 SE 1/4, SECTION 33, T1N, R66W, 6th P.M.
WELD COUNTY, COLORADO

SURVEYED BY: DALLAS NIELSEN, C.M. DATE: 06-30-16
DRAWN BY: K.B. DATE: 11-11-15
SCALE: 1" = 1000'
WELL LOCATION PLAT