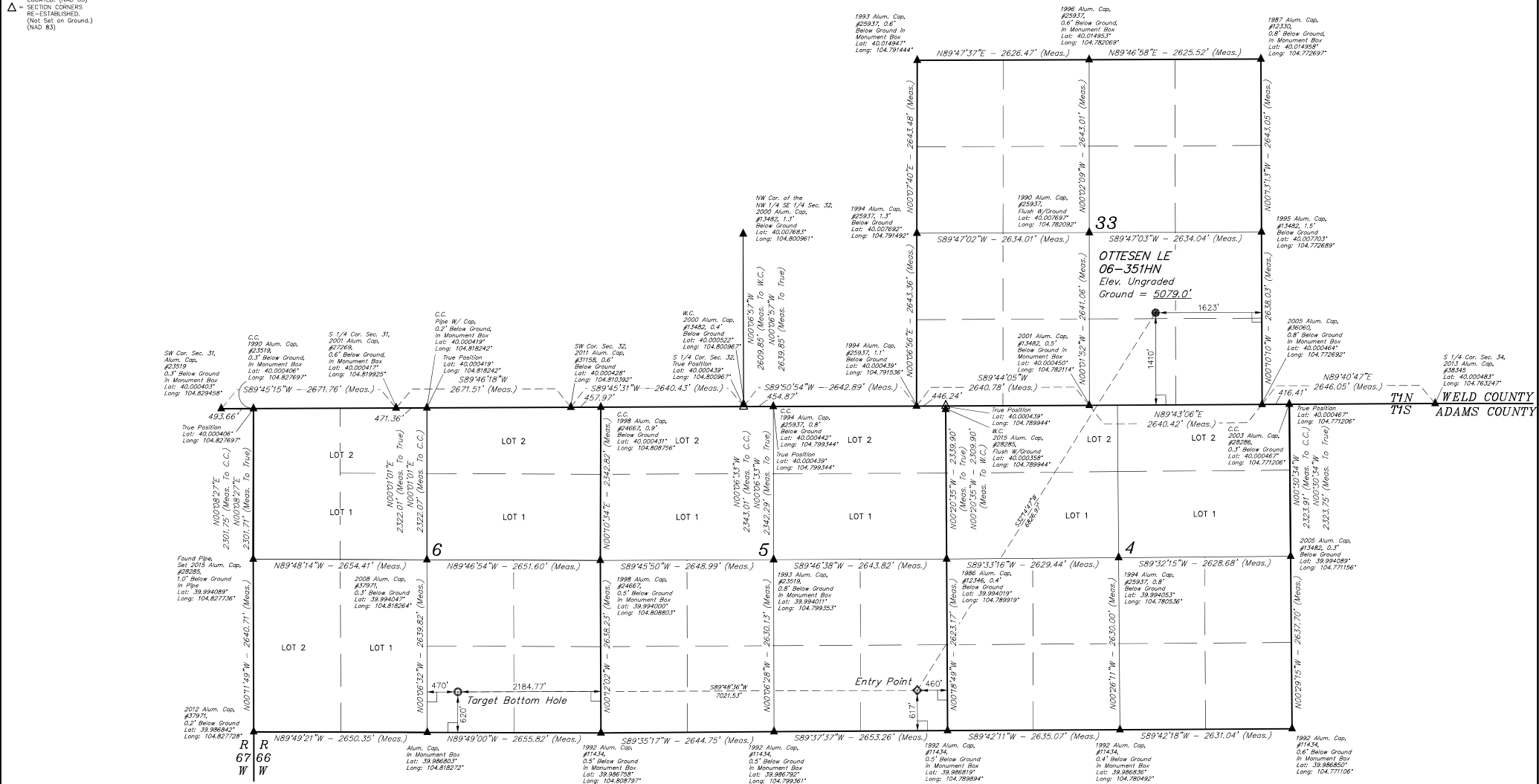


LEGEND:

- 90° SYMBOL
- PROPOSED WELLHEAD
- TARGET BOTTOM HOLE
- ENTRY POINT
- SECTION CORNERS LOCATED (NAD 83)
- SECTION CORNERS RE-ESTABLISHED (Not Set on Ground, NAD 83)

T1N, R66W, 6th P.M.



PDOP = 1.5		
NAD 83 (SURFACE LOCATION)	NAD 83 (ENTRY POINT)	NAD 83 (TARGET BOTTOM HOLE)
LATITUDE = 40°06'15.57" (40.104335)	LATITUDE = 39°59'18.65" (39.988308)	LATITUDE = 39°59'18.59" (39.988307)
LONGITUDE = 104°46'42.54" (104.778483)	LONGITUDE = 104°47'29.55" (104.791542)	LONGITUDE = 104°48'39.73" (104.816592)
NAD 83 (SURFACE LOCATION)	NAD 83 (ENTRY POINT)	NAD 83 (TARGET BOTTOM HOLE)
LATITUDE = 40°06'15.63" (40.104342)	LATITUDE = 39°59'18.69" (39.988325)	LATITUDE = 39°59'18.64" (39.988311)
LONGITUDE = 104°46'40.64" (104.777956)	LONGITUDE = 104°47'27.65" (104.791014)	LONGITUDE = 104°48'37.83" (104.816644)

BASIS OF BEARINGS
BASIS OF BEARINGS IS A G.P.S. OBSERVATION
BASIS OF ELEVATION
USGS COOPERATIVE BASE NETWORK CONTROL STATION,
DESIGNATION "JR 53 5026", NGS DATA SHEET LISTS THE NAVD 88
ELEVATION AS BEING 5028 FEET.



REV: 2 09-12-16 M.F.D. (NAME, EP & TBH CHANGE)

GREAT WESTERN OPERATING COMPANY
OTTESEN LE 06-351HN
NW 1/4 SE 1/4, SECTION 33, T1N, R66W, 6th P.M.
WELD COUNTY, COLORADO

SURVEYED BY: DALLAS NIELSEN, C.M.	DATE: 06-30-16
DRAWN BY: K.B.	DATE DRAWN: 11-11-15
SCALE: 1" = 1000'	
WELL LOCATION PLAT	