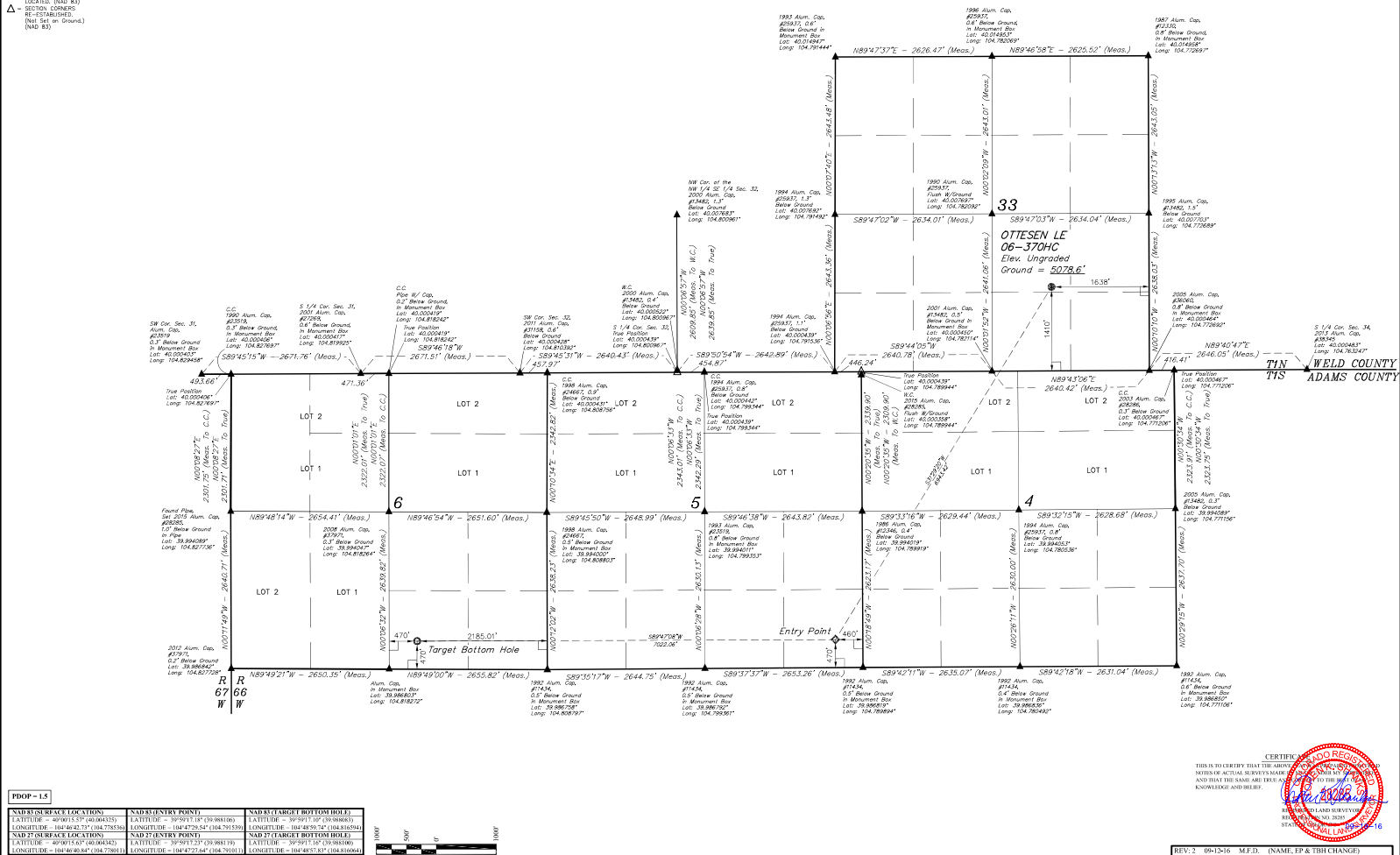


LEGEND:

- 90° SYMBOL
- PROPOSED WELLHEAD
- TARGET BOTTOM HOLE
- ◆ ENTRY POINT
- △ SECTION CORNERS (SECTION 33, 34, 35)
- △ SECTION CORNERS (SECTION 33, 34, 35)
- △ RE-ESTABLISHED (NOT SET IN GROUND)
- △ (NAD 83)

T1N, R66W, 6th P.M.



| PROD - 15 | | |
|-----------------------------------|-----------------------------------|-----------------------------------|
| NAD 83 RE-ESTABLISHED LOCATION | NAD 83 ENTRY POINT | NAD 83 TARGET BOTTOM HOLE |
| Latitude: 40°01'17.17" (NAD 83) | Latitude: 40°01'17.17" (NAD 83) | Latitude: 40°01'17.17" (NAD 83) |
| Longitude: 104°40'42.73" (NAD 83) | Longitude: 104°40'42.73" (NAD 83) | Longitude: 104°40'42.73" (NAD 83) |
| NAD 83 RE-ESTABLISHED LOCATION | NAD 83 ENTRY POINT | NAD 83 TARGET BOTTOM HOLE |
| Latitude: 40°01'17.17" (NAD 83) | Latitude: 40°01'17.17" (NAD 83) | Latitude: 40°01'17.17" (NAD 83) |
| Longitude: 104°40'42.73" (NAD 83) | Longitude: 104°40'42.73" (NAD 83) | Longitude: 104°40'42.73" (NAD 83) |

BASIS OF BEARINGS IS A C.P.S. OBSERVATION
 BASIS OF ELEVATION
 USGS COOPERATIVE BASE NETWORK CONTROL STATION
 DESIGNATION "R 53 502" NGS DATA SHEET LISTS THE NAVD 88
 ELEVATION AS BEING 502 FEET

UEL, LLC
 Corporate Office • 85 South 200 East
 Vernal, UT 84078 • (435) 769-1017

CERTIFICATE OF RECORDING
 THIS IS TO CERTIFY THAT THE ABOVE
 MAPS OR ACTUAL SURVEY MAPS
 AND THAT THE SAME ARE TRUE
 AND CORRECT AND BELIEVE
 (Signature)
 STATE OF COLORADO
 JAN 19 2016

REV: 2 09-12-16 M.F.D. (NAME, EP & TBI CHANGE)

GREAT WESTERN OPERATING COMPANY
 NW 1/4 SE 1/4 SECTION 33, T1N, R66W, 6th P.M.
 WELD COUNTY, COLORADO

SURVEYED BY: DALLAS NIELSEN, C.M. DATE: 06-26-16
 DRAWN BY: K.B. DATE DRAWN: 11-11-15
 SCALE: 1" = 100'
 WELL LOCATION PLAT